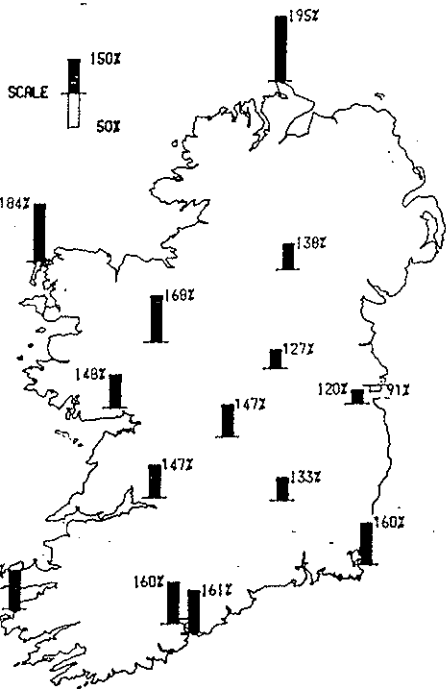


## December wet and mild but 1986 very cold overall

As in November, the atlantic influence prevailed as winds were predominantly from westerly or northwesterly direction. Again we had very high rainfall totals in most places, Dublin Airport being the only place to be below it's December average, but record totals were recorded in places. It was a very blustery month especially during the first week and although daytime temperatures were above normal they were balanced by some very cold nights. We didn't have a white Christmas this year, in fact 1986 drew to a close with a fairly mild, wet spell but for that it was one of the coldest years in history (see back page).



rainfall percentage of (1951-1980) normals

### WETTEST IN THE WEST

Percentage of average rainfall recorded ranged from 195% at Malin Head to 91% at Dublin Airport but were generally around 150% of normal. On 4th both Belmullet and Claremorris had over 40 millimetres of rain giving rise to the incredible phenomenon of a bog in Belmullet moving across an entire road. The highest daily total of the month, 44.8 millimetres was recorded some days later on Monday the 8th at Rosslere.

### NO SNOW

Rain was also widespread and heavy on 7th, 10th, 15th, 17th, 18th and 30th. As showery westerly airflows occurred between the passages of the rainbelts (fronts), hail was more frequent than usual in western and northern coastal areas. Snow flurries were seen on occasion, especially in the week 15th to 21th but didn't lie for any appreciable length of time. It was the wettest December ever recorded at both Belmullet and Malin Head, Belmullet recording 226.7 millimetres for the month.

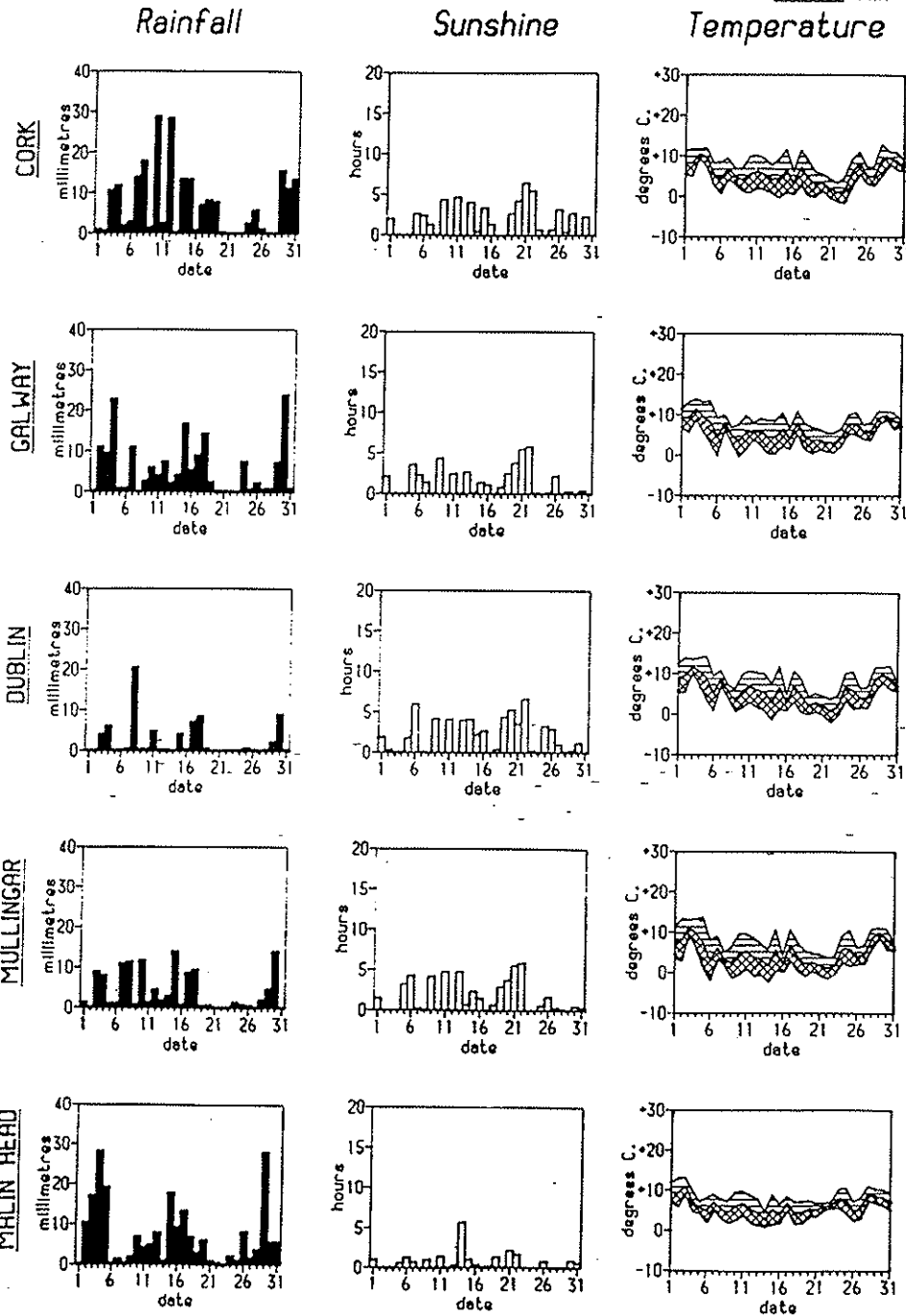
### COOL NIGHTS, MILD BY DAY

Mean minimum temperatures for the month ranged from 0.2°C above normal at Galway to 1.0°C below normal at Rosslere. With the exception of the 6th which was frosty, night time temperatures were above normal for the first week. From the 9th to the 27th however night temperatures were mostly below normal but, nonetheless the number of days with airfrost was about or below normal. The lowest

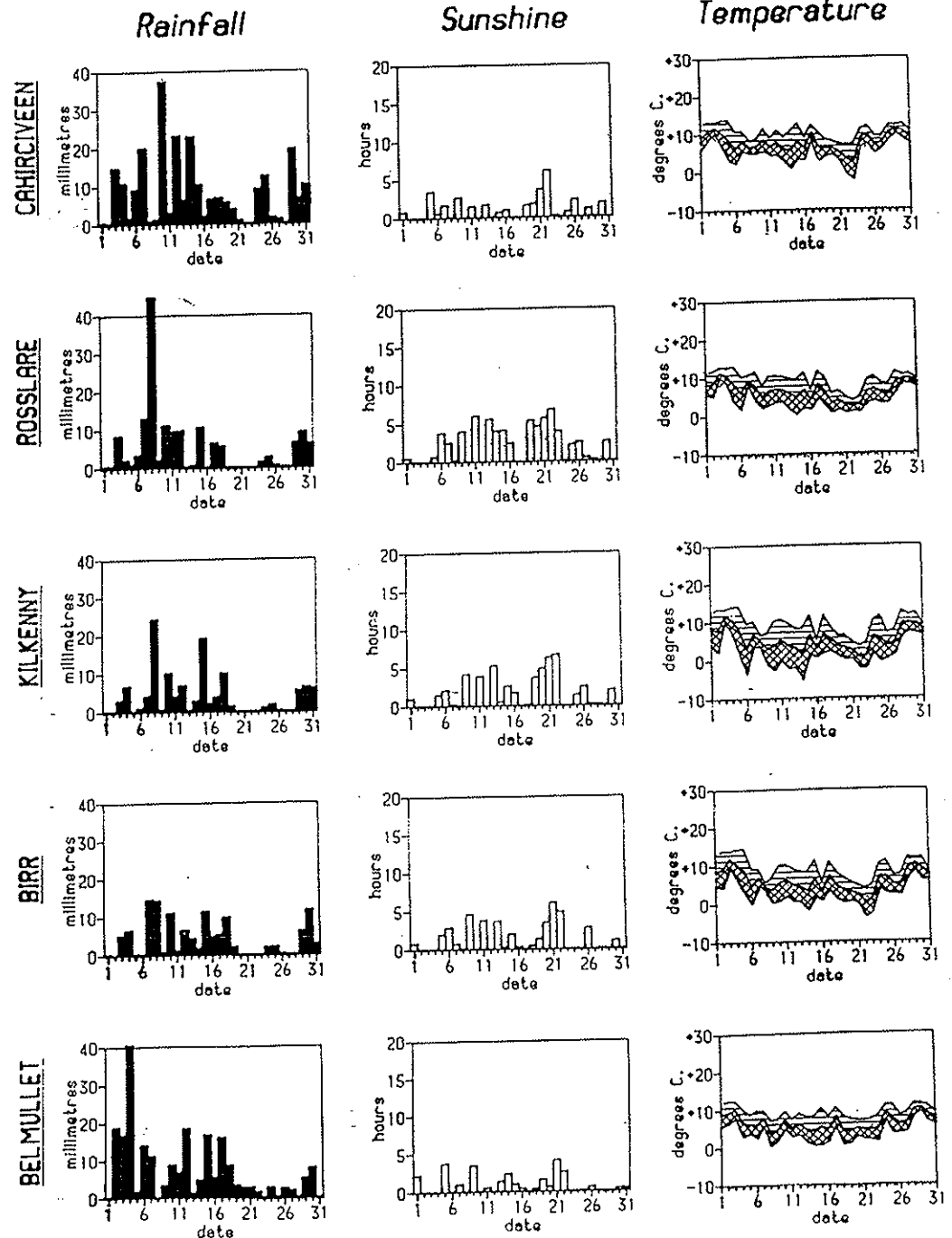
*(Continued on back page)*

# Distribution of Daily Values

Max  
Mean  
Min

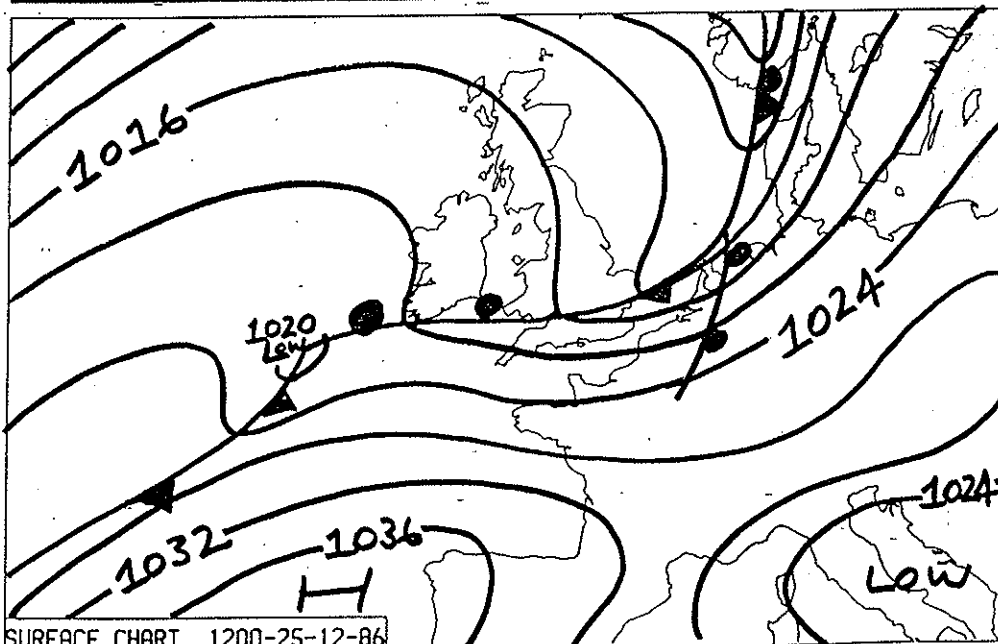
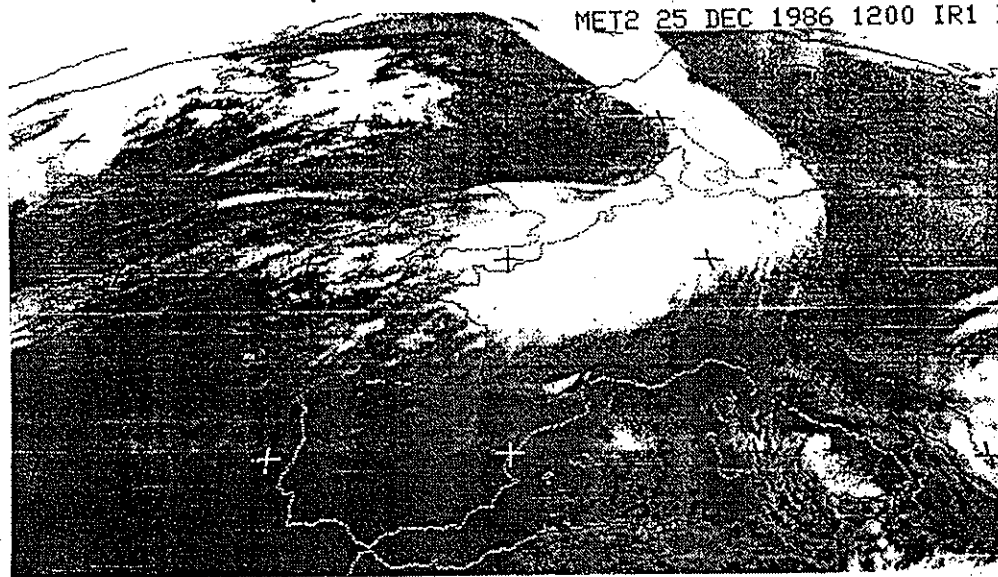


Max  
Mean  
Min



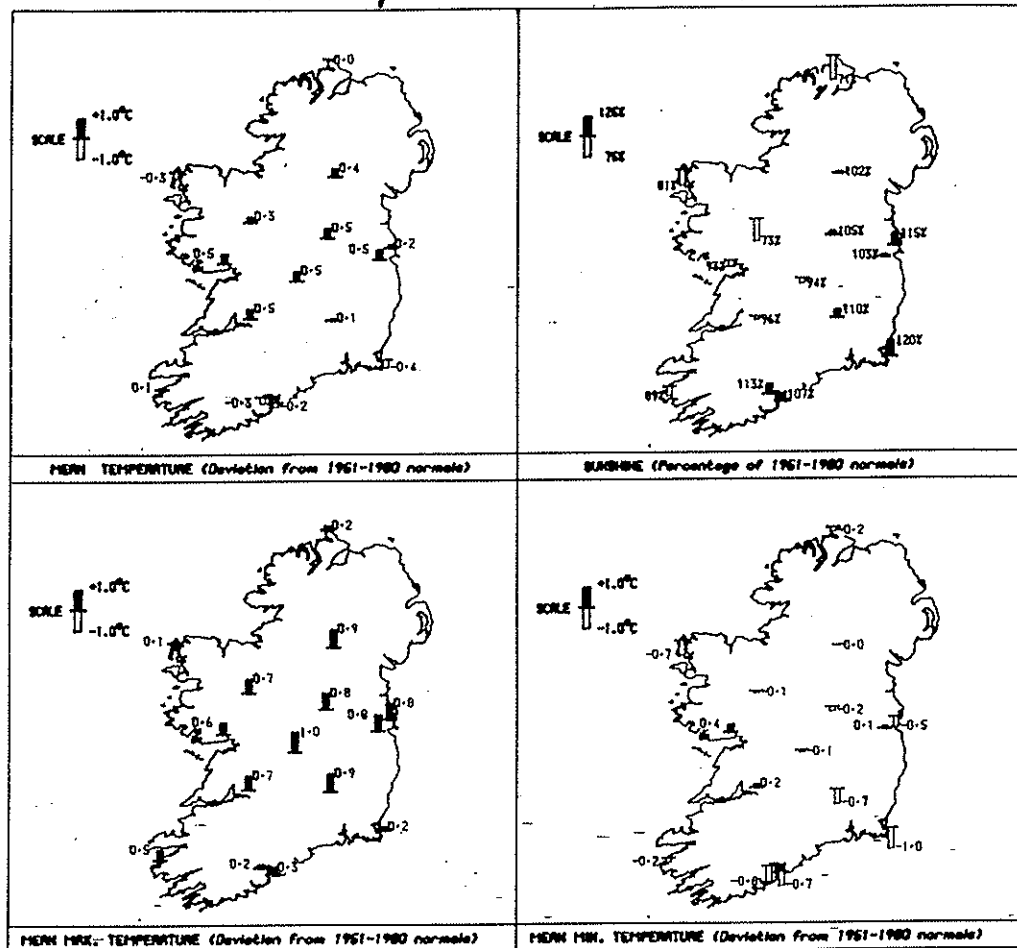
# Weather picture on Christmas day 1986

MET2 25 DEC 1986 1200 IR1



The satellite picture was taken at noon on Christmas day. Rainfalls over northern Europe had affected Ireland during the early hours of Christmas morning and while the rain had cleared from most parts during the forenoon, it continued on and off throughout the day in Southern regions. This was due to a small wave disturbance on the cold front which tracked eastwards just off the south coast, finally moving into northern Europe early on the 26th.

# December 1986 Totals, Means and Extremes



Station	Rainfall			Air Temperature						Sunshine		Wind		Number of days with							
	Total	Most in a Day		Means of		Extreme Temperature				Total	Most in a Day		Max Gale Gust	Rain	Snow	Frost	Mist	Thunder	Fog	Gale Force	
		Amount	Date(s)	Max	Min	Max	Min	Max	Date(s)		Min	Date(s)									Temp
Belmullet	226.7	40.5	4	9.3	3.8	6.6	12.5	3	0.4	8	27.2	4.2	21	71	29	3	-	13	2	-	25
Birr	126.6	14.7	7	9.3	2.6	6.0	14.6	5	-3.7	22	41.6	6.1	21	57	26	3	3	-	-	-	13
Cahircree	247.9	37.4	10	10.6	5.0	7.8	13.7	4, 5	-2.3	23	33.9	6.2	22	79	29	-	2	7	1	-	24
Cavanagh	92.1	22.1	8	9.0	2.7	5.9	13.8	5	-3.8	22	48.4	6.1	22	63	22	2	4	-	1	-	23
Clonsilla	208.9	41.0	4	8.7	2.4	5.6	13.5	20	-1.4	14	27.5	4.3	22	54	29	7	6	6	-	-	19
Clonsilla	132.0	14.0	17	8.4	2.2	5.3	13.5	5	-0.9	14	34.5	4.8	21	52	27	7	9	-	-	-	2, 19
Cork Airport	222.1	28.9	10	8.8	2.8	5.8	13.0	20	-1.7	23	55.8	6.5	21	61	26	8	4	-	-	-	6, 18
Dublin Airport	71.8	20.6	8	9.2	2.9	6.1	14.2	5	-2.1	22	60.5	6.6	22	54	22	3	4	-	-	-	2, 15
Galway	176.2	23.9	30	9.2	3.6	6.4	13.8	3	-0.4	9	43.2	5.8	22	58	29	3	2	8	-	1	20
Kilbenny	122.8	24.3	8	9.4	-1.6	5.5	14.1	4, 5	-5.1	14	50.9	6.7	22	57	23	8	9	-	-	-	16
Meth Wood	218.9	28.4	29	8.8	4.0	6.4	13.3	3	1.1	14	20.4	5.6	14	44	30	5	-	12	-	-	27
Mullingar	124.3	14.1	30	8.5	1.9	5.2	13.7	5	-2.3	14	50.1	5.9	22	52	25	5	10	-	-	-	14
Roche's Point	165.5	30.5	8	9.7	4.5	7.1	13.3	28	0.9	23	58.4	6.9	22	65	24	1	-	1	-	2	20
Rosslare	158.6	44.8	8	9.5	3.9	6.7	13.0	5	0.3	14	68.2	6.8	22	54	23	-	-	-	-	-	20
Shannon Airport	155.8	18.1	15	9.7	3.8	6.8	14.4	3, 4	-1.2	22	43.1	6.8	21	54	26	-	2	5	1	2	15

(Continued from front page)

air temperature of the month was  $-5.1^{\circ}\text{C}$  recorded at Kilkenny on 14th.

### CHRISTMAS DAY

Between the 18th and the 22nd, winds shifted gradually from west to north, days were cool and nights were frosty but any hope of a white Christmas went when daytime temperatures rose during 23rd and 24th. On Christmas day temperatures ranged  $10^{\circ}\text{C}$  to  $12^{\circ}\text{C}$  compared with normal values of around  $9^{\circ}\text{C}$ . Daytime temperatures were also above normal in the periods 1st to 5th, 28th to 31st and on 15th and 17th. Mean monthly maxima ranged from  $0.7^{\circ}\text{C}$  to  $1.0^{\circ}\text{C}$  above normal in most places except in some coastal districts of the south, west and north. Mean air temperature ranged from  $0.5^{\circ}\text{C}$  above normal in a triangle between Dublin, Galway and Limerick to  $0.4^{\circ}\text{C}$  below normal at Rosslare.

### ANOTHER BLUSTERY MONTH

Strong to gale force winds with gusts of 40 to 55 knots ( 1 knot = 1.15 miles per hour ) effected all areas from 2nd to 7th, on 10th and on 30th. It was in the period 2nd to 7th that the ship the Kowloon Bridge which was so badly demaged by gales in November, eventually sank. Gusts in the range of 60 to 71 knots were recorded on the 12th, 15th and on 18th/19th. Highest gust of the month was 79 knots ( 91 miles per hour ) recorded in a squall during a thunderstorm at Cahirciveen Co. Kerry on Friday the 19th.

### SUNSHINE

Sunshine totals for the month ranged from 40.6 hours at Malin Head to 68.2 hours at Rosslare in the southeast. There was also a distinct northwest to southeast gradient in the percentages of normal which ranged from the low seventies in the north and northwest to 120% in the southeast. The sunniest period was the weekend before Christmas, from Friday the 19th to Monday the 22nd, when over 6 hours of sunshine was recorded daily at some stations especially on 21st/22nd. The highest daily sunshine recorded was 6.9 hours at Roche's Point on 22nd.

### HAIL

With cold westerly or northwesterly winds prevailing during the month, hail was recorded on a number of days but almost exclusively in the north and west of the country. Hail was recorded on 13 days at Belmullet and on 12 days at Malin Head.

# WEATHER OF 1986

There were many notable features of last year's weather. February was extremely dry and cold and was followed by a cold wet and windy spring. The summer was dull, cool and wet with severe thunderstorm activity at the end of June and record-breaking rains in August. The very dry weather of September and early October prevented a disastrously poor harvest while November and December were wet and windy.

It was generally the coldest year since 1963 or before, and at Cahirciveen and Roche's Point, which have over 100 years of records, mean temperatures for the year were the lowest ever. Both the mean maximum ( $0.5$  to  $1.0^{\circ}\text{C}$ ) and the mean minimum ( $0.4$  to  $1.4^{\circ}\text{C}$ ) were well below normal.

Annual rainfall totals ranged from just above normal in East Munster and South Leinster to over 130% of normal at some Connaught stations where it was the wettest year on record. Sunshine totals were normal or a little above at Clones (103%), Dublin Airport and Mullingar, but elsewhere totals ranged from 84% to 97% of normal.

### FOR LATEST FORECAST RING

- Dublin area : 1199
- Leinster and Conyn/Monaghan : (01) 425555
- North Munster/South Connaught : (061) 62677
- South Munster : (021) 964600
- North Connaught/Donegal : (01) 424655