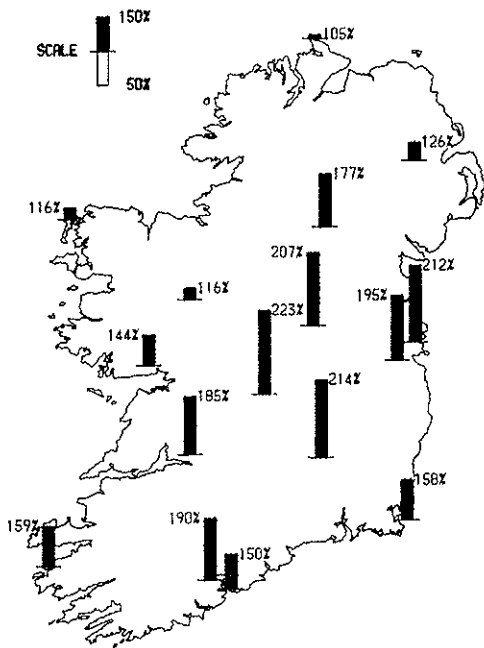


Disappointing start to Summer

For the third year in succession June proved a dull and disappointing month. The poor weather conditions experienced during the month were due to the Atlantic low pressure systems moving eastwards across or just to the south of Ireland, instead of taking their more usual path to the north of the country. In the intervals between the arrivals of these Atlantic depressions winds were generally between northwesterly and northeasterly in direction and conditions were often showery. Towards the end of the month the main depression in the Atlantic took the more usual track near to Iceland rather than Ireland and while the weather remained unsettled temperatures rose considerably. The extreme northwest fared best during the month merely by having near normal totals of sunshine and rainfall, as most areas were dull and wet.



Rainfall percentage of (1951-1980) normals

EXTREMELY DULL MONTH

It was an extremely dull June : the dullest since 1955 at many of our stations in the midlands east and south. The lowest sunshine total recorded was 78.6 hours (44% of normal) at Birr. This made it the dullest June since records began at Birr in 1880. Malin Head, the most northerly point in the country had the highest sunshine total for the month with 174.6 hours. On the 17th, 18th, 22nd and 28th Malin enjoyed more than 10 hours of sunshine while many areas in the south and east had little or no sun. The sunniest day was the 19th when everywhere except the southwest had more than 10 hours of sun and Kilkenny recorded 14.8 hours, the highest daily total for the month. The number of days with more than 5 hours of sunshine ranged from 16 at Malin Head to 4 at Birr.

LOW TEMPERATURES

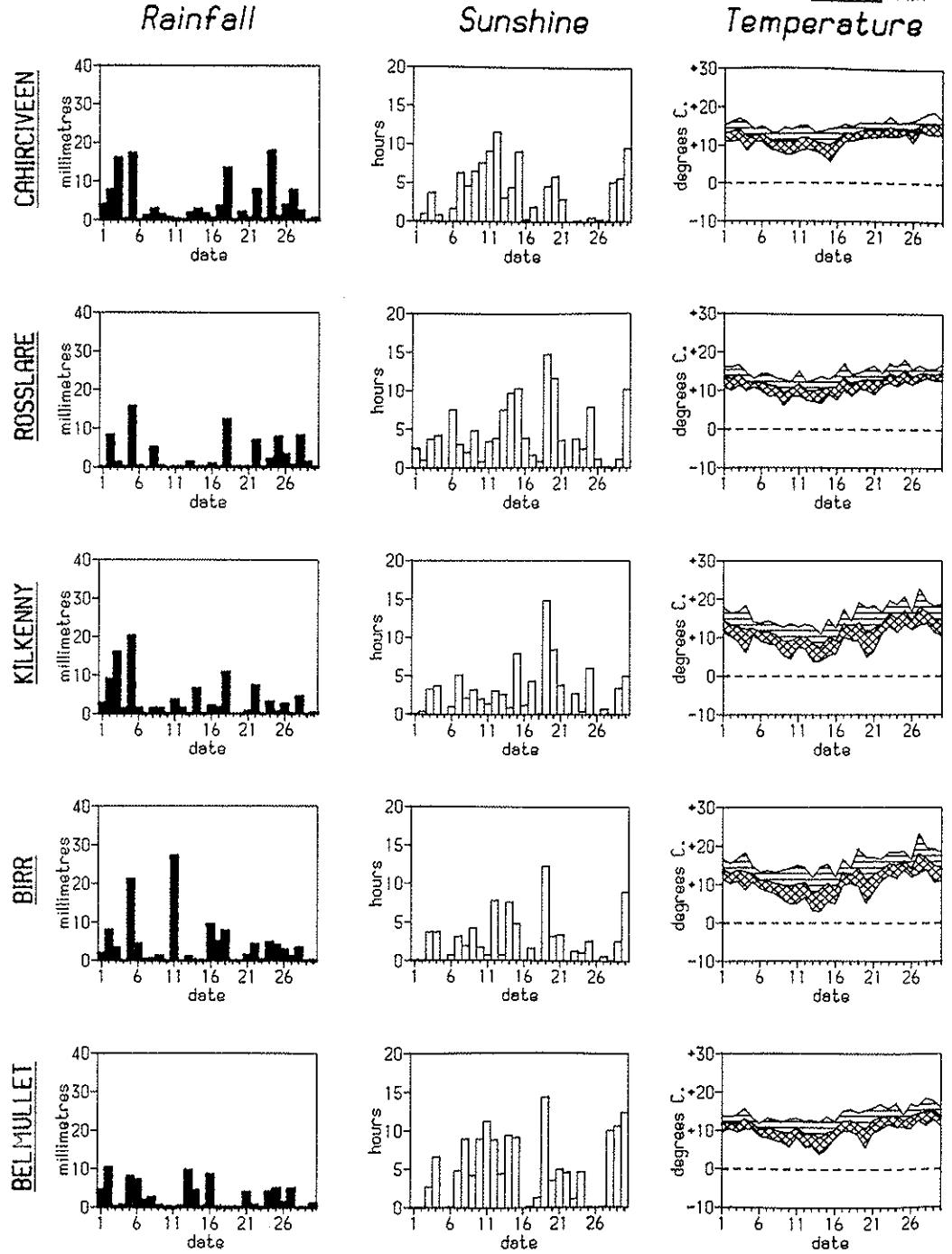
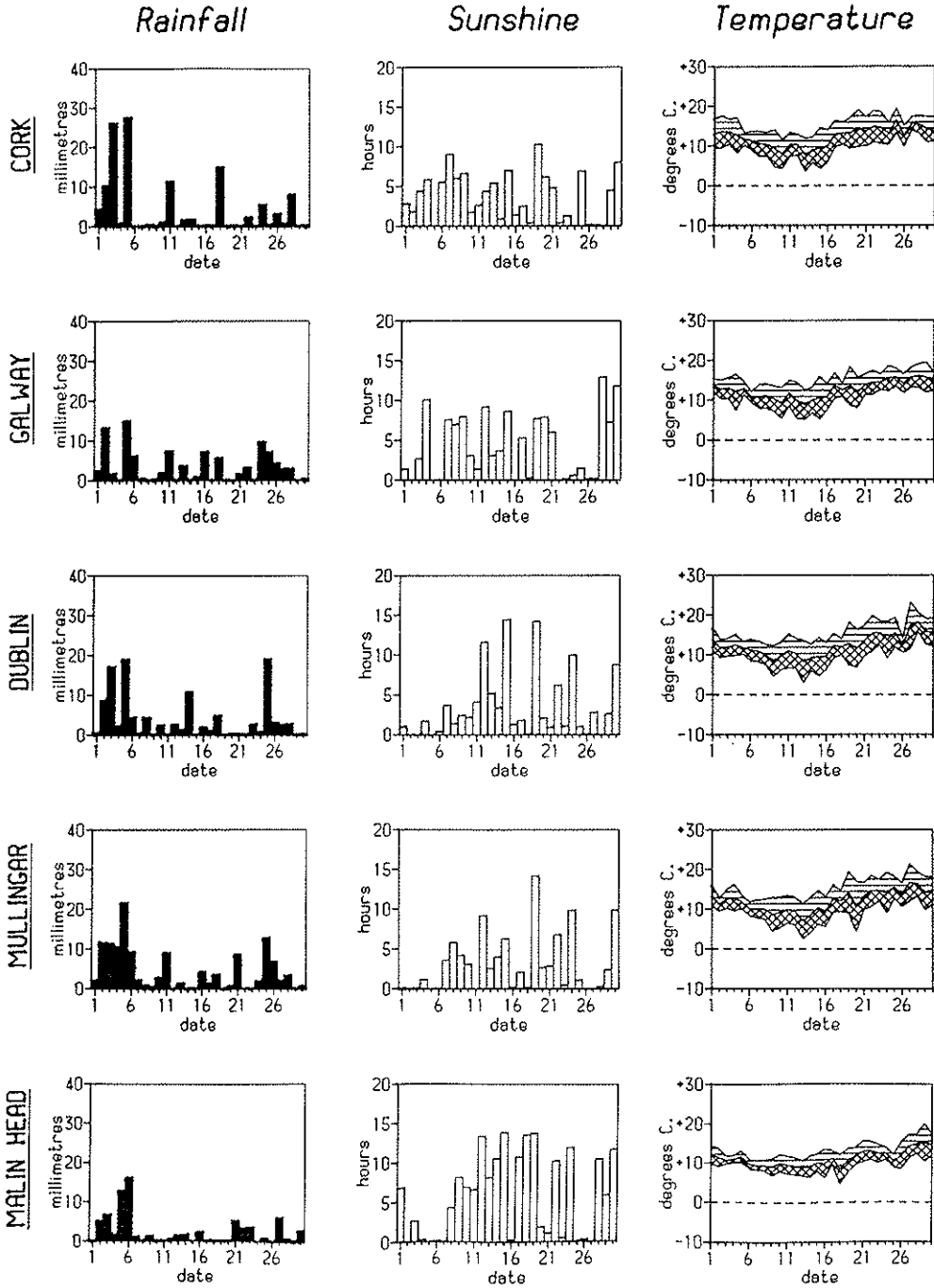
Mean maximum temperatures ranged from 13.5°C at Malin Head to 16.6°C at Shannon Airport and were generally between 1°C and 2°C below their June averages; at a number of stations these were the lowest mean maxima to be recorded since the remarkably cool June in 1972. Indeed, no air temperature in excess of 20°C was recorded at the synoptic stations until the 25th of the month. There was a major change towards the end of the month when a very warm, humid airmass dominated our weather. This produced temperatures of 25°C or more at a number of stations on Saturday the 27th (fair weather for the U2 concert at Croke Park) and a series of high nighttime temperatures giving very warm humid evenings and a more pleasant "summery" aspect to the end of the month.

Between 5th and 18th daytime

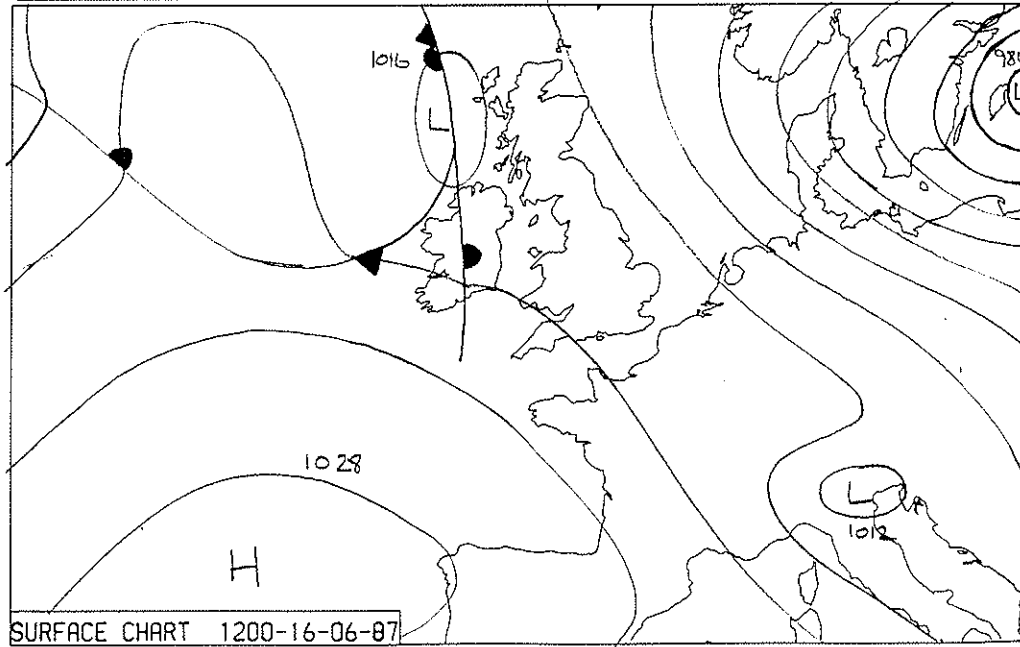
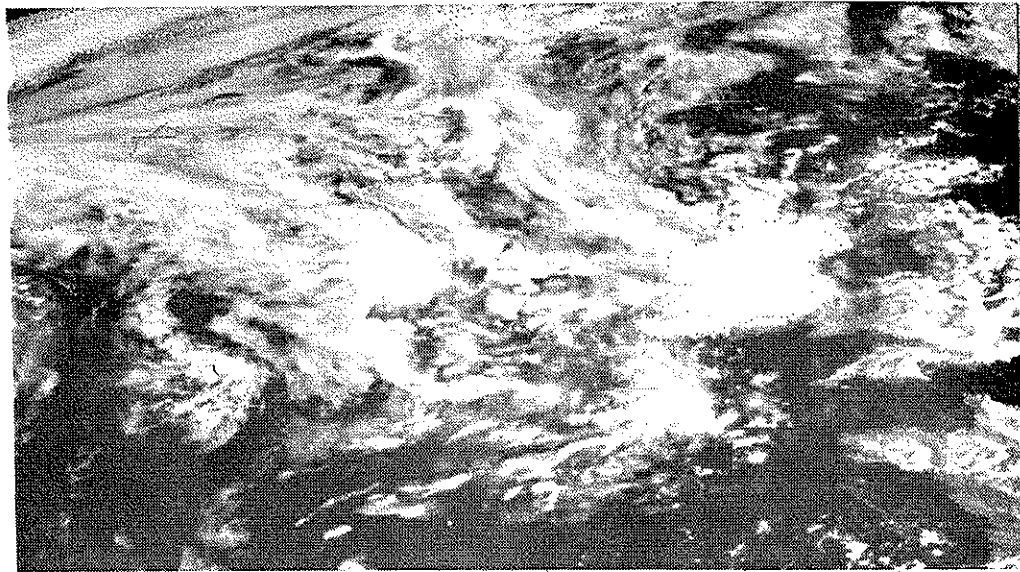
Distribution of Daily Values

Max
 Mean
 Min

Max
 Mean
 Min



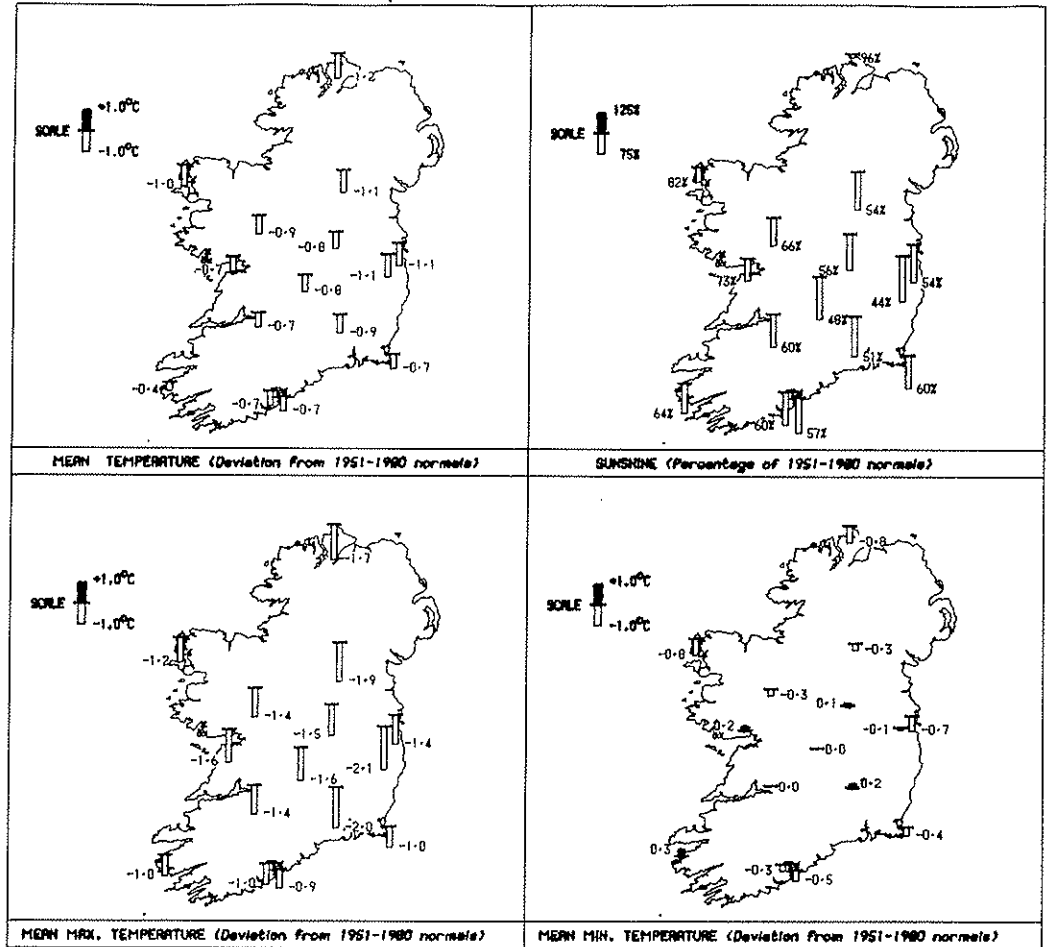
Cloudy over the country on the 16th - 'Bloomsday'



In a day typical of the months weather, Tuesday the 16th saw rainbelts crossing Ireland in a cool westerly airflow. Apart from the east and south which had a dry start with a little sunshine in the morning, it was a cloudy day with rain on and off in most places. This was heaviest in the west and northwest, but light elsewhere. The highest temperatures for the day were 12 to 15 degrees celsius, about 4 or 5 degrees below normal for mid-June. The satellite picture was taken by Meteosat at 1330 and shows the widespread thunderstorms over England that day.

June 1987

Totals, Means and Extremes



Station	Rainfall			Air Temperature						Sunshine		Wind		Number of days with							
	Total	Most in a Day		Means of		Extreme Temperature				Total	Most in a Day		Max Gale Gust	Rain*	Snow	Frost	Hail	Thunder	Fog	Gale Gusts	
		Amount	Date(s)	Max	Min	Mean	Highest	Date(s)	Lowest		Date(s)	Amount									Date(s)
Balmullet	81.5	10.4	2	14.6	9.1	11.9	18.5	28	4.0	14	146.6	14.3	19	42	23	-	-	-	-	2	3
Blir	116.0	27.3	11	16.2	9.0	12.6	23.3	27	3.1	14	78.6	12.3	19	37	22	-	-	1	1	1	1
Cahiraveen	121.1	18.0	24	15.5	10.5	13.0	18.8	29	5.5	15	106.3	11.6	12	37	27	-	-	-	-	1	3
Ceeament	95.7	14.3	25	15.7	8.6	12.2	23.1	27	1.7	13	81.2	12.4	15	48	24	-	-	-	-	2	2
Claremorris	85.8	13.8	2	15.6	8.2	11.9	20.1	28	2.2	12	100.7	12.4	28	35	23	-	-	1	-	2	1
Clones	122.4	30.4	3	15.3	8.4	11.9	20.7	28	2.7	10	85.0	14.5	19	35	22	-	-	-	-	2	1
Cork Airport	121.5	27.7	5	15.7	9.1	12.4	19.5	25	3.7	13	110.9	10.3	19	42	19	-	-	1	2	6	2
Dublin Airport	112.5	19.0	25	15.8	9.0	12.4	23.3	27	2.9	13	104.5	14.4	15	39	23	-	-	1	-	2	2
Galvey	98.2	14.9	5	15.7	9.7	12.7	19.5	29	5.1	13	127.9	12.9	28	44	22	-	-	-	-	3	2
Kilkenny	100.5	20.4	5	16.2	8.9	12.6	22.7	27	3.7	13	87.7	14.8	19	36	21	-	-	-	1	-	1
Melln Head	74.6	16.1	6	13.5	9.0	11.3	20.0	29	4.6	10	174.6	13.9	15	50	19	-	-	-	-	5	-
Mullingar	130.2	21.6	5	15.5	8.7	12.1	21.4	27	2.6	13	93.5	14.2	19	37	26	-	-	-	-	2	1
Roche's Point	75.1	14.0	18	15.6	10.0	12.8	20.5	25	6.2	13	109.2	11.6	19	46	15	-	-	-	-	8	2
Rossiere	77.2	15.8	5	15.1	10.1	12.6	18.3	25	6.2	9	126.6	14.7	19	46	17	-	-	-	-	8	4
Shannon Airport	109.2	23.9	3	16.6	10.1	13.4	23.0	27	4.4	13, 15	100.9	11.2	20	38	25	-	-	-	-	1	2

NOTES: Rainfall in millimetres, Temperatures in Degrees Celsius, Sunshine in Hours and Wind in Knots. Gale Gust = Gust of > 33.5 knots. * = days with 0.2mm or more

(Continued from front page)

temperatures were markedly low and maximum daytime temperatures of less than 12°C were recorded even at some inland stations where normal June values are 18°C to 19°C. Low nighttime temperatures occurred in the period 7th - 16th and some ground frost was recorded, mainly between 10th and 15th. Clones, Cork Airport and Dublin Airport recorded their lowest air temperatures for 10 to 12 years during this period. Mean monthly minima ranged from 0.3°C above normal at Cahirciveen (Valentia Observatory) to 0.8°C below normal in parts of the northwest. Mean temperatures ranged from 0.4°C to 1.2°C below normal, having risen by about 1°C because of conditions during the last week. Nonetheless, these were the lowest mean temperatures for 15 years at Belmullet, Claremorris and Clones.

HIGH RAINFALL

Totals ranged from just about normal in the extreme northwest to over twice the normal rainfall over much of the east and south. At most stations June 1982 was wetter but at Dublin, Mullingar, Clones and Cahirciveen it was the wettest June for 20 to 30 years and at Birr it was the wettest since 1935. There was widespread heavy rain during the periods 2nd-3rd and 5th-6th. With slack northerly winds predominant between 7th and 14th there were scattered showers which on 11th, 13th and 14th were accompanied by hail or thunder in places. Sunday the 21st and Thursday the 25th were also marked by some very heavy showers. On Monday the 22nd (while in England heavy rain stopped the first days play at Wimbledon) persistent rain occurred in the south of the country but parts of the north escaped lightly; this was also the case on the 18th, 24th and 28th.

WINDS

Winds were slack for much of the time and only on 5th and 6th as a deepening depression came up from the southwest and moved northeastwards across the country, were there widespread strong winds with gusts of between 35 and 50 knots.

Fog was reported during the periods 2nd to 4th and 25th to 27th.

MIDSUMMERS DAY

On the 21st of June 1987 a couple of weak troughs crossed the country from the west bringing a fair amount of cloud but little rain. The sun appeared at some stage everywhere but whereas the west had up to 6 hours of sunshine it lasted less than an hour in the Dublin area. Temperatures were generally up on normal for June. The same day last year was notable for outbreaks of heavy thundery rain that occurred over the southern half of the country. The west and north had the best of the weather this day last year while in 1987 the west and south fared best.

RAINFALL RECORDS

The general impression is that it rains quite a lot in Ireland but in fact two out of three hourly observations will not report any measurable rainfall. The average number of wet days (days with over 1mm of rain) ranges from about 150 days a year along the east and south-east coasts, to about 225 days a year in parts of the west. The wettest months, almost everywhere are December and January and the driest month is generally April but in many southern parts, June is the driest.

