

Dry and Cool

- * Absolute maximum temperature lower than last month's.
- * Dullest Spring in 50 years in the west and northwest.

Cool and blustery northwesterly winds gave sunshine and scattered showers on 1st and 2nd. Pressure rose on Sunday the 3rd and there followed a dry spell until 10th with winds westerly or variable. Between 11th and 17th it became more unsettled as rainbelts crossed the country from time to time and winds were mostly between southwest and north in direction. Pressure rose during 18th and 19th and it was dry until Friday the 22nd as winds veered gradually from northerly to easterly.

Between 23rd and 27th there were thundery showers, most widespread in the south and southeast, but in many areas the weather remained dry. On Thursday the 28th there was a change from the continental influence to the Atlantic weather systems which gave some rain over the "bank holiday week-end" which spanned the last three days of the month.

LOW RAINFALL

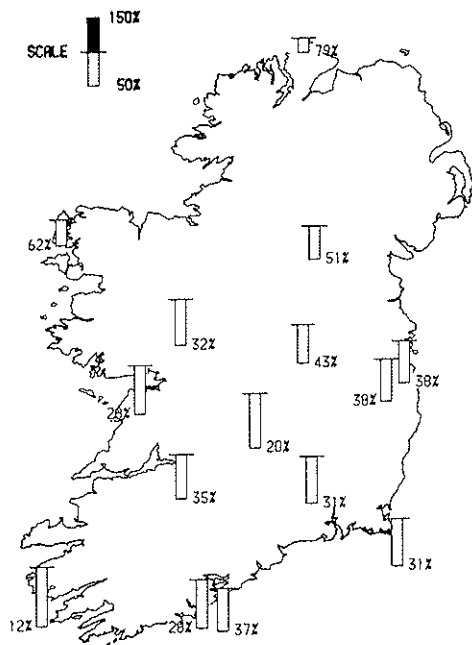
Most areas received less than 40% of the average total for May and in the case of Cahirciveen (Valentia Observatory) it was only 12%. In Ulster and north Connaught between 50% and 90% of normal rainfall was recorded. The total of 10.3 millimetres at Cahirciveen made it the driest May there since 1896 while at Birr (12.6 millimetres) it was the driest since 1915.

COOL

Because winds were frequently between west and north in direction, both mean maximum and mean minimum air temperatures were below normal. Daytime temperatures were well below normal during the periods 1st to 5th and 10th to 18th while the highest daytime temperatures were recorded between 6th (see satellite picture on page 4) and 8th and in the period 20th to 27th. The highest air temperature of the month was 19.5°C recorded at Kilkenny on 26th but this value is lower than the absolute maximum for April last, which was 22.5°C. Between 29th and 30th mean temperatures were above normal mainly because the nights were mild.

Minimum air temperatures were well below normal between 1st and 4th and in the period 13th to 16th. A number of inland synoptic stations had a

(Continued on back page)



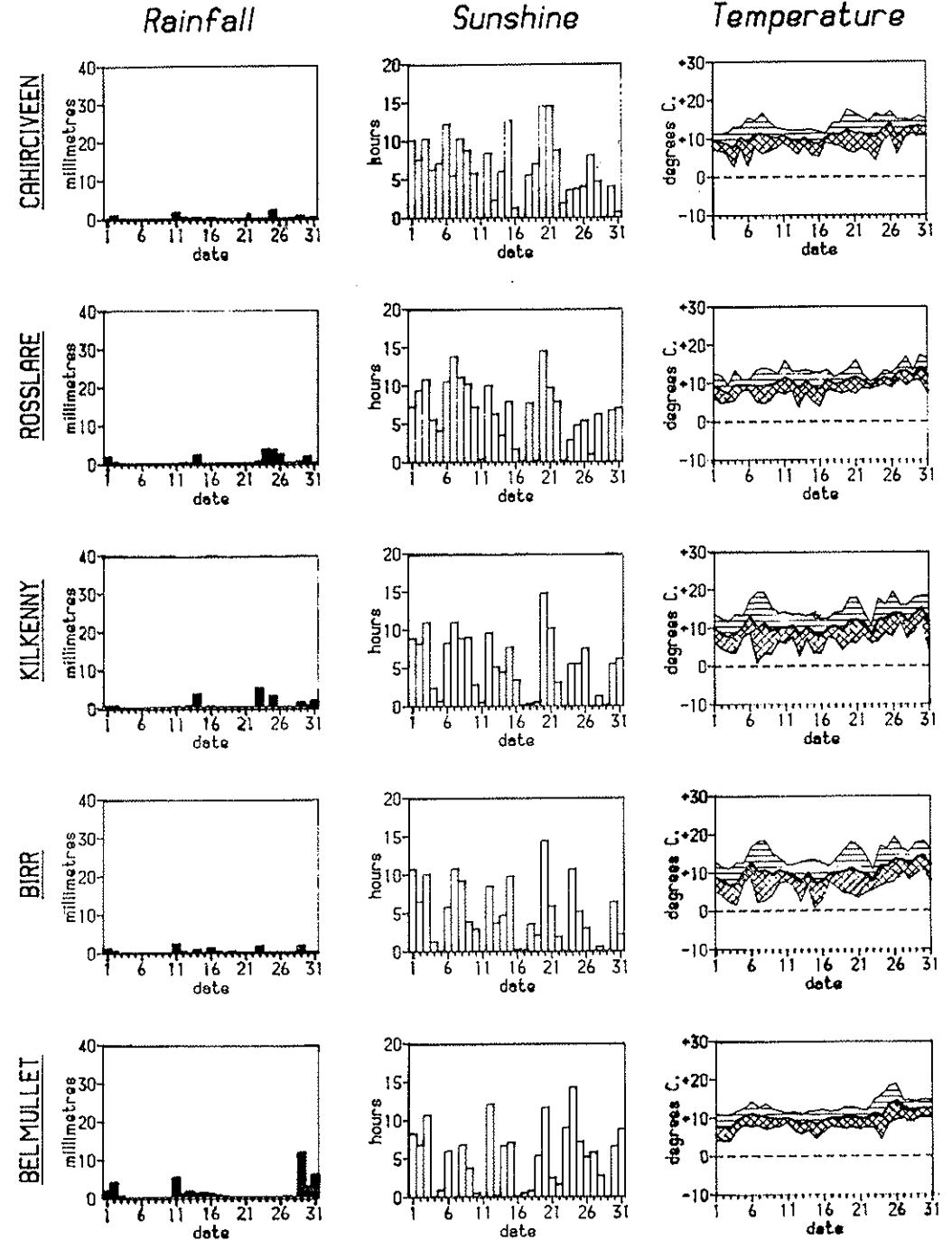
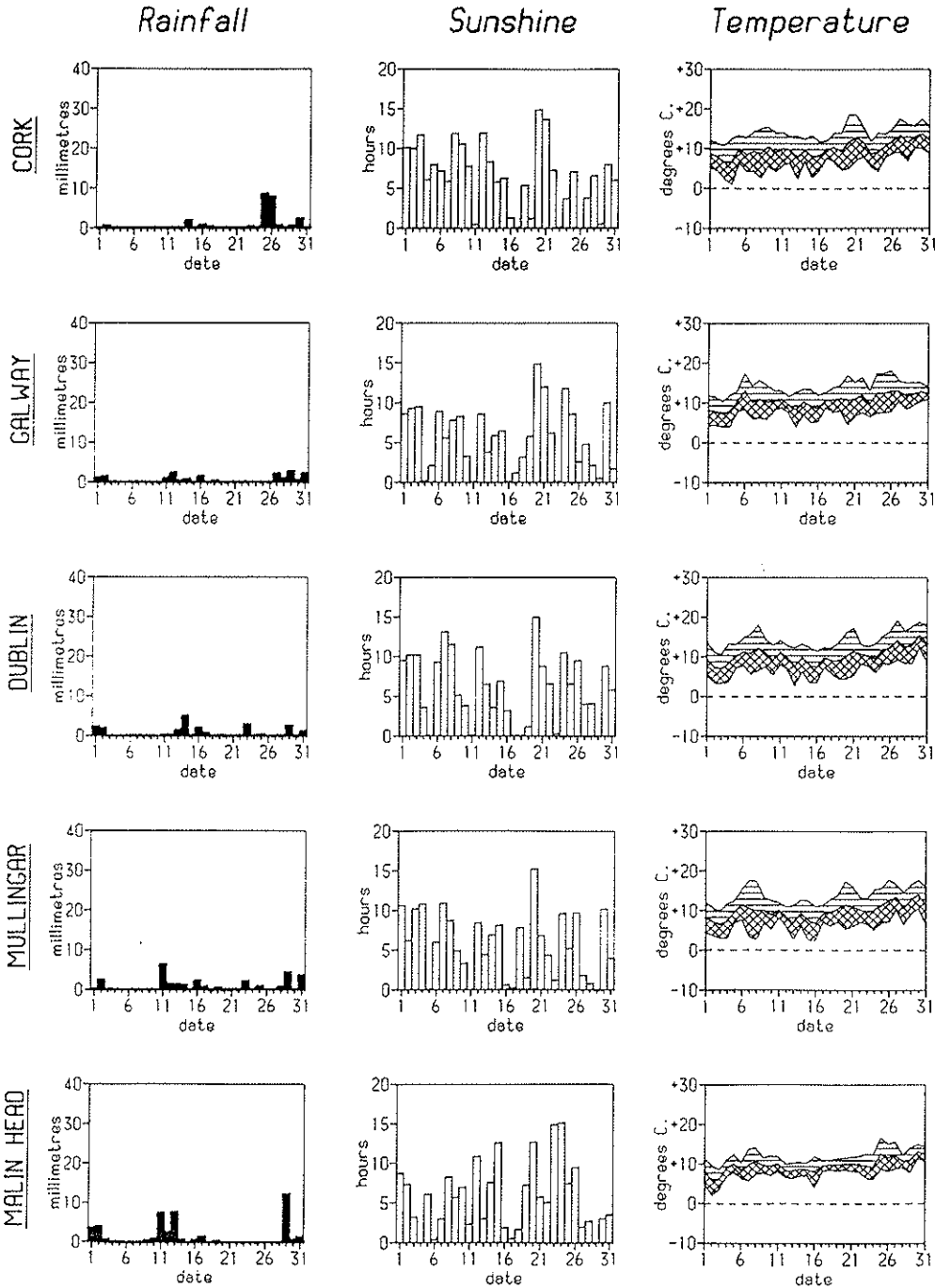
MAY 1987

Distribution of Daily Values

 Max
 Mean
 Min

MAY 1987

 Max
 Mean
 Min



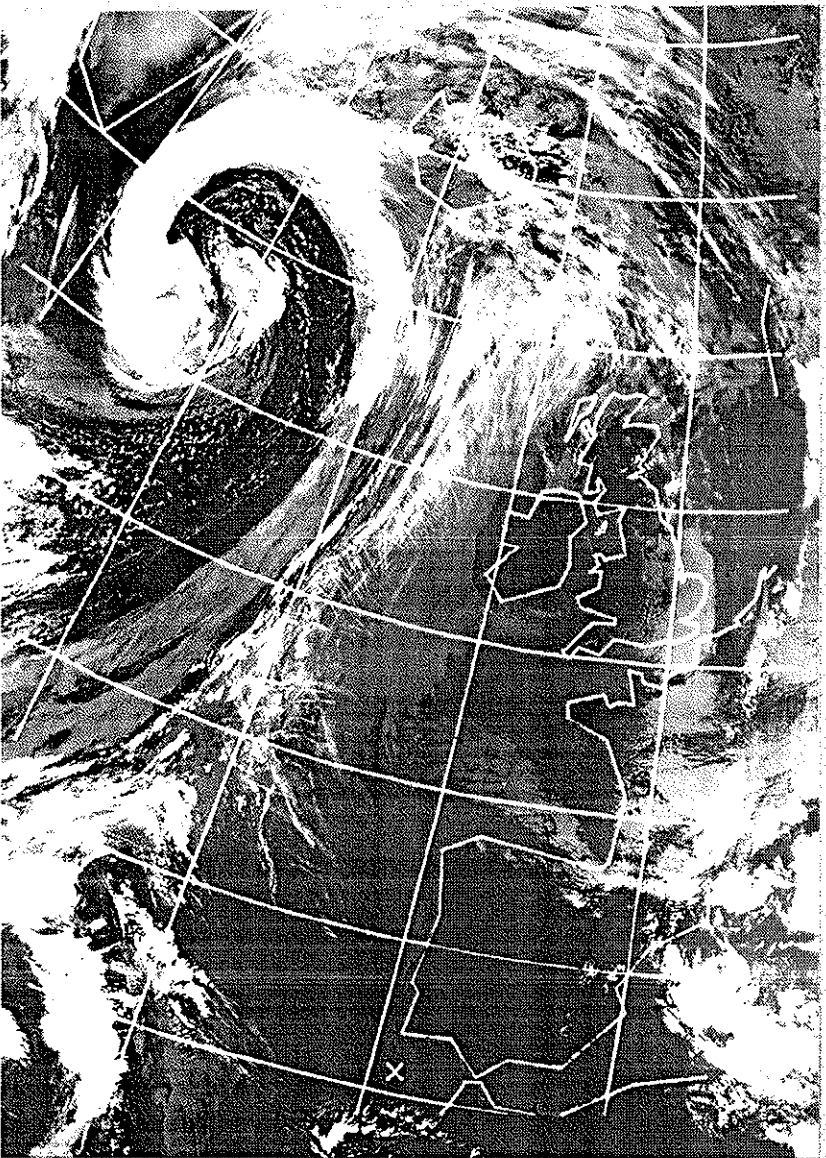
METEOROLOGICAL SERVICE
 WEATHER SUMMARY FOR SPRING

1987

| STATION | RAINFALL | | AIR TEMPERATURE | | | | | SUNSHINE DURATION | | WIND | | NUMBER OF DAYS WITH | | | | | | |
|-----------------|----------|---------------------------|-----------------|------|------|------------|------------|-------------------|---------------------------|-------------|------|---------------------|-----|-----|----|----|----|----|
| | Total | Most in Day Amt't Date | Max. | Min. | Mean | Hi'st Date | Lo'st Date | Total | Most in Day Amt't Date | Max Gust | Gale | Ra* | Snw | Afr | Ha | Th | Fg | Gg |
| Belmullet | 209.5 | 25.4 26Mar | 11.7 | 5.4 | 8.6 | 21.5 25Apr | -2.7 13Mar | 319.7 | 14.3 24May | 59 | | 55 | 11 | 5 | 13 | 1 | 6 | 29 |
| Birr | 132.8 | 12.4 1Mar | 12.6 | 4.4 | 8.5 | 21.5 27Apr | -5.6 12Mar | 307.6 | 14.4 20May | 47 | | 46 | 4 | 10 | 3 | - | 7 | 16 |
| Cahiriveen | 187.3 | 31.2 26Mar | 12.6 | 6.4 | 9.5 | 22.5 28Apr | -2.7 13Mar | 369.8 | 14.5 20May | 59 | | 55 | 2 | 2 | 7 | 2 | 6 | 28 |
| Casement | 171.0 | 35.3 4Apr | 12.4 | 4.1 | 8.3 | 21.3 27Apr | -4.7 12Mar | 367.2 | 14.4 20May | 62 | | 42 | 5 | 10 | 5 | - | 8 | 28 |
| Claremorris | 192.4 | 23.4 1Mar | 12.4 | 4.1 | 8.3 | 21.4 28Apr | -5.2 13Mar | 269.0 | 14.5 20May | 50 | | 52 | 8 | 11 | 10 | - | 6 | 18 |
| Clones | 173.6 | 13.2 1Mar | 11.9 | 4.3 | 8.1 | 21.5 27Apr | -3.6 12Mar | 323.1 | 15.3 20May | 56 | | 52 | 9 | 11 | 4 | - | 6 | 22 |
| Cork Airport | 252.6 | 29.8 26Mar | 11.7 | 4.9 | 8.3 | 19.2 26Apr | -2.0 13Mar | 402.7 | 14.9 20May | 61 | | 52 | 4 | 6 | 7 | 1 | 31 | 27 |
| Dublin Airport | 150.4 | 23.3 4Apr | 12.1 | 4.9 | 8.5 | 20.5 26Apr | -2.6 20Mar | 393.9 | 15.0 20May | 60 | | 46 | 5 | 7 | 1 | - | 21 | 18 |
| Galway | 181.5 | 22.3 1Mar | 12.3 | 5.4 | 8.9 | 21.9 28Apr | -4.0 12Mar | 354.5 | 14.9 20May | 50 | | 55 | 6 | 7 | 7 | - | 8 | 19 |
| Kilkeny | 135.4 | 15.2 4Apr | 12.9 | 4.4 | 8.7 | 21.2 26Apr | -6.3 13Mar | 355.1 | 14.8 20May | 47 | | 46 | 6 | 11 | 4 | 2 | 10 | 16 |
| Malin Head | 185.9 | 12.3 29May | 10.5 | 5.3 | 8.0 | 19.4 17Apr | -2.4 21Mar | 356.6 | 15.1 24May | 64 | | 57 | 6 | 2 | 15 | 1 | 7 | 46 |
| Mullingar | 170.5 | 14.7 1Mar | 11.9 | 4.2 | 8.1 | 21.0 27Apr | -4.3 21Mar | 361.3 | 15.2 20May | 50 | | 53 | 8 | 12 | 5 | - | 8 | 15 |
| Roche's Point | 228.4 | 37.5 3Apr | 11.9 | 6.1 | 9.0 | 19.2 21May | -0.8 21Mar | 409.8 | 14.4 20May | 62 | | 44 | 3 | 2 | 5 | 1 | 22 | 28 |
| Rosslare | 161.6 | 18.6 2Apr | 11.3 | 6.0 | 8.7 | 17.3 30May | -1.9 21Mar | 437.6 | 14.5 20May | 55 | | 41 | 1 | 3 | 3 | - | 15 | 20 |
| Shannon Airport | 144.2 | 11.8 1Mar | 13.0 | 5.9 | 9.5 | 22.0 25Apr | -2.5 13Mar | 366.9 | 14.6 20May | 49 | | 58 | 4 | 3 | 4 | - | 10 | 21 |

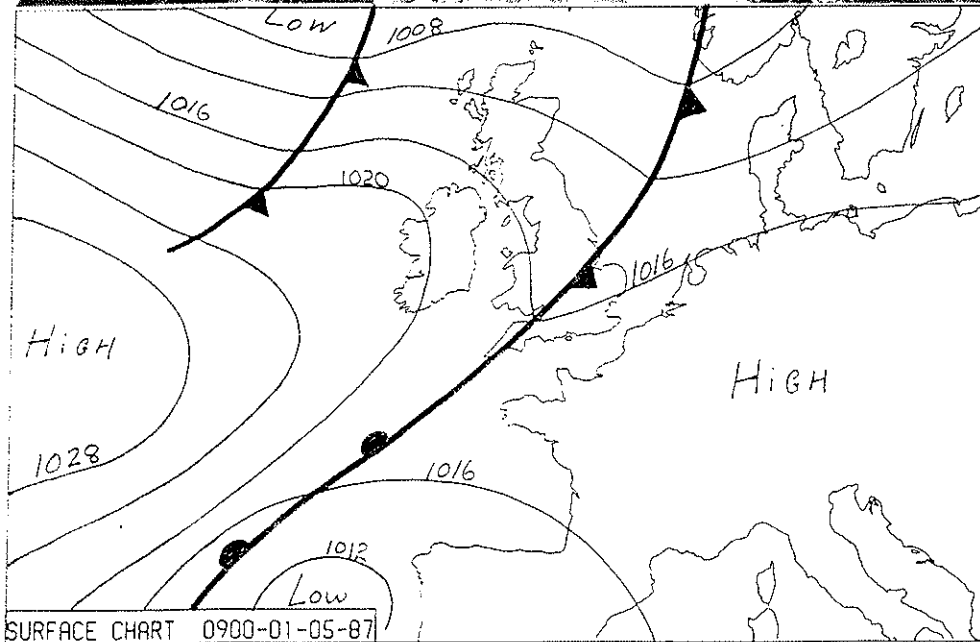
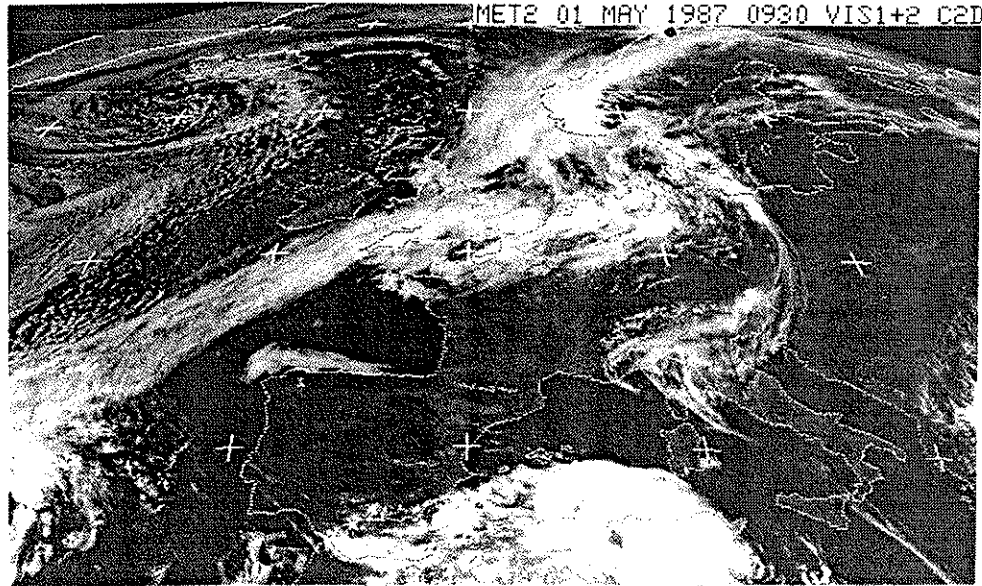
Notes: Rainfall in millimetres, Temperatures in Degrees Celsius, Sunshine in Hours and Wind in knots. * = days with 0.2mm or more
 Gale Gust = Gust > 33.5 kts. Ra = Rain, Snw = Snow, Afr = Air Frost, Ha = Hail, Th = Thunder, Fg = Fog, Gg = Gale Gusts.

MAY 6TH 1987



The satellite picture was taken by the American polar-orbiting satellite NOAA-9. It shows the situation on the 6th of the month at 1530 hours. The picture is courtesy of the University of Dundee.

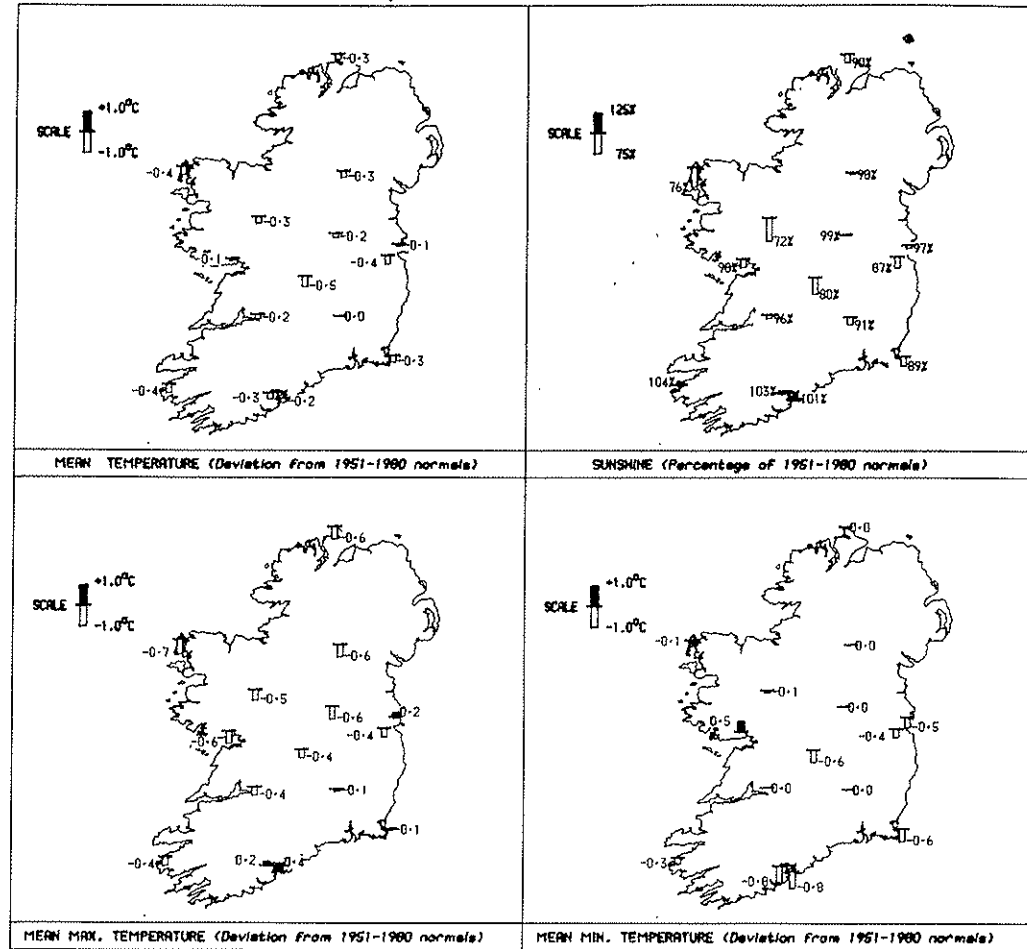
Friday the 1st of May, sunny spells over Ireland



The satellite was taken by the European METEOSAT on the morning of "Mayday" 1987. The cold front, shown in the chart over southern England, had passed over Ireland the previous evening and the prevailing weather was dry and sunny but quite cool with blustery northwesterly winds. As the low pressure area, seen in the satellite picture just to the south of Iceland, moved towards Scotland, an associated showery trough crossed the country in the late afternoon and evening. Rainfall amounts for the day were small, winds were blustery and from a northwesterly direction and temperatures were cool but, sunshine amounts for the day were up to 11 hours in places.

MAY 1987

Totals, Means and Extremes



| Station | Rainfall | | | Air Temperature | | | | | Sunshine | | Wind | | Number of days with | | | | | | | | | |
|-----------------|----------|---------------|------|-----------------|-----|------|------|---------------------|----------|---------------|---------------|------|---------------------|-----------|------|---------|-----|------------|---|---|---|---|
| | Total | Most in a Day | Days | Means of | Max | Min | Mean | Extreme Temperature | Total | Most in a Day | Max Gale Gust | Rein | Snow | Air Frost | Hail | Thunder | Fog | Gale Gusts | | | | |
| Belmullet | 41.8 | 12.0 | 29 | 13.0 | 7.4 | 10.2 | 18.8 | 26 | 4.1 | 2, 3 | 152.2 | 14.3 | 24 | 54 | 15 | - | - | 2 | - | - | 6 | |
| Birr | 12.6 | 2.5 | 11 | 14.7 | 5.7 | 10.2 | 19.3 | 26 | 0.7 | 15 | 144.3 | 14.4 | 20 | 42 | 13 | - | - | - | - | - | 3 | 3 |
| Cahirciveen | 10.3 | 2.4 | 25 | 14.1 | 7.5 | 10.8 | 17.6 | 20 | 2.7 | 4 | 195.6 | 14.5 | 20, 21 | 44 | 13 | - | - | 1 | - | - | 8 | |
| Cesement | 22.1 | 5.0 | 14 | 14.5 | 5.5 | 10.0 | 19.1 | 8 | 1.4 | 16 | 166.0 | 14.4 | 20 | 49 | 12 | - | - | - | - | - | 2 | 5 |
| Claremorris | 23.1 | 4.7 | 2 | 14.2 | 5.8 | 10.0 | 18.2 | 26 | 1.7 | 13 | 124.3 | 14.5 | 20 | 50 | 14 | - | - | 1 | - | - | 1 | 5 |
| Clonee | 33.1 | 8.7 | 2 | 14.0 | 6.1 | 10.1 | 18.6 | 26 | 0.9 | 2 | 166.7 | 15.3 | 20 | 53 | 13 | 1 | - | - | - | - | 4 | |
| Cork Airport | 24.5 | 8.6 | 25 | 14.2 | 5.9 | 10.1 | 18.6 | 21 | 1.0 | 4 | 202.0 | 14.9 | 20 | 51 | 12 | - | - | 2 | - | - | 3 | 7 |
| Dublin Airport | 22.0 | 5.1 | 14 | 14.4 | 6.5 | 10.5 | 19.3 | 27 | 2.9 | 13 | 189.3 | 15.0 | 20 | 52 | 14 | - | - | - | - | - | 2 | 3 |
| Galway | 18.3 | 2.8 | 29 | 14.2 | 7.2 | 10.7 | 18.1 | 26 | 4.0 | 13 | 174.1 | 14.9 | 20 | 50 | 13 | - | - | - | - | - | 1 | 6 |
| Kilcanny | 19.7 | 5.2 | 23 | 15.2 | 6.1 | 10.7 | 19.5 | 26 | 0.8 | 7 | 162.5 | 14.8 | 20 | 46 | 12 | - | - | - | - | 1 | 3 | 3 |
| Malin Head | 45.6 | 12.3 | 29 | 12.1 | 7.3 | 9.7 | 16.7 | 25 | 2.1 | 2 | 179.3 | 15.1 | 24 | 62 | 16 | - | - | 5 | - | - | - | 9 |
| Mullingar | 28.8 | 6.3 | 11 | 13.9 | 6.0 | 10.0 | 17.9 | 26 | 2.6 | 16 | 178.4 | 15.2 | 20 | 50 | 14 | - | - | - | - | - | 3 | 4 |
| Roche's Point | 24.8 | 7.3 | 26 | 14.2 | 7.3 | 10.8 | 19.2 | 21 | 3.4 | 4 | 201.3 | 14.4 | 20 | 58 | 8 | - | - | - | - | - | 3 | 6 |
| Rosslere | 18.0 | 3.8 | 24 | 13.2 | 7.5 | 10.4 | 17.3 | 30 | 3.8 | 13 | 194.0 | 14.5 | 20 | 48 | 10 | - | - | - | - | - | 2 | 5 |
| Shannon Airport | 20.9 | 3.1 | 11 | 15.1 | 7.3 | 11.2 | 18.5 | 8 | 2.6 | 4 | 178.6 | 14.6 | 20 | 44 | 17 | - | - | - | - | - | 2 | 3 |

NOTES: Rainfall in millimetres, Temperatures in Degrees Celsius, Sunshine in Hours and Wind in Knots, Gale Gust = Gust of > 33.5 knots, * = days with 0.2mm or more.

(Continued from front page)

lowest minimum of less than 1°C but none reported air frost.

SUNSHINE

On 12th and 20th all stations recorded a good deal of sunshine, while it was sunny in most places in the periods 1st to 3rd, 6th to 8th and on 15th and 21st. During Saturday the 23rd and Sunday the 24th there was a marked contrast between north and south with Malin Head getting a total of some 30 hours while Rosslare recorded only 3 hours. The highest daily total for the month, 15.3 hours, was recorded on the 20th at Clones, with most other stations recording around 15 hours on the same day.

Totals for the month ranged from 202 hours (103% of normal) at Cork Airport to 124 hours (72% of normal) at Claremorris. In most areas totals were about 90% of normal.

STRONG WINDS

Strong winds were widespread late on 1st to early on 3rd and also on 12th. The strong winds were accompanied by gusts of between 40 and 50 knots, with gusts in the range 50 to 60 knots at some coastal stations on 2nd and 12th.

Highest gust of the month was 62 knots recorded at Malin Head on 2nd. On 25th and again on the night of 29th-30th winds were fresh for a time, chiefly in parts of the south and west where they gusted from 35 to 45 knots.

HAIL AND THUNDER

Thunder was recorded in parts of the southeast and south on 26th and 30th and at Aldergrove on 27th. Hail showers occurred over the weekend from 1st to 3rd and on 12th.

FOG

There was some overnight fog in the period 7th to 9th and on Sunday the 24th.

SPRING 1987

It was the mildest Spring (March-April-May) since 1982, but in ending a succession of cold Springs, mean, maximum and minimum air temperatures were just above the long-term average at most stations (see table on page 5). March, early April and May were cool but there was a warm spell in late April.

Rainfall totals ranged from over 250 millimetres at Cork Airport to less than 140 millimetres at Kilkenny and Birr. March and early April were wet but late April and May were dry.

Sunshine totals were less than 85% of normal except at Cork Airport and Roche's Point (87%) and were as low as 65% at Claremorris, in parts of the west and northwest it was the dullest Spring for more than 50 years.

TEMPERATURE EXTREMES

Although our weather is quite variable we seldom suffer the extremes in temperature which other countries in these latitudes experience. Temperatures in inland areas fell to -10°C during the cold spell in 1982, and during the exceptional summer of 1976 maximum temperatures in excess of 30°C were recorded. Examination of our climatological data bank reveals that we can expect this temperature to occur about once every fifty years.

The highest temperature ever recorded here was 33.3°C at Kilkenny Castle on the 26th of June 1887. The lowest temperature was -19.1°C which was recorded on the 16th of January 1881 at Markree Castle, Co. Sligo. The following table gives the return period of temperatures at specified locations. [We expect a temperature with a return period of five years to occur, on average once every five years.]

| Station (Inland) | 2 | | 5 | | 10 | | 50 | | 100 | |
|------------------|------|------|------|------|------|-------|------|-------|------|-------|
| | max. | min. | max. | min. | max. | min. | max. | min. | max. | min. |
| Birr | 26.0 | -7.3 | 27.8 | -9.7 | 28.9 | -11.4 | 30.7 | -14.4 | 31.4 | -15.8 |
| Phoenix Pk. | 25.5 | -7.4 | 27.2 | -9.8 | 28.3 | -11.4 | 30.5 | -14.4 | 31.3 | -15.7 |
| (Coastal) | | | | | | | | | | |
| Roche's Point | 23.0 | -1.9 | 24.3 | -2.9 | 25.0 | -3.8 | 26.8 | -5.2 | 27.4 | -5.7 |
| Valentia | 24.0 | -3.3 | 26.5 | -4.6 | 27.4 | -5.3 | 29.1 | -6.7 | 29.5 | -7.2 |

Temperatures °C.