

# National Parks and Wildlife Service

---

## *Conservation Objectives Series*

---

### River Moy SAC 002298



An Roinn Ealaíon, Oidhreachta,  
Gnóthaí Réigiúnacha, Tuaithe agus Gaeltachta

---

Department of Arts, Heritage,  
Regional, Rural and Gaeltacht Affairs



**National Parks and Wildlife Service,  
Department of Arts, Heritage, Regional, Rural and Gaeltacht Affairs,  
7 Ely Place, Dublin 2, Ireland.  
Web: [www.npws.ie](http://www.npws.ie)  
E-mail: [nature.conservation@ahg.gov.ie](mailto:nature.conservation@ahg.gov.ie)**

**Citation:**

**NPWS (2016) Conservation Objectives: River Moy SAC 002298. Version 1.  
National Parks and Wildlife Service, Department of Arts, Heritage, Regional,  
Rural and Gaeltacht Affairs.**

**Series Editor: Rebecca Jeffrey  
ISSN 2009-4086**

The overall aim of the Habitats Directive is to maintain or restore the favourable conservation status of habitats and species of community interest. These habitats and species are listed in the Habitats and Birds Directives and Special Areas of Conservation and Special Protection Areas are designated to afford protection to the most vulnerable of them. These two designations are collectively known as the Natura 2000 network.

European and national legislation places a collective obligation on Ireland and its citizens to maintain habitats and species in the Natura 2000 network at favourable conservation condition. The Government and its agencies are responsible for the implementation and enforcement of regulations that will ensure the ecological integrity of these sites.

A site-specific conservation objective aims to define favourable conservation condition for a particular habitat or species at that site.

The maintenance of habitats and species within Natura 2000 sites at favourable conservation condition will contribute to the overall maintenance of favourable conservation status of those habitats and species at a national level.

Favourable conservation status of a habitat is achieved when:

- its natural range, and area it covers within that range, are stable or increasing, and
- the specific structure and functions which are necessary for its long-term maintenance exist and are likely to continue to exist for the foreseeable future, and
- the conservation status of its typical species is favourable.

The favourable conservation status of a species is achieved when:

- population dynamics data on the species concerned indicate that it is maintaining itself on a long-term basis as a viable component of its natural habitats, and
- the natural range of the species is neither being reduced nor is likely to be reduced for the foreseeable future, and
- there is, and will probably continue to be, a sufficiently large habitat to maintain its populations on a long-term basis.

### **Notes/Guidelines:**

1. The targets given in these conservation objectives are based on best available information at the time of writing. As more information becomes available, targets for attributes may change. These will be updated periodically, as necessary.
2. An appropriate assessment based on these conservation objectives will remain valid even if the targets are subsequently updated, providing they were the most recent objectives available when the assessment was carried out. It is essential that the date and version are included when objectives are cited.
3. Assessments cannot consider an attribute in isolation from the others listed for that habitat or species, or for other habitats and species listed for that site. A plan or project with an apparently small impact on one attribute may have a significant impact on another.
4. Please note that the maps included in this document do not necessarily show the entire extent of the habitats and species for which the site is listed. This should be borne in mind when appropriate assessments are being carried out.
5. When using these objectives, it is essential that the relevant backing/supporting documents are consulted, particularly where instructed in the targets or notes for a particular attribute.

## Qualifying Interests

\* indicates a priority habitat under the Habitats Directive

---

002298	River Moy SAC
1092	White-clawed Crayfish <i>Austropotamobius pallipes</i>
1095	Sea Lamprey <i>Petromyzon marinus</i>
1096	Brook Lamprey <i>Lampetra planeri</i>
1106	Salmon <i>Salmo salar</i>
1355	Otter <i>Lutra lutra</i>
7110	Active raised bogs*
7120	Degraded raised bogs still capable of natural regeneration
7150	Depressions on peat substrates of the Rhynchosporion
7230	Alkaline fens
91A0	Old sessile oak woods with <i>Ilex</i> and <i>Blechnum</i> in the British Isles
91E0	Alluvial forests with <i>Alnus glutinosa</i> and <i>Fraxinus excelsior</i> (Alno-Padion, Alnion incanae, Salicion albae)*

**Please note that this SAC overlaps with Killala Bay/Moy Estuary SPA (004036) and Lough Conn and Lough Cullin SPA (004228). It is adjacent to Killala Bay/Moy Estuary SAC (000458), Lough Hoe Bog SAC (000633), Bellacorick Bog Complex SAC (001922) and Ox Mountains Bogs SAC (002006). See map 2. The conservation objectives for this site should be used in conjunction with those for overlapping and adjacent sites as appropriate.**



## Supporting documents, relevant reports & publications

Supporting documents, NPWS reports and publications are available for download from: [www.npws.ie/Publications](http://www.npws.ie/Publications)

### NPWS Documents

<b>Year :</b>	1998
<b>Title :</b>	Conservation management of the white-clawed crayfish, ( <i>Austropotamobius pallipes</i> )
<b>Author :</b>	Reynolds, J.D.
<b>Series :</b>	Irish Wildlife Manual No. 1
<b>Year :</b>	2004
<b>Title :</b>	The status and distribution of lamprey and shad in the Slaney and Munster Blackwater SACs
<b>Author :</b>	King, J.J.; Linnane, S.M.
<b>Series :</b>	Irish Wildlife Manuals No. 14
<b>Year :</b>	2004
<b>Title :</b>	A survey of juvenile lamprey populations in the Moy catchment
<b>Author :</b>	O'Connor, W.
<b>Series :</b>	Irish Wildlife Manuals No. 15
<b>Year :</b>	2006
<b>Title :</b>	Otter survey of Ireland 2004/2005
<b>Author :</b>	Bailey, M.; Rochford, J.
<b>Series :</b>	Irish Wildlife Manual No. 23
<b>Year :</b>	2006
<b>Title :</b>	Assessment of impacts of turf cutting on designated raised bogs
<b>Author :</b>	Fernandez Valverde, F.; MacGowan, F.; Farrell, M.; Crowley, W.; Croal, Y.; Fanning, M.; McKee, A-M.
<b>Series :</b>	Unpublished report to NPWS
<b>Year :</b>	2007
<b>Title :</b>	Supporting documentation for the Habitats Directive Conservation Status Assessment - backing documents. Article 17 forms and supporting maps
<b>Author :</b>	NPWS
<b>Series :</b>	Unpublished report to NPWS
<b>Year :</b>	2008
<b>Title :</b>	National survey of native woodlands 2003-2008
<b>Author :</b>	Perrin, P.M.; Martin, J.; Barron, S.; O'Neill, F.H.; McNutt, K.E.; Delaney, A.
<b>Series :</b>	Unpublished Report to NPWS
<b>Year :</b>	2010
<b>Title :</b>	A provisional inventory of ancient and long-established woodland in Ireland
<b>Author :</b>	Perrin, P.M.; Daly, O.H.
<b>Series :</b>	Irish Wildlife Manual No. 46
<b>Year :</b>	2010
<b>Title :</b>	A technical manual for monitoring white-clawed crayfish ( <i>Austropotamobius pallipes</i> ) in Irish lakes
<b>Author :</b>	Reynolds, J., O'Connor, W., O'Keefe, C.; Lynn, D.
<b>Series :</b>	Irish Wildlife Manual No.45
<b>Year :</b>	2012
<b>Title :</b>	Killala Bay/Moy Estuary SAC (00458) Coastal Supporting doc V1
<b>Author :</b>	NPWS
<b>Series :</b>	Conservation objectives supporting document

<b>Year :</b>	2012
<b>Title :</b>	Killala Bay/Moy Estuary SAC (000458) Marine supporting doc v.1
<b>Author :</b>	NPWS
<b>Series :</b>	Conservation objectives supporting document
<b>Year :</b>	2013
<b>Title :</b>	National otter survey of Ireland 2010/12
<b>Author :</b>	Reid, N.; Hayden, B.; Lundy, M.G.; Pietravalle, S.; McDonald, R.A.; Montgomery, W.I.
<b>Series :</b>	Irish Wildlife Manual No. 76
<b>Year :</b>	2014
<b>Title :</b>	Guidelines for a national survey and conservation assessment of upland vegetation and habitats in Ireland, Version 2.0
<b>Author :</b>	Perrin, P.M.; Barron, S.J.; Roche, J.R.; O'Hanrahan, B.
<b>Series :</b>	Irish Wildlife Manual No. 79
<b>Year :</b>	2014
<b>Title :</b>	Raised Bog Monitoring and Assessment Survey 2013
<b>Author :</b>	Fernandez, F.; Connolly K.; Crowley W.; Denyer J.; Duff K.; Smith G.
<b>Series :</b>	Irish Wildlife Manual No. 81
<b>Year :</b>	2014
<b>Title :</b>	National raised bog SAC management plan
<b>Author :</b>	Department of Arts, Heritage and the Gaeltacht
<b>Series :</b>	Draft for consultation. 15 January 2014
<b>Year :</b>	2014
<b>Title :</b>	Derrynabrock Bog (SAC 002298), Co.Roscommon/Mayo, Site Report
<b>Author :</b>	Fernandez, F.; Connolly, K.; Crowley, W.; Denyer J.; Duff K.; Smith G.
<b>Series :</b>	Raised bog monitoring and assessment survey 2013
<b>Year :</b>	2014
<b>Title :</b>	Tawnaghbeg Bog (SAC 002298), Co. Mayo, Site Report
<b>Author :</b>	Fernandez, F.; Connolly, K.; Crowley, W.; Denyer J.; Duff K.; Smith G.
<b>Series :</b>	Raised bog monitoring and assessment survey 2013
<b>Year :</b>	2016
<b>Title :</b>	River Moy SAC (site code: 2298) Conservation objectives supporting document- raised bog habitats V1
<b>Author :</b>	NPWS
<b>Series :</b>	Conservation objectives supporting document

## Other References

<b>Year :</b>	1982
<b>Title :</b>	Otter survey of Ireland
<b>Author :</b>	Chapman, P.J.; Chapman, L.L.
<b>Series :</b>	Unpublished report to Vincent Wildlife Trust
<b>Year :</b>	2002
<b>Title :</b>	Reversing the habitat fragmentation of British woodlands
<b>Author :</b>	Peterken, G.
<b>Series :</b>	WWF-UK, London

<b>Year :</b>	2003
<b>Title :</b>	Monitoring the river, sea and brook lamprey, <i>Lampetra fluviatilis</i> , <i>L. planeri</i> and <i>Petromyzon marinus</i>
<b>Author :</b>	Harvey, J.; Cowx, I.
<b>Series :</b>	Conserving Natura 2000 Rivers Monitoring Series No. 5. English Nature, Peterborough
<b>Year :</b>	2003
<b>Title :</b>	Identifying lamprey. A field key for sea, river and brook lamprey
<b>Author :</b>	Gardiner, R.
<b>Series :</b>	Conserving Natura 2000 rivers, Conservation techniques No. 4. English Nature, Peterborough
<b>Year :</b>	2007
<b>Title :</b>	Evolutionary history of lamprey paired species <i>Lampetra fluviatilis</i> L. and <i>Lampetra planeri</i> Bloch as inferred from mitochondrial DNA variation
<b>Author :</b>	Espanhol, R.; Almeida, P.R.; Alves, M.J.
<b>Series :</b>	Molecular Ecology 16, 1909-1924
<b>Year :</b>	2010
<b>Title :</b>	Otter tracking study of Roaringwater Bay
<b>Author :</b>	De Jongh, A.; O'Neill, L.
<b>Series :</b>	Unpublished draft report to NPWS
<b>Year :</b>	2015
<b>Title :</b>	Behaviour of sea lamprey ( <i>Petromyzon marinus</i> L.) at man-made obstacles during upriver spawning migration: use of telemetry to assess efficacy of weir modifications for improved passage
<b>Author :</b>	Rooney, S.M.; Wightman, G.D.; O Conchuir, R.; King, J.J.
<b>Series :</b>	Biology and Environment: Proc. R. Ir. Acad. 115 B, 1-12
<b>Year :</b>	2015
<b>Title :</b>	River engineering works and lamprey ammocoetes; impacts, recovery, mitigation
<b>Author :</b>	King, J.J.; Wightman, G.D.; Hanna, G.; Gilligan, N.
<b>Series :</b>	Water and Environment Journal, 29, 482-488
<b>Year :</b>	2016
<b>Title :</b>	The status of Irish salmon stocks in 2015 with precautionary catch advice for 2016
<b>Author :</b>	Standing Scientific Committee on Salmon
<b>Series :</b>	Independent scientific report to Inland Fisheries Ireland

## Spatial data sources

<b>Year :</b>	2014
<b>Title :</b>	Scientific Basis for Raised Bog Conservation in Ireland
<b>GIS Operations :</b>	RBSB13_SACs_ARB_DRB dataset, RBSB13_SACs_2012_HB dataset, RBSB13_SACs_DrainagePatterns_5k dataset and RBSB13_SAC_LIDAR_DTMs dataset clipped to SAC boundary. Expert opinion used as necessary to resolve any issues arising
<b>Used For :</b>	Potential 7110; digital elevation model; drainage patterns (maps 3 and 5)
<b>Year :</b>	2013
<b>Title :</b>	Raised Bog Monitoring and Assessment Survey 2013
<b>GIS Operations :</b>	RBMA13_ecotope_map dataset clipped to SAC boundary. Appropriate ecotopes selected and exported to new dataset. Expert opinion used as necessary to resolve any issues arising
<b>Used For :</b>	7110 ecotopes (map 4)
<b>Year :</b>	Digitised 2003
<b>Title :</b>	Raised Bog Restoration Project 1999
<b>GIS Operations :</b>	Ecotope dataset clipped to SAC boundary. Appropriate ecotopes selected and exported to new dataset. Expert opinion used as necessary to resolve any issues arising
<b>Used For :</b>	7110 ecotopes (map 4)
<b>Year :</b>	Revision 2010
<b>Title :</b>	National Survey of Native Woodlands 2003-2008. Version 1
<b>GIS Operations :</b>	QIs selected; clipped to SAC boundary. Expert opinion used as necessary to resolve any issues arising
<b>Used For :</b>	91A0, 91E0 (map 6)
<b>Year :</b>	2005
<b>Title :</b>	OSi Discovery series vector data
<b>GIS Operations :</b>	Creation of a 10m buffer on the terrestrial side of river banks data; creation of 20m buffer applied to canal centreline data. Creation of a 20m buffer applied to river and stream centreline data; These datasets combined with the derived OSi 1:5000 vector lake buffer data. Overlapping regions investigated and resolved; resulting dataset clipped to SAC boundary. Expert opinion used as necessary to resolve any issues arising
<b>Used For :</b>	1355 (no map)
<b>Year :</b>	2010
<b>Title :</b>	OSi 1:5000 IG vector dataset
<b>GIS Operations :</b>	Creation of 80m buffer on the aquatic side of lake data; creation of 10m buffer on the terrestrial side of lake data. These datasets combined with the derived OSi Discovery Series river and canal datasets. Overlapping regions investigated and resolved; resulting dataset clipped to SAC boundary. Expert opinion used as necessary to resolve any issues arising. Creation of 250m buffer on aquatic side of the lake boundary to highlight potential commuting points
<b>Used For :</b>	1355 (map 8)
<b>Year :</b>	2016
<b>Title :</b>	NPWS rare and threatened species database
<b>GIS Operations :</b>	Dataset created from spatial references in database records. Expert opinion used as necessary to resolve any issues arising
<b>Used For :</b>	1092 (map 7)

**7110 Active raised bogs**

**To restore the favourable conservation condition of Active raised bogs in River Moy SAC, which is defined by the following list of attributes and targets:**

Attribute	Measure	Target	Notes
Habitat area	Hectares	Restore area of active raised bog to 132.4ha, subject to natural processes	There are five raised bogs listed for River Moy SAC. The total area of Active Raised Bog (ARB) habitat for these five bogs was mapped at 45.3ha. Area of Degraded Raised Bog (DRB) on the High Bog (HB) has been modelled as 152.4ha. See map 3. However, it is estimated that only 82.1ha is potentially restorable to ARB by drain blocking. The total potential ARB on the HB is therefore estimated to be 127.4ha. Eco-hydrological assessments of the cutover estimates that an additional 5.0ha of bog forming habitats could be restored. The long term target for ARB is therefore 132.4ha. See raised bog supporting document for further details on this and following attributes
Habitat distribution	Occurrence	Restore the distribution and variability of active raised bog across the SAC. See map 4 for most recently mapped distribution	ARB occurs on most of the bogs in the River Moy SAC. DRB occurs on all five bogs in the River Moy SAC. There is also potential for ARB restoration on cutover areas surrounding the bogs (see area target above)
High bog area	Hectares	No decline in extent of high bog necessary to support the development and maintenance of active raised bog. See map 3	The area of high bog within the five raised bogs listed for River Moy SAC in 2012 (latest figure available) was 498.4ha (DAHG 2014)
Hydrological regime: water levels	Centimetres	Restore appropriate water levels throughout the site	For ARB, mean water level needs to be near or above the surface of the bog lawns for most of the year. Seasonal fluctuations should not exceed 20cm, and should only be 10cm below the surface, except for very short periods of time. Open water is often characteristic of soak systems
Hydrological regime: flow patterns	Flow direction; slope	Restore, where possible, appropriate high bog topography, flow directions and slopes. See map 5 for current situation	ARB depends on mean water levels being near or above the surface of bog lawns for most of the year. Long and gentle slopes are the most favourable to achieve these conditions. Changes to flow directions due to subsidence of bogs can radically change water regimes and cause drying out of high quality ARB areas and soak systems
Transitional areas between high bog and adjacent mineral soils (including cutover areas)	Hectares; distribution	Restore adequate transitional areas to support/protect active raised bog and the services it provides	ARB is threatened due to effects of past drainage and peat-cutting around the margins of the bogs within the River Moy SAC. Natural marginal habitats no longer exist. Eco-hydrological assessments have evaluated the potential for ARB restoration on cutover areas (see note for habitat area attribute above)
Vegetation quality: central ecotope, active flush, soaks, bog woodland	Hectares	Restore 66.2ha of central ecotope/active flush/soaks/bog woodland as appropriate	At least 50% of ARB habitat should be high quality (i.e. central ecotope, active flush, soaks, bog woodland). Target area of active raised bog for the site has been set at 132.4ha (see area target above)
Vegetation quality: microtopographical features	Hectares	Restore adequate cover of high quality microtopographical features	High quality microtopography (hummocks, hollows and pools) is well developed in less disturbed parts of the bogs in River Moy SAC
Vegetation quality: bog moss ( <i>Sphagnum</i> ) species	Percentage cover	Restore adequate cover of bog moss ( <i>Sphagnum</i> ) species to ensure peat-forming capacity	<i>Sphagnum</i> cover varies naturally across Ireland with relatively high cover in the east to lower cover in the west. Hummock forming species such as <i>Sphagnum austini</i> are particularly good peat formers. <i>Sphagnum</i> cover and distribution also varies naturally across a site

Typical ARB species: flora	Occurrence	Restore, where appropriate, typical active raised bog flora	Typical flora species include widespread species, as well as those with more restricted distributions but typical of the habitat's subtypes or geographical range
Typical ARB species: fauna	Occurrence	Restore, where appropriate, typical active raised bog fauna	Typical fauna species include widespread species, as well as those with more restricted distributions but typical of the habitat's subtypes or geographical range
Elements of local distinctiveness	Occurrence	Maintain features of local distinctiveness, subject to natural processes	An important feature of interest in relation to the raised bogs in the River Moy SAC is the fact that they occur at the north-western edge of the geographic range of the habitat in Ireland
Negative physical indicators	Percentage cover	Negative physical features absent or insignificant	Negative physical indicators include: bare peat, algae dominated pools and hollows, marginal cracks, tear patterns, subsidence features such as dry mineral mounds/ridges emerging or expanding and evidence of burning
Vegetation composition: native negative indicator species	Percentage cover	Native negative indicator species at insignificant levels	Disturbance indicators include species indicative of conditions drying out such as abundant bog asphodel ( <i>Narthecium ossifragum</i> ), deergrass ( <i>Trichophorum germanicum</i> ) and harestail cotton-grass ( <i>Eriophorum vaginatum</i> ) forming tussocks; abundant magellanic bog-moss ( <i>Sphagnum magellanicum</i> ) in pools previously dominated by <i>Sphagnum</i> species typical of very wet conditions (e.g. feathery bog-moss ( <i>S. cuspidatum</i> )); and indicators of frequent burning events such as abundant <i>Cladonia floerkeana</i> and high cover of carnation sedge ( <i>Carex panicea</i> ) (particularly in true midlands raised bogs)
Vegetation composition: non-native invasive species	Percentage cover	Non-native invasive species at insignificant levels and not more than 1% cover	Most common non-native invasive species include lodgepole pine ( <i>Pinus contorta</i> ), rhododendron ( <i>Rhododendron ponticum</i> ), and pitcherplant ( <i>Sarracenia purpurea</i> )
Air quality: nitrogen deposition	kg N/ha/year	Air quality surrounding bog close to natural reference conditions. The total N deposition should not exceed 5kg N/ha/yr	Change in air quality can result from fertiliser drift; adjacent quarry activities; or other atmospheric inputs. The critical load range for ombrotrophic bogs has been set as between 5 and 10kg N/ha/yr (Bobbink and Hettelingh, 2011). The latest N deposition figures for the area around the bogs in River Moy SAC suggests that the current level is approximately 8.5kg N/ha/yr (Henry and Aherne, 2014)
Water quality	Hydrochemical measures	Water quality on the high bog and in transitional areas close to natural reference conditions	Water chemistry within raised bogs is influenced by atmospheric inputs (rainwater). However, within soak systems, water chemistry is influenced by other inputs such as focused flow or interaction with underlying substrates. Water chemistry in areas surrounding the high bog varies due to influences of different water types (bog water, regional groundwater and run-off from surrounding mineral lands)

## Conservation Objectives for : River Moy SAC [002298]

### 7120 Degraded raised bogs still capable of natural regeneration

The long-term aim for Degraded raised bogs still capable of natural regeneration is that its peat-forming capability is re-established; therefore, the conservation objective for this habitat is inherently linked to that of Active raised bogs (7110) and a separate conservation objective has not been set in River Moy SAC

Attribute	Measure	Target	Notes
-----------	---------	--------	-------

**Conservation Objectives for : River Moy SAC [002298]**

**7150 Depressions on peat substrates of the Rhynchosporion**

Depressions on peat substrates of the Rhynchosporion is an integral part of good quality Active raised bogs (7110) and thus a separate conservation objective has not been set for the habitat in River Moy SAC

<b>Attribute</b>	<b>Measure</b>	<b>Target</b>	<b>Notes</b>
------------------	----------------	---------------	--------------



**7230 Alkaline fens**

**To maintain the favourable conservation condition of Alkaline fens in River Moy SAC, which is defined by the following list of attributes and targets:**

Attribute	Measure	Target	Notes
Habitat area	Hectares	Area stable or increasing, subject to natural processes	The full extent of of this habitat within the SAC is unknown. An extensive area is known to occur as part of a wetland complex on the Glone River, north-west of Ballyhaunis but there are likely to be other areas present in the SAC
Habitat distribution	Occurrence	No decline, subject to natural processes	Full distribution of the habitat in this SAC is currently unknown- see note above
Hydrological regime	Metres	Appropriate natural hydrological regimes necessary to support the natural structure and functioning of the habitat	Maintenance of groundwater, surface water flows and water table levels within natural ranges is essential for this wetland habitat
Peat formation	Flood duration	Active peat formation, where appropriate	In order for peat to form, water levels need to be slightly below or above the soil surface for c.90% of the time (Jim Ryan, pers. comm.)
Water quality: nutrients	Water chemistry measures	Appropriate water quality to support the natural structure and functioning of the habitat	Fens receive natural levels of nutrients (e.g. iron, magnesium and calcium) from water sources. However, they are generally poor in nitrogen and phosphorus with the latter tending to be the limiting nutrient
Vegetation structure: typical species	Percentage	Maintain vegetation cover of typical species including brown mosses and vascular plants	Mosses listed for fen in this SAC include <i>Campylium stellatum</i> , <i>Aneura pinguis</i> and <i>Scorpidium scorpioides</i> while vascular plants include long-stalked yellow sedge ( <i>Carex lepidocarpa</i> ), black bog rush ( <i>Schoenus nigricans</i> ), blunt-flowered rush ( <i>Juncus subnodulosus</i> ), purple moor-grass ( <i>Molinia caerulea</i> ), grass of Parnassus ( <i>Parnassia palustris</i> ), butterwort ( <i>Pinguicula vulgaris</i> ), marsh helleborine ( <i>Epipactis palustris</i> ) and meadow thistle ( <i>Cirsium dissectum</i> ) (internal NPWS files)
Vegetation composition: trees and shrubs	Percentage	Cover of scattered native trees and shrubs less than 10%	Scrub and trees will tend to invade if fen conditions become drier. Attribute and target based on upland habitat conservation assessment criteria (Perrin et al., 2014)
Physical structure: disturbed bare ground	Percentage	Cover of disturbed bare ground less than 10%. Where tufa is present, disturbed bare ground less than 1%	While grazing may be appropriate in this habitat, excessive areas of disturbed bare ground may develop due to unsuitable grazing regimes. Attribute and target based on upland habitat conservation assessment criteria (Perrin et al., 2014)
Physical structure: drainage	Percentage	Areas showing signs of drainage as a result of drainage ditches or heavy trampling less than 10%	Attribute and target based on upland habitat conservation assessment criteria (Perrin et al., 2014)

**91A0 Old sessile oak woods with Ilex and Blechnum in the British Isles**

**To maintain the favourable conservation condition of Old sessile oak woods with *Ilex* and *Blechnum* in the British Isles in River Moy SAC, which is defined by the following list of attributes and targets:**

Attribute	Measure	Target	Notes
Habitat area	Hectares	Area stable or increasing, subject to natural processes	Old sessile oakwoods are likely to occur as mosaics with other woodland types and the total extent within the SAC is unknown. Two sites (1763, 1800) in the SAC were surveyed as part of the the National Survey of Native Woodlands (NSNW) (Perrin et al., 2008). Site 1763 (Pontoon) is an extensive area of woodland and 106.3ha was mapped as this Annex I habitat type (or mosaics containing it). See map 6. NB further areas are likely to be present within the SAC
Habitat distribution	Occurrence	No decline. Woodlands surveyed as part of the NSNW are shown on map 6	The main location of this woodland type in the SAC is Pontoon Woods. See note on area above
Woodland size	Hectares	Area stable or increasing. Where topographically possible, "large"; woods at least 25ha in size and "small" woods at least 3ha in size	The sizes of at least some of the existing woodlands need to be increased in order to reduce habitat fragmentation and benefit those species requiring "deep" woodland conditions (Peterken, 2002). Topographical and land ownership constraints may restrict expansion
Woodland structure: cover and height	Percentage and metres	Diverse structure with a relatively closed canopy containing mature trees; subcanopy layer with semi-mature trees and shrubs; and well-developed herb layer	Described in Perrin et al (2008)
Woodland structure: community diversity and extent	Hectares	Maintain diversity and extent of community types	Described in Perrin et al. (2008)
Woodland structure: natural regeneration	Seedling: sapling: pole ratio	Seedlings, saplings and pole age-classes occur in adequate proportions to ensure survival of woodland canopy	Oak ( <i>Quercus</i> spp.) regenerates poorly. In suitable sites ash ( <i>Fraxinus excelsior</i> ) can regenerate in large numbers although few seedlings reach pole size
Woodland structure: dead wood	m <sup>3</sup> per hectare; number per hectare	At least 30m <sup>3</sup> /ha of fallen timber greater than 10cm diameter; 30 snags/ha; both categories should include stems greater than 40cm diameter	Dead wood is a valuable resource and an integral part of a healthy, functioning woodland ecosystem
Woodland structure: veteran trees	Number per hectare	No decline	Mature and veteran trees are important habitats for bryophytes, lichens, saproxylic organisms and some bird species. Their retention is important to ensure continuity of habitats/niches and propagule sources
Woodland structure: indicators of local distinctiveness	Occurrence	No decline	Includes ancient or long-established woodlands, archaeological and geological features as well as red-data and other rare or localised species. Perrin and Daly (2010) list Pontoon Wood as possible ancient woodland
Vegetation composition: native tree cover	Percentage	No decline. Native tree cover not less than 95%	Species reported in Perrin et al. (2008)

Vegetation composition: typical species	Occurrence	A variety of typical native species present, depending on woodland type, including oak ( <i>Quercus petraea</i> ) and birch ( <i>Betula pubescens</i> )	Species reported in Perrin et al. (2008)
Vegetation composition: negative indicator species	Occurrence	Negative indicator species, particularly non-native invasive species, absent or under control	The following are the most common invasive species in this woodland type: beech ( <i>Fagus sylvatica</i> ), sycamore ( <i>Acer pseudoplatanus</i> ), rhododendron ( <i>Rhododendron ponticum</i> ) and cherry laurel ( <i>Prunus laurocerasus</i> )

## Conservation Objectives for : River Moy SAC [002298]

### 91E0 Alluvial forests with *Alnus glutinosa* and *Fraxinus excelsior* (Alno-Padion, Alnion incanae, Salicion albae)

To maintain the favourable conservation condition of Alluvial forests with *Alnus glutinosa* and *Fraxinus excelsior* (Alno-Padion, Alnion incanae, Salicion albae) in River Moy SAC, which is defined by the following list of attributes and targets:

Attribute	Measure	Target	Notes
Habitat area	Hectares	Area stable or increasing, subject to natural processes	Total extent of this habitat within the SAC is unknown and it may occur in mosaics with other woodland types. Two sites (1763, 1800) within the SAC were surveyed as part of the the National Survey of Native Woodlands (NSNW) (Perrin et al., 2008). Map 6 shows surveyed woodlands including areas classified as 91E0 (2.76ha). NB areas mapped as other wet woodland types may also correspond with this Annex I woodland type. There are also likely to be additional areas of this Annex I woodland type within the SAC
Habitat distribution	Occurrence	No decline. Woodlands surveyed as part of the NSNW are shown on map 6	The area of this habitat identified by the NSNW occurs at Prospect (site 1800) on the western shore of Lough Conn. See note on area above
Woodland size	Hectares	Area stable or increasing. Where topographically possible, "large" woods at least 25ha in size and "small" woods at least 3ha in size	The sizes of at least some of the existing woodlands need to be increased in order to reduce habitat fragmentation and benefit those species requiring 'deep' woodland conditions (Peterken, 2002). Topographical and land-ownership constraints may restrict expansion
Woodland structure: cover and height	Percentage and metres	Diverse structure with a relatively closed canopy containing mature trees; subcanopy layer with semi-mature trees and shrubs; and well-developed herb layer	Described in Perrin et al. (2008)
Woodland structure: community diversity and extent	Hectares	Maintain diversity and extent of community types	Described in Perrin et al. (2008)
Woodland structure: natural regeneration	Seedling: sapling: pole ratio	Seedlings, saplings and pole age-classes occur in adequate proportions to ensure survival of woodland canopy	Alder ( <i>Alnus glutinosa</i> ) and oak ( <i>Quercus</i> spp.) regenerate poorly. Ash ( <i>Fraxinus excelsior</i> ) often regenerates in large numbers although few seedlings reach pole size
Hydrological regime: Flooding depth/height of water table	Metres	Appropriate hydrological regime necessary for maintenance of alluvial vegetation	Periodic flooding is essential to maintain alluvial woodlands along river floodplains and lakeshores
Woodland structure: dead wood	m <sup>3</sup> per hectare; number per hectare	At least 30m <sup>3</sup> /ha of fallen timber greater than 10cm diameter; 30 snags/ha; both categories should include stems greater than 40cm diameter (greater than 20cm diameter in the case of alder)	Dead wood is a valuable resource and an integral part of a healthy, functioning woodland ecosystem
Woodland structure: veteran trees	Number per hectare	No decline	Mature and veteran trees are important habitats for bryophytes, lichens, saproxylic organisms and some bird species. Their retention is important to ensure continuity of habitats/niches and propagule sources
Woodland structure: indicators of local distinctiveness	Occurrence	No decline	Includes ancient or long-established woodlands, archaeological and geological features as well as red-data and other rare or localised species

Vegetation composition: native tree cover	Percentage	No decline. Native tree cover not less than 95%	Species reported in Perrin et al. (2008)
Vegetation composition: typical species	Occurrence	A variety of typical native species present, depending on woodland type, including including alder ( <i>Alnus glutinosa</i> ), willows ( <i>Salix</i> spp.), oak ( <i>Quercus robur</i> ) and ash ( <i>Fraxinus excelsior</i> )	Species reported in Perrin et al. (2008)
Vegetation composition: negative indicator species	Occurrence	Negative indicator species, particularly non-native invasive species, absent or under control	The following are the most common invasive species in this woodland type: sycamore ( <i>Acer pseudoplatanus</i> ) and Himalayan balsam ( <i>Impatiens glandulifera</i> ). The NSNW notes rhododendron ( <i>Rhododendron ponticum</i> ) clearance in site 1800

## Conservation Objectives for : River Moy SAC [002298]

### 1092 White-clawed Crayfish *Austropotamobius pallipes*

To maintain the favourable conservation condition of White-clawed Crayfish in River Moy SAC, which is defined by the following list of attributes and targets:

Attribute	Measure	Target	Notes
Distribution	Occurrence	No reduction from baseline. See map 7	The general distribution of white-clawed crayfish in the SAC is that it is widespread in the upper tributaries of the River Moy and the rivers which feed Loughs Conn and Cullin. It is absent from the main River Moy. The named tributaries that it is recorded from are the following: Upstream of Lough Conn: River Deel and its tributaries of the Toreen River, Rathnamagh River and Rappa Stream; Fiddaunglass; Addergoole River. Upstream of Lough Cullin: Tobergal River; Clydagh; tributaries of the Toormore and Manulla Rivers. Moy tributaries: Gweestion River; tributaries of the Pollagh, Glore, Yellow and Geestaun Rivers; Killeen River; Spaddagh River; Sonnagh River; Owenaher River; Owengarve River
Population structure: recruitment	Occurrence of juveniles and females with eggs	Juveniles and/or females with eggs in all occupied tributaries	See Reynolds et al. (2010) for further details
Negative indicator species	Occurrence	No alien crayfish species	Alien crayfish species are identified as a major direct threat to this species and as a disease vector. See Reynolds (1998) for further details. Ireland is currently free of non-native invasive crayfish species
Disease	Occurrence	No instances of disease	Crayfish plague is identified as major threat and has occurred in Ireland even in the absence of alien vectors. See Reynolds (1998) for further details. Disease can in some circumstances be introduced through contaminated equipment and water in the absence of vector species
Water quality	EPA Q value	At least Q3-4 at all sites sampled by EPA	Target taken from Demers and Reynolds (2002). Q values based on triennial water quality surveys carried out by the EPA
Habitat quality: heterogeneity	Occurrence of positive habitat features	No decline in heterogeneity or habitat quality	Crayfish need high habitat heterogeneity. Larger crayfish must have stones to hide under, or an earthen bank in which to burrow. Hatchlings shelter in vegetation, gravel and among fine tree-roots. Smaller crayfish are typically found among weed and debris in shallow water. Larger juveniles in particular may also be found among cobbles and detritus such as leaf litter. These conditions must be available on the whole length of occupied habitat

## Conservation Objectives for : River Moy SAC [002298]

### 1095 Sea Lamprey *Petromyzon marinus*

To maintain the favourable conservation condition of Sea Lamprey in River Moy SAC, which is defined by the following list of attributes and targets:

Attribute	Measure	Target	Notes
Distribution: extent of anadromy	Percentage of river accessible	Greater than 75% of main stem length of rivers accessible from estuary	This SAC only covers the freshwater portion of the River Moy. The adjacent Killala Bay/Moy Estuary SAC (site code: 000485) encompasses the estuarine elements of sea lamprey habitat. Artificial barriers can block or cause difficulties to lampreys' upstream migration, thereby limiting species to lower stretches and restricting access to spawning areas (Rooney et al. 2015), however, there are no artificial barriers in the Moy catchment limiting lamprey access
Population structure of juveniles	Number of age/size groups	At least three age/size groups present	Attribute and target based on Harvey and Cowx (2003) and O'Connor (2007)
Juvenile density in fine sediment	Juveniles/m <sup>2</sup>	Mean catchment juvenile density at least 1/m <sup>2</sup>	Juveniles burrow in areas of fine sediment in still water. Attribute and target based on Harvey and Cowx (2003)
Extent and distribution of spawning habitat	m <sup>2</sup> and occurrence	No decline in extent and distribution of spawning beds	Attribute and target based on spawning bed mapping by Inland Fisheries Ireland (IFI). Lampreys spawn in clean gravels
Availability of juvenile habitat	Number of positive sites in 3rd order channels (and greater), downstream of spawning areas	More than 50% of sample sites positive	Silting habitat is essential for larval lamprey and they can be severely impacted by sediment removal. Recovery can be rapid and newly-created habitat can be rapidly colonised (King et al., 2015). However, it is vital that such sedimenting habitats are retained. Occupancy in excess of 50% of sites would be 'reasonable' for the Irish catchments examined to date. (King and Linnane, 2004; King et al., unpublished data)

## Conservation Objectives for : River Moy SAC [002298]

### 1096 Brook Lamprey *Lampetra planeri*

To maintain the favourable conservation condition of Brook Lamprey in River Moy SAC, which is defined by the following list of attributes and targets:

Attribute	Measure	Target	Notes
Distribution	Percentage of river accessible	Access to all watercourses down to first order streams	Artificial barriers can block lampreys' migration both up- and downstream, thereby possibly limiting species to specific stretches, restricting access to spawning areas and creating genetically isolated populations (Espanhol et al., 2007). However, there are no artificial barriers in the Moy catchment limiting lamprey access
Population structure of juveniles	Number of age/size groups	At least three age/size groups of brook/river lamprey present	Attribute and target based on data from Harvey and Cowx (2003). It is impossible to distinguish between brook and river lamprey juveniles in the field (Gardiner, 2003), hence they are considered together in this target
Juvenile density in fine sediment	Juveniles/m <sup>2</sup>	Mean catchment juvenile density of brook/river lamprey at least 2/m <sup>2</sup>	Juveniles burrow in areas of fine sediment in still water. Attribute and target based on data from Harvey and Cowx (2003) who state 10/m <sup>2</sup> in optimal conditions and more than 2/m <sup>2</sup> on a catchment basis
Extent and distribution of spawning habitat	m <sup>2</sup> and occurrence	No decline in extent and distribution of spawning beds	Attribute and target based on spawning bed mapping by Inland Fisheries Ireland (IFI). Lampreys spawn in clean gravels
Availability of juvenile habitat	Number of positive sites in 2nd order channels (and greater), downstream of spawning areas	More than 50% of sample sites positive	Silting habitat is essential for larval lamprey and they can be severely impacted by sediment removal. Recovery can be rapid and newly-created habitat can be rapidly colonised (King et al., 2015). However, it is vital that such sedimenting habitats are retained. Occupancy in excess of 50% of sites would be 'reasonable' for the Irish catchments examined to date. (King and Linnane, 2004; King et al., unpublished data)



## Conservation Objectives for : River Moy SAC [002298]

### 1106 Salmon *Salmo salar*

To maintain the favourable conservation condition of Salmon in River Moy SAC, which is defined by the following list of attributes and targets:

Attribute	Measure	Target	Notes
Distribution: extent of anadromy	Percentage of river accessible	100% of river channels down to second order accessible from estuary	Artificial barriers block salmon's upstream migration, thereby limiting species to lower stretches and restricting access to spawning areas. There are no artificial barriers on the Moy catchment limiting salmon access
Adult spawning fish	Number	Conservation Limit (CL) for each system consistently exceeded	A conservation limit is defined by the North Atlantic Salmon Conservation Organisation (NASCO) as "the spawning stock level that produces long-term average maximum sustainable yield as derived from the adult to adult stock and recruitment relationship". The target is based on the Standing Scientific Committee of the National Salmon Commission's annual model output of CL attainment levels. See SSC (2016). Stock estimates are either derived from direct counts of adults (rod catch, fish counter) or indirectly by fry abundance counts. For the 2016 SSC advice, the Moy is currently exceeding its CL by 19,012 salmon
Salmon fry abundance	Number of fry/5 minutes electrofishing	Maintain or exceed 0+ fry mean catchment-wide abundance threshold value. Currently set at 17 salmon fry/5 minutes sampling	Target is threshold value for rivers currently exceeding their conservation limit (CL)
Out-migrating smolt abundance	Number	No significant decline	Smolt abundance can be negatively affected by a number of impacts such as estuarine pollution, predation and sea lice ( <i>Lepeophtheirus salmonis</i> )
Number and distribution of redds	Number and occurrence	No decline in number and distribution of spawning redds due to anthropogenic causes	Salmon spawn in clean gravels. There are no artificial barriers preventing salmon from accessing suitable spawning habitat in this SAC
Water quality	EPA Q value	At least Q4 at all sites sampled by EPA	Q values based on triennial water quality surveys carried out by the Environmental Protection Agency (EPA)

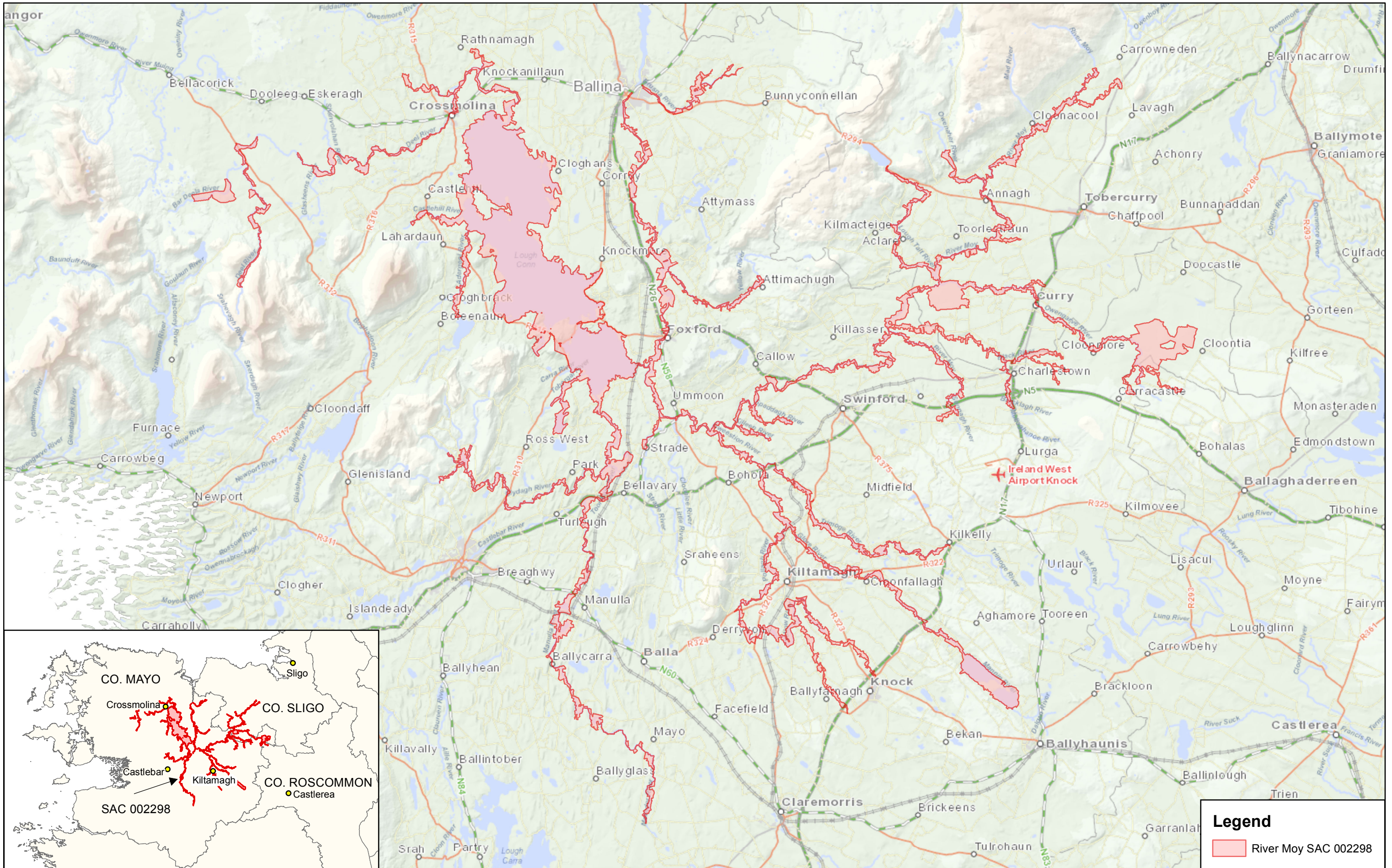
## Conservation Objectives for : River Moy SAC [002298]

### 1355 Otter *Lutra lutra*

To maintain the favourable conservation condition of Otter in River Moy SAC, which is defined by the following list of attributes and targets:

Attribute	Measure	Target	Notes
Distribution	Percentage positive survey sites	No significant decline	Measure based on standard otter survey technique. FCS target, based on 1980/81 survey findings, is 88% in SACs. Current range is estimated at 93.6% (Reid et al., 2013)
Extent of terrestrial habitat	Hectares	No significant decline. Area mapped and calculated as 1068.8ha	No field survey. Areas mapped to include 10m terrestrial buffer along lake shorelines and along river banks identified as critical for otters (NPWS, 2007)
Extent of freshwater (river) habitat	Kilometres	No significant decline. Length mapped and calculated as 479.4km	No field survey. River length calculated on the basis that otters will utilise freshwater habitats from estuary to headwaters (Chapman and Chapman, 1982)
Extent of freshwater (lake) habitat	Hectares	No significant decline. Area mapped and calculated as 1248.2ha	No field survey. Area mapped based on evidence that otters tend to forage within 80m of the shoreline (NPWS, 2007)
Couching sites and holts	Number	No significant decline	Otters need lying up areas throughout their territory where they are secure from disturbance (Kruuk, 2006; Kruuk and Moorhouse, 1991)
Fish biomass available	Kilograms	No significant decline	Broad diet that varies locally and seasonally, but dominated by fish, in particular salmonids, eels and sticklebacks in freshwater (Bailey and Rochford, 2006; Reid et al., 2013)
Barriers to connectivity	Number	No significant increase. For guidance, see map 8	Otters will regularly commute across stretches of open water up to 500m e.g. between the mainland and an island; between two islands; across an estuary (De Jongh and O'Neill, 2010). It is important that such commuting routes are not obstructed

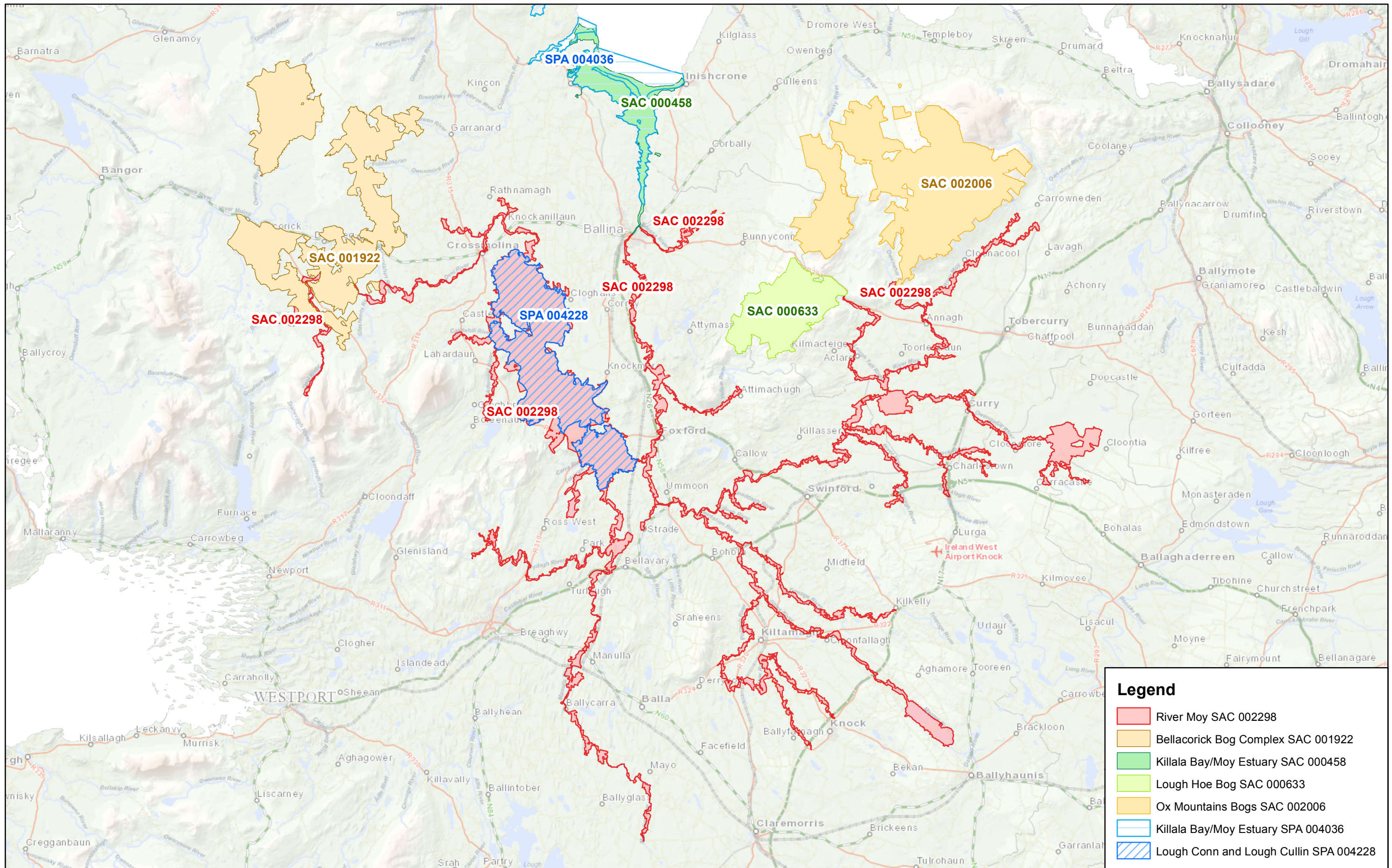




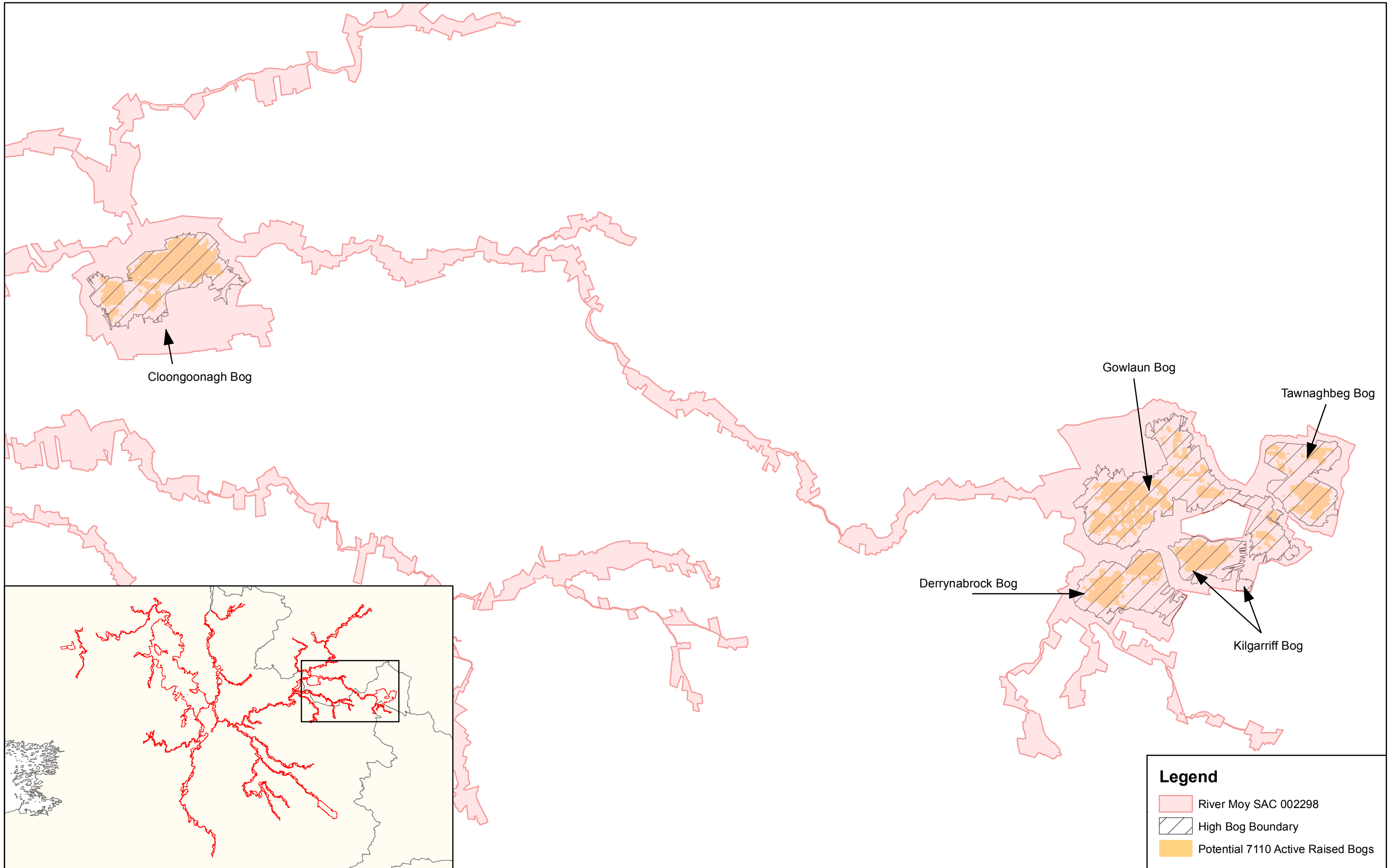
**Legend**

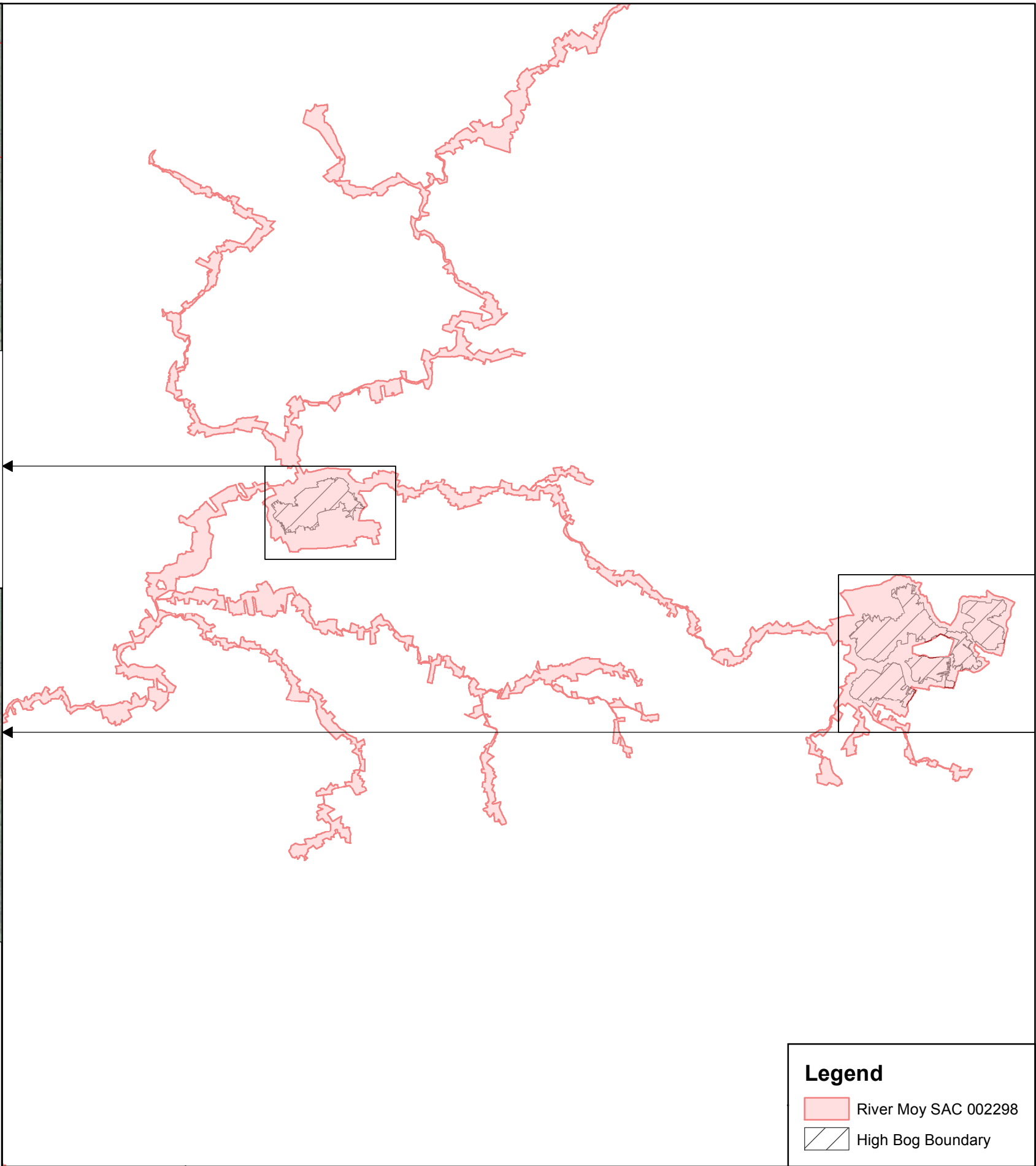
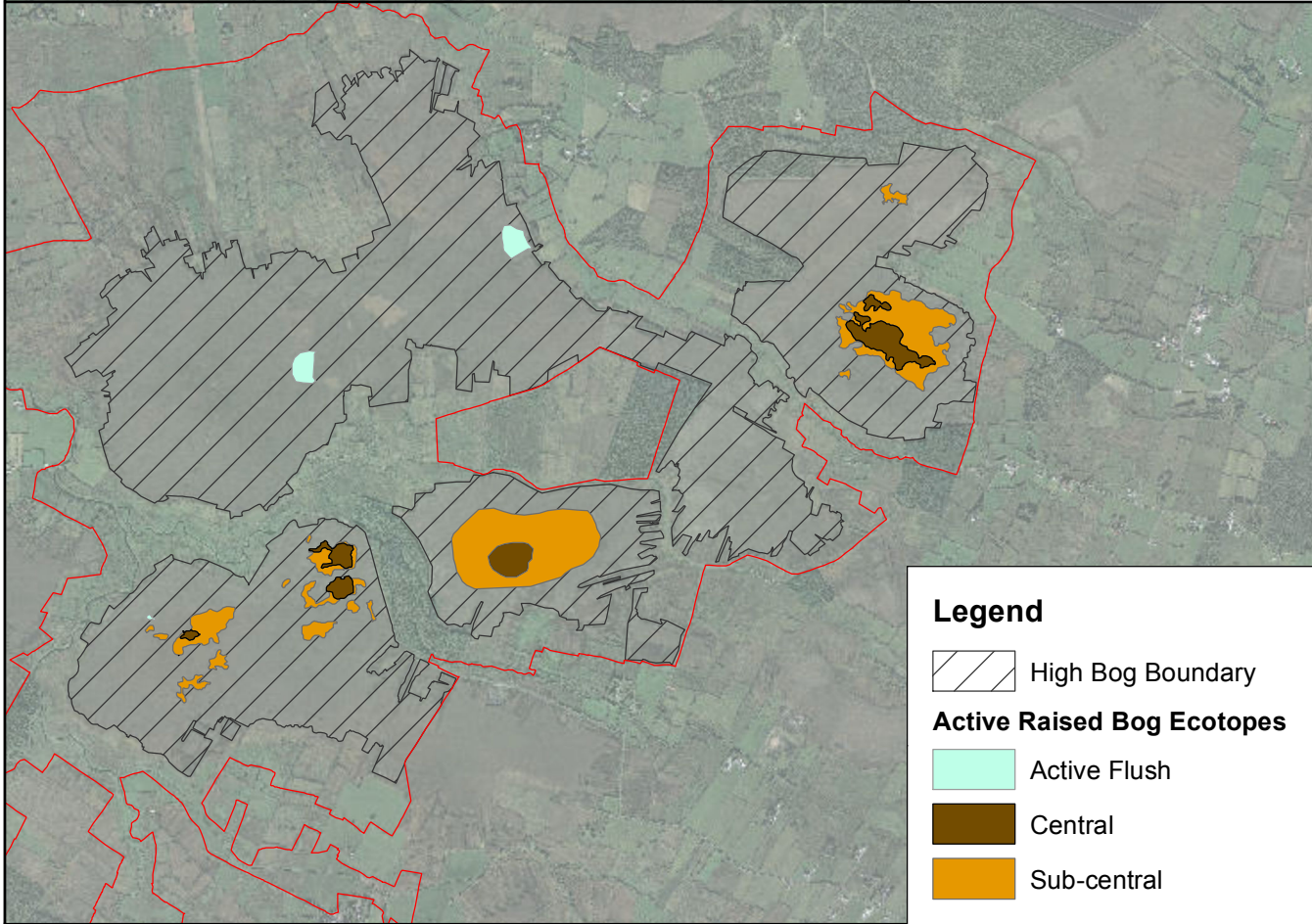
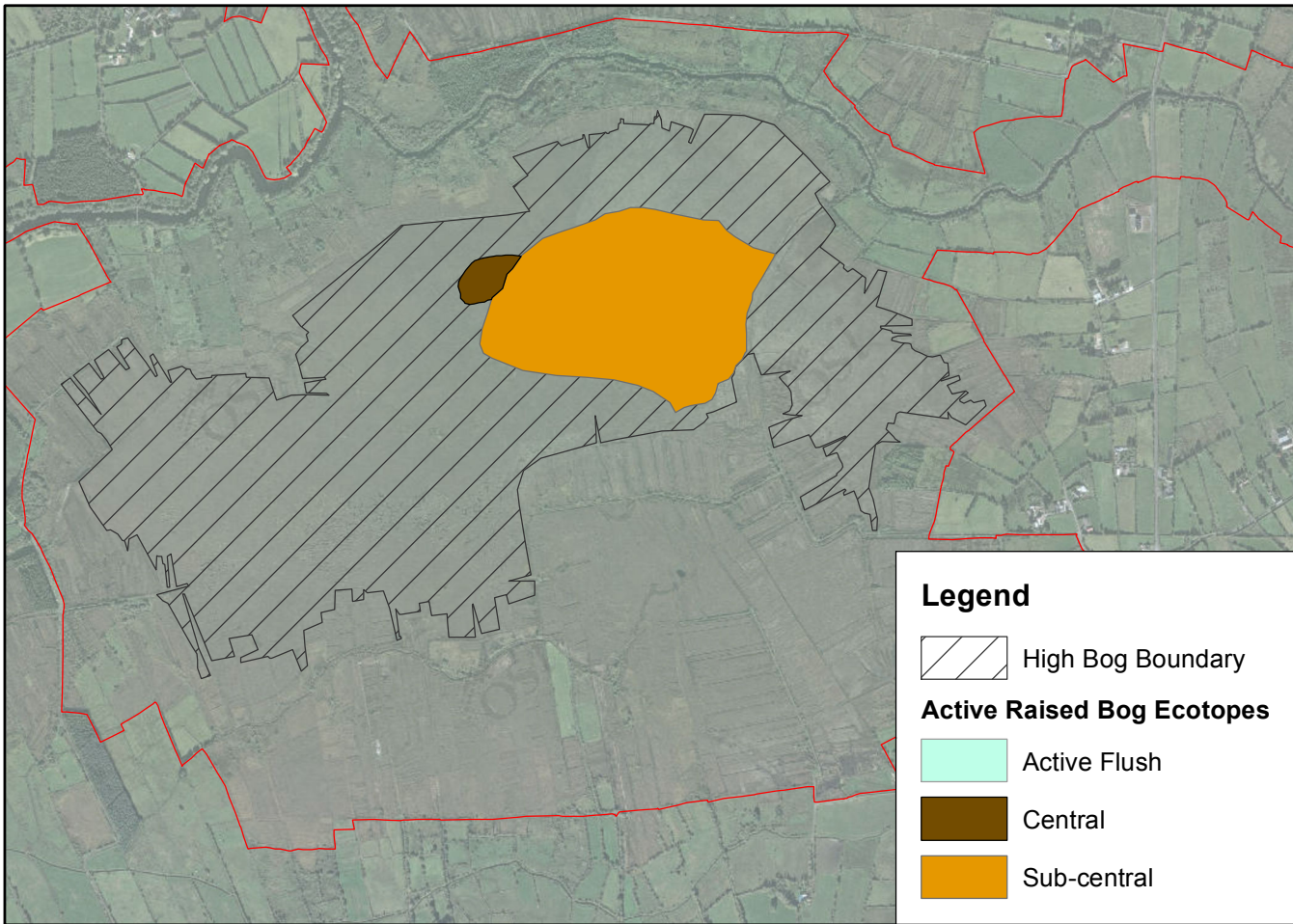
River Moy SAC 002298





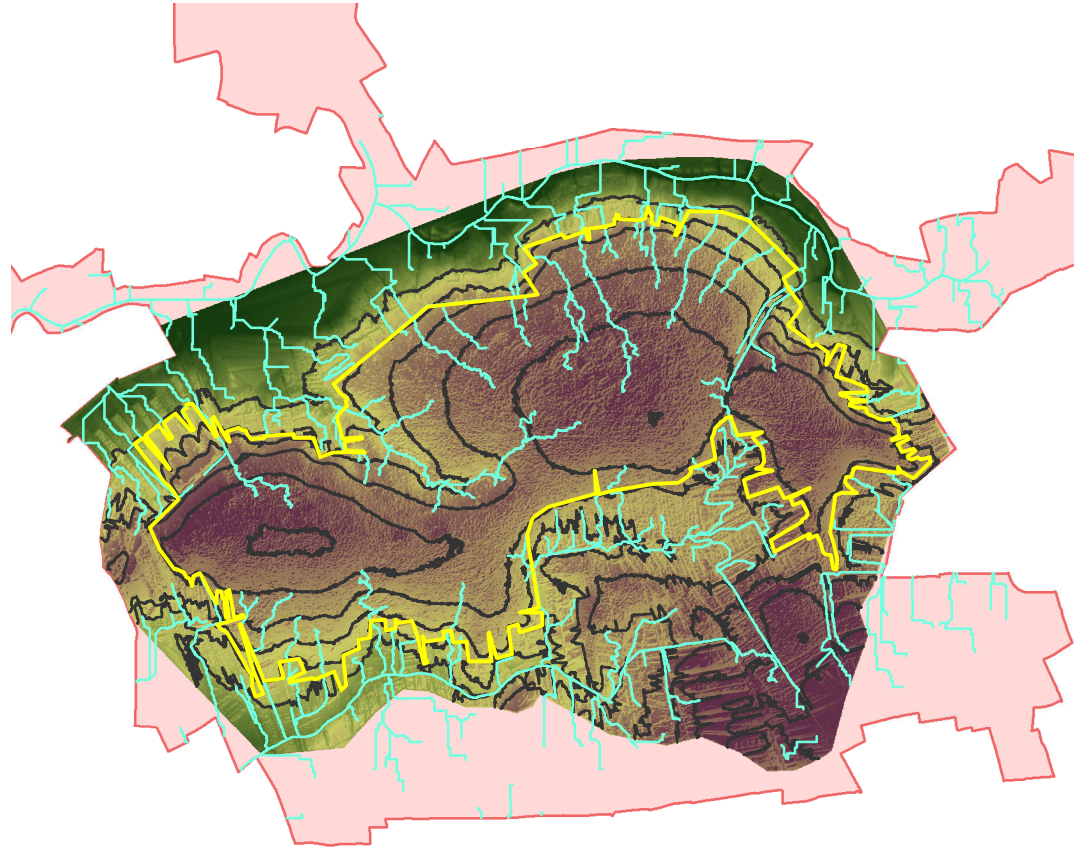











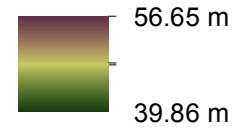
**Cloongoonagh Bog**



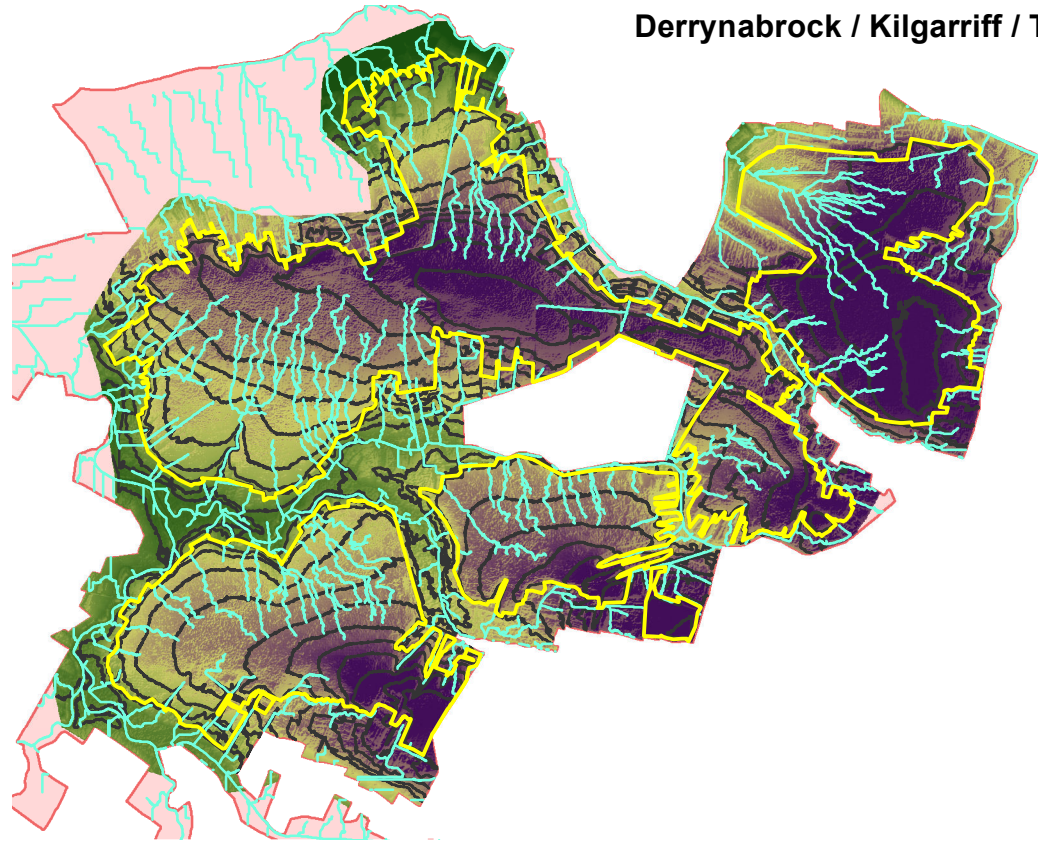
**Legend**

-  High Bog Boundary
-  Drainage Patterns
-  Contours



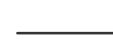
**Elevation (m)**



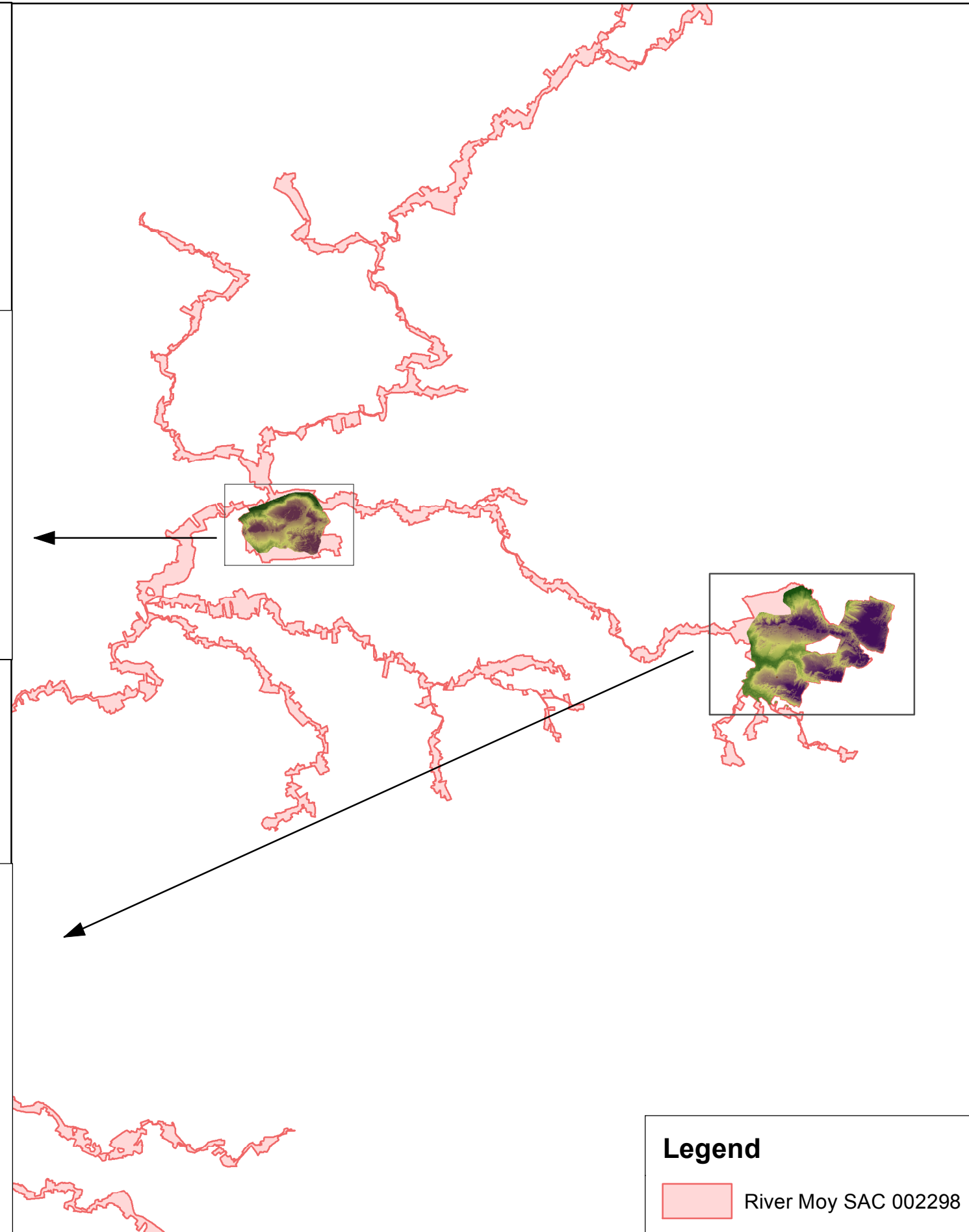
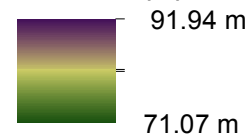
**Derrynabrock / Kilgarriff / Tawnabeg / Gowlaun Bogs**



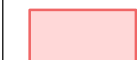
**Legend**

-  High Bog Boundary
-  Drainage Patterns
-  Contours

**Elevation (m)**



**Legend**

-  River Moy SAC 002298

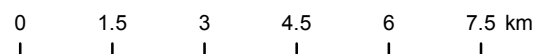


An Roinn Ealaíon, Oidhreachta,  
Gnóthaí Réigiúnacha, Tuaithe agus Gaeltachta  
Department of Arts, Heritage,  
Regional, Rural and Gaeltacht Affairs

**MAP 5:  
RIVER MOY SAC  
CONSERVATION OBJECTIVES  
ACTIVE RAISED BOG  
DIGITAL ELEVATION MODEL  
& DRAINAGE PATTERN**

Map to be read in conjunction with the NPWS Conservation Objectives Document.

**SITE CODE:  
SAC 002298; version 3.01. CO. MAYO,  
CO. SLIGO & CO. ROSCOMMON**

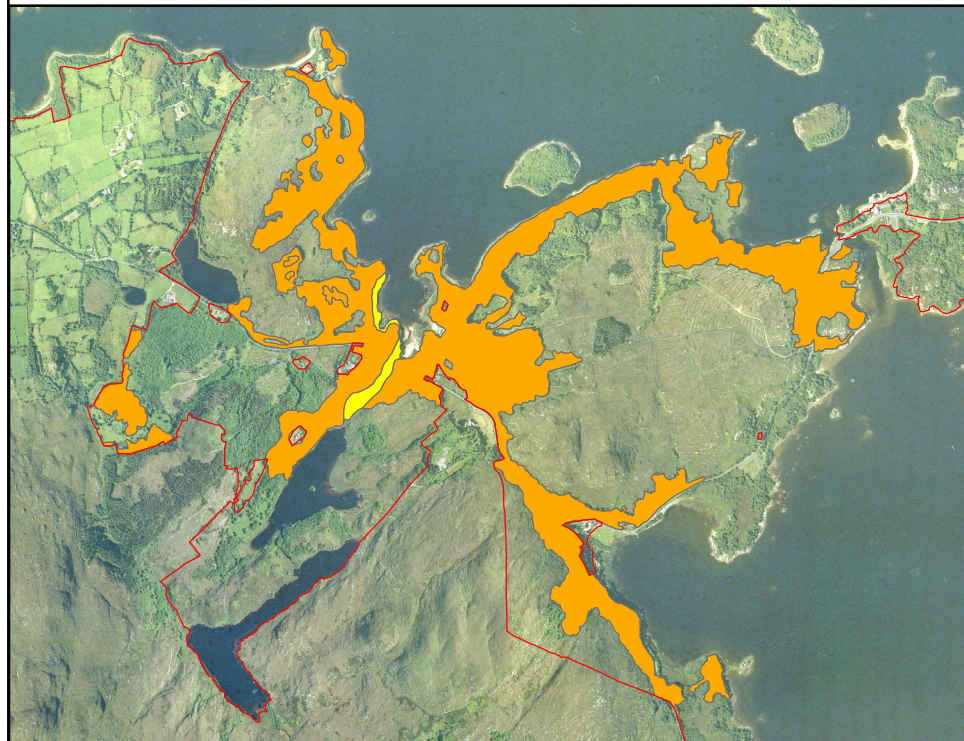
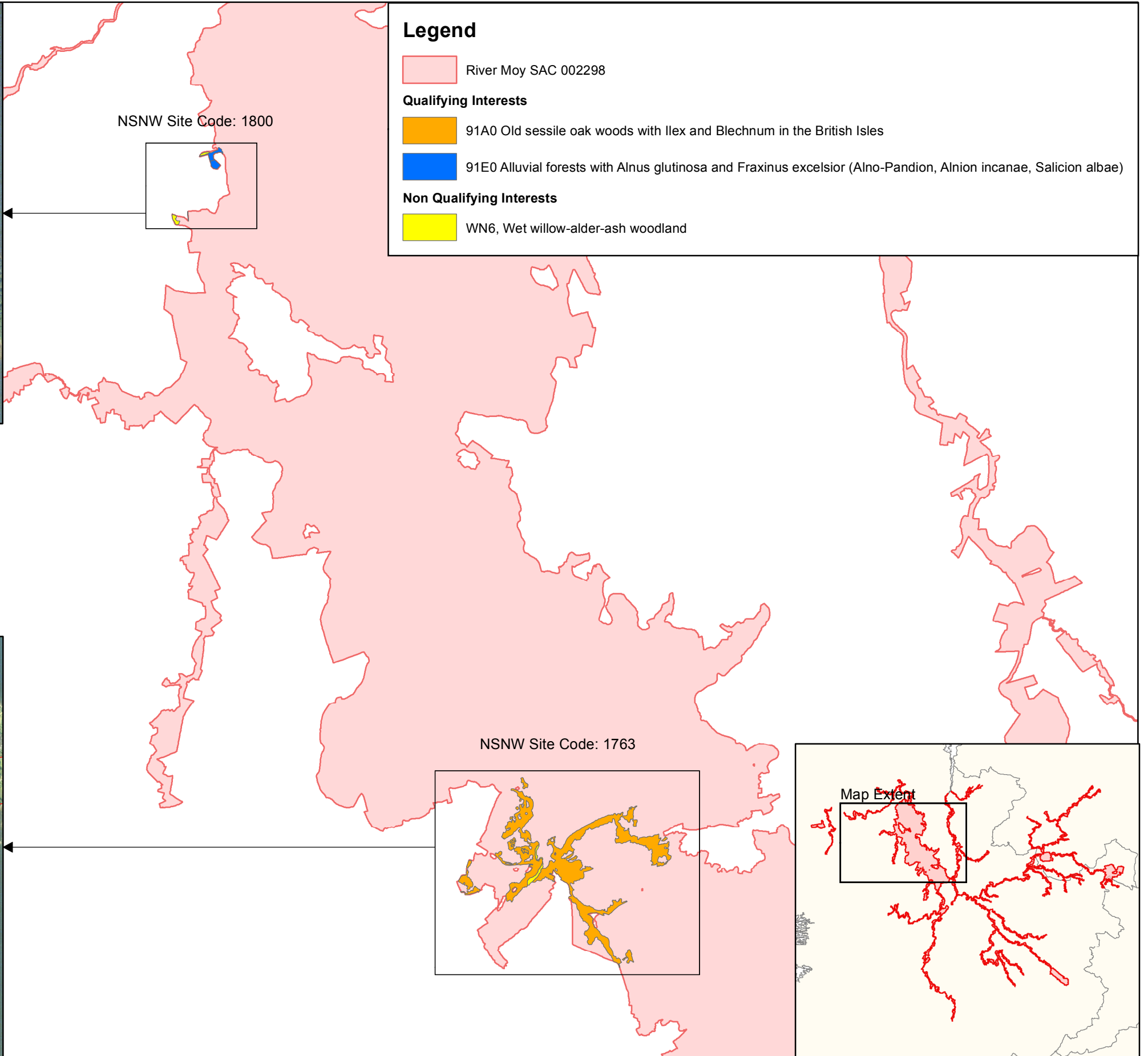


The mapped boundaries are of an indicative and general nature only. Boundaries of designated areas are subject to revision.  
Ordnance Survey of Ireland Licence No EN 0059216. © Ordnance Survey of Ireland Government of Ireland  
Níl sna teorainneacha ar na léarscáileanna ach nod garshuíomhach ginearálta. Féadfar athbheithnithe a déanamh ar theorainneacha na gceantar comharthaíthe. Suirbhéarachta Ordonáis na hÉireann Ceadúnas

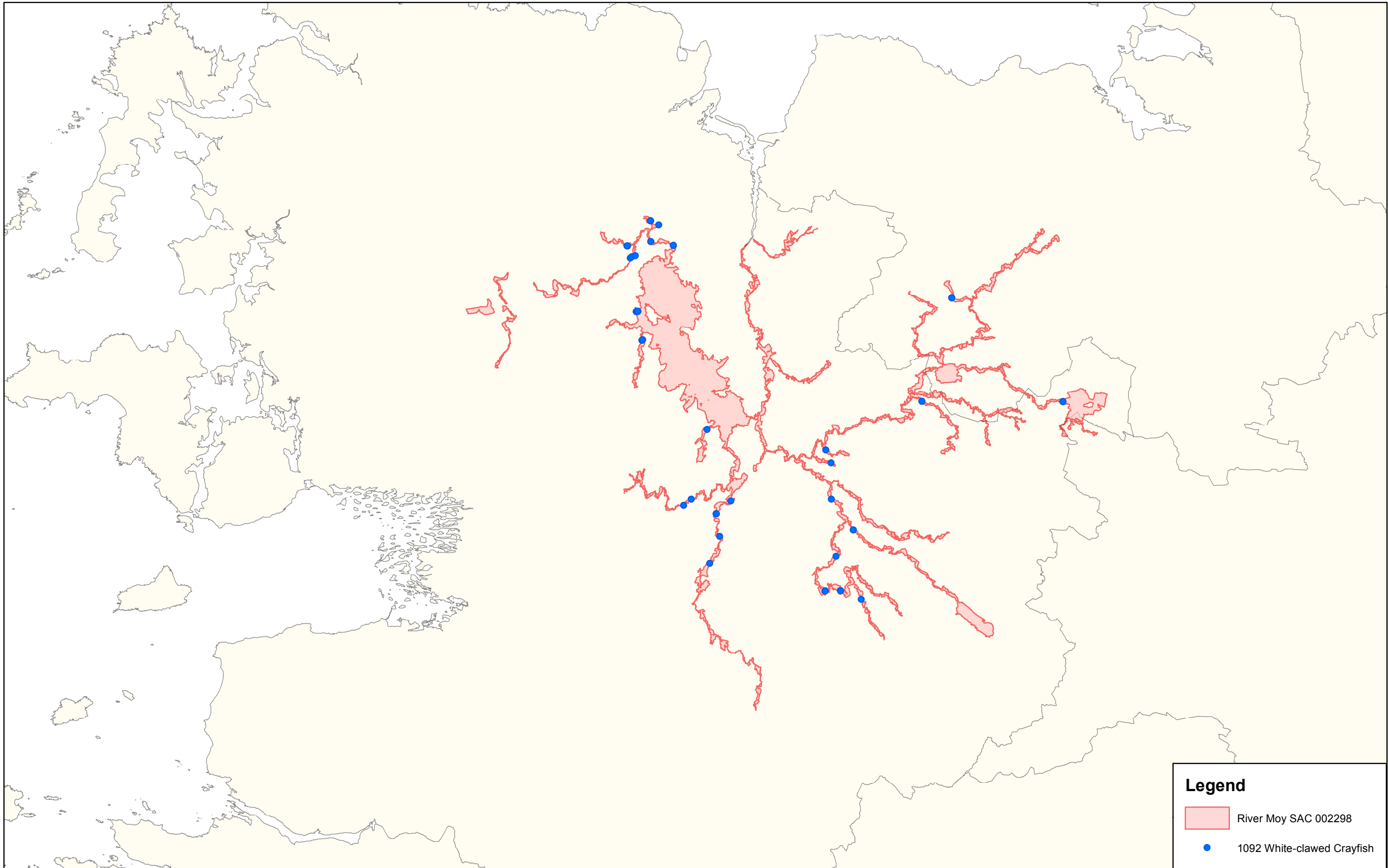


**Map Version 1  
Date: July 2016**










**Legend**

- River Moy SAC 002298
- 1092 White-clawed Crayfish

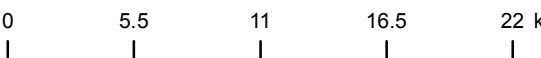


An Roinn Ealaíon, Oidhreachta,  
Gnóthaí Réigiúnacha, Tuaithe agus Gaeltachta  
Department of Arts, Heritage,  
Regional, Rural and Gaeltacht Affairs

**MAP 7:  
RIVER MOY SAC  
CONSERVATION OBJECTIVES  
WHITE-CLAWED CRAYFISH**

Map to be read in conjunction with the NPWS Conservation Objectives Document.

**SITE CODE:  
SAC 002298; version 3.01. CO. MAYO,  
CO. SLIGO & CO. ROSCOMMON**





The mapped boundaries are of an indicative and general nature only. Boundaries of designated areas are subject to revision.  
Ordnance Survey of Ireland Licence No EN 0059216. © Ordnance Survey of Ireland Government of Ireland

Níl sna teorainneacha ar na léarscáileanna ach nod garshuíomhach ginearálta. Féadfar athbheithnithe a déanamh ar theorainneacha na gceantar comharthaíthe. Suirbhéarachta Ordonáis na hÉireann Ceadúnas



**Map Version 1  
Date: July 2016**

**Legend**

-  River Moy SAC 002298
-  1355 Otter - *Lutra lutra* commuting 250m buffer

