

# National Parks and Wildlife Service

## *Conservation Objectives Series*

Lough Ennell SAC 000685



An Roinn  
Cultúir, Oidhreachta agus Gaeltachta  

---

Department of  
Culture, Heritage and the Gaeltacht



**National Parks and Wildlife Service,  
Department of Culture, Heritage and the Gaeltacht,  
7 Ely Place, Dublin 2, Ireland.  
Web: [www.npws.ie](http://www.npws.ie)  
E-mail: [nature.conservation@ahg.gov.ie](mailto:nature.conservation@ahg.gov.ie)**

**Citation:**

**NPWS (2018) Conservation Objectives: Lough Ennell SAC 000685. Version 1.  
National Parks and Wildlife Service, Department of Culture, Heritage and the  
Gaeltacht.**

**Series Editor: Rebecca Jeffrey  
ISSN 2009-4086**

## Introduction

The overall aim of the Habitats Directive is to maintain or restore the favourable conservation status of habitats and species of community interest. These habitats and species are listed in the Habitats and Birds Directives and Special Areas of Conservation and Special Protection Areas are designated to afford protection to the most vulnerable of them. These two designations are collectively known as the Natura 2000 network.

European and national legislation places a collective obligation on Ireland and its citizens to maintain habitats and species in the Natura 2000 network at favourable conservation condition. The Government and its agencies are responsible for the implementation and enforcement of regulations that will ensure the ecological integrity of these sites.

A site-specific conservation objective aims to define favourable conservation condition for a particular habitat or species at that site.

The maintenance of habitats and species within Natura 2000 sites at favourable conservation condition will contribute to the overall maintenance of favourable conservation status of those habitats and species at a national level.

Favourable conservation status of a habitat is achieved when:

- its natural range, and area it covers within that range, are stable or increasing, and
- the specific structure and functions which are necessary for its long-term maintenance exist and are likely to continue to exist for the foreseeable future, and
- the conservation status of its typical species is favourable.

The favourable conservation status of a species is achieved when:

- population dynamics data on the species concerned indicate that it is maintaining itself on a long-term basis as a viable component of its natural habitats, and
- the natural range of the species is neither being reduced nor is likely to be reduced for the foreseeable future, and
- there is, and will probably continue to be, a sufficiently large habitat to maintain its populations on a long-term basis.

### Notes/Guidelines:

1. The targets given in these conservation objectives are based on best available information at the time of writing. As more information becomes available, targets for attributes may change. These will be updated periodically, as necessary.
2. An appropriate assessment based on these conservation objectives will remain valid even if the targets are subsequently updated, providing they were the most recent objectives available when the assessment was carried out. It is essential that the date and version are included when objectives are cited.
3. Assessments cannot consider an attribute in isolation from the others listed for that habitat or species, or for other habitats and species listed for that site. A plan or project with an apparently small impact on one attribute may have a significant impact on another.
4. Please note that the maps included in this document do not necessarily show the entire extent of the habitats and species for which the site is listed. This should be borne in mind when appropriate assessments are being carried out.
5. When using these objectives, it is essential that the relevant backing/supporting documents are consulted, particularly where instructed in the targets or notes for a particular attribute.

## Qualifying Interests

*\* indicates a priority habitat under the Habitats Directive*

---

000685      Lough Ennell SAC

---

7230      Alkaline fens

**Please note that this SAC overlaps with Lough Ennell SPA (004044). See map 2. The conservation objectives for this site should be used in conjunction with those for the overlapping site as appropriate.**

## Supporting documents, relevant reports & publications

Supporting documents, NPWS reports and publications are available for download from: [www.npws.ie/Publications](http://www.npws.ie/Publications)

### NPWS Documents

<b>Year :</b>	2012
<b>Title :</b>	Ireland Red List No. 8: Bryophytes
<b>Author :</b>	Lockhart, N.; Hodgetts, N.; Holyoak, D.
<b>Series :</b>	Ireland Red List series, NPWS
<b>Year :</b>	2013
<b>Title :</b>	The status of EU protected habitats and species in Ireland. Volume 2. Habitats assessments
<b>Author :</b>	NPWS
<b>Series :</b>	Conservation assessments
<b>Year :</b>	2013
<b>Title :</b>	Conservation status assessments for three fen habitat types - 7230, 7210 and 7140
<b>Author :</b>	Kimberley, S.
<b>Series :</b>	Unpublished report to NPWS
<b>Year :</b>	2014
<b>Title :</b>	Guidelines for a national survey and conservation assessment of upland vegetation and habitats in Ireland, Version 2.0
<b>Author :</b>	Perrin, P.M.; Barron, S.J.; Roche, J.R.; O'Hanrahan, B.
<b>Series :</b>	Irish Wildlife Manual No. 79
<b>Year :</b>	2016
<b>Title :</b>	Ireland Red List No. 10: Vascular Plants
<b>Author :</b>	Wyse Jackson, M.; FitzPatrick, Ú.; Cole, E.; Jebb, M.; McFerran, D.; Sheehy Skeffington, M.; Wright, M.
<b>Series :</b>	Ireland Red Lists series, NPWS

### Other References

<b>Year :</b>	2004
<b>Title :</b>	Common Standards Monitoring guidance for lowland wetland habitats
<b>Author :</b>	JNCC
<b>Series :</b>	Joint Nature Conservation Committee, Peterborough
<b>Year :</b>	2011
<b>Title :</b>	Review and revision of empirical critical loads and dose-response relationships. Proceedings of an expert workshop, Noordwijkerhout, 23-25 June 2010
<b>Author :</b>	Bobbink, R.; Hettelingh, J.P.
<b>Series :</b>	RIVM report 680359002, Coordination Centre for Effects, National Institute for Public Health and the Environment (RIVM)

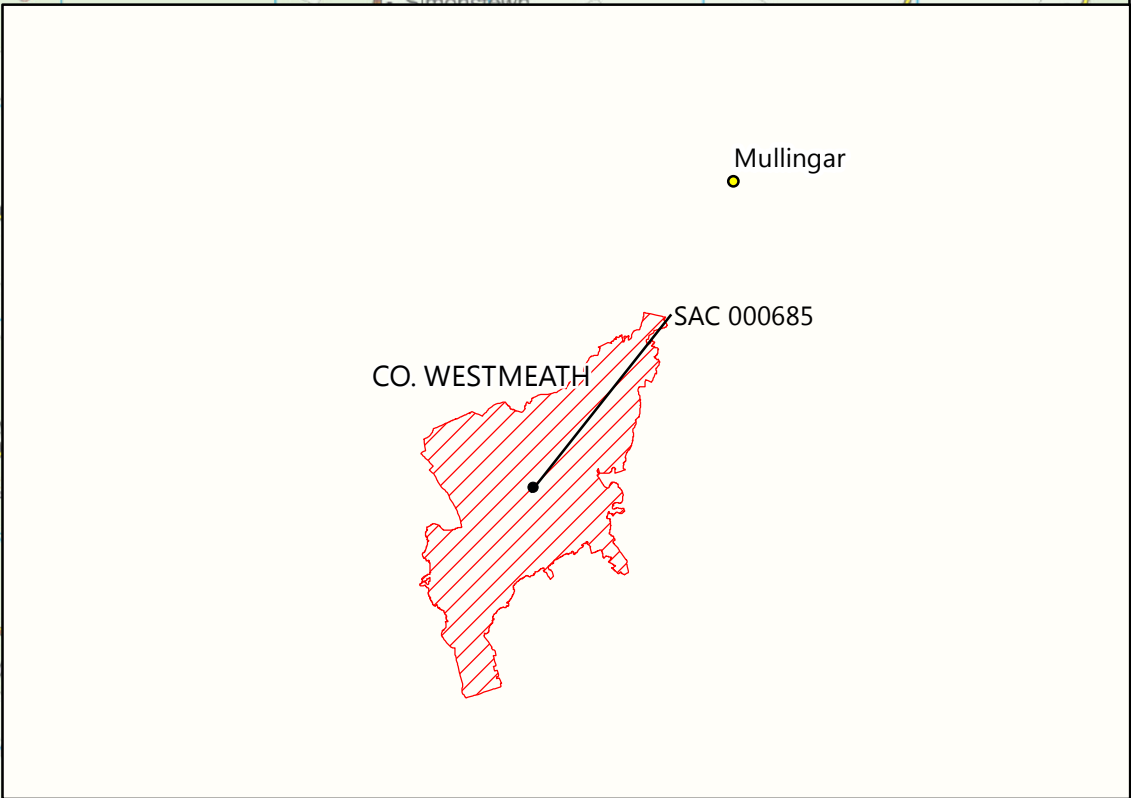
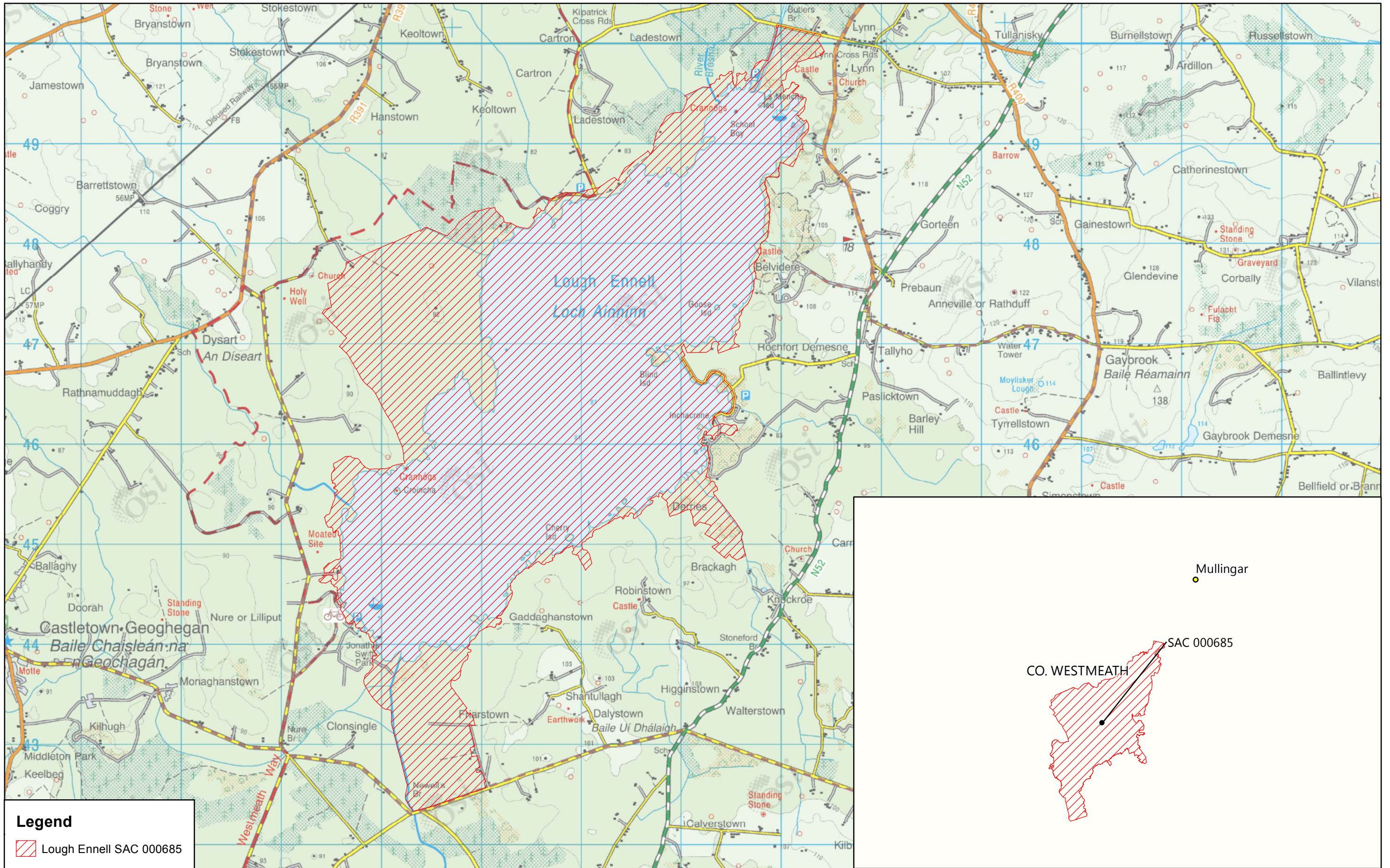
## Conservation Objectives for : Lough Ennell SAC [000685]

### 7230 Alkaline fens


To maintain the favourable conservation condition of Alkaline fens in Lough Ennell SAC, which is defined by the following list of attributes and targets:

Attribute	Measure	Target	Notes
Habitat area	Hectares	Area stable or increasing, subject to natural processes	Alkaline fen has not been mapped in detail for Lough Ennell SAC and thus the total area of the qualifying habitat in the SAC is unknown. The habitat occurs in scattered areas around the shores of Lough Ennell and grades into reed swamp, freshwater marsh and wet woodland in places. It is best developed particularly at Robinstown, Derries, on the eastern side of the lake, and at the inlets and outlets of the River Brosna (NPWS internal files)
Habitat distribution	Occurrence	No decline, subject to natural processes	See the notes for Habitat area above
Ecosystem function: soil nutrients	Soil pH and appropriate nutrient levels at a representative number of monitoring stops	Maintain soil pH and nutrient status within natural ranges	Relevant nutrients and their natural ranges are yet to be defined. However, nitrogen deposition is noted as being relevant to this habitat in NPWS (2013). See also Bobbink and Hettelingh (2011)
Ecosystem function: peat formation	Percentage cover of peat-forming vegetation and water table levels	Maintain active peat formation, where appropriate	In order for peat to form, water levels need to be slightly below or above the soil surface for c.90% of the time
Ecosystem function: hydrology - groundwater levels	Water levels (centimetres); duration of levels; hydraulic gradients	Maintain, or where necessary restore, appropriate natural hydrological regimes necessary to support the natural structure and functioning of the habitat	Fen habitats require high groundwater levels (i.e. water levels at or above the ground surface) for a large proportion of the calendar year (i.e. duration of mean groundwater level). Fen groundwater levels are controlled by regional groundwater levels in the contributing catchment area (which sustain the hydraulic gradients of the fen groundwater table). Regional abstraction of groundwater may affect fen groundwater levels
Ecosystem function: hydrology - surface water flow	Drain density and form	Maintain, or where necessary restore, as close as possible to natural or semi-natural drainage conditions	Drainage, either within or surrounding the fen habitat, can result in the drawdown of the alkaline fen groundwater table. The depth, geometry and density of drainage (hydromorphology) will indicate the scale and impact on fen hydrology. Drainage can result in loss of characteristic species and transition to drier habitats
Ecosystem function: water quality	Water chemistry measures	Maintain appropriate water quality, particularly pH and nutrient levels, to support the natural structure and functioning of the habitat	Fens receive natural levels of nutrients (e.g. iron, magnesium and calcium) from water sources. However, they are generally poor in nitrogen and phosphorus, with the latter tending to be the limiting nutrient under natural conditions. Water supply should also be relatively calcium-rich
Community diversity	Abundance of variety of vegetation communities	Maintain variety of vegetation communities, subject to natural processes	The entire diversity of alkaline fen vegetation communities within this SAC is unknown. Information on the vegetation communities associated with alkaline fens in the uplands is presented in Perrin et al. (2014)
Vegetation composition: brown mosses	Percentage cover at a representative number of 2m x 2m monitoring stops	Maintain adequate cover of typical brown moss species	Typical brown moss species include <i>Bryum pseudotriquetrum</i> , <i>Calliergonella cuspidata</i> , <i>Calliergon giganteum</i> , <i>Campylium stellatum</i> , <i>Cratoneuron filicinum</i> , <i>Ctenidium molluscum</i> , <i>Fissidens adianthoides</i> , <i>Palustriella commutata</i> , <i>Scorpidium cossonii</i> , <i>S. revolvens</i> and <i>S. scorpioides</i> . A variety of brown moss species have been recorded in the habitat in the SAC (NPWS internal files)

Vegetation composition: typical vascular plants	Percentage cover at a representative number of 2m x 2m monitoring stops	Maintain adequate cover of typical vascular plant species	For lists of typical plant species see the Article 17 conservation status assessment for alkaline fens (NPWS, 2013) and the fen habitats supporting document (Kimberley, 2013). See also Perrin et al. (2014) and JNCC (2004). In this SAC, the alkaline fen is species-rich. Species recorded include black bog-rush ( <i>Schoenus nigricans</i> ) and a diversity of other sedges (e.g. <i>Carex nigra</i> , <i>C. panicea</i> , <i>C. flacca</i> , <i>C. rostrata</i> , <i>Eriophorum angustifolium</i> ), including the Near Threatened (Wyse Jackson et al., 2016) fibrous tussock-sedge ( <i>Carex appropinquata</i> ). Also recorded were water mint ( <i>Mentha aquatica</i> ), meadowsweet ( <i>Filipendula ulmaria</i> ), pale butterwort ( <i>Pinguicula lusitanica</i> ), lousewort ( <i>Pediularis sylvatica</i> ), ragged robin ( <i>Lychnis flos-cuculi</i> ), grass-of-parnassus ( <i>Parnassia palustris</i> ), pyramidal orchid ( <i>Anacamptis pyramidalis</i> ) and early marsh-orchid ( <i>Dactylorhiza incarnata</i> ) (NPWS internal files)
Vegetation composition: native negative indicator species	Percentage cover at a representative number of 2m x 2m monitoring stops	Cover of native negative indicator species at insignificant levels	Negative indicators include species not characteristic of the habitat and species indicative of undesirable impacts such as overgrazing, undergrazing, nutrient enrichment, agricultural improvement or impacts on hydrology. Native negative indicators may include graminoids such as canary reed-grass ( <i>Phalaris arundinacea</i> ) and reed sweet-grass ( <i>Glyceria maxima</i> ), tall herbs such as great willowherb ( <i>Epilobium hirsutum</i> ), bracken ( <i>Pteridium aquilinum</i> ), bramble ( <i>Rubus fruticosus</i> ) and common nettle ( <i>Urtica dioica</i> ), and bryophytes such as <i>Brachythecium rutabulum</i> and <i>Kindbergia praelonga</i>
Vegetation composition: non-native species	Percentage cover at, and in local vicinity of, a representative number of 2m x 2m monitoring stops	Cover of non-native species less than 1%	Attribute and target based on Perrin et al. (2014). Non-native species can be invasive and have deleterious effects on native vegetation. A low target is set as non-native species can spread rapidly and are most easily dealt with when still at lower abundances
Vegetation composition: native trees and shrubs	Percentage cover in local vicinity of a representative number of monitoring stops	Cover of scattered native trees and shrubs less than 10%	Attribute and target based on Perrin et al. (2014). Scrub and trees will tend to invade if fen conditions become drier
Vegetation composition: soft rush and common reed cover	Percentage cover in local vicinity of a representative number of monitoring stops	Total cover of soft rush ( <i>Juncus effusus</i> ) and common reed ( <i>Phragmites australis</i> ) less than 10%	Attribute and target based on Perrin et al. (2014)
Vegetation structure: litter	Percentage cover in local vicinity of a representative number of monitoring stops	Total cover of litter not more than 25%	Attribute and target based on JNCC (2004). More than 25% litter cover may indicate insufficient removal of biomass by grazing and/or undesirable water table levels
Physical structure: disturbed bare ground	Percentage cover at, and in local vicinity of, a representative number of 2m x 2m monitoring stops	Cover of disturbed bare ground not more than 10%	Attribute and target based on Perrin et al. (2014). While grazing may be appropriate in this habitat, excessive areas of disturbed bare ground may develop due to unsuitable grazing regimes. Disturbance can include hoof marks, wallows, human foot prints, vehicle and machinery tracks. Excessive disturbance can result in loss of characteristic species and presage erosion for peatlands
Physical structure: tufa formations	Percentage cover in local vicinity of a representative number of monitoring stops	Disturbed proportion of vegetation cover where tufa is present is less than 1%	Attribute and target based on Perrin et al. (2014)
Indicators of local distinctiveness	Occurrence and population size	No decline in distribution or population sizes of rare, threatened or scarce species associated with the habitat; maintain features of local distinctiveness, subject to natural processes	This includes species on the Flora (Protection) Order, 2015 and/or the red data lists (Lockhart et al., 2012; Wyse Jackson et al., 2016). The Near Threatened fibrous tussock-sedge ( <i>Carex appropinquata</i> ) (Wyse Jackson et al., 2016) occurs in the habitat in the SAC (NPWS internal files)



**Legend**

 Lough Ennell SAC 000685

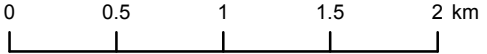


An Roinn  
Cultúir, Oidhreacht agus Gaeltachta  
Department of  
Culture, Heritage and the Gaeltacht

**MAP 1:  
LOUGH ENNELL SAC  
CONSERVATION OBJECTIVES  
SAC DESIGNATION**

Map to be read in conjunction with the NPWS Conservation Objectives Document.

**SITE CODE:  
SAC 000685; version 3. CO. WESTMEATH**



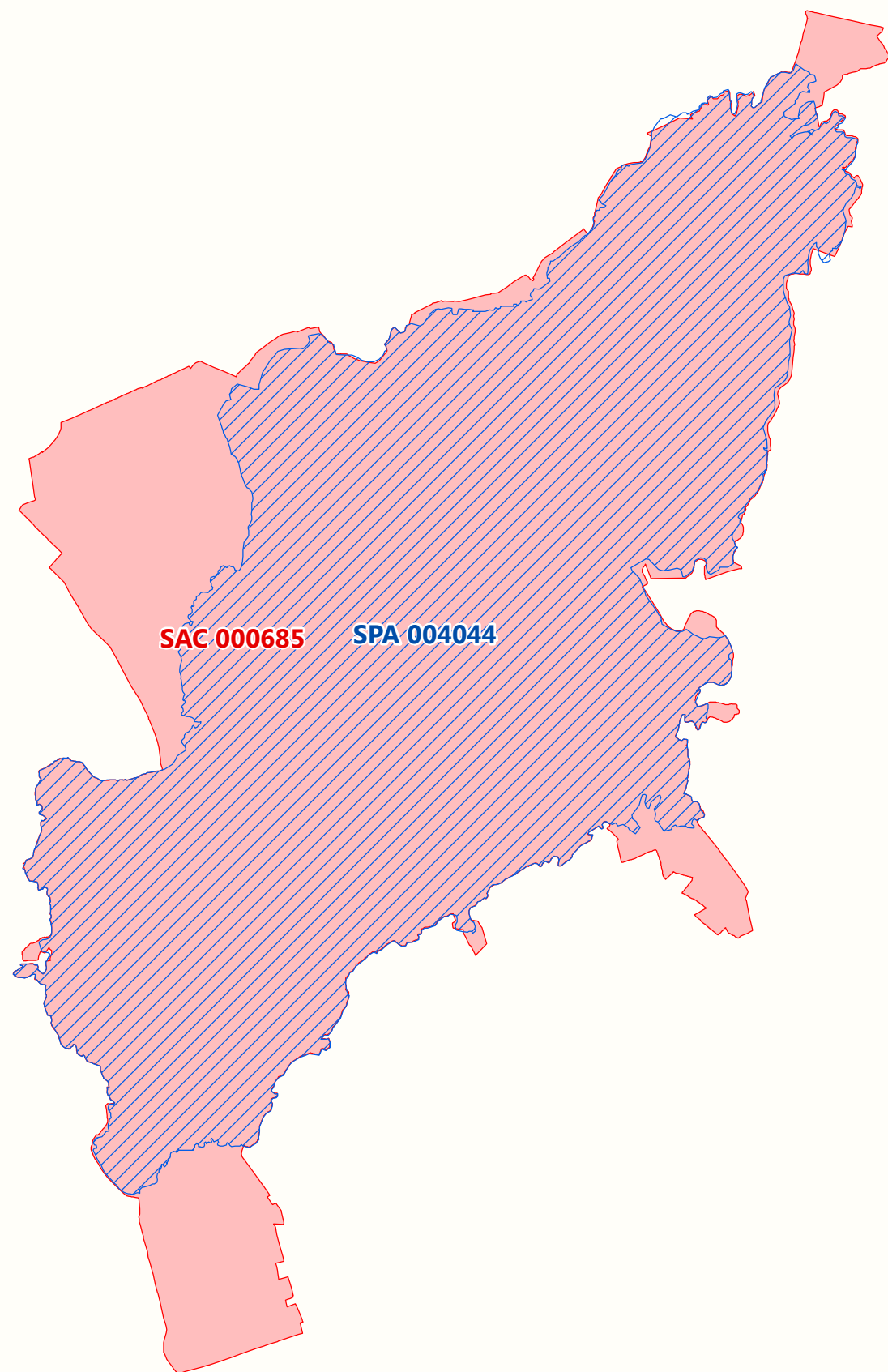
The mapped boundaries are of an indicative and general nature only. Boundaries of designated areas are subject to revision.  
Ordnance Survey of Ireland Licence No EN 0059216. © Ordnance Survey of Ireland Government of Ireland

Níl sna teorainneacha ar na léarscáileanna ach nod garshuimhach ginearálta. Féadfar athbheithnithe a déanamh ar theorainneacha na gceantar comharthaithe. Suirbhéarachta Ordonáis na hÉireann Ceadúnas Uimh EN 0059216. © Suirbhéarachta Ordonáis na hÉireann Rialtas na hÉireann



**Map Version 1  
Date: Aug 2017**





**Legend**

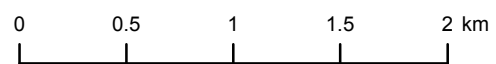
- Lough Ennell SAC 000685
- Lough Ennell SPA 004044
- OSi Discovery Series County Boundary



**MAP 2:  
LOUGH ENNELL SAC  
CONSERVATION OBJECTIVES  
OVERLAPPING DESIGNATION**

Map to be read in conjunction with the NPWS Conservation Objectives Document.

**SITE CODE:  
SAC 000685; version 3. SPA 004044; version 3.  
CO. WESTMEATH**



The mapped boundaries are of an indicative and general nature only. Boundaries of designated areas are subject to revision.  
Ordnance Survey of Ireland Licence No EN 0059216. © Ordnance Survey of Ireland Government of Ireland

Níl sna teorainneacha ar na léarscáileanna ach nod garshuíomhach ginearálta. Féadfar athbheithnithe a déanamh ar theorainneacha na gceantar comharthaithe. Suirbhéarachta Ordonáis na hÉireann Ceadúnas Uimh EN 0059216. © Suirbhéarachta Ordonáis na hÉireann Rialtas na hÉireann

