



COVID-19 cases in Ireland

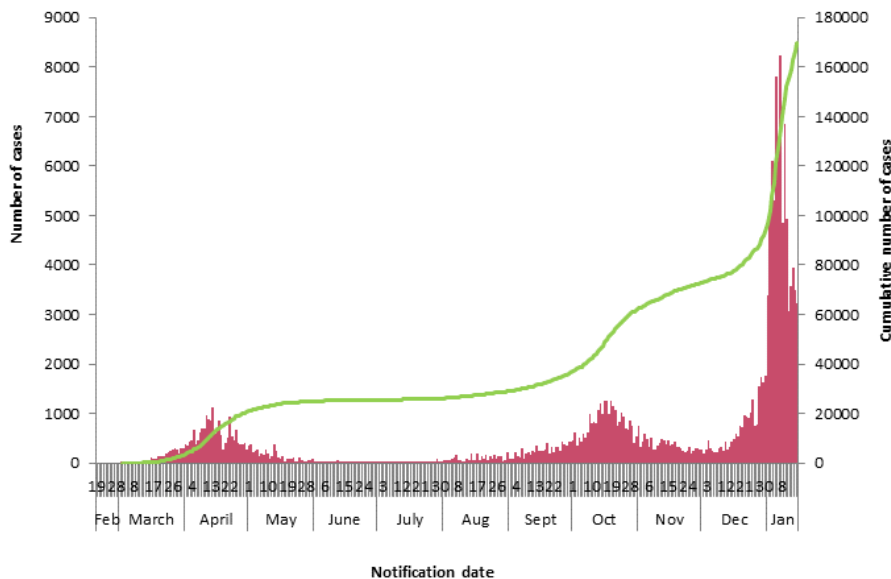
174,843 confirmed cases

2,121 cases notified in past 24 hours

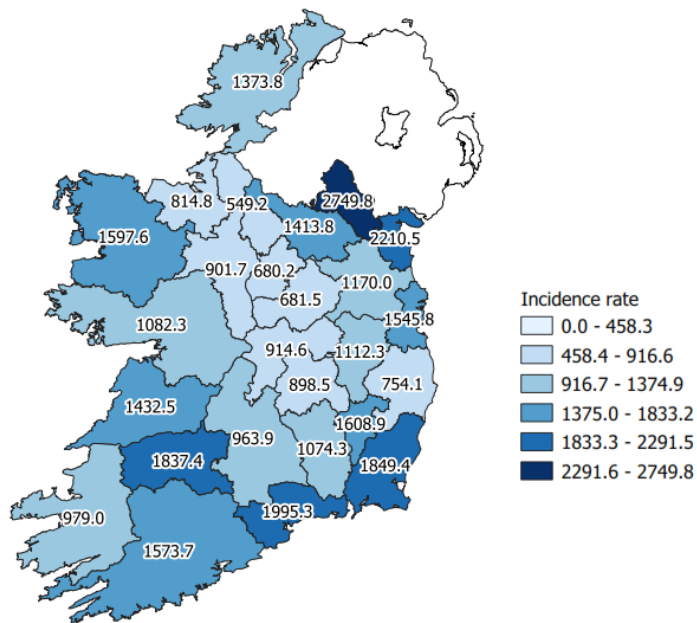
2,616 deaths
2,352 deaths were in confirmed cases

8 deaths notified in past 24 hours

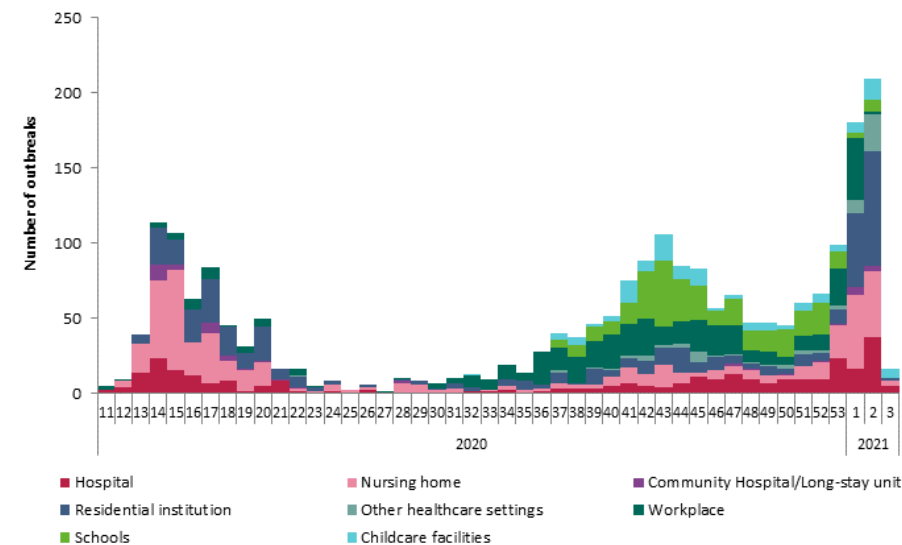
See the [weekly report](#) for detailed epidemiology describing cases notified in the past week and the [14 day report](#) for the epidemiology describing cases notified in the previous 14 days



Number and cumulative number of confirmed COVID-19 cases notified in Ireland by notification date



Cumulative incidence rates of confirmed cases of COVID-19 per 100,000 population notified in Ireland between 04/01/2021 and 17/01/2021



Trend in the number of outbreaks and clusters in healthcare, childcare/school and workplace settings by week

Note: Outbreak data for current week only reflects 1 day and there may also be a lag time in linking cases to outbreaks



Note: Data were extracted from CIDR at 09:15 on 18/01/21. Data are provisional, and subject to ongoing review, validation and update. As a result figures in this report may differ to previously published reports