



Daily update: based on notifications in the 24 hours up to midnight on 21/01/2021

# COVID-19 cases in Ireland

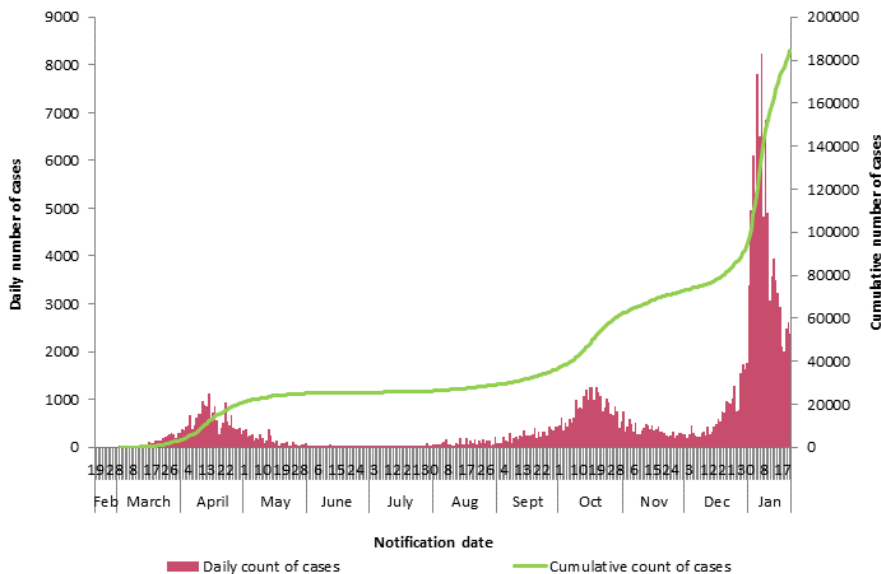
**184,279** confirmed cases

**2,371** cases notified in past 24 hours

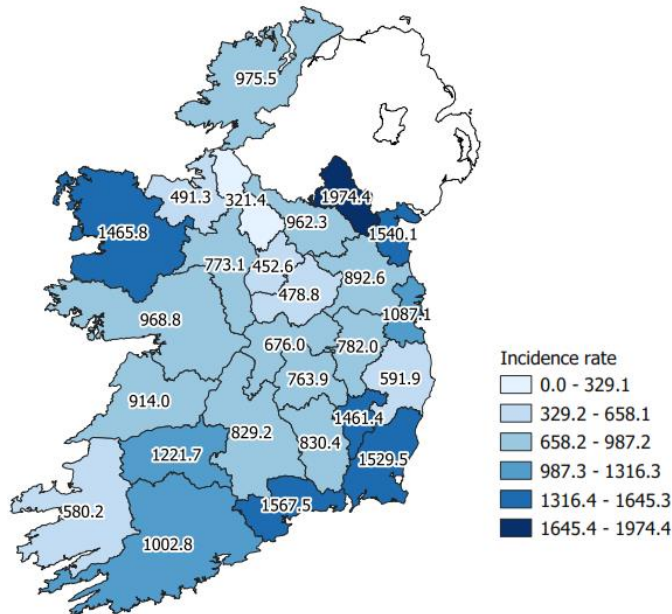
**2,870** deaths  
2,605 deaths were in confirmed cases

**52** deaths notified in past 24 hours

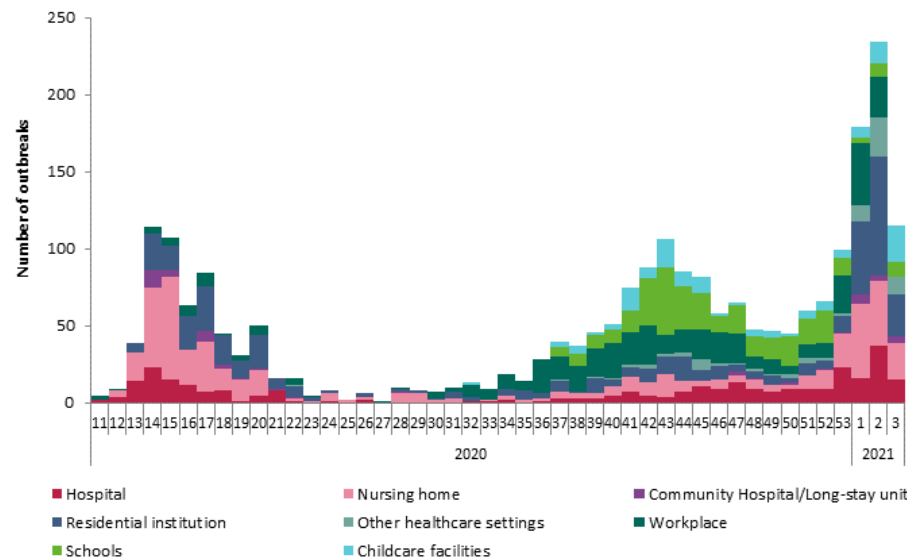
See the [weekly report](#) for detailed epidemiology describing cases notified in the past week and the [14 day report](#) for the epidemiology describing cases notified in the previous 14 days



Number and cumulative number of confirmed COVID-19 cases notified in Ireland by notification date



Cumulative incidence rates of confirmed cases of COVID-19 per 100,000 population notified in Ireland between 08/01/2021 and 21/01/2021



Trend in the number of outbreaks and clusters in healthcare, childcare/school and workplace settings by week

Note: Outbreak data for current week only reflects 5 days and there may also be a lag time in linking cases to outbreaks



Note: Data were extracted from CIDR at 09:15 on 22/01/21. Data are provisional, and subject to ongoing review, validation and update. As a result figures in this report may differ to previously published reports