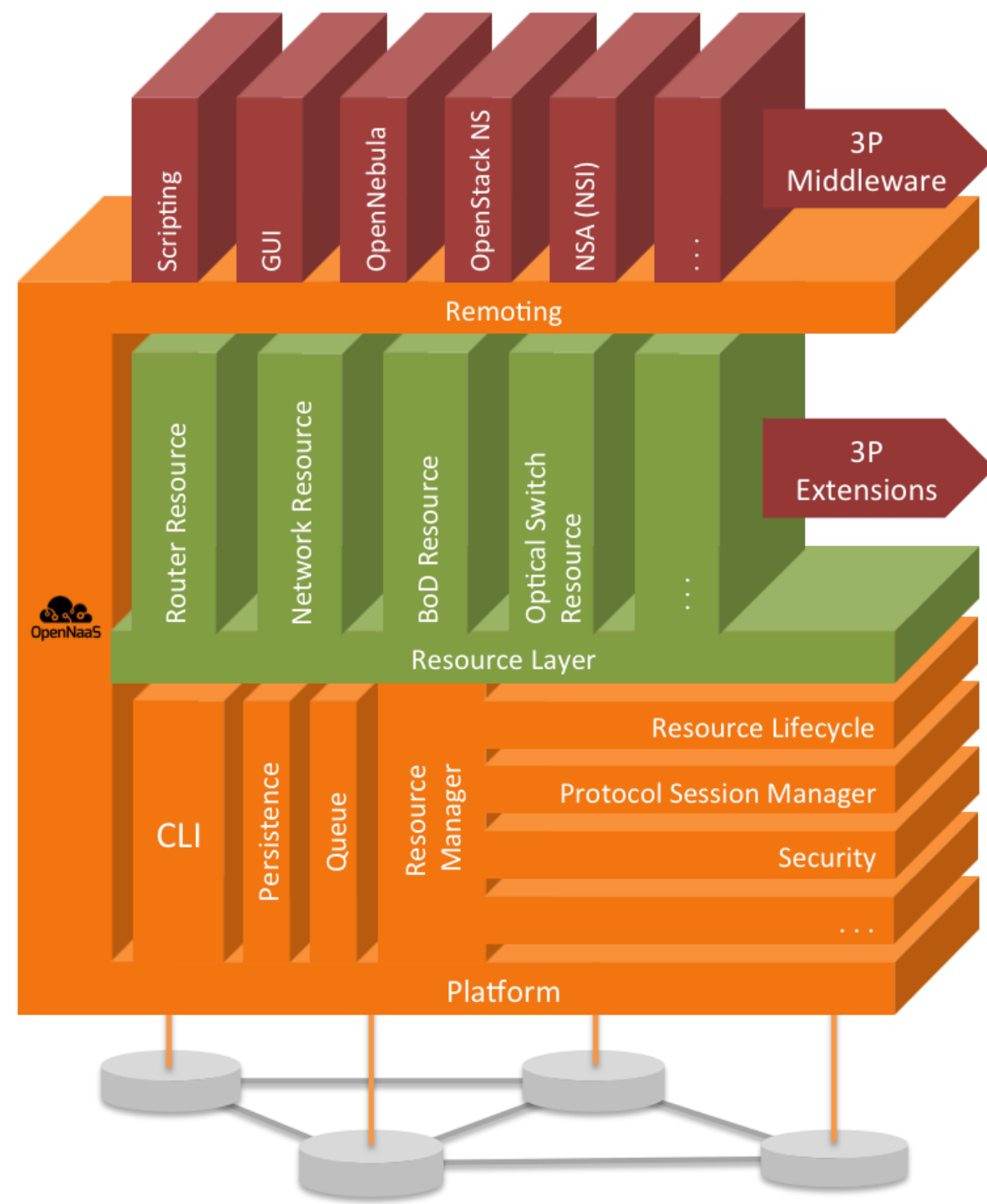




An open source system for deploying Networks as a Service



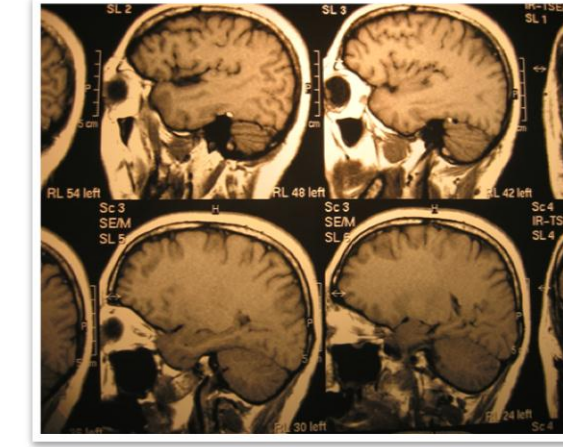
Use cases



Virtual customer premises equipment



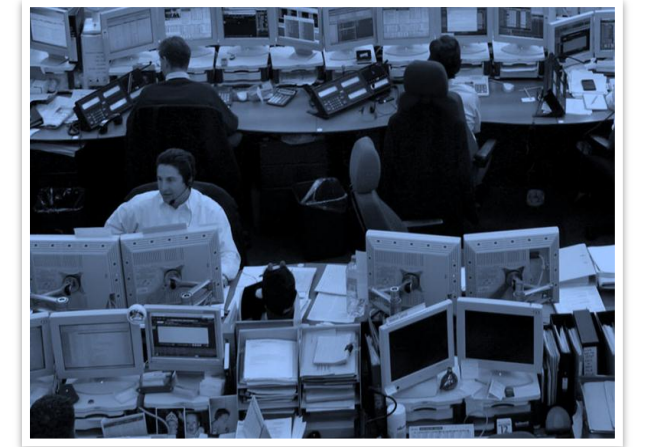
Streaming ultra-high definition multimedia and 3D



Health networking



Zero carbon-emission virtual infrastructures



Marketplace for infrastructure resources

Mantychose development is driven by the needs of real network users from universities and network providers.

OpenNaaS Architecture

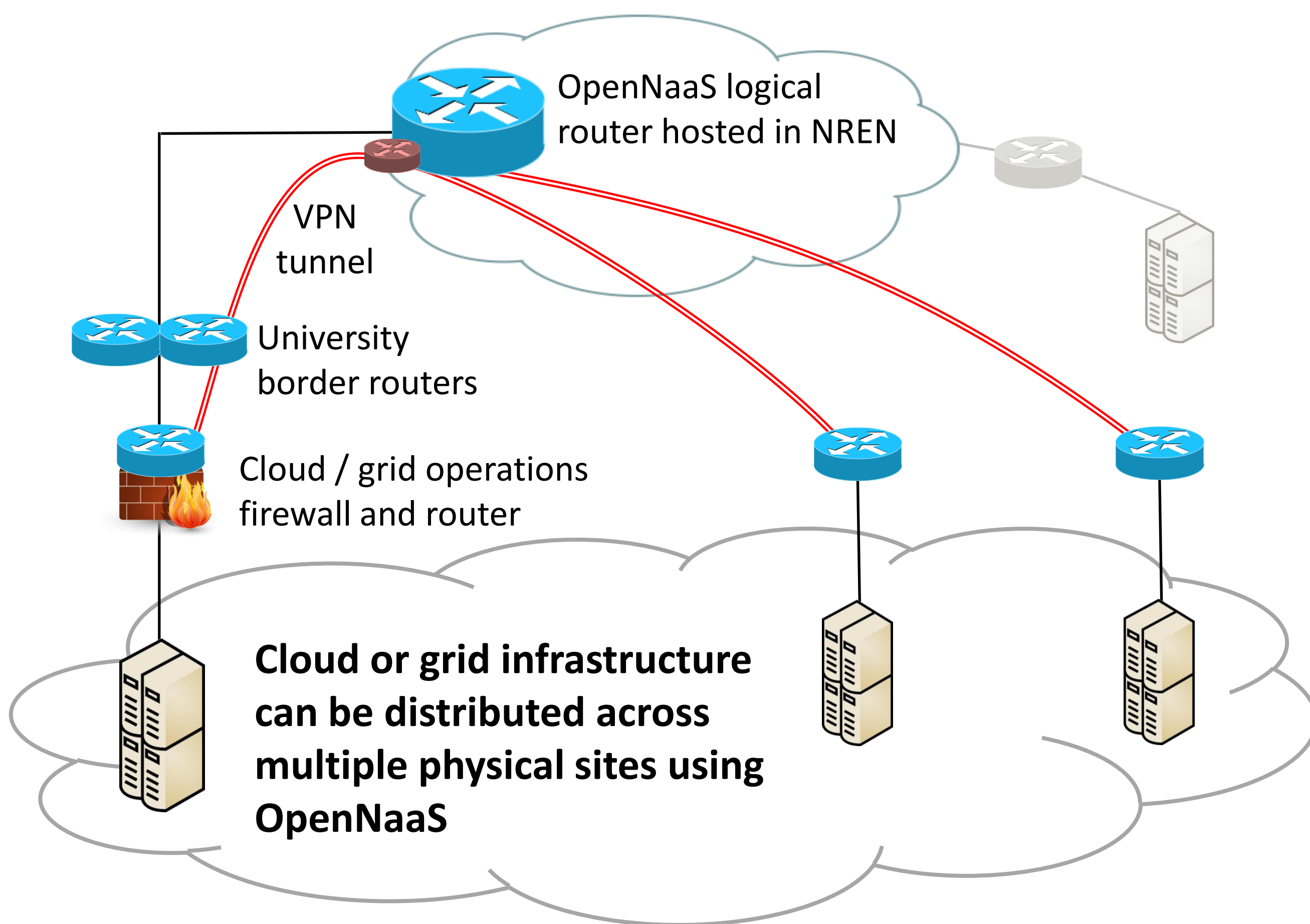
Cloud and grid computing provide important use cases for OpenNaaS



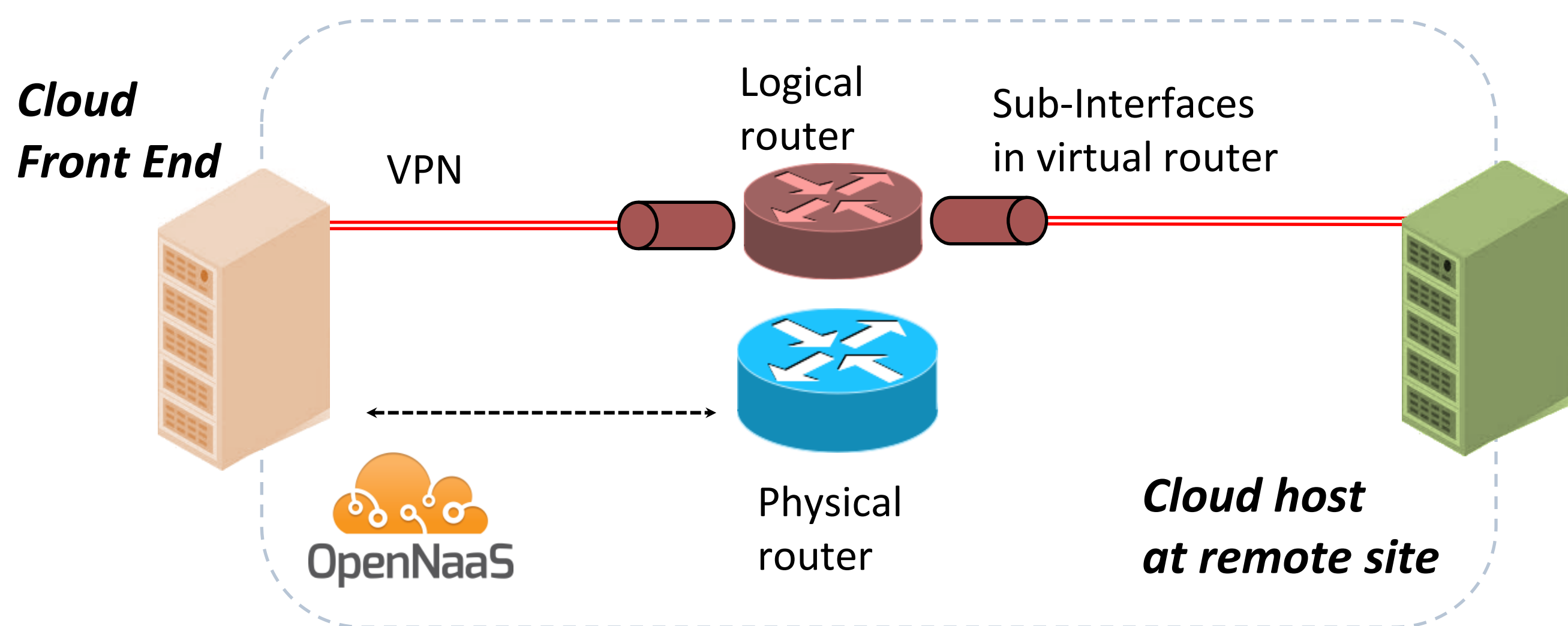
Distributed cloud site



Cloud migration



A OpenNaaS created VPN running over IP can provide a low-disruption approach to create a cloud network.

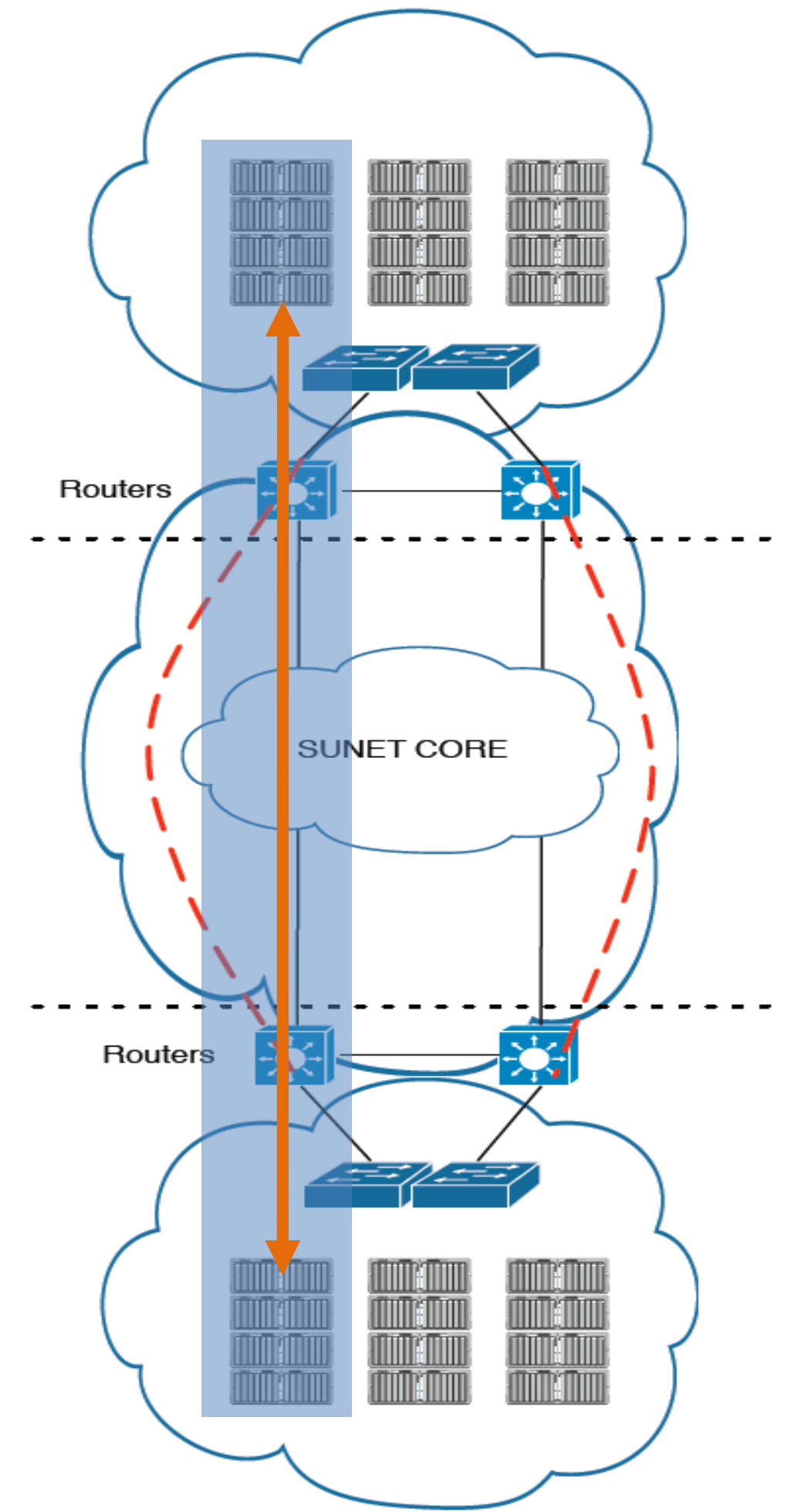


Components of an OpenNaaS Created Network

Universities and other organizations are interested in migrating services to the cloud.

The NREN provides a configurable network. A cloud computing provider – the NREN or a commercial operator – provides clouds with a configurable address space. The university campus grants partial access to OpenNaaS.

This will allow migration to the cloud without changing network addresses or updating legacy software.



Find out more at

Mantychose.eu

OpenNaaS.org

info@opennaas.org

