



Citizens **Information** Board
information · advice · advocacy

Information for School **Leavers**

citizensinformation.ie

Contents

Starting out	4
Education and training	6
Working	9
Health services	12
Claiming social welfare benefits	13
At what age can I...?	14
Further information	17

This leaflet is published by the Citizens Information Board.

The information in this leaflet is intended as a general guide only and is not a legal interpretation.

The Citizens Information Board is the national agency responsible for supporting the provision of information, advice and advocacy on social services and for the provision of the Money Advice and Budgeting Service and the National Advocacy Service for people with disabilities.

April 2019

Call **0761 07 4000**
Visit **citizensinformation.ie**

Getting more information

If you are leaving school, this leaflet is for you. It deals with some of the practical questions about education and employment that you may have at this time. It can only provide a brief overview of the options and schemes available to you.

If you see a term printed in **bold** in this leaflet, you can simply search for the term on **citizensinformation.ie** to get more information.

You can also download this leaflet at **citizensinformationboard.ie**.

You can also get information on all the topics covered in this leaflet from the network of Citizens Information Centres and from the national Citizens Information Phone Service on **0761 07 4000**.

You can follow us on Twitter
@**[citizensinfo](https://twitter.com/citizensinfo)**



Starting out

Leaving school can be an exciting time with many opportunities and possibilities ahead of you.

In this leaflet we look at some of your options for further education and training. We also briefly look at what you need to know when starting work for the first time and the supports available if you are unemployed.

Personal Public Service Number

You should check that you have a **Personal Public Service (PPS) number**. This is a unique number that you use to access public services, including social welfare, tax, education and health services. If you do not know your PPS number, contact your Intreo Centre or local Social Welfare Branch Office and the staff there can find your number for you.

Public Services Card

You need a **Public Services Card (PSC)** to access social welfare and certain other government services. For example, you need a PSC to sit the Driver Theory Test.



To get a PSC, you need to make an appointment at a **PSC Registration Centre** (Intreo offices or Social Welfare offices) to prove your identity. You can request an appointment online at **MyWelfare.ie**. Once you have your PSC, you can also create a verified **MyGovID** account. MyGovID allows you to access a range of public services online.

Renting a place to live

If you plan to live away from home, work out how much you can afford for rent. Don't forget to allow for bills like electricity and heating and to budget for food and other expenses.

Tenants have certain rights. For example, you are entitled to **minimum standards of accommodation** and a **rent book**. You also have obligations as a tenant, such as paying your rent on time and keeping the property in good order.

Threshold provides information about what you should know before you sign a lease. Its advice centres can help if you need advice about your **rights and obligations as a tenant**. See **threshold.ie** for contact details and opening hours.

Your tenancy must be registered with the Residential Tenancies Board (RTB). The RTB provides a webchat facility on its website, **rtb.ie**, where you can ask questions about your rent and tenancy.

Register to vote

Once you are 18, you can **register to vote** in all elections and referenda. Application forms are available on **checktheregister.ie** or from all local authorities, post offices and public libraries. You should return the completed form to your local authority.

Managing your money

The **Money Advice and Budgeting Service (MABS)** provides advice on planning a weekly budget. You can find useful information on the MABS website, **mabs.ie**, or you can call the MABS helpline on 0761 07 2000 to speak with an adviser.

Call **0761 07 4000**
Visit **citizensinformation.ie**

To vote
Get application
forms on
checktheregister.ie



Education and training

There are many opportunities to gain further education, skills and qualifications that can help you get a job.

You can find information on qualifax.ie about the different courses available. You can take the **interest assessment test** and find courses that fit your interests. There is a calendar of **career events** that run throughout the year.

Post Leaving Certificate (PLC) courses offer a mix of practical work, academic learning and work experience. They are a step towards skilled employment in a wide range of areas, including childcare, computing and technology, and tourism. PLC courses run throughout the country and are at Levels 5 or 6 of the **National Framework of Qualifications**. You can go on to further studies at third-level after you complete your PLC course. There is a list of colleges by region on the Education and Training Boards Ireland website: etbi.ie.

If you intend to continue to **third-level education** in Ireland, you apply through the **Central Applications Office (CAO)**. You register an account with cao.ie and complete your CAO application form online. The CAO website and handbook gives detailed information on how to apply. See cao.ie.

The **Higher Education Access Route (HEAR)** admissions scheme allocates a number of third-level places on a reduced-points basis to school leavers from socially disadvantaged backgrounds. The **Disability Access Route to Education (DARE)** offers places on a reduced-points basis to school leavers with disabilities. You apply online through the CAO for both schemes. For more information, see accesscollege.ie.



Qualifications help you get a job.

Call 0761 07 4000

Visit citizensinformation.ie

Financial support

If you are a full-time PLC student or third-level undergraduate you may qualify for a **student grant**.

The grant has two elements: a maintenance grant and a fee grant. A maintenance grant is a contribution toward your living costs. A fee grant can cover all or part of your fees, the **Student Contribution** and the cost of essential field trips.

There is an extra grant for students from disadvantaged backgrounds, which tops up the ordinary student grant. You may qualify for this if you or your parents are getting certain social welfare payments or taking part in certain programmes. If you think you may be eligible for a student grant, you should register with Student Universal Support Ireland (SUSI) online at susi.ie as soon as the application process opens in April 2019.

The **Free Fees Initiative** allows you to participate in higher education without paying tuition fees. You will still have to pay the Student Contribution. There is no separate application form for free fees. Your eligibility will be assessed on the basis of the information you give when you apply for a college place.

Tax relief on tuition fees and the Student Contribution may be available to you or to the person paying your fees.

You may get a **Back to Education Allowance** to participate in full-time education if you have been out of school for some time and you are getting a qualifying social welfare payment.

For more information on financial supports for education, see citizensinformation.ie.



Training and apprenticeships

There are **Further Education and Training (FET) courses** in a range of different areas. You may be paid an allowance, depending on your circumstances and the course.

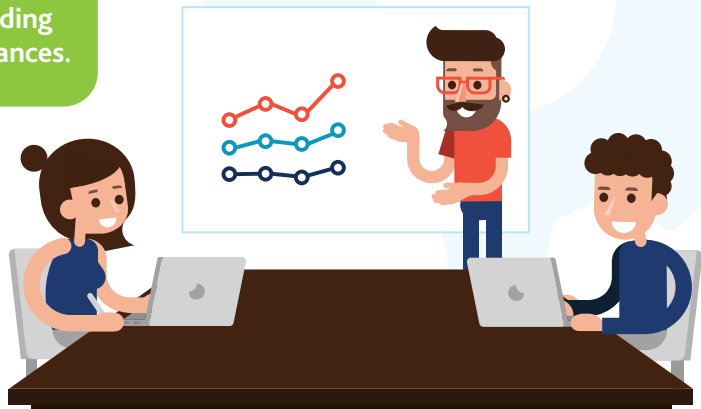
Apprenticeships provide on-the-job training with an employer. While you are training on the job for a qualification, your employer will pay you a recommended apprenticeship wage. You can find a list of apprenticeships on **apprenticeship.ie**.

You can get advice on training, apprenticeships and employment programmes from your Intreo Centre. You can also find out more on (01) 248 1398, or see **jobsireland.ie**.

The **Youthreach** programme provides education and training opportunities to people aged 15 to 20 who have left school without formal qualifications – find out more on the Youthreach website, **youthreach.ie**.

Contact your nearest Intreo office to find out about the **Youth Employment Support Scheme (YESS)**. This Scheme provides work placements to young jobseekers (aged 18-24) who are long-term unemployed, or who face barriers to employment.

You may be paid an allowance, depending on your circumstances.



Working

If you are looking for work you should register with your Intreo Centre. These offices provide information and advice for jobseekers, including a list of job vacancies and a Jobseeker Information Pack.

You can find your nearest Intreo Centre on the Department of Employment Affairs and Social Protection website, welfare.ie. The website jobsireland.ie also advertises job vacancies and allows you to post your CV online so that employers can access it.

Your rights at work

Your employer must inform you in writing of the terms and conditions of the job. When you start the job, your employer has a certain amount of time to give you this information.

If you do not get this information you should ask your employer for it. If you are **working and aged under 18** your employer must also give you a copy of the official summary of the Protection of Young Persons (Employment) Act 1996.

You have certain **rights under employment law** such as the **number of hours you can work, breaks at work, minimum wage and annual leave**. Your **contract** may provide for more than your statutory minimum entitlements but not less. If you are not getting your rights or entitlements, or if you lose your job and consider that your dismissal was unfair, you can get help to enforce your employment rights.

For more information on your employment rights visit the Employment section on citizensinformation.ie. You can also phone the Workplace Relations Commission's Information and Customer Service on (059) 917 8990, or visit workplacerelations.ie.

Call **0761 07 4000**

Visit citizensinformation.ie



Paying tax and PRSI

Your employer deducts **income tax**, the **Universal Social Charge (USC)** and **Pay Related Social Insurance (PRSI)** from your wages. These deductions should be shown on your payslip. The amount deducted depends on how much you earn and your personal circumstances. Your PRSI contributions help you to qualify for social welfare payments if you are ill or unemployed.

When you get a job, you must register the details of your new job online through Revenue's myAccount service. If you don't have a tax credit certificate when you start work, your employer must deduct tax on an emergency basis. When your tax credit certificate arrives, any **tax refund** due will be paid to you by your employer.

All workers have tax credits that reduce the amount of tax they have to pay. Other reliefs can reduce your income tax, for example, if you pay college fees or medical expenses. For more information on **tax when starting work** and **tax credits and reliefs** see [revenue.ie](https://www.revenue.ie) or [citizensinformation.ie](https://www.citizensinformation.ie).

At the end of the tax year you can request an end of year statement through Revenue's myAccount service. This statement shows how much you earned, along with the tax, USC and PRSI you paid.

If you are ill

You must tell your employer if you get sick and cannot go to work. Your employer may or may not pay you when you are out sick. If you are on **sick leave** you should apply for **Illness Benefit** – your GP (family doctor) should have the application form. If you are not entitled to Illness Benefit you should still send medical certificates to the Department of Employment Affairs and Social Protection because you may be entitled to **PRSI credits**. Credits are PRSI contributions which you do not have to pay for that keep your social insurance record up to date. For more information on illness benefit see the **Social welfare payments** section on [citizensinformation.ie](https://www.citizensinformation.ie).

Injury at work

There are special social welfare provisions, called **Occupational Injuries Benefits (OIB)**, for workers who are injured at work or on the way to or from work.

If you are injured at work or travelling to or from work, you should tell your employer immediately and apply for a *declaration of accident at work* using Form IB/OB1 which is available from the Department of Employment Affairs and Social Protection.

If you are on sick leave from work you should apply for **Illness Benefit**.



Call **0761 07 4000**

Visit **citizensinformation.ie**

Health services

If your income is below a certain amount, you may be eligible for a **medical card**. A medical card entitles you to medical care free of charge. Even if you are not eligible for a medical card, you may qualify for a **GP visit card**. A GP visit card doesn't provide the same range of services as a medical card but does allow you to visit your GP for free.

If you are aged 16 to 25 and you are dependent on your parents, you are eligible for a medical card if your parents have a means-tested medical card. If you are financially independent from your parents, you may be entitled to a medical card or GP visit card if your income is under the limit.

You can apply online for a medical card or GP visit card on **medicalcard.ie** or get an application form from your Local Health Office. For details of your Local Health Office call the Health Service Executive (HSE) information line on (041) 685 0300 or see the website **hse.ie**.

For other health services, including information about **mental health**, **unplanned pregnancy** and **hospital services**, contact the HSE. You can use the webchat facility HSELive on **hse.ie**. Your GP can also advise you and can refer you to available supports and services.



Claiming social welfare benefits

You may qualify for a jobseeker's social welfare payment, either Jobseeker's Benefit or Jobseeker's Allowance, if you are aged over 18, unemployed and looking for work.

You apply for a jobseeker's payment at your Intreo Centre or local Social Welfare Branch Office. This is also known as **signing on**. You can apply online at **welfare.ie**. You can also download application forms for jobseeker's payments from **MyWelfare.ie**.

To qualify for **Jobseeker's Benefit** you must have paid PRSI contributions for at least two years. **Jobseeker's Allowance** is a means-tested payment and you do not need to have paid PRSI to qualify.

If you have just left school and are looking for a job, you cannot get Jobseeker's Allowance until three months after you have finished school and exams. If your parents are getting a social welfare payment, they can continue to get an **Increase for a Qualified Child** for you for these three months.

If you are aged over 18 and in financial difficulty, you can apply for a basic weekly **Supplementary Welfare Allowance**.

You can get a list of offices that administer the supplementary Welfare Allowance scheme on **welfare.ie** or contact your Intreo Centre or local Social Welfare Branch Office.

Call **0761 07 4000**

Visit **citizensinformation.ie**



At what age can I...?

Leave school

Age 16 or when you finish three years of post-primary education, whichever is the later

Leave home

Age 16 – with parental consent

Age 18 – without parental consent

Get a job

Age 14 – up to seven hours per day (35 hours per week) during school holidays

Age 15 – up to eight hours per week during term-time and up to seven hours per day (35 hours per week) during school holidays

Age 16 – up to eight hours per day and 40 hours per week

Drive on the public road

Age 16 – motorbike up to 11kW and up to 125cc, moped with a maximum speed of 45kph, work vehicle such as a tractor or JCB

Age 17 – car and other vehicles with seats for up to eight passengers and maximum weight of 3,500 kg

Age 18 – motorbike up to 35kW, goods vehicles up to 7,500 kg

Age 21 – buses with seats for up to 16 passengers

Buy alcohol

Age 18 – if you are aged under 18, you cannot buy alcohol and must be accompanied by a parent on a licensed premises and may only remain on the premises up to 9pm (10pm from May to September). If aged 15 to 17, you can stay later when attending a private function at which a substantial meal is being served.



Drink alcohol

Age 18 – if you are aged under 18, you can drink alcohol in a private residence if you have parental consent

Buy cigarettes

Age 18

Be charged with a criminal offence

Age 10 – for murder, manslaughter, rape and aggravated sexual assault

Age 12 – for other criminal offences

Consent to medical treatment

Age 16

Give blood

Age 18

Consent to having sex

Age 17

Access abortion services

Age 16 and over - you can choose not to involve your parents and a doctor can offer you an abortion if they think you can understand the information and give consent

Under 16 - you cannot access abortion services without the consent of a parent or guardian

Marry

Age 18

Apply for a 10-year passport

Age 18 – if you are younger you can only apply for a five-year passport

Book a holiday or flight

Age 18

Call 0761 07 4000

Visit citizensinformation.ie

Apply for a National Age Card

Age 18

Register to vote

Age 18 for all elections and referenda

Stand for elections

Age 18 – local elections

Age 21 – national and European elections

Age 35 – presidential election

Apply for a gender recognition certificate

Age 16 – parents can apply on your behalf if you have a Court Exemption Order

Age 18 – without parental assistance

Sit on a jury in court

Age 18

Enter a legally binding contract

Age 18 – except for certain contracts such as for necessities (for example, food) or apprenticeships

Make a will

Age 18



Call 0761 07 4000

Visit [citizensinformation.ie](https://www.citizensinformation.ie)

Further information

Citizens Information
citizensinformation.ie

Citizens Information Phone Service

Call: 0761 07 4000
Monday to Friday, 9am – 8pm

Citizens Information Centres

Visit **centres.**
citizensinformation.ie to find your nearest centre.

Department of Employment Affairs and Social Protection

Information Section
Call: (071) 919 3302
welfare.ie

Gov.ie – Brexit and you

Government website with key information and regular updates about Brexit.

gov.ie/brexit or @BrexitReadyIRL

Health Service Executive

Information on mental health services and supports
Call: (041) 685 0300
yourmentalhealth.ie

Jigsaw

National Centre for Youth Mental Health
Find your nearest service on
jigsaw.ie

Jobs Ireland

Call: (01) 248 1398
jobsireland.ie

My Options helpline and counselling service

Information and support on all your options if you have an unplanned pregnancy.
Call: 1800 828 010 or (01) 687 7044

MyOptions.ie

Residential Tenancies Board

Call: (01) 702 8100
rtb.ie

Road Safety Authority

Information on getting a driving licence.
rsa.ie

Spunout

Information and support for young people.

spunout.ie

Threshold

Accommodation advice centres in Dublin, Cork and Galway.

threshold.ie

Workplace Relations Commission

Information and Customer Service
Call: (059) 917 8990
workplacelrelations.ie

Youth Information Centres

Find your nearest centre on
dcya.gov.ie

The Citizens Information Board provides independent information, advice and advocacy on public and social services through **citizensinformation.ie**, the Citizens Information Phone Service and the network of Citizens Information Services. It is responsible for the Money Advice and Budgeting Service and provides the National Advocacy Service for people with disabilities.

Citizens Information



citizensinformation.ie



0761 07 4000 - Mon to Fri, 9am - 8pm



Drop in - 215 locations nationwide

Citizens Information Board Head Office
Ground Floor, George's Quay House, 43 Townsend St, Dublin 2
t: 0761 07 9000. e: info@ciboard.ie

citizensinformationboard.ie