



Weekly Report on the Epidemiology of COVID-19 in Ireland

Week 12, 2021

Health Protection Surveillance Centre, HPSC

COVID-19 Epidemiology Team, 29/03/2021

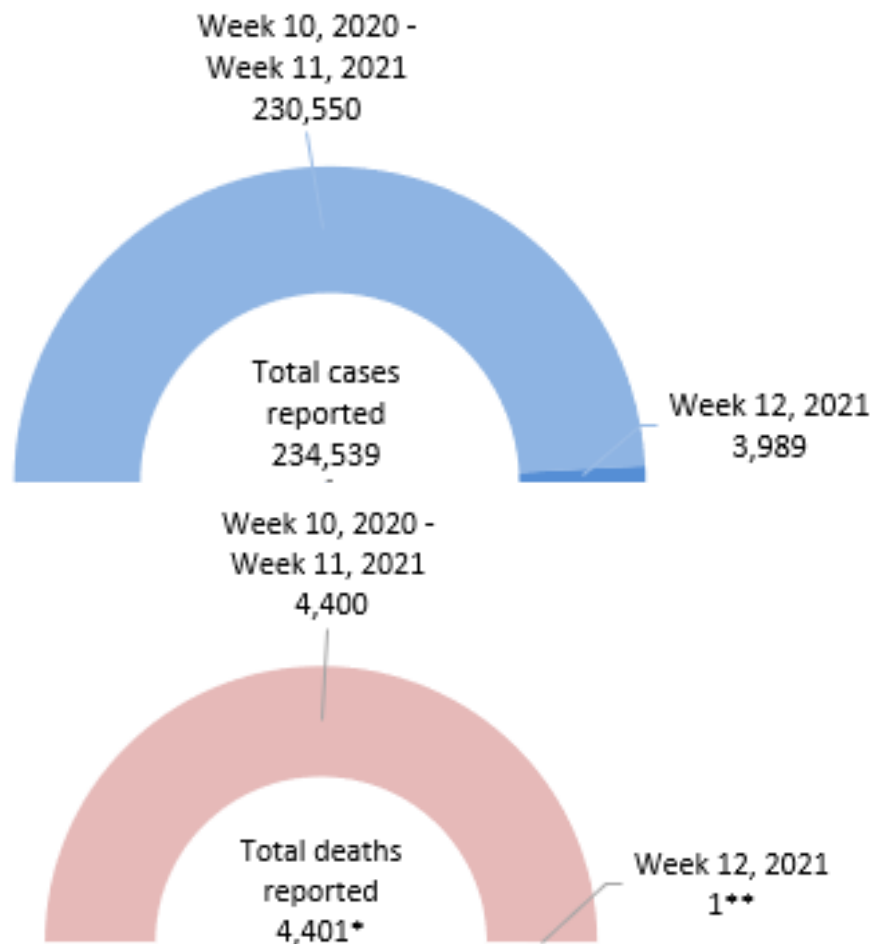
Dates to note:

- **Week 12 2021 (21st to 27th March 2021)**
- **Week 48 2020 (22nd to 28th November 2020)**
- **Week 10 2020 (1st to 7th March 2020) – The beginning of the pandemic in Ireland**

Note: The epidemiological weeks in this report, run from Sunday to Saturday, please refer to appendix 1 for a complete list of epidemiological weeks with start and end dates.

Note: Data were extracted from Computerised Infectious Disease Reporting (CIDR) system on 29/03/2021 and are provisional and subject to ongoing review, validation and update. As a result, figures in this report may differ from previously published figures.

Summary characteristics of COVID-19 cases notified in Ireland



	Total (week 10, 2020 - week 12, 2021)		Week 12, 2021	
	Number	Percent	Number	Percent
Total number of confirmed cases	234,539		3,989	
Incidence rate of confirmed cases per 100,000 population	4925.4		83.8	
Number of cases hospitalised	13,501	5.8	140***	3.5
Number of cases admitted to ICU	1,412	0.6	2***	0.1
Number of deaths among confirmed cases	4,401	1.9	1	0.0
Case fatality ratio (CFR %)	1.88		0.03	
Incidence rate of confirmed deaths per 100,000 population	92.42		0.02	
Number of cases associated with clusters	71,792	30.6	736	18.5
Number of imported cases	1384	0.6	15	0.4
Number of cases in healthcare workers	28,048	12.0	96	2.4
Males	111,696	47.6	1,976	49.5
Females	122,756	52.3	2,012	50.4
M:F ratio	0.91		0.98	
Median (years)	38		31	
Mean age (years)	40		31	
Age range (years)	0 - 108		0 - 95	

***The number of cases who were hospitalised and the number of cases who were admitted to ICU relate only to cases who were notified and admitted to hospital or ICU in week 12, 2021. It does not include cases who were notified prior to week 12, 2021 and who were admitted to hospital or ICU in week 12, 2021.

* Total deaths reported include deaths from confirmed cases only

**The number of deaths relate only to cases who were notified and who died in week 12, 2021. It does not include cases who were notified prior to week 12, 2021 and who died in week 12, 2021

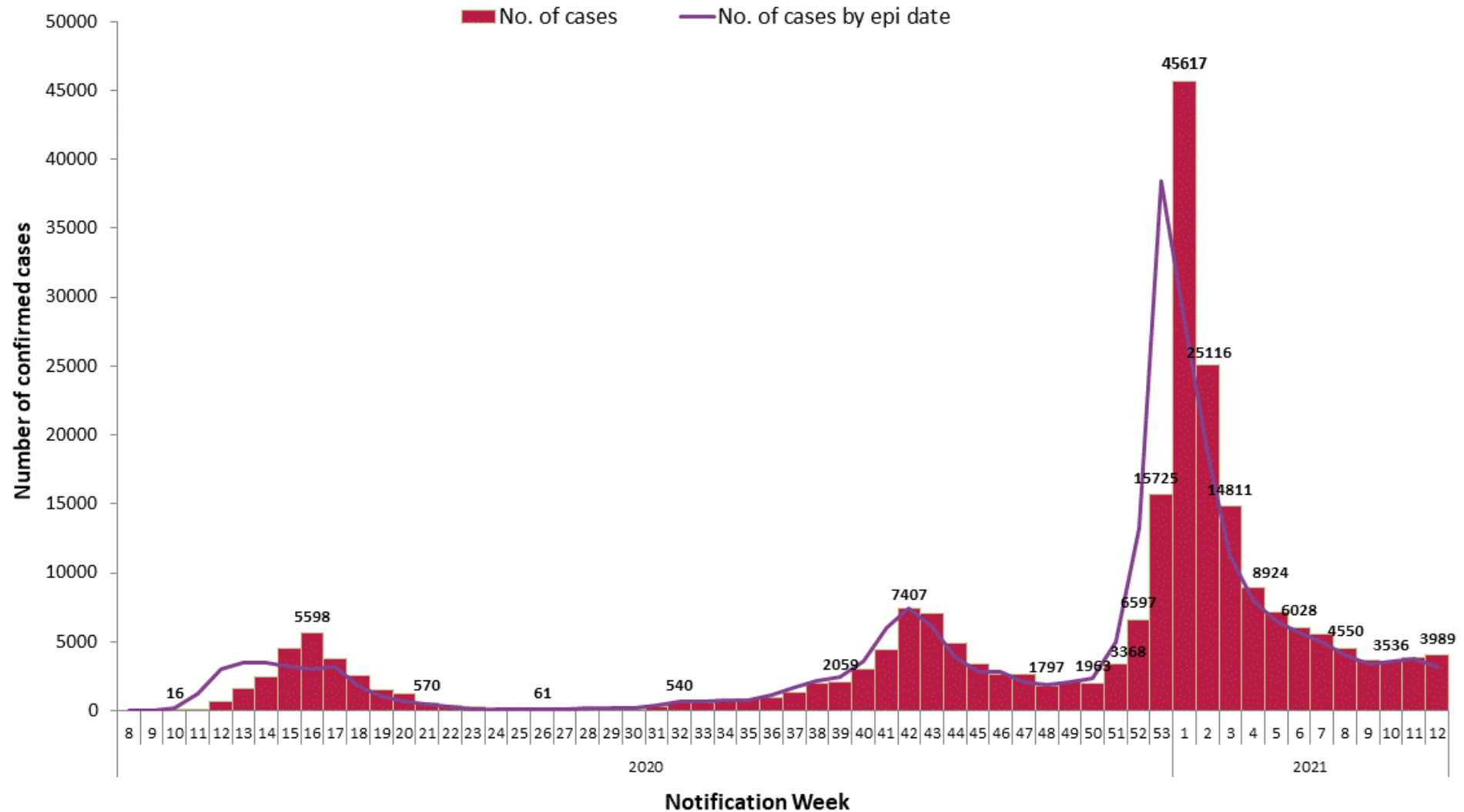


Figure 1a: Number of confirmed COVID-19 cases by notification week and epidemiological week in Ireland between week 8, 2020 and week 12, 2021

At the end of week 53 a significant number of cases were awaiting processing, as a result the number of cases reported in week 53 is reduced and the number of cases reported in week 1 is inflated

In between week 15 and 16 (05/04/2020 – 19/04/2020) the daily number of COVID-19 events notified in Ireland is inflated due to batch reporting of cases with specimen dates between from 19/03/2020 – 01/04/2020 in addition to real-time reporting of cases with contemporaneous specimen dates

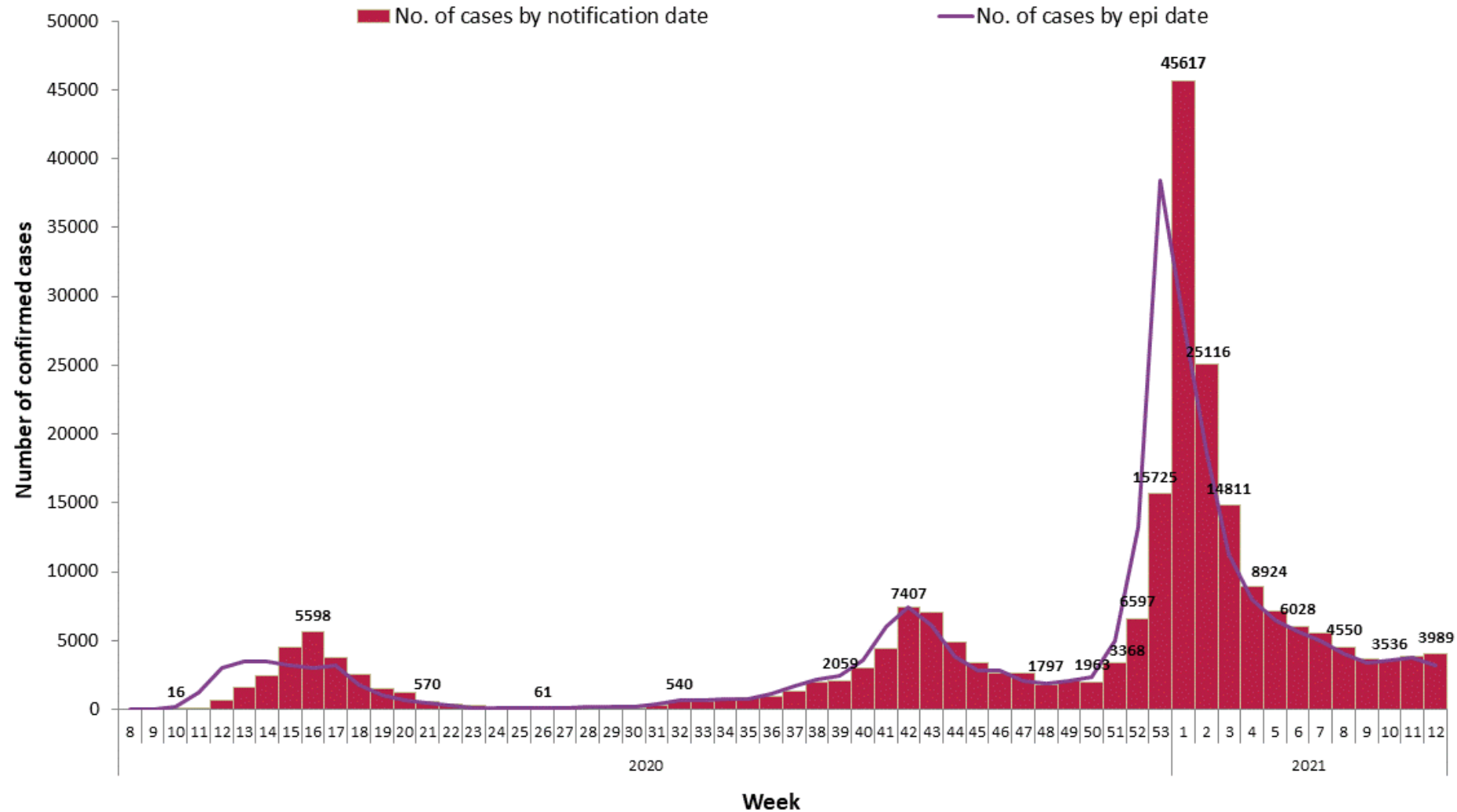


Figure 1b: Number of confirmed COVID-19 cases by notification week and epidemiological week in Ireland between week 48, 2020 and week 12, 2021

At the end of week 53 a significant number of cases were awaiting processing, as a result the number of cases reported in week 53 is reduced and the number of cases reported in week 1 is inflated

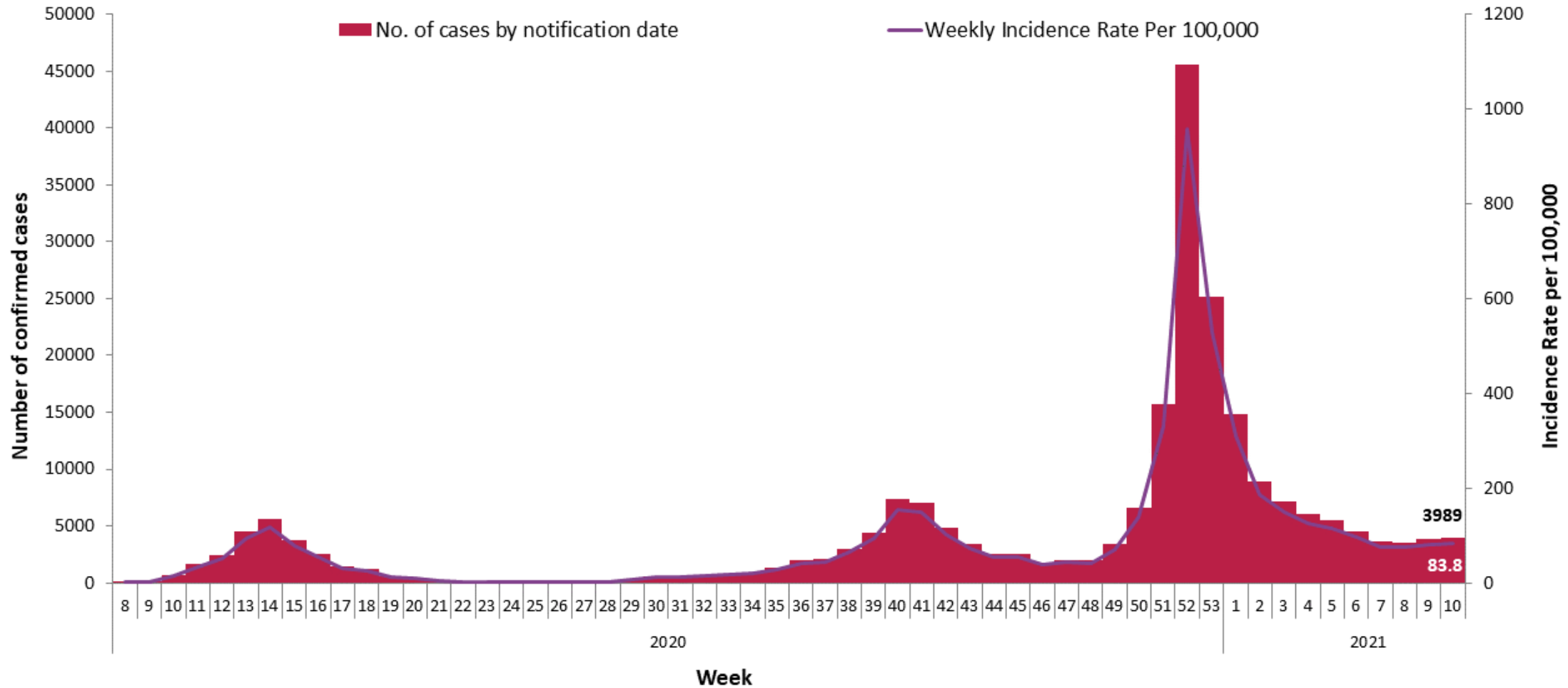


Figure 2: Number of confirmed COVID-19 cases by notification week and weekly incidence rate per 100,000 population in Ireland between week 10, 2020 and week 12, 2021

At the end of week 53 a significant number of cases were awaiting processing, as a result the number of cases reported in week 53 is reduced and the number of cases reported in week 1 is inflated

Population data were taken from Census 2016

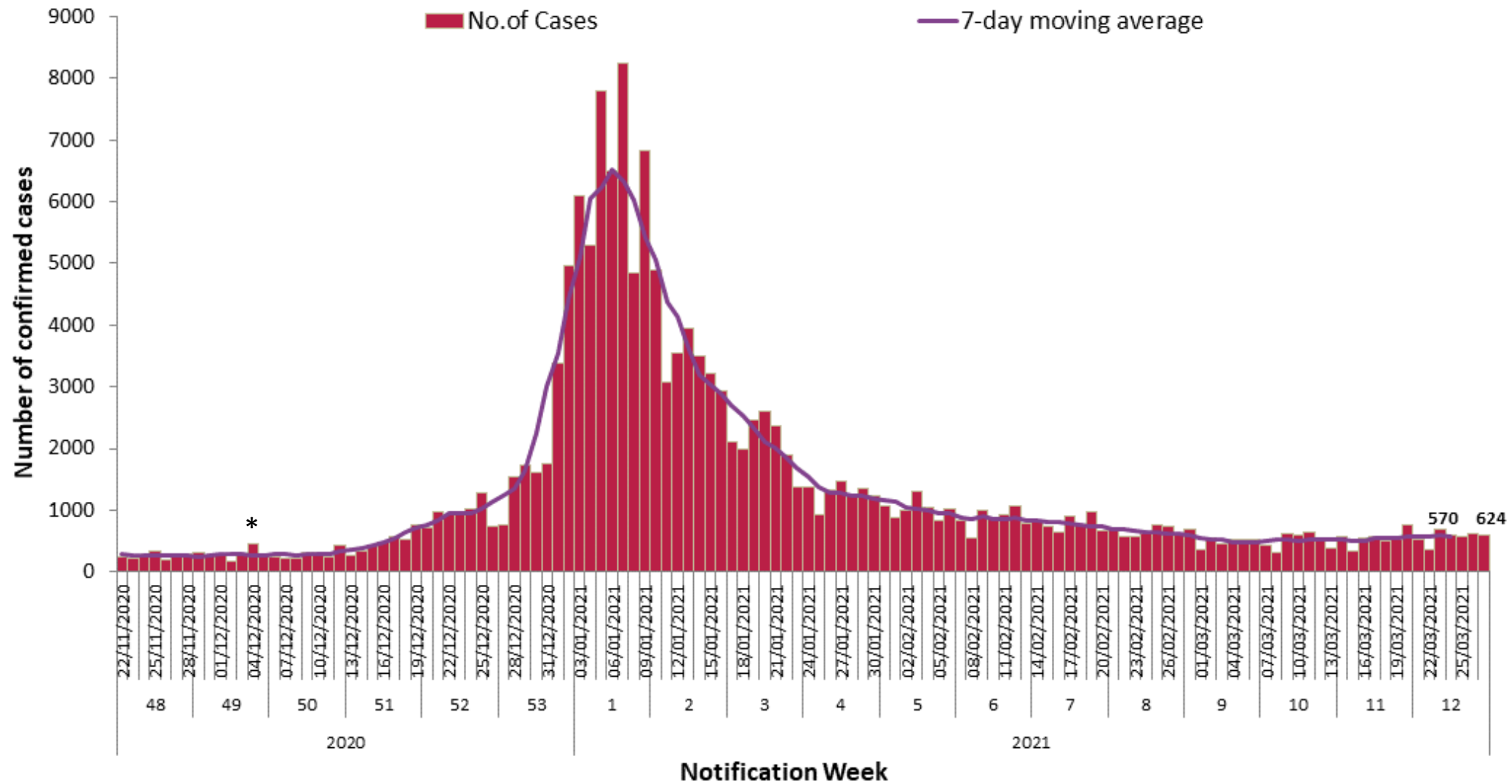


Figure 3: Number of confirmed COVID-19 cases, and 7-day moving average, by notification date in Ireland between week 48, 2020 and week 12, 2021

At the end of week 53 a significant number of cases were awaiting processing, as a result the number of cases reported in week 53 is reduced and the number of cases reported in week 1 is inflated

*On the 04/12/2020 the number of COVID-19 cases notified in Ireland is inflated due to the inclusion of cases notified earlier in week 49 which were batch reported following an IT issue on 02/12/2020

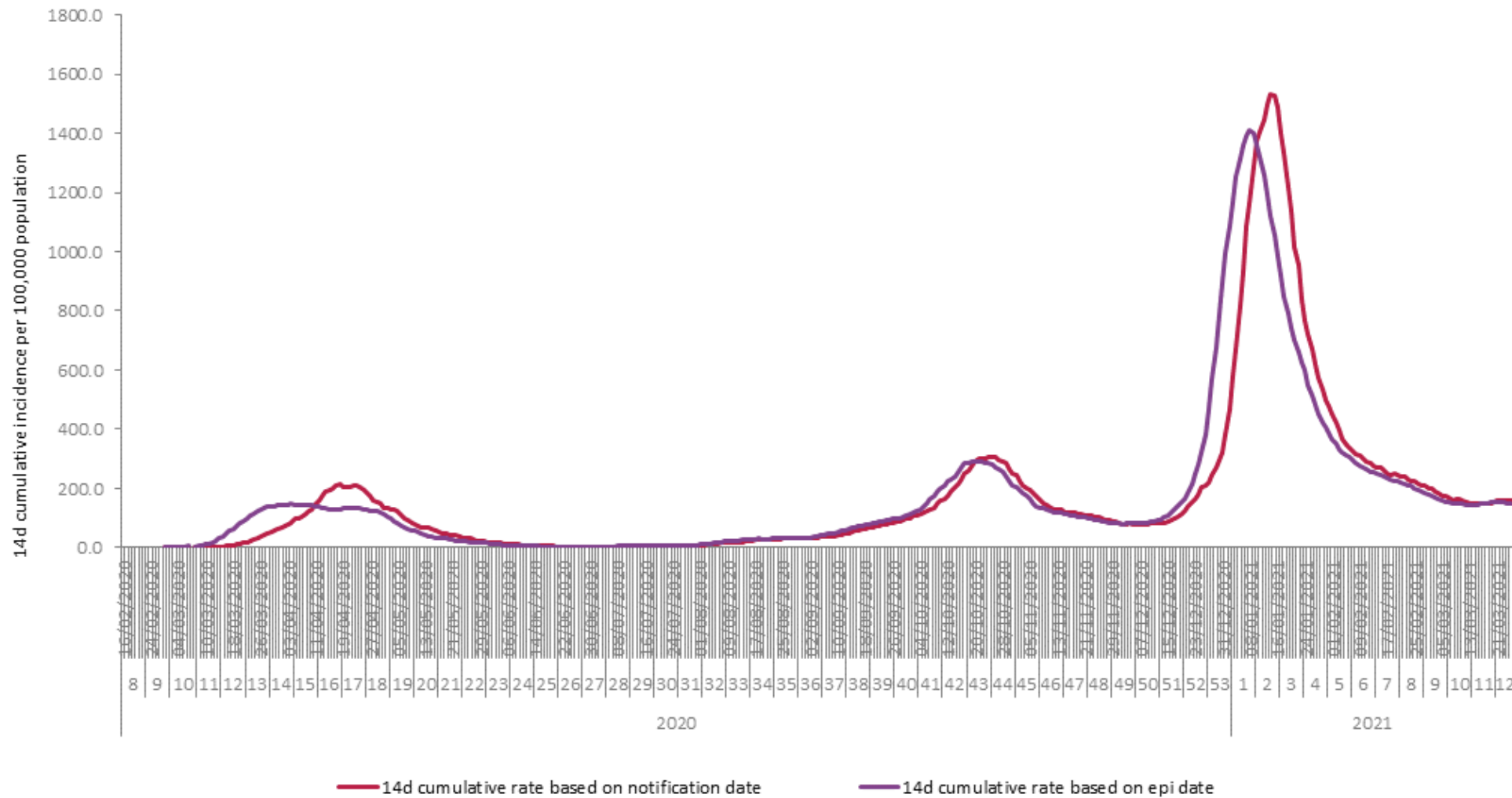


Figure 4a: Cumulative 14-day incidence rate of confirmed COVID-19 cases per 100,000 population notified in Ireland by notification and epidemiological date* between week 8, 2020 and week 12, 2021

At the end of week 53 a significant number of cases were awaiting processing, as a result the number of cases reported in week 53 is reduced and the number of cases reported in week 1 is inflated

*Epidemiological date: is based on the earliest of dates available on the case and taken from date of onset of symptoms, date of diagnosis, laboratory specimen collection date, laboratory received date, laboratory reported date or event creation date/notification date on CIDR. By using this date rather than event creation/notification date, adjusts for any delays in testing/notification. Please note that the trend in cases by epidemiological date will show a lag for recent days and therefore should be interpreted with caution.

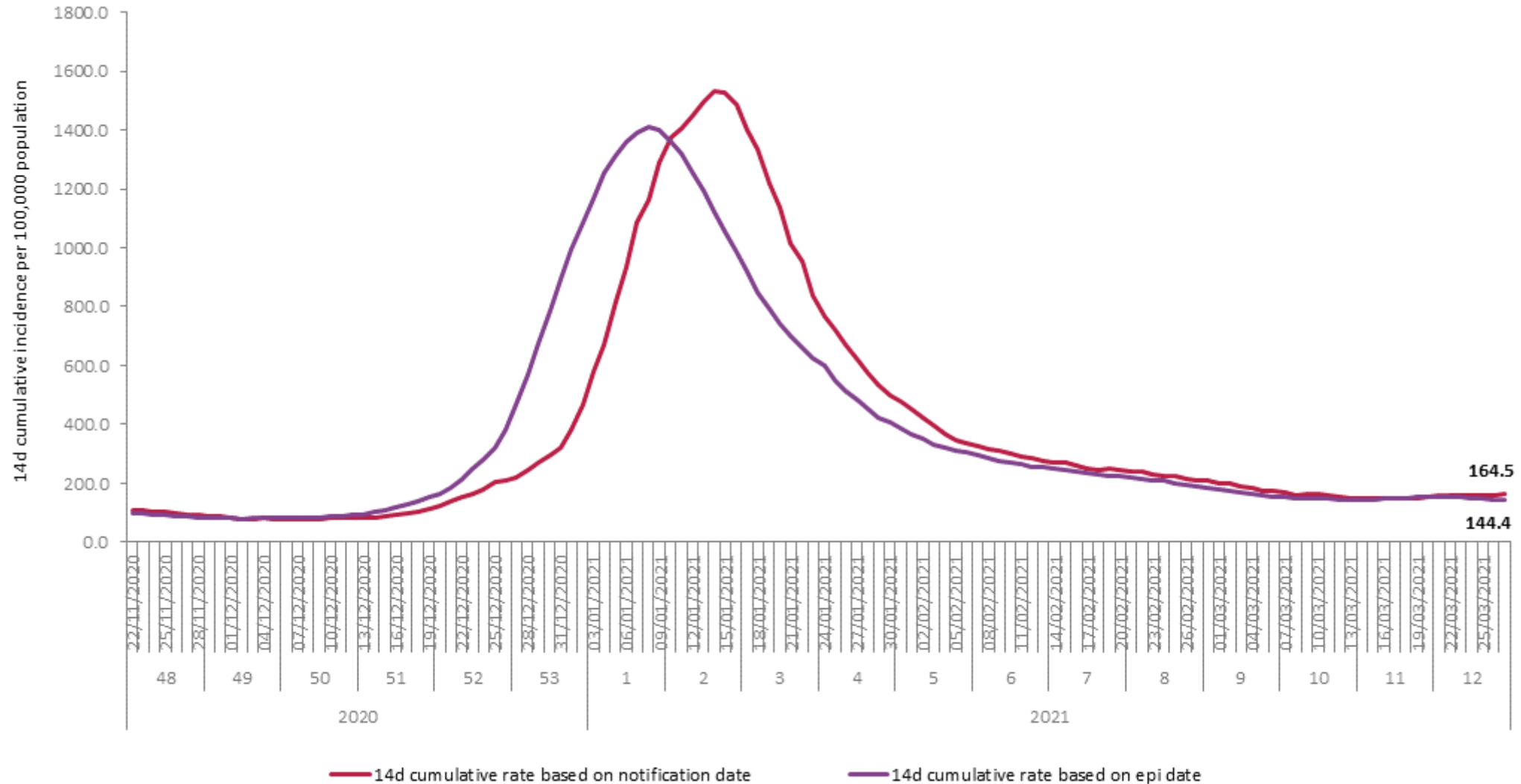


Figure 4b: Cumulative 14-day incidence rate of confirmed COVID-19 cases per 100,000 population notified in Ireland by notification and epidemiological date between week 48, 2020 and week 12, 2021

At the end of week 53 a significant number of cases were awaiting processing, as a result the number of cases reported in week 53 is reduced and the number of cases reported in week 1 is inflated

Table 1: Characteristics of confirmed COVID-19 cases notified in Ireland during week 12, 2021

Characteristic		Week 12	Percent
Total number of confirmed cases		3,989	100
Sex	Male:Female ratio	0.98	
	Male	1,976	49.5
	Female	2,012	50.4
	Unknown	1	0.0
Age	Mean age (years)	31	
	Median age (years)	31	
	Age range (years)	0 - 95	
	0-4 yrs	378	9.5
	5-12 yrs	565	14.2
	13-18 yrs	313	7.8
	19-24 yrs	364	9.1
	25-34 yrs	634	15.9
	35-44 yrs	754	18.9
	45-54 yrs	438	11.0
	55-64 yrs	272	6.8
	65-74 yrs	146	3.7
	75-84 yrs	92	2.3
85+ yrs	33	0.8	
Symptomatic*	Yes	2,285	57.3
	No	869	21.8
	Unknown	835	20.9

*Symptom status is recorded at the time of test and is not updated; therefore, a proportion of the asymptomatic cases may subsequently develop symptoms however this will not be captured in the data

Figure 5a: Cumulative age- and sex-specific incidence rates of confirmed COVID-19 cases per 100,000 population notified in Ireland between week 10, 2020 and week 12, 2021

(excluding 43 cases for whom age is unknown, 86 cases for whom sex is unknown and one case for whom both are unknown)

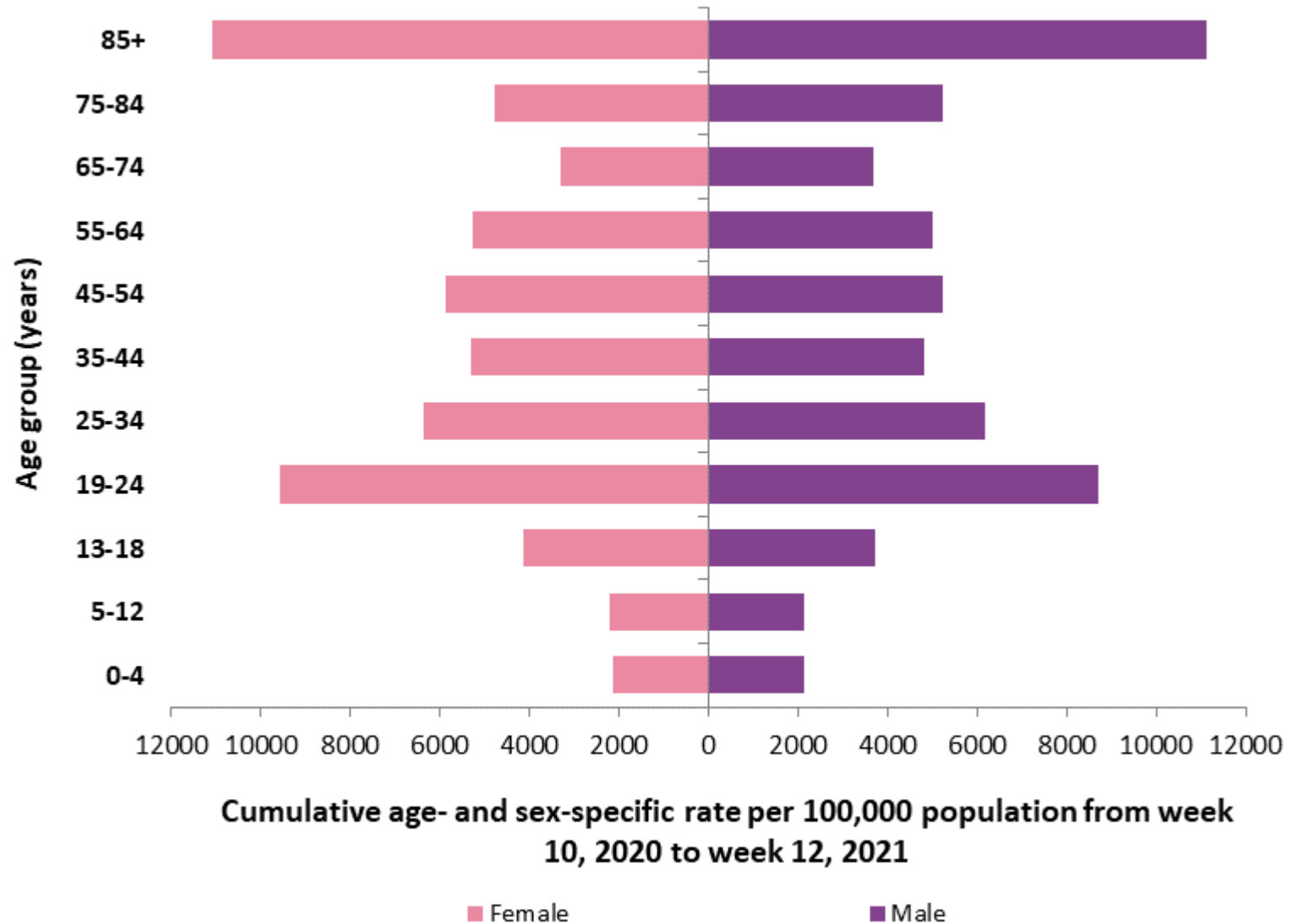


Figure 5b: Cumulative age- and sex-specific incidence rates of confirmed COVID-19 cases per 100,000 population notified in Ireland between week 48, 2020 and week 12, 2021

(excluding 18 cases for whom age is unknown, and 78 cases for whom sex is unknown)

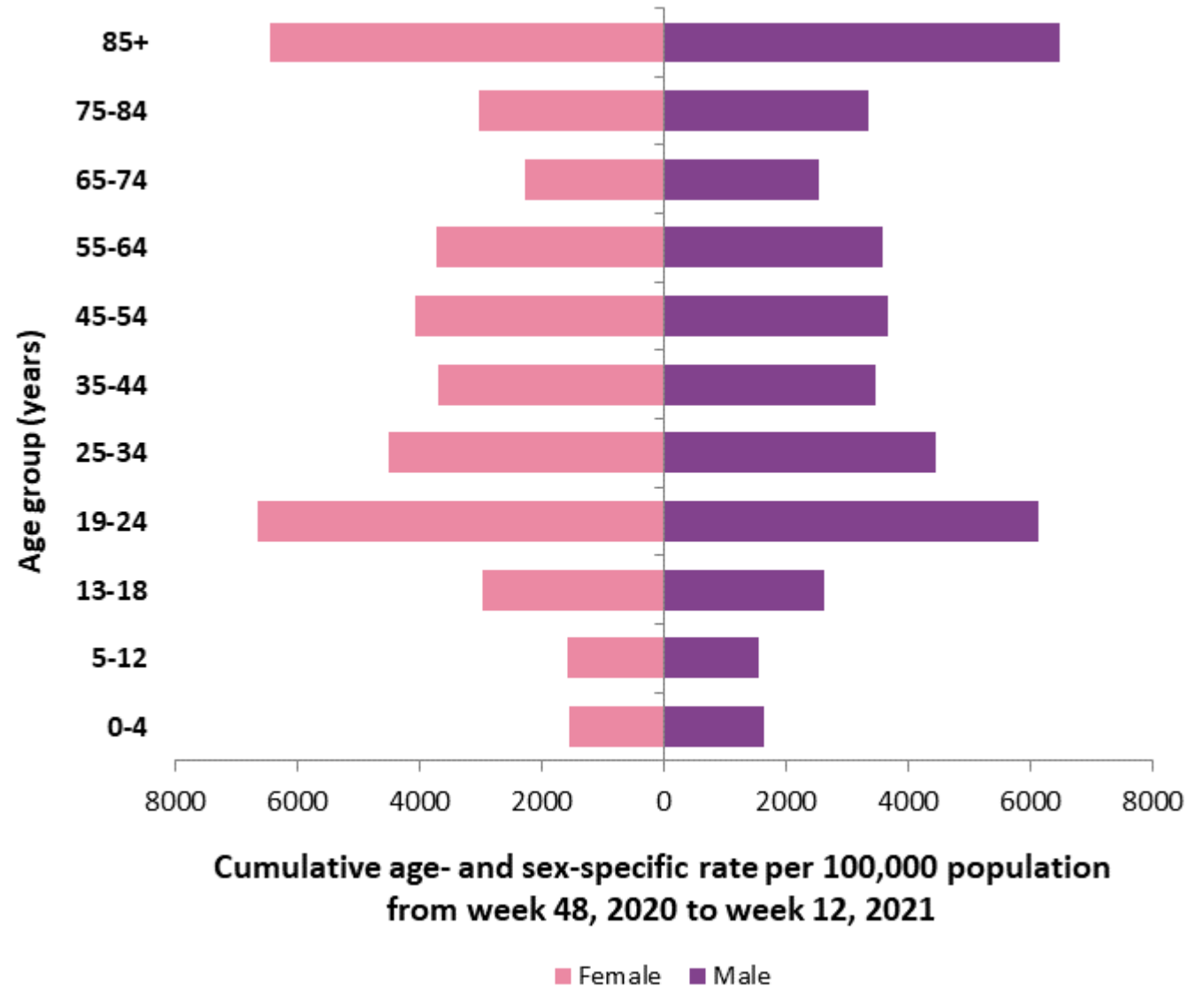
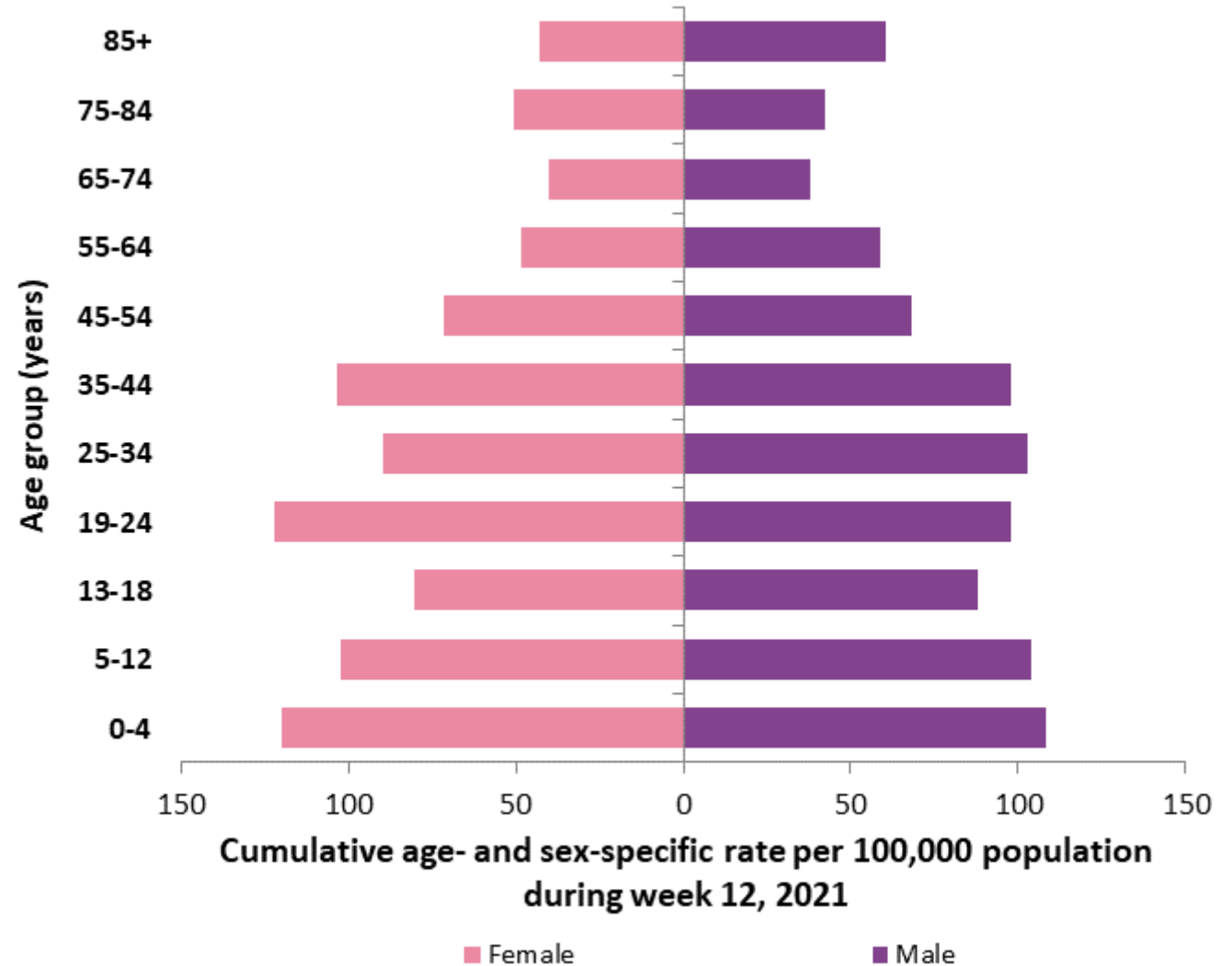


Figure 5c: Cumulative age- and sex-specific incidence rates of confirmed COVID-19 cases per 100,000 population notified in Ireland during week 12, 2021

(excluding one case for whom sex is unknown)



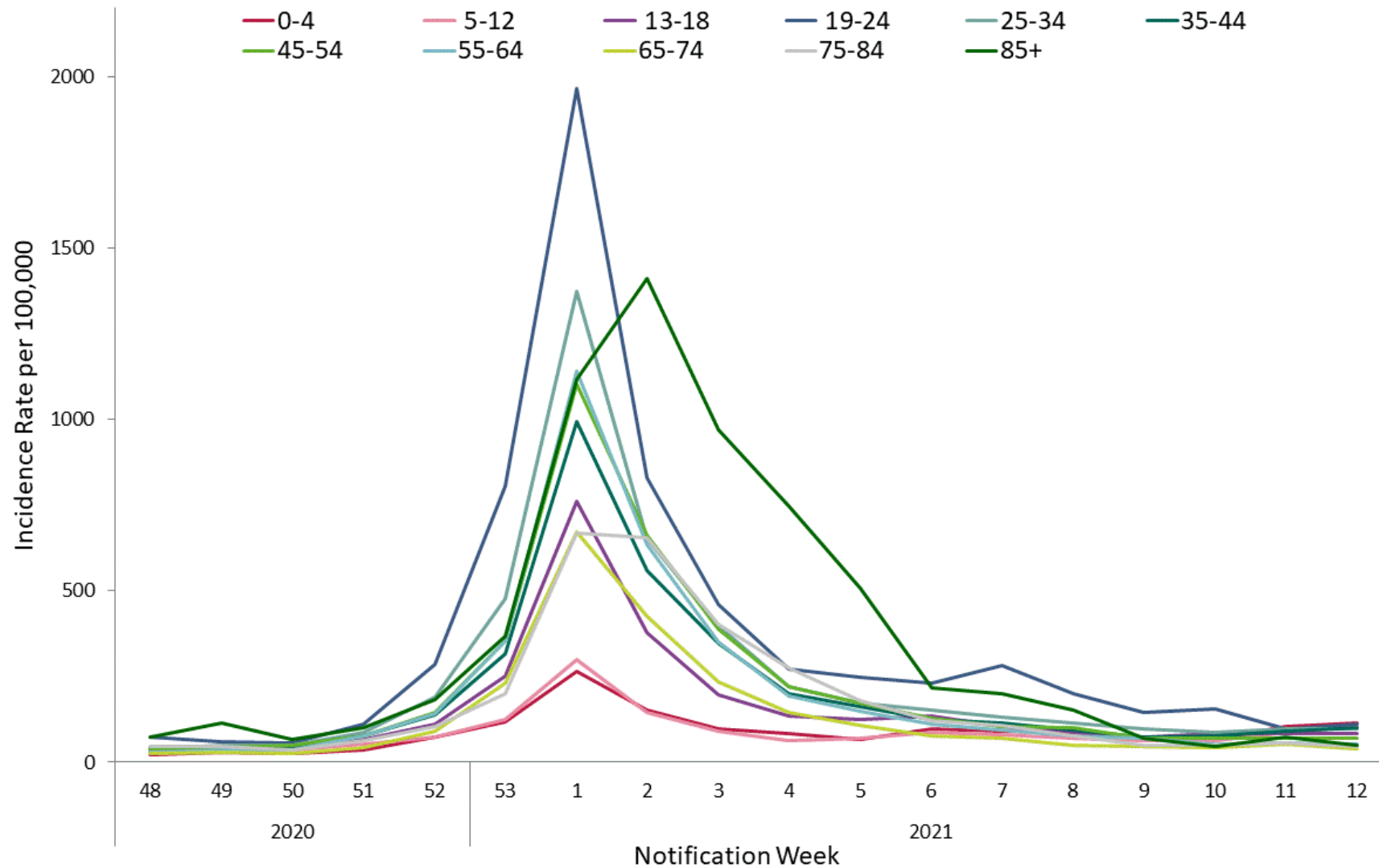


Figure 6a: Weekly age-specific incidence rates of confirmed COVID-19 cases per 100,000 population in Ireland between week 48, 2020 and week 12, 2021

At the end of week 53 a significant number of cases were awaiting processing, as a result the incidence rates reported in week 53 are reduced and the incidence rates reported in week 1 are inflated.

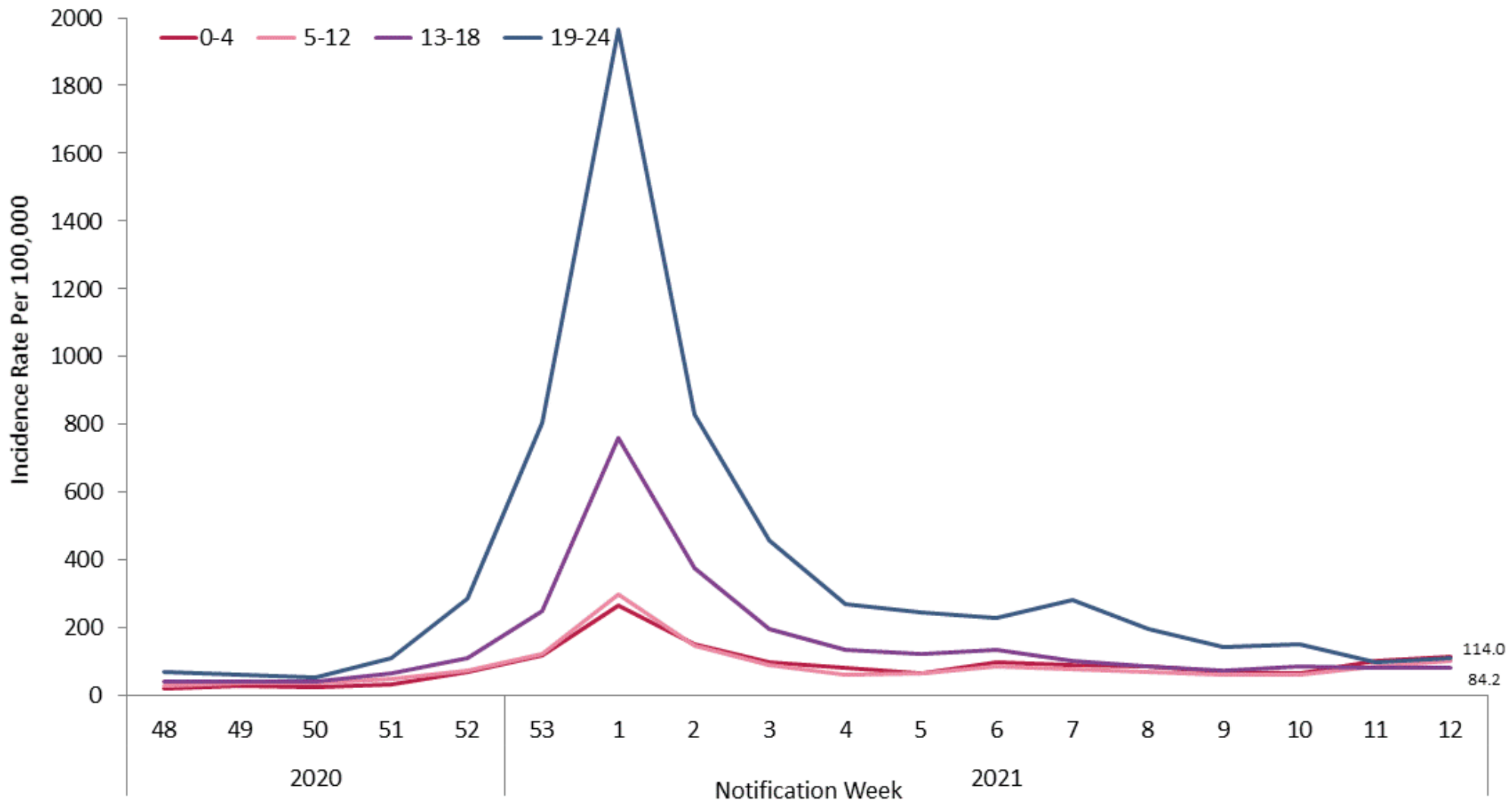


Figure 6b: Weekly age-specific incidence rates of confirmed COVID-19 cases per 100,000 population in Ireland between week 48, 2020 and week 12, 2021

At the end of week 53 a significant number of cases were awaiting processing, as a result the incidence rates reported in week 53 are reduced and the incidence rates reported in week 1 are inflated.

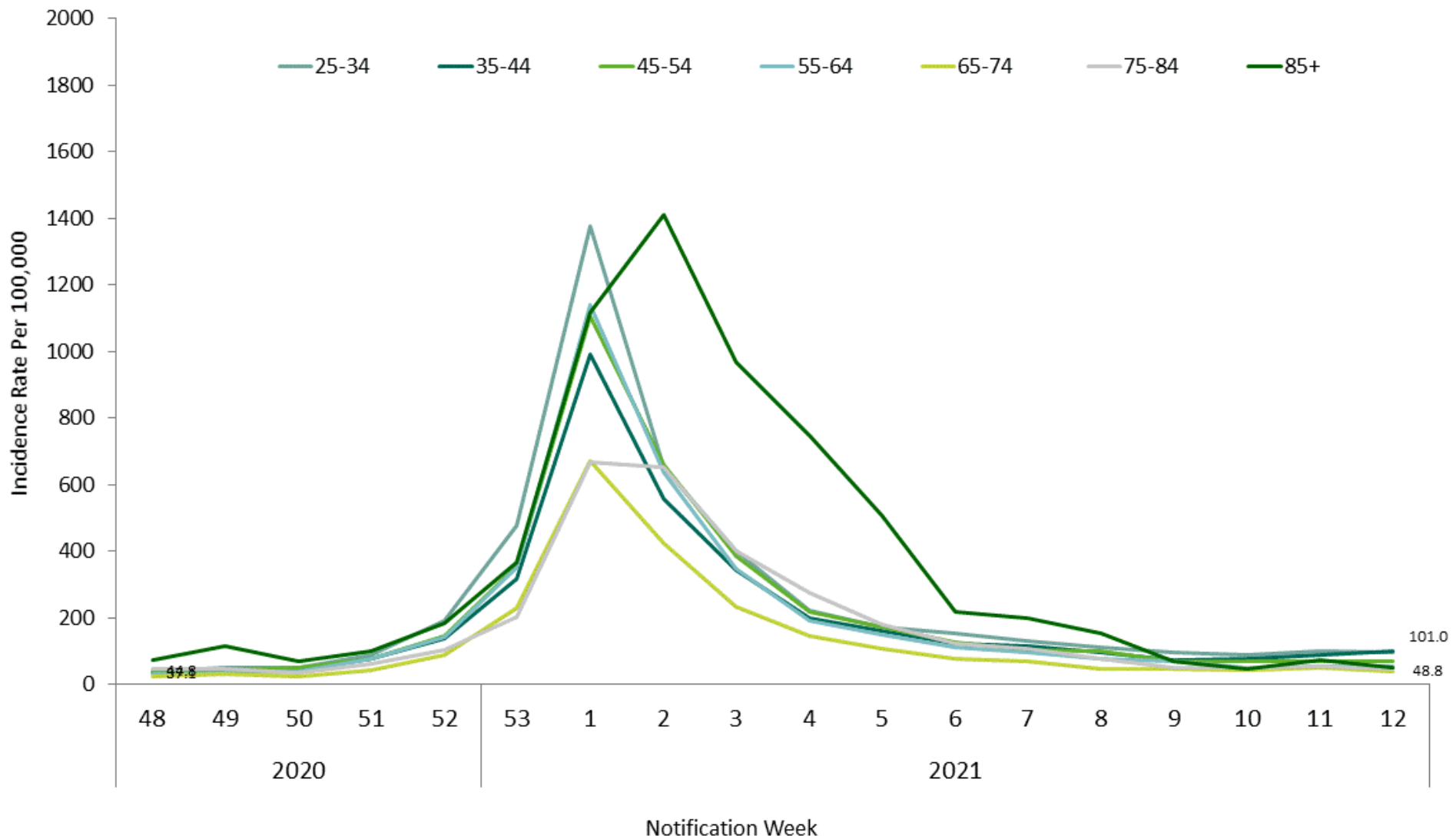


Figure 6c: Weekly age-specific incidence rates of confirmed COVID-19 cases per 100,000 population in Ireland between week 48, 2020 and week 12, 2021

At the end of week 53 a significant number of cases were awaiting processing, as a result the incidence rates reported in week 53 are reduced and the incidence rates reported in week 1 are inflated.

		Age Range											
		0-4	5-12	13-18	19-24	25-34	35-44	45-54	55-64	65-74	75-84	85+	National
2020	48	23.2	29.7	40.9	72.2	39.0	37.1	39.6	30.5	24.1	44.8	74.0	37.7
	49	28.7	38.1	43.1	60.7	48.8	40.3	44.1	35.8	30.3	45.8	114.0	42.5
	50	24.7	36.5	40.9	55.3	50.3	41.6	49.0	37.3	24.9	34.1	68.1	41.2
	51	35.3	51.4	65.1	112.0	88.0	75.8	75.4	75.3	44.2	62.1	100.7	70.7
	52	72.4	74.9	110.9	286.2	190.2	139.8	145.8	141.1	88.9	102.8	182.1	138.5
	53	117.9	125.4	250.0	806.4	478.5	316.2	355.1	352.7	231.3	201.0	367.1	330.2
2021	1	266.4	299.8	759.7	1964.6	1374.3	991.6	1104.2	1139.6	670.9	669.2	1117.6	958.0
	2	152.6	146.0	376.2	828.5	652.1	557.3	660.5	635.8	425.4	653.4	1410.7	527.4
	3	97.1	91.5	197.0	458.6	399.0	345.6	387.4	349.3	234.0	402.5	968.1	311.0
	4	84.2	63.8	135.1	271.4	221.0	200.2	218.8	192.4	146.7	275.3	746.1	187.4
	5	64.9	68.2	124.3	247.0	171.5	161.9	173.2	149.1	106.6	179.1	506.3	150.0
	6	98.3	85.3	135.1	231.0	152.4	124.0	127.6	110.0	77.6	121.6	217.6	126.6
	7	91.7	79.5	103.1	281.7	131.8	115.8	104.1	95.1	68.8	106.9	198.4	116.1
	8	86.0	68.7	87.5	198.7	112.8	95.5	99.2	76.8	48.5	76.8	152.5	95.6
	9	70.9	62.7	74.3	145.2	96.0	73.1	70.9	69.6	46.3	48.9	69.6	76.2
	10	66.4	64.2	85.0	153.7	87.8	77.8	68.4	51.9	42.0	49.9	47.4	74.3
	11	103.5	88.4	83.4	97.8	98.3	89.6	69.0	55.6	51.1	55.5	72.5	80.7
	12	114.0	103.0	84.2	109.9	96.1	101.0	70.0	53.4	39.1	46.8	48.8	83.8

Figure 7: Heat map of weekly age-specific incidence rates of confirmed COVID-19 cases per 100,000 population in Ireland between week 48, 2020 and week 12, 2021

At the end of week 53 a significant number of cases were awaiting processing, as a result the incidence rates reported in week 53 are reduced and the incidence rates reported in week 1 are inflated.

COVID-19 cases in children 18 years and under

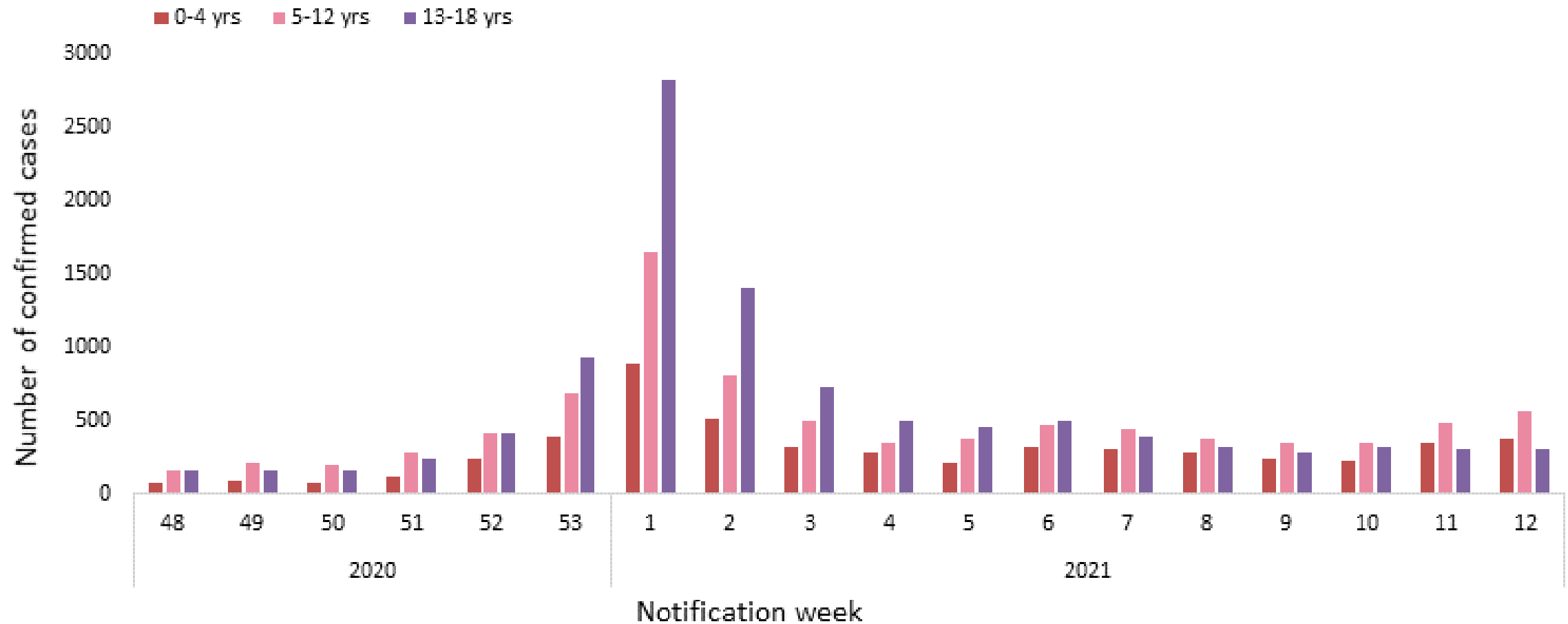


Figure 8: Weekly number of age-specific confirmed COVID-19 cases by notification week in Ireland between week 48, 2020 and week 12, 2021

At the end of week 53 a significant number of cases were awaiting processing, as a result the incidence rates reported in week 53 are reduced and the incidence rates reported in week 1 are inflated.

COVID-19 cases in children 18 years and under

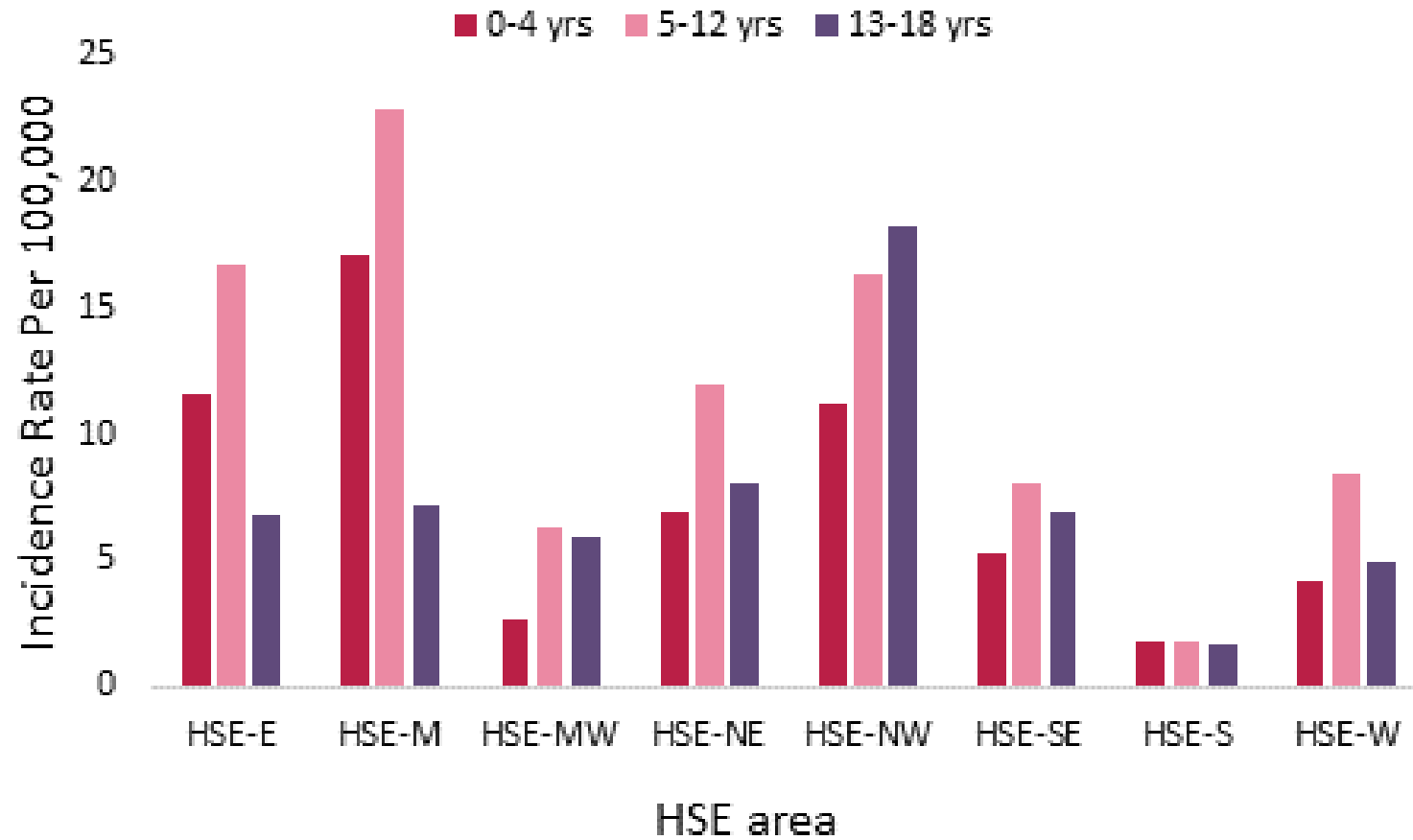


Figure 9: Age-specific incidence rates of confirmed COVID-19 cases per 100,000 population, by HSE area, notified in Ireland during week 12, 2021

Table 2: Characteristics of confirmed COVID-19 cases by county notified in Ireland, during week 12, 2021

County	Cases		M:F ratio	Median age	Incidence Rate per 100,000
	N	%		(years)	
Offaly	203	5.1	1.3	28	260.4
Donegal	265	6.6	1.0	25	166.5
Dublin	1681	42.1	0.9	32	124.8
Westmeath	104	2.6	0.9	31	117.2
Kildare	253	6.3	0.9	33	113.7
Meath	215	5.4	1.1	33	110.2
Laois	92	2.3	1.0	36.5	108.6
Louth	118	3.0	1.1	32.5	91.6
Tipperary	143	3.6	1.0	29	89.6
Cavan	63	1.6	0.9	38	82.7
Longford	31	0.8	1.1	32	75.8
Wexford	106	2.7	1.2	34.5	70.8
Wicklow	97	2.4	0.9	20	68.1
Limerick	105	2.6	1.4	23	53.9
Roscommon	33	0.8	0.8	28	51.1
Galway	127	3.2	1.3	25	49.2
Waterford	52	1.3	1.4	40.5	44.8
Leitrim	14	0.4	0.6	54.5	43.7
Mayo	56	1.4	1.3	35.5	42.9
Carlow	19	0.5	0.6	36	33.4
Clare	34	0.9	1.6	28.5	28.6
Kilkenny	26	0.7	0.9	12	26.2
Cork	121	3.0	0.9	27	22.3
Monaghan	12	0.3	1.0	30	19.5
Sligo	9	0.2	0.3	58	13.7
Kerry	10	0.3	1.5	27.5	6.8

		Carlow	Cavan	Clare	Cork	Donegal	Dublin	Galway	Kerry	Kildare	Kilkenny	Laois	Leitrim	Limerick	Longford	Louth	Mayo	Meath	Monaghan	Offaly	Roscommon	Sligo	Tipperary	Waterford	Westmeath	Wexford	Wicklow	National
2020	48	31.6	19.7	14.3	24.5	111.2	43.6	20.2	21.0	21.1	83.6	28.3	3.1	60.5	41.6	74.5	36.8	24.6	31.0	23.1	23.2	21.4	45.1	41.3	13.5	7.3	52.7	37.7
	49	72.0	40.7	19.4	13.4	112.4	50.9	31.0	12.2	27.4	86.7	26.0	12.5	79.5	44.0	83.0	43.7	25.1	97.7	34.6	24.8	15.3	44.5	21.5	13.5	12.0	68.1	42.5
	50	82.6	68.3	12.6	12.9	107.4	42.2	28.7	8.1	30.1	111.9	69.7	12.5	50.8	97.9	93.1	65.9	34.4	39.1	30.8	20.1	33.6	38.9	46.5	15.8	24.0	35.8	41.2
	51	110.7	106.3	14.3	38.9	154.5	81.9	23.3	99.5	54.8	84.7	105.1	12.5	99.5	46.5	144.3	50.6	74.3	86.3	34.6	21.7	59.5	27.0	59.4	28.2	142.9	32.3	70.7
	52	108.9	89.3	105.2	123.4	271.4	166.5	98.8	148.9	113.7	185.4	86.2	56.2	227.3	34.3	166.8	79.7	105.6	372.2	46.2	66.6	131.2	72.1	99.0	80.0	204.4	81.4	138.5
	53	244.2	506.7	396.4	282.4	553.4	276.4	275.9	299.2	164.9	305.3	331.8	287.1	613.1	340.1	773.6	491.2	372.2	858.5	310.4	311.4	497.4	198.1	233.3	247.8	281.2	118.7	330.2
2021	1	1082.0	976.7	990.6	1054.8	853.1	1196.9	454.2	761.0	806.3	851.5	540.8	424.4	1224.7	565.2	1430.0	668.9	768.5	1668.1	554.1	416.8	631.7	614.2	1302.3	452.9	1177.5	498.5	958.0
	2	669.2	447.6	471.3	527.6	532.1	561.5	630.1	281.0	397.7	314.4	429.8	149.8	642.9	178.6	810.8	970.8	458.9	1008.4	402.8	503.5	212.1	410.5	571.5	243.3	665.2	313.8	527.4
	3	430.3	347.9	193.6	273.0	294.0	372.1	251.9	156.4	307.0	153.2	236.1	137.3	312.0	212.9	450.8	350.9	318.9	659.8	311.7	147.2	218.2	246.3	395.1	169.0	393.4	221.2	311.0
	4	263.5	141.8	110.3	152.0	185.9	229.9	170.5	81.9	147.0	84.7	146.4	74.9	172.4	181.0	284.8	223.0	184.1	413.8	215.5	68.2	138.9	147.3	285.8	117.2	241.1	127.1	187.4
	5	187.9	116.8	74.9	120.1	128.1	181.8	163.5	71.1	154.6	72.6	159.4	84.3	141.1	127.2	184.7	155.5	163.0	347.0	134.7	62.0	112.9	73.3	207.4	121.7	209.7	106.7	150.0
	6	159.8	153.6	63.1	60.1	70.4	185.3	150.7	35.9	126.3	59.5	154.7	59.3	114.9	119.9	156.0	121.8	136.9	166.2	203.9	57.3	58.0	83.4	128.3	119.4	106.9	66.7	126.6
	7	89.6	112.9	80.8	37.2	80.4	157.0	180.2	12.9	145.2	48.4	147.6	96.7	139.0	173.7	135.0	136.4	111.3	164.5	221.9	48.0	45.8	109.7	136.9	100.3	64.1	50.6	116.1
	8	100.1	61.7	69.9	28.9	107.4	131.4	97.7	36.6	105.2	33.3	113.3	59.3	139.6	193.3	131.9	91.9	110.7	78.2	180.9	55.8	42.7	82.1	73.2	139.7	38.7	47.7	95.6
	9	58.0	48.6	55.5	27.6	53.4	116.7	54.3	27.8	73.3	30.2	62.6	21.8	73.4	217.7	105.5	69.0	109.2	52.1	166.8	58.9	33.6	62.7	38.7	103.6	34.7	49.9	76.2
	10	47.4	21.0	21.0	26.2	94.2	106.9	64.7	26.4	144.3	14.1	30.7	18.7	71.8	178.6	67.5	55.9	96.4	44.0	224.5	68.2	44.3	43.2	63.7	67.6	44.7	39.3	74.3
	11	86.1	64.3	36.2	19.9	117.5	121.9	70.1	26.4	107.0	23.2	54.3	18.7	45.2	115.0	66.7	16.1	118.9	26.1	182.1	85.2	56.5	100.9	82.6	68.7	77.5	52.0	80.7
	12	33.4	82.7	28.6	22.3	166.5	124.8	49.2	6.8	113.7	26.2	108.6	43.7	53.9	75.8	91.6	42.9	110.2	19.5	260.4	51.1	13.7	89.6	44.8	117.2	70.8	68.1	83.8

Figure 8: Heat map of weekly incidence rates of confirmed COVID-19 cases per 100,000 population, by county, notified in Ireland between week 48, 2020 and week 12, 2021

At the end of week 53 a significant number of cases were awaiting processing, as a result the incidence rates reported in week 53 are reduced and the incidence rates reported in week 1 are inflated.

		HSE-E	HSE-M	HSE-MW	HSE-NE	HSE-NW	HSE-SE	HSE-S	HSE-W	National	
2020	Notification Week	48	41.5	24.3	40.5	38.7	74.4	41.3	23.7	25.4	37.7
		49	49.3	27.4	50.6	53.7	74.8	43.7	13.2	33.8	42.5
		50	40.1	46.9	36.4	57.1	76.4	55.6	11.9	38.2	41.2
		51	74.3	54.7	59.7	101.0	112.0	89.0	51.8	30.9	70.7
		52	152.5	66.4	169.9	133.2	207.8	136.4	128.9	88.7	138.5
		53	248.8	302.1	482.9	572.4	504.0	246.1	286.0	343.0	330.2
2021	Notification Week	1	1088.1	521.0	1017.1	1106.8	745.5	1051.3	991.9	510.7	958.0
		2	519.6	330.8	551.2	629.1	402.4	528.9	474.8	710.2	527.4
		3	351.1	233.3	256.4	406.0	255.5	330.6	248.1	265.5	311.0
		4	210.5	160.8	155.1	236.4	159.3	202.2	137.0	171.0	187.4
		5	172.0	136.8	109.1	186.2	118.6	155.8	109.6	146.8	150.0
		6	167.7	152.2	87.8	149.2	65.5	108.4	54.9	129.1	126.6
		7	146.6	156.7	114.0	125.6	73.3	89.5	32.0	148.8	116.1
		8	121.1	150.5	106.0	104.5	84.5	60.9	30.6	90.0	95.6
		9	105.5	124.5	66.0	90.8	44.2	42.1	27.7	59.1	76.2
		10	106.2	114.3	51.4	69.1	71.7	42.7	26.2	62.7	74.3
		11	114.1	101.3	52.7	83.2	89.2	73.1	21.3	56.7	80.7
	11	118.6	147.1	53.2	88.6	111.7	54.9	19.0	47.7	83.8	

Figure 9: Weekly Incidence rates of confirmed COVID-19 cases per 100,000 population, by HSE area, notified in Ireland between week 48, 2020 and week 12, 2021

At the end of week 53 a significant number of cases were awaiting processing, as a result the incidence rates reported in week 53 are reduced and the incidence rates reported in week 1 are inflated

		CHO1	CHO2	CHO3	CHO4	CHO5	CHO6	CHO7	CHO8	CHO9
2020	48	57.8	25.4	40.5	23.7	41.3	55.3	31.8	34.7	43.9
	49	72.6	33.8	50.6	13.2	43.7	66.3	34.1	38.1	56.2
	50	69.8	38.2	36.4	11.9	55.6	47.8	31.5	52.3	45.2
	51	108.1	30.9	59.7	51.8	89.0	74.4	51.4	79.3	100.3
	52	186.1	88.7	169.9	128.9	136.4	178.8	129.9	99.3	162.2
	53	565.3	343.0	482.9	286.0	246.1	259.9	189.3	420.8	309.6
2021	1	938.7	510.7	1017.1	991.9	1051.3	1025.4	975.7	786.1	1254.7
	2	509.6	710.2	551.2	474.8	528.9	475.2	453.3	469.4	622.5
	3	338.6	265.5	256.4	248.1	330.6	322.6	314.3	304.4	410.5
	4	195.5	171.0	155.1	137.0	202.2	185.0	188.2	194.4	251.7
	5	155.1	146.8	109.1	109.6	155.8	142.5	150.5	154.4	214.7
	6	99.2	129.1	87.8	54.9	108.4	135.4	133.7	147.4	226.4
	7	95.8	148.8	114.0	32.0	89.5	112.2	123.8	137.3	193.9
	8	80.0	90.0	106.0	30.6	60.9	89.5	94.2	133.4	171.1
	9	46.8	59.1	66.0	27.7	42.1	91.1	67.7	115.1	157.4
	10	58.3	62.7	51.4	26.2	42.7	49.3	95.2	98.3	153.7
	11	75.4	56.7	52.7	21.3	73.1	68.9	87.2	99.1	172.7
	12	92.8	47.7	53.2	19.0	54.9	85.9	102.9	123.2	156.7

Figure 10: Weekly Incidence rates of confirmed COVID-19 cases per 100,000 population by CHO notified in Ireland between week 48, 2020 and week 12, 2021

At the end of week 53 a significant number of cases were awaiting processing, as a result the incidence rates reported in week 53 are reduced and the incidence rates reported in week 1 are inflated.

Please note: Please be advised that the CCA data are currently being validated and the table with these data (Figure 11) will be reintroduced once validation is complete.

Laboratory data for COVID-19 cases

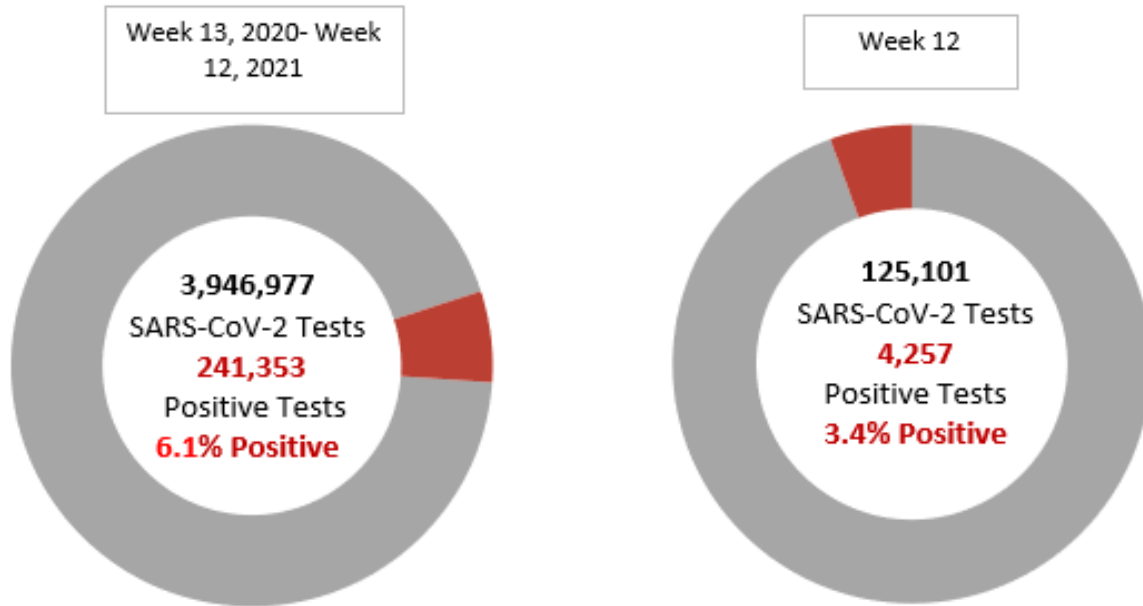


Figure 12a: Number of SARS-CoV-2 tests and positive tests* in Ireland between week 13, 2020 and week 12, 2021

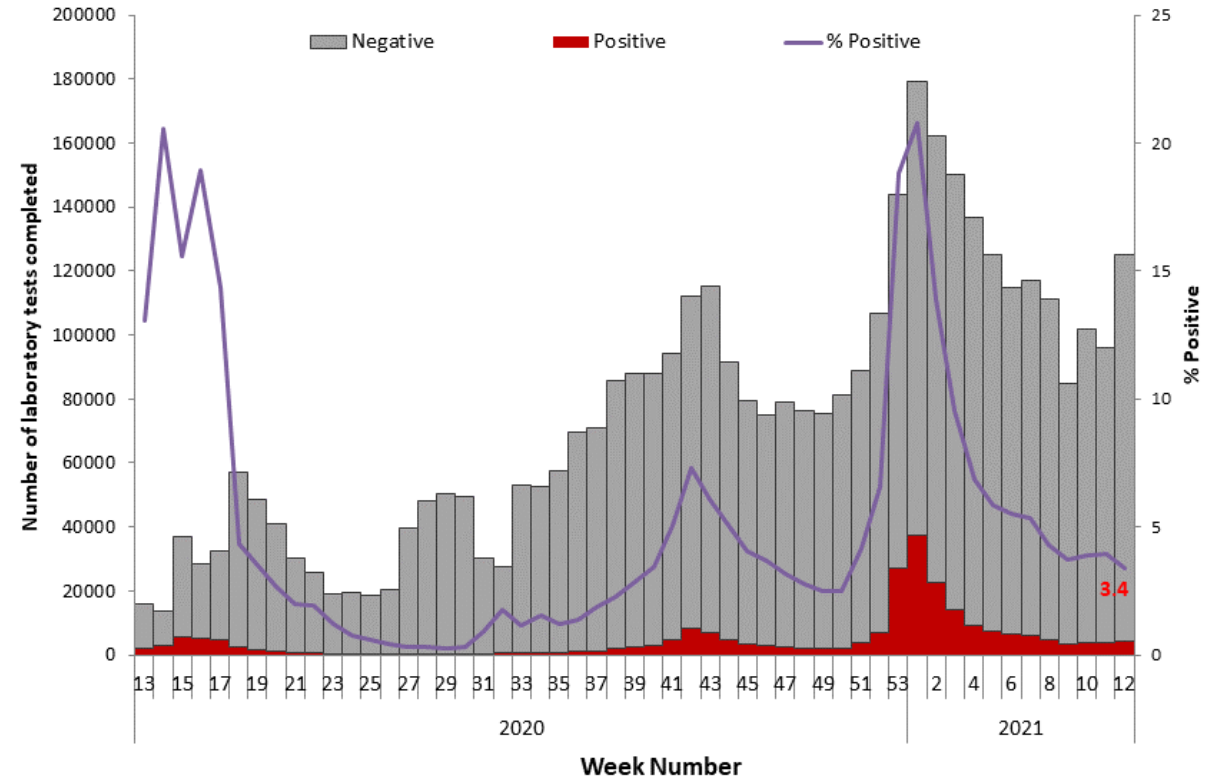
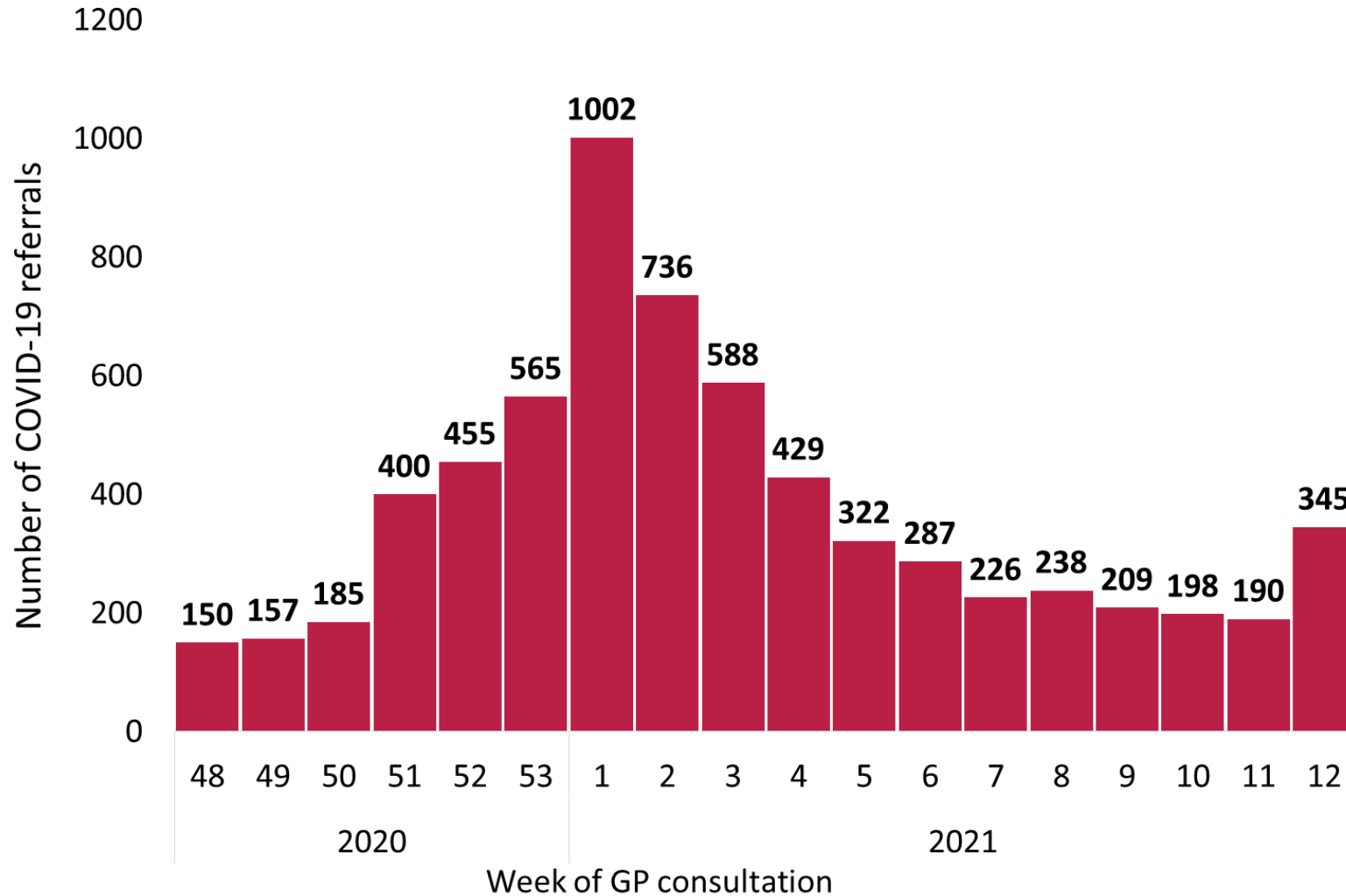


Figure 12b: Number of SARS-CoV-2 negative and positive tests* completed in Ireland between week 13, 2020 and week 12, 2021

*Positive tests refers to all positive specimens and includes duplicates and individuals who were retested

Number of sentinel GP COVID-19 referrals by week of consultation



- The Irish Sentinel GP Surveillance Scheme is a collaboration between the Health Protection Surveillance Centre, the National Virus Reference Laboratory and the Irish College of General Practitioners.
- The sentinel GP network comprises 60 general practices and 166 practitioners, covering 6.6% of the national population (CSO Census 2016).

Figure 13a: Number of sentinel GP COVID-19 referrals by week of consultation, weeks 48 2020-12 2021, Ireland. The epidemiological week is Monday-Sunday (ISO week) in line with influenza/COVID-19 international reporting to European Centre for Disease Prevention and Control (ECDC).

% SARS-CoV-2 positivity data from sentinel GP COVID-19 referrals tested by NVRL

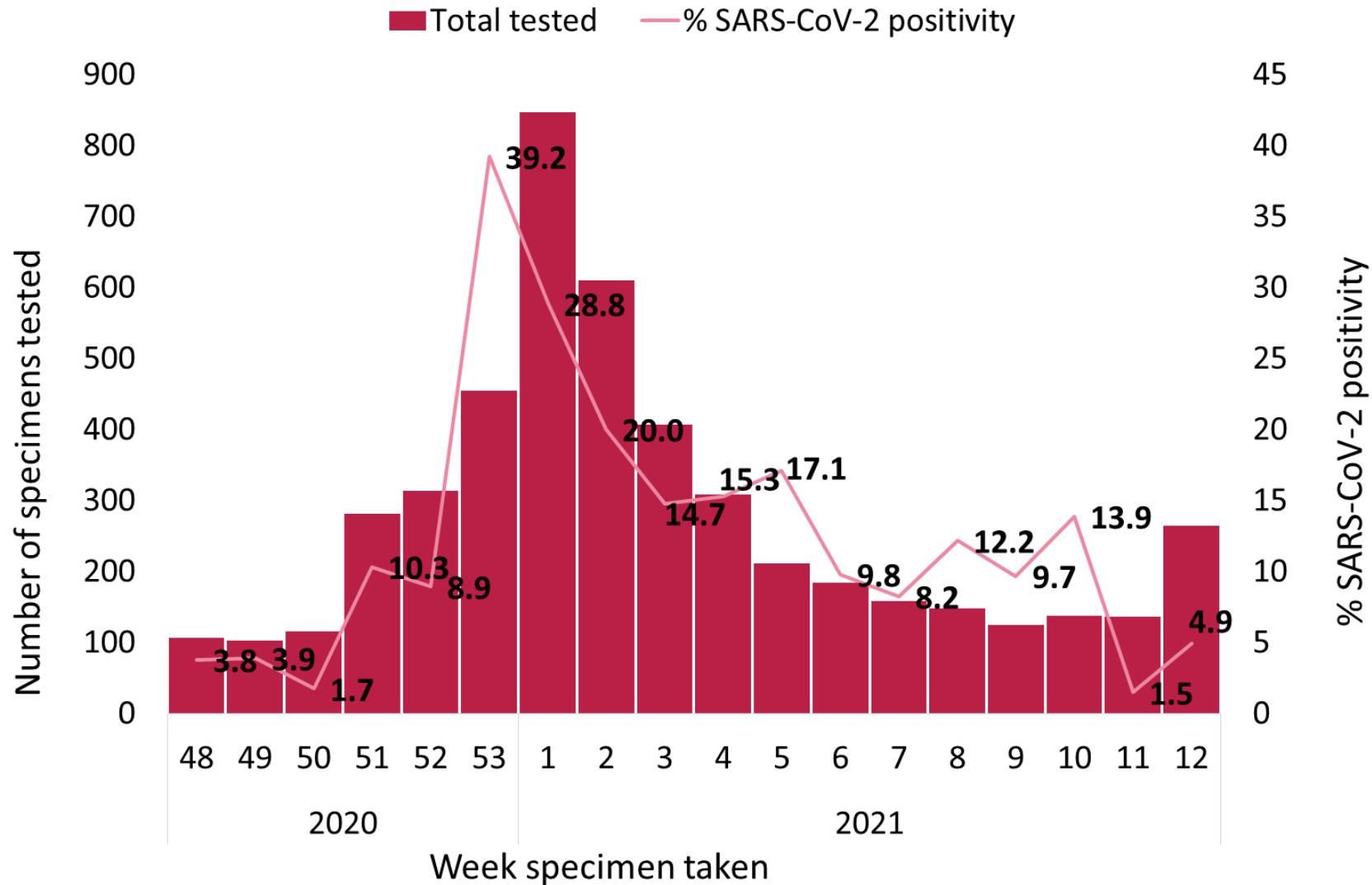


Figure 13b: % SARS-CoV-2 positivity data from sentinel GP COVID-19 referrals tested by the NVRL by week specimen was taken, weeks 48 2020 to 12 2021. The Epidemiological week is Monday to Sunday (ISO week) in line with influenza/COVID-19 international reporting to ECDC.

Hospitalisations and ICU admissions among COVID-19 cases

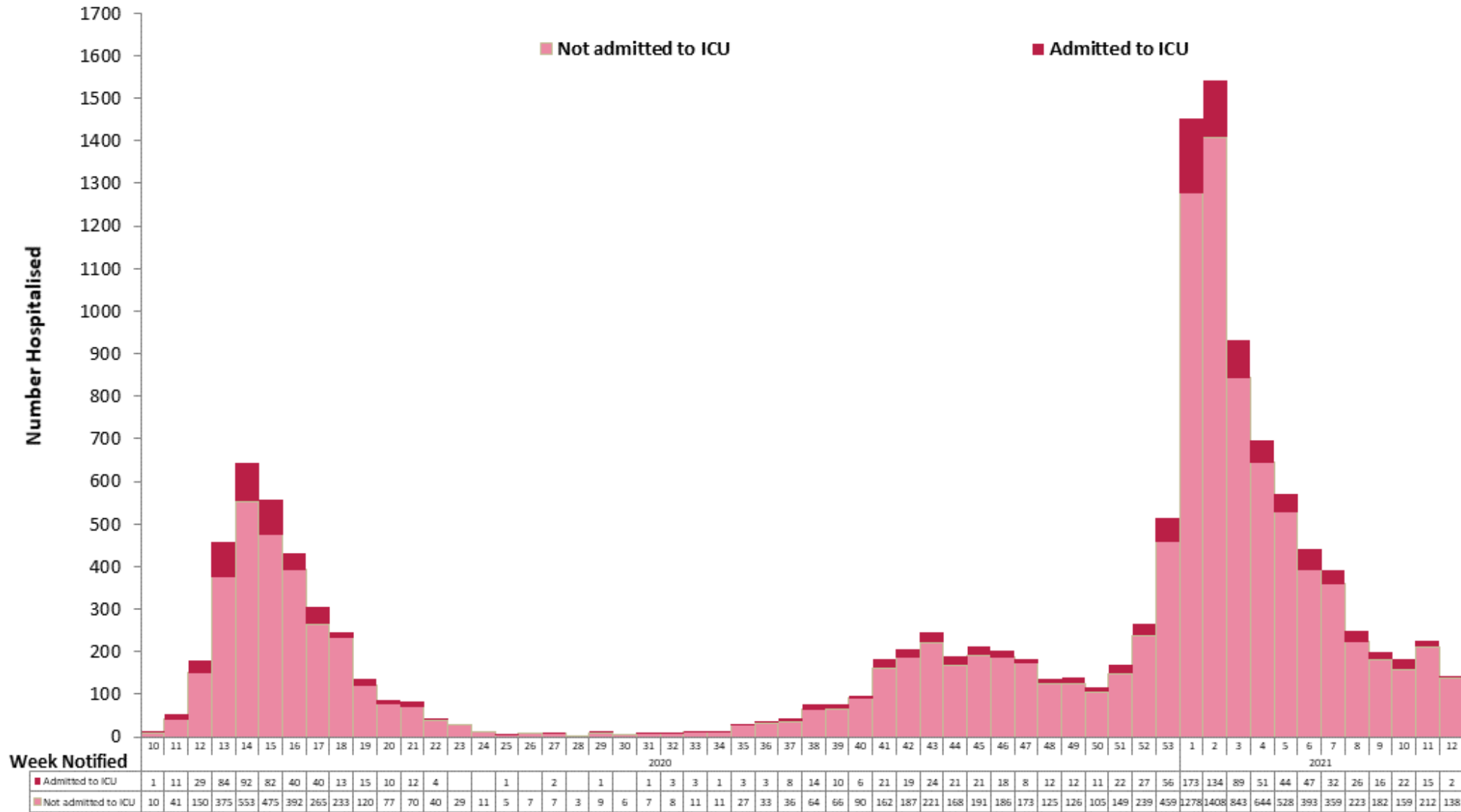


Figure 14: Number of hospitalised COVID-19 cases based on ICU admission status in Ireland between week 10, 2020 and week 12, 2021*

*Please note that the most recent weeks may not yet reflect all admissions.

Deaths among COVID-19 cases

	Number	Percent
Total number of deaths	4,667	
confirmed	4,401	94.3
probable	95	2.0
possible	171	3.7
Number hospitalised who died	2,430	52.1
admitted to ICU who died	422	9.0
not admitted to ICU who died	2,008	43.0
Number of imported cases who died	5	0.1
Number of HCWs who died	15	0.3
Number with underlying conditions who died	4,041	86.6
Males who died	2,459	52.7
M:F ratio	1.11	
Median age (years)	83	
Mean age (years)	81	
Age range (years)	0 - 105	

Table 3: Summary of deaths in all COVID-19 cases notified in Ireland between week 10, 2020 and week 12, 2021

Age group (years)	Female	Male	Total	Percent
<45 yrs	24	26	50	1.1
45-54 yrs	27	49	76	1.6
55-64 yrs	86	156	242	5.2
65-74 yrs	254	466	720	15.4
75-84 yrs	676	909	1,585	34.0
85+ yrs	1,139	853	1,992	42.7
Unknown	2		2	
Total	2,208	2,459	4,667	100.0
Percent	47.38	52.62		

Table 4: Number of deaths in all COVID-19 cases by sex and age group notified in Ireland between week 10, 2020 and week 12, 2021

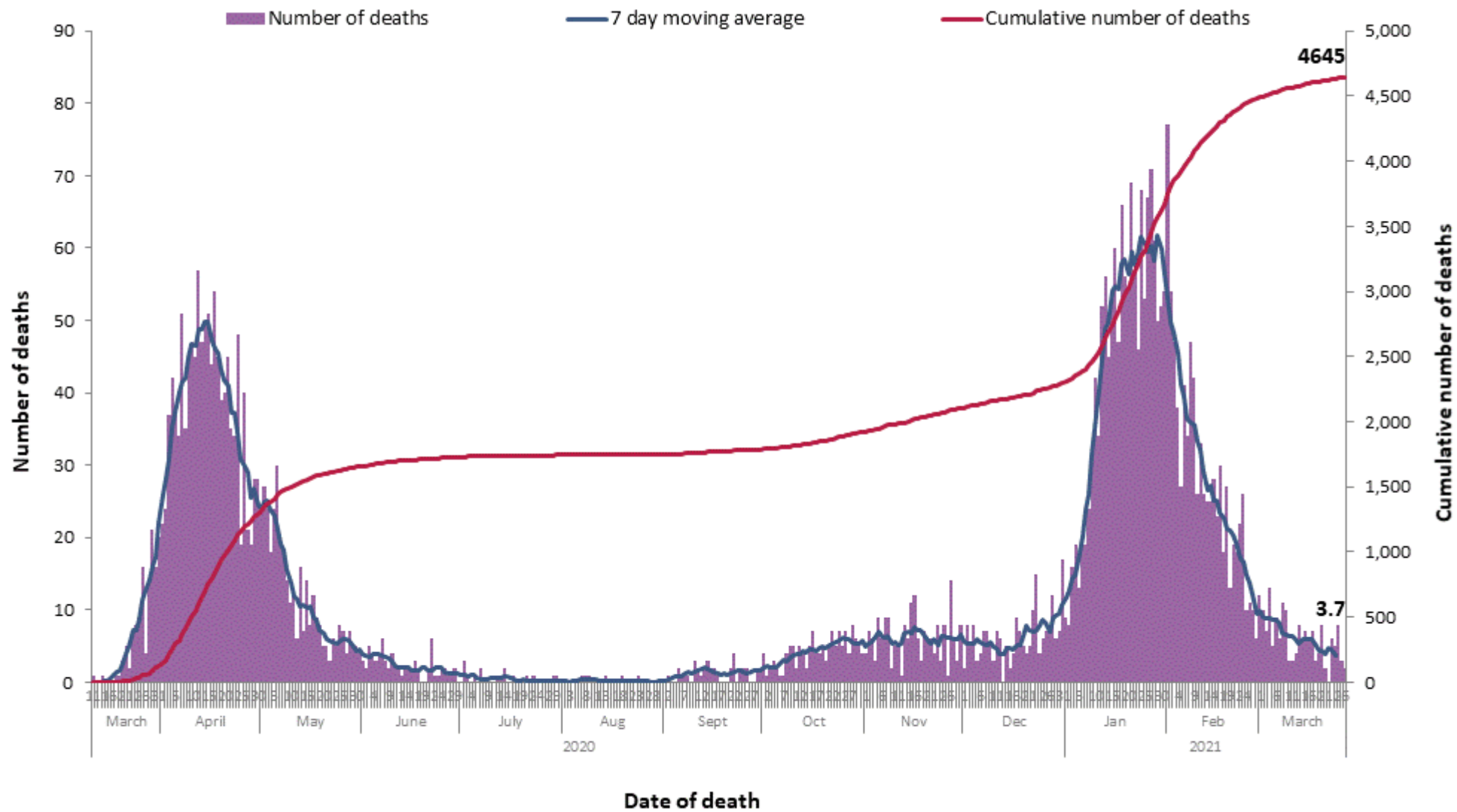


Figure 15a: Daily and 7-day moving average number of deaths among COVID-19 cases notified in Ireland by date of death and cumulative total between week 10, 2020 and week 12, 2021

* Date of death is not yet available for 22 cases

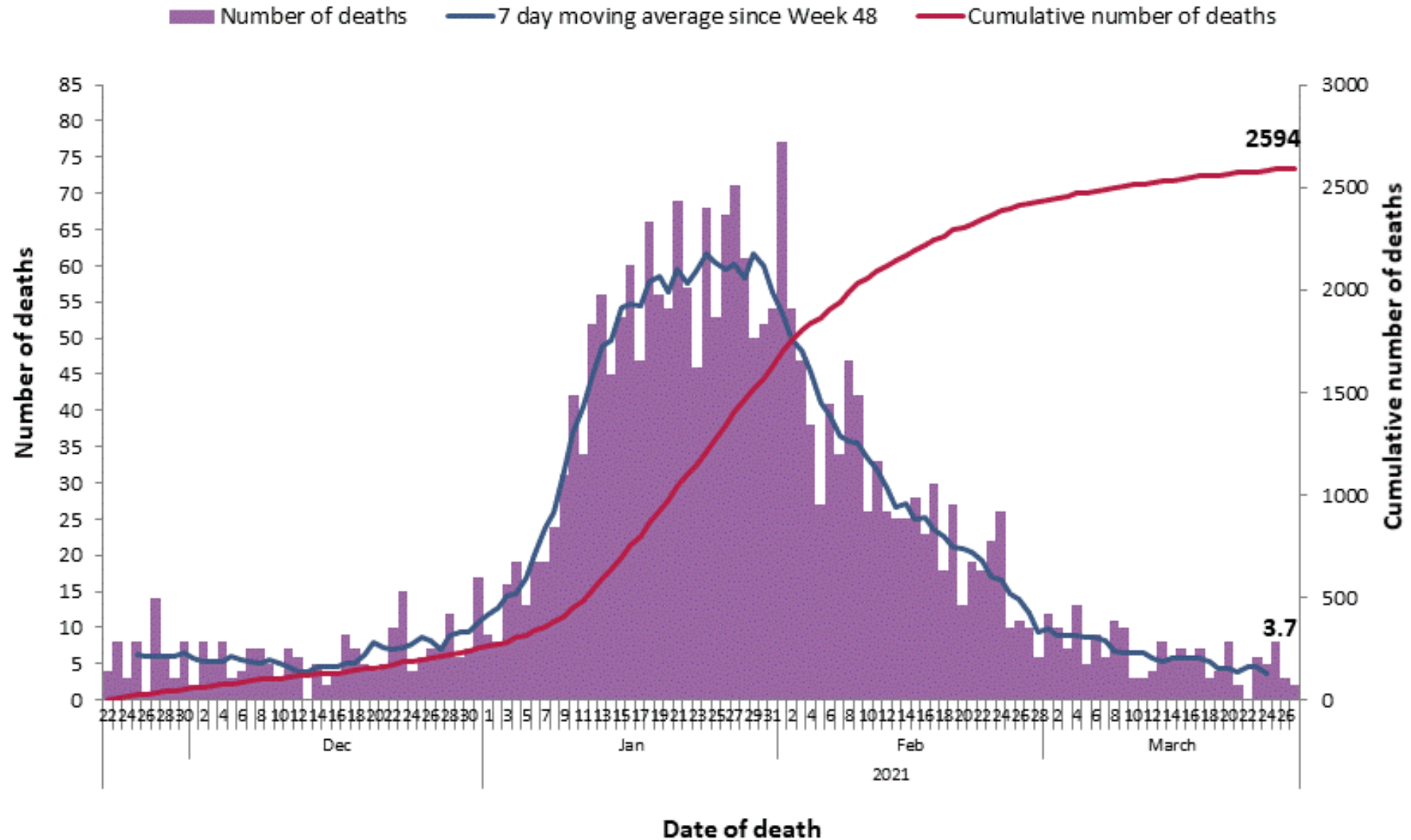


Figure 15b: Daily and 7-day moving average number of deaths among COVID-19 cases notified in Ireland by date of death and cumulative total, between week 48, 2020 and week 11, 2021

Please note: a lag in time between reporting of deaths and data extraction is expected and as such most recent dates will not yet reflect all deaths on that date

Please refer to the Health Protection Surveillance (HPSC) website for specific reports on

- [14 Day report](#) epidemiology of COVID-19 in Ireland
- [Outbreaks/clusters](#) in Ireland COVID-19 weekly report
- [Underlying Conditions](#) in confirmed cases of COVID-19 in Ireland weekly report
- [Healthcare Workers](#) in Ireland COVID-19 weekly report

Acknowledgements

Sincere thanks are extended to all those who are participating in the collection of data and reporting of data used in these reports. This includes the HSE COVID-19 Contact Management Programme (CMP), staff in ICU units, notifying clinicians, laboratory staff, public health doctors, nurses, surveillance scientists, microbiologists and administrative staff.

Report prepared by COVID-19 Epidemiology Team, HPSC

Technical Notes

1. Data Source

- Data are based on statutory notifications and were extracted from Computerised Infectious Disease Reporting (CIDR) system. Data are provisional and subject to ongoing review, validation and update. As a result, figures in this report may differ from previously published figures.
- Slides 25 and 26 include data reported from the Irish sentinel GP network.

2. Epidemiological date

- Epidemiological date is based on the earliest of dates available on the case and taken from date of onset of symptoms, date of diagnosis, laboratory specimen collection date, laboratory received date, laboratory reported date or event creation date/notification date on CIDR. By using this date rather than event creation/ notification date, adjusts for any delays in testing/notification.

3. Population data

- Population data were taken from Census 2016. Data were aggregated into the following age groups for the analysis: 0-4 years, 5-12 years, 13-18 years, 19-24 years, 25-34 years, 35-44 years, 45-54 years, 55-64 years, 65-74 years, 75-84 years and ≥ 85 years.

Appendix 1: Epidemiological weeks, start and end dates, 2021

- Note: Epidemiological week is from Sunday to Saturday in line with the [Infectious Disease Regulations 1981](#) and subsequent amendments

Year	Week	Start date	End date
2021	1	03/01/2021	09/01/2021
2021	2	10/01/2021	16/01/2021
2021	3	17/01/2021	23/01/2021
2021	4	24/01/2021	30/01/2021
2021	5	31/01/2021	06/02/2021
2021	6	07/02/2021	13/02/2021
2021	7	14/02/2021	20/02/2021
2021	8	21/02/2021	27/02/2021
2021	9	28/02/2021	06/03/2021
2021	10	07/03/2021	13/03/2021
2021	11	14/03/2021	20/03/2021
2021	12	21/03/2021	27/03/2021
2021	13	28/03/2021	03/04/2021
2021	14	04/04/2021	10/04/2021
2021	15	11/04/2021	17/04/2021
2021	16	18/04/2021	24/04/2021
2021	17	25/04/2021	01/05/2021
2021	18	02/05/2021	08/05/2021
2021	19	09/05/2021	15/05/2021
2021	20	16/05/2021	22/05/2021
2021	21	23/05/2021	29/05/2021
2021	22	30/05/2021	05/06/2021
2021	23	06/06/2021	12/06/2021
2021	24	13/06/2021	19/06/2021
2021	25	20/06/2021	26/06/2021
2021	26	27/06/2021	03/07/2021

Year	Week	Start date	End date
2021	27	04/07/2021	10/07/2021
2021	28	11/07/2021	17/07/2021
2021	29	18/07/2021	24/07/2021
2021	30	25/07/2021	31/07/2021
2021	31	01/08/2021	07/08/2021
2021	32	08/08/2021	14/08/2021
2021	33	15/08/2021	21/08/2021
2021	34	22/08/2021	28/08/2021
2021	35	29/08/2021	04/09/2021
2021	36	05/09/2021	11/09/2021
2021	37	12/09/2021	18/09/2021
2021	38	19/09/2021	25/09/2021
2021	39	26/09/2021	02/10/2021
2021	40	03/10/2021	09/10/2021
2021	41	10/10/2021	16/10/2021
2021	42	17/10/2021	23/10/2021
2021	43	24/10/2021	30/10/2021
2021	44	31/10/2021	06/11/2021
2021	45	07/11/2021	13/11/2021
2021	46	14/11/2021	20/11/2021
2021	47	21/11/2021	27/11/2021
2021	48	28/11/2021	04/12/2021
2021	49	05/12/2021	11/12/2021
2021	50	12/12/2021	18/12/2021
2021	51	19/12/2021	25/12/2021
2021	52	26/12/2021	01/01/2022