



Weekly Report on the Epidemiology of COVID-19 in Ireland

Week 16, 2021

Health Protection Surveillance Centre, HPSC

COVID-19 Epidemiology Team, 26/04/2021

Please note:

- The epidemiological weeks in this report, run from Sunday to Saturday. Please refer to the [HPSC website](#) for a complete list of epidemiological weeks with start and end dates for 2020/2021.
- Reference dates:
 - Week 16, 2021 (18th April 2021 to 24th April 2021)
 - Week 48, 2020 (22nd to 28th November 2020)
 - Week 10, 2020 (1st to 7th March 2020) – The beginning of the pandemic in Ireland
- Data for this report were extracted from Computerised Infectious Disease Reporting (CIDR) system on 26/04/2021 and are provisional and subject to ongoing review, validation and update. As a result, figures in this report may differ from previously published figures.
- **Note:** At the end of week 53, 2020 a significant number of cases were awaiting processing, as a result the number of cases reported in week 53, 2020 is reduced and the number of cases reported in week 1, 2020 is inflated, when data are presented by notification date

Summary characteristics of COVID-19 cases notified in Ireland



	Total (week 10, 2020- week 16, 2021)		Week 16, 2021	
	Number	Percent	Number	Percent
Total number of confirmed cases	246,632		3,128	
Incidence rate of confirmed cases per 100,000 population	5179.3		65.7	
Number of cases hospitalised	14,130	5.7	106	3.4
Number of cases admitted to ICU	1,495	0.6	<5*	0.1
Number of deaths among confirmed cases	4,608	1.9	<5*	0.0
Case fatality ratio (CFR %)	1.9		0.03	
Incidence rate of confirmed deaths per 100,000 population	96.8		0.02	
Number of cases associated with clusters	77,503	31.4	652	20.8
Number of imported cases	1,581	0.6	17	0.5
Number of cases in healthcare workers	28,557	11.6	78	2.5
Males	117,868	47.8	1,647	52.7
Females	128,672	52.2	1,476	47.2
M:F ratio	0.92		1.12	
Median (years)	37		31	
Mean age (years)	39		32	
Age range (years)	0 - 108		0 - 94	

** The number of cases hospitalised and admitted to ICU described in the above table relate only to COVID-19 cases who were notified during this reporting period, and where the outcome is known at the time of reporting. It does not reflect all hospitalisations and ICU admissions related to COVID-19 which occurred during the period covered by the report. It also does not reflect the final number of cases hospitalised or admitted to ICU for these cases notified during this period as the outcome may not yet have occurred, or is yet to be notified*

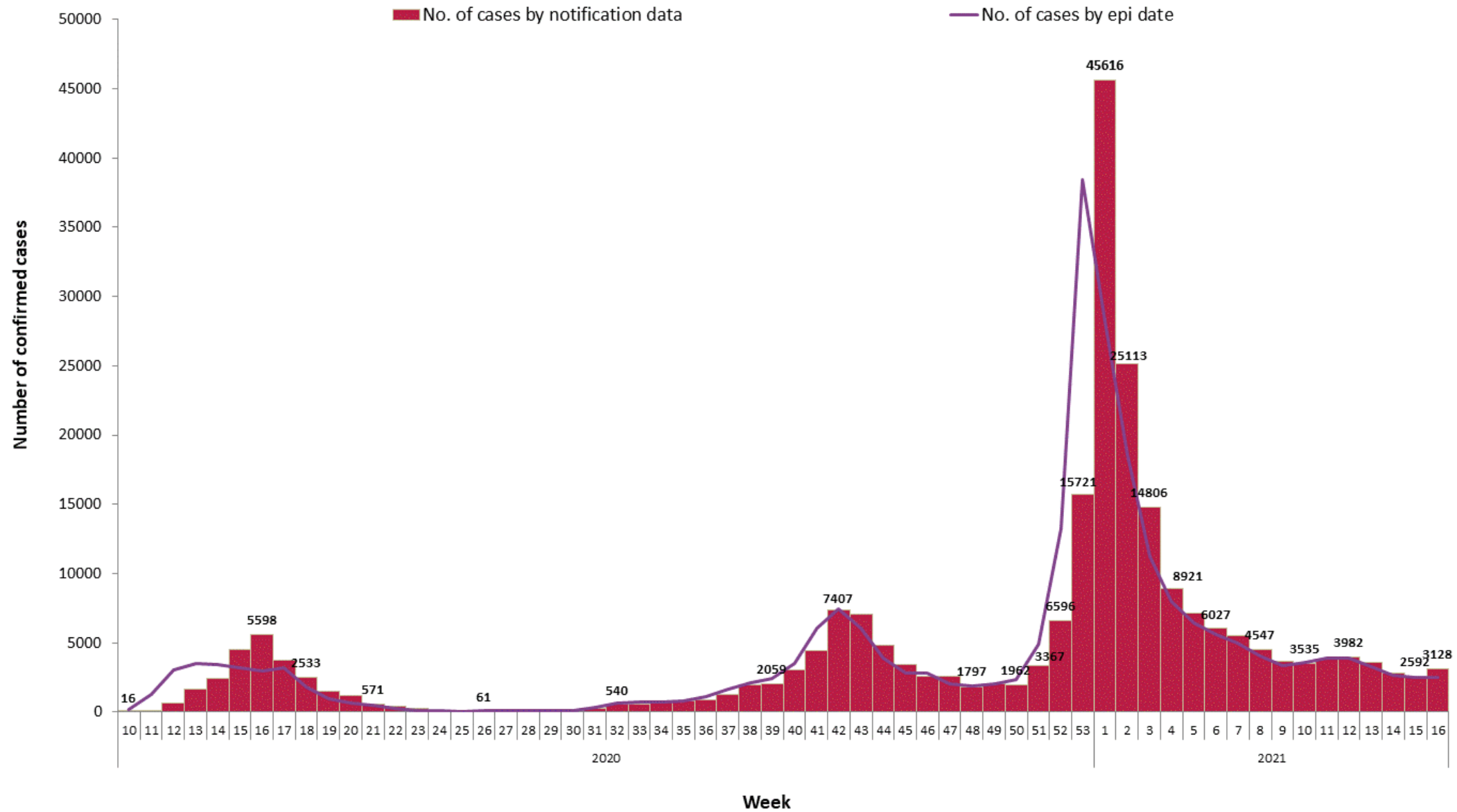


Figure 1a: Number of confirmed COVID-19 cases by notification week and [epidemiological date](#) in Ireland between week 8, 2020 and week 16, 2021

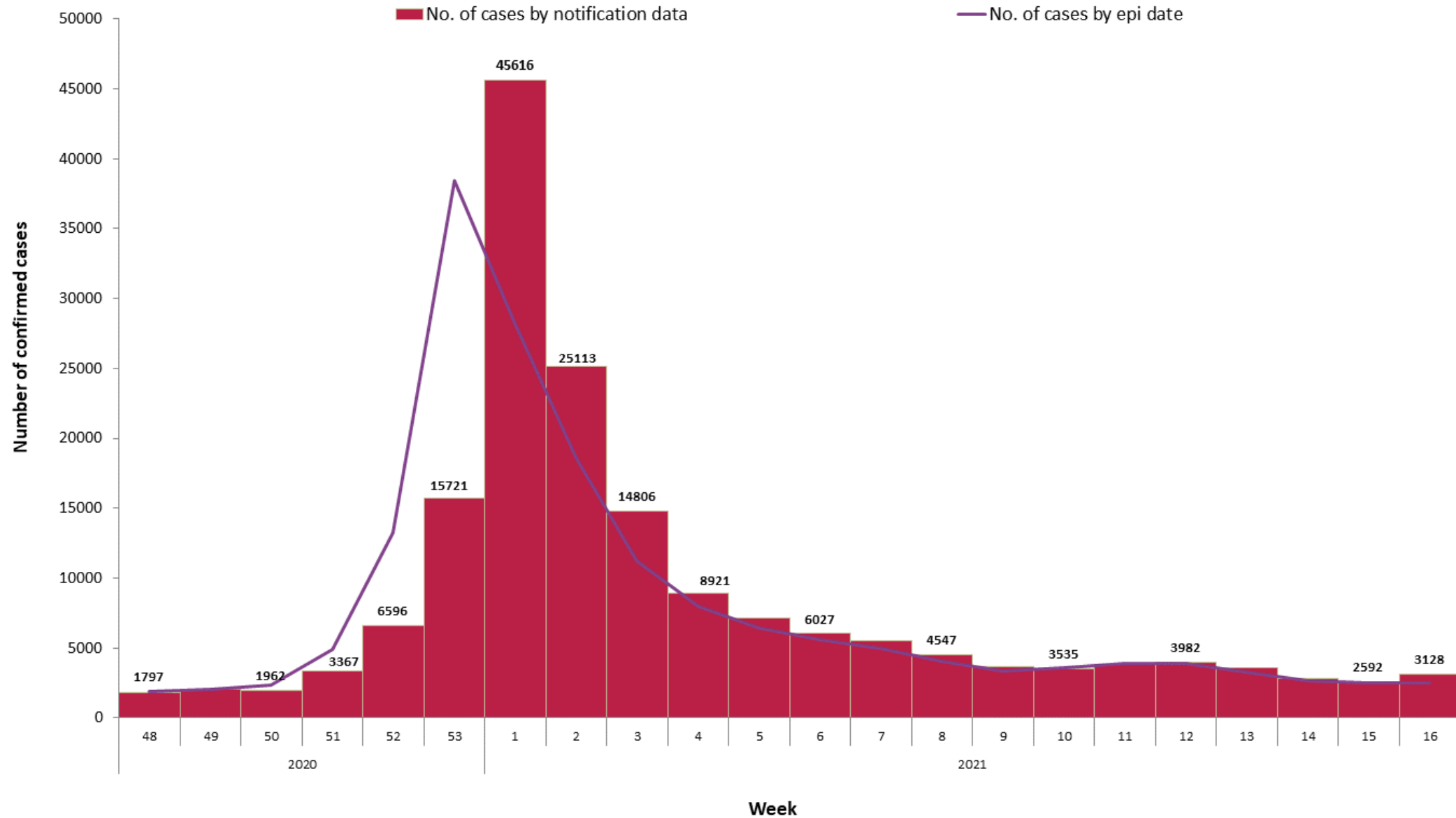


Figure 1b: Number of confirmed COVID-19 cases by notification week and [epidemiological date](#) in Ireland between week 48, 2020 and week 16, 2021

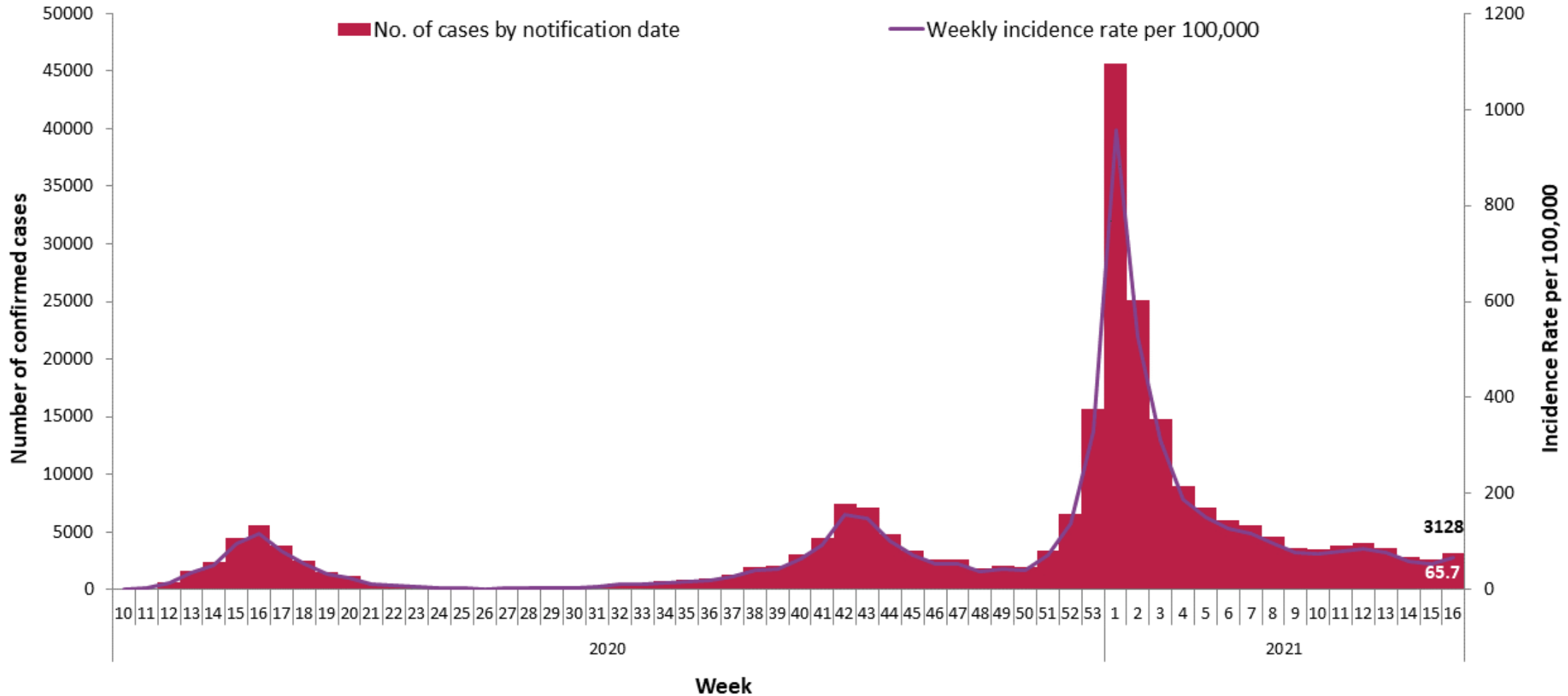


Figure 2: Number of confirmed COVID-19 cases by notification week and weekly incidence rate per 100,000 population in Ireland between week 10, 2020 and week 16, 2021

Population data were taken from Census 2016

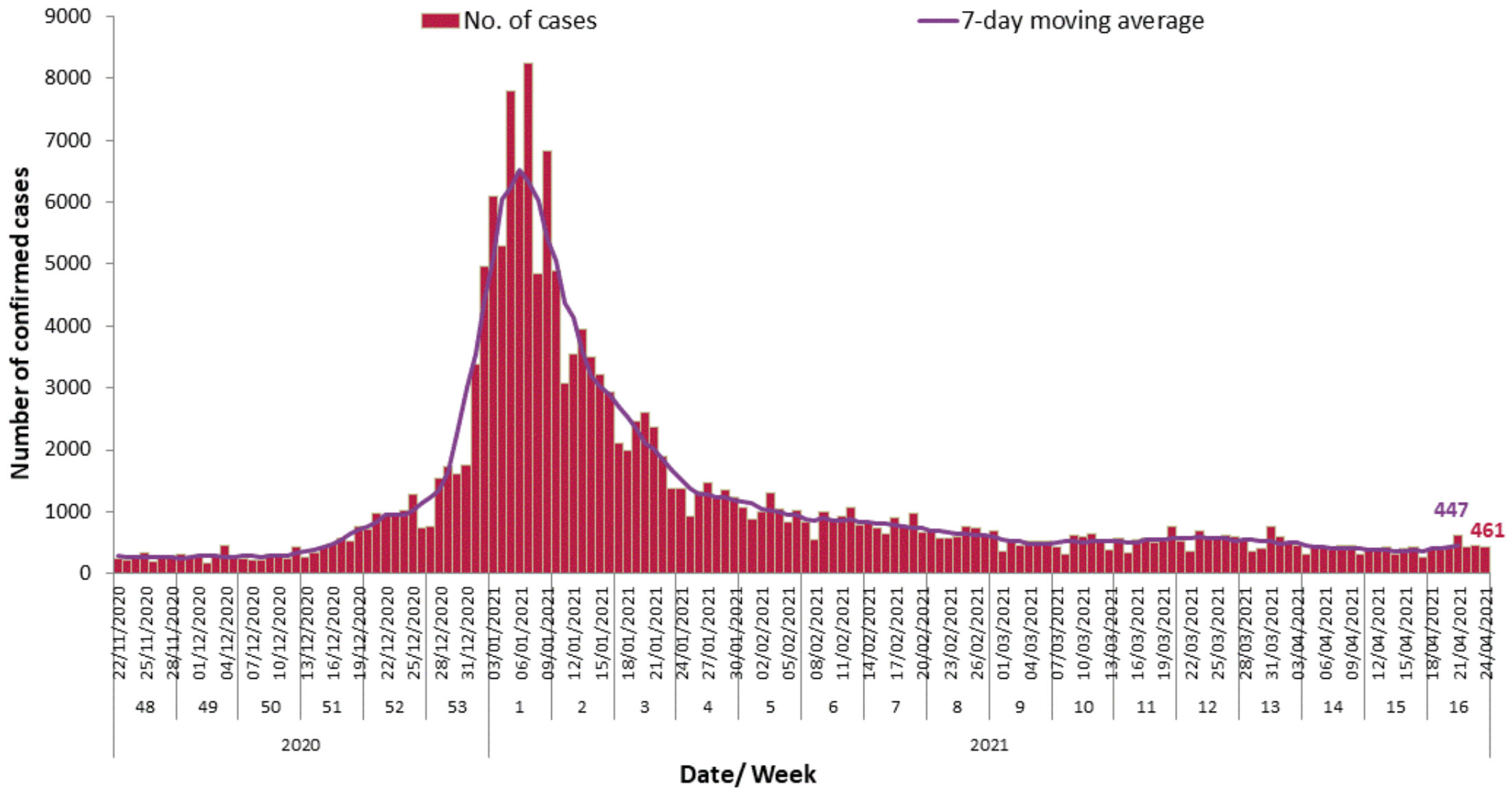


Figure 3: Number of confirmed COVID-19 cases, and 7-day moving average, by notification date in Ireland between week 48, 2020 and week 16, 2021

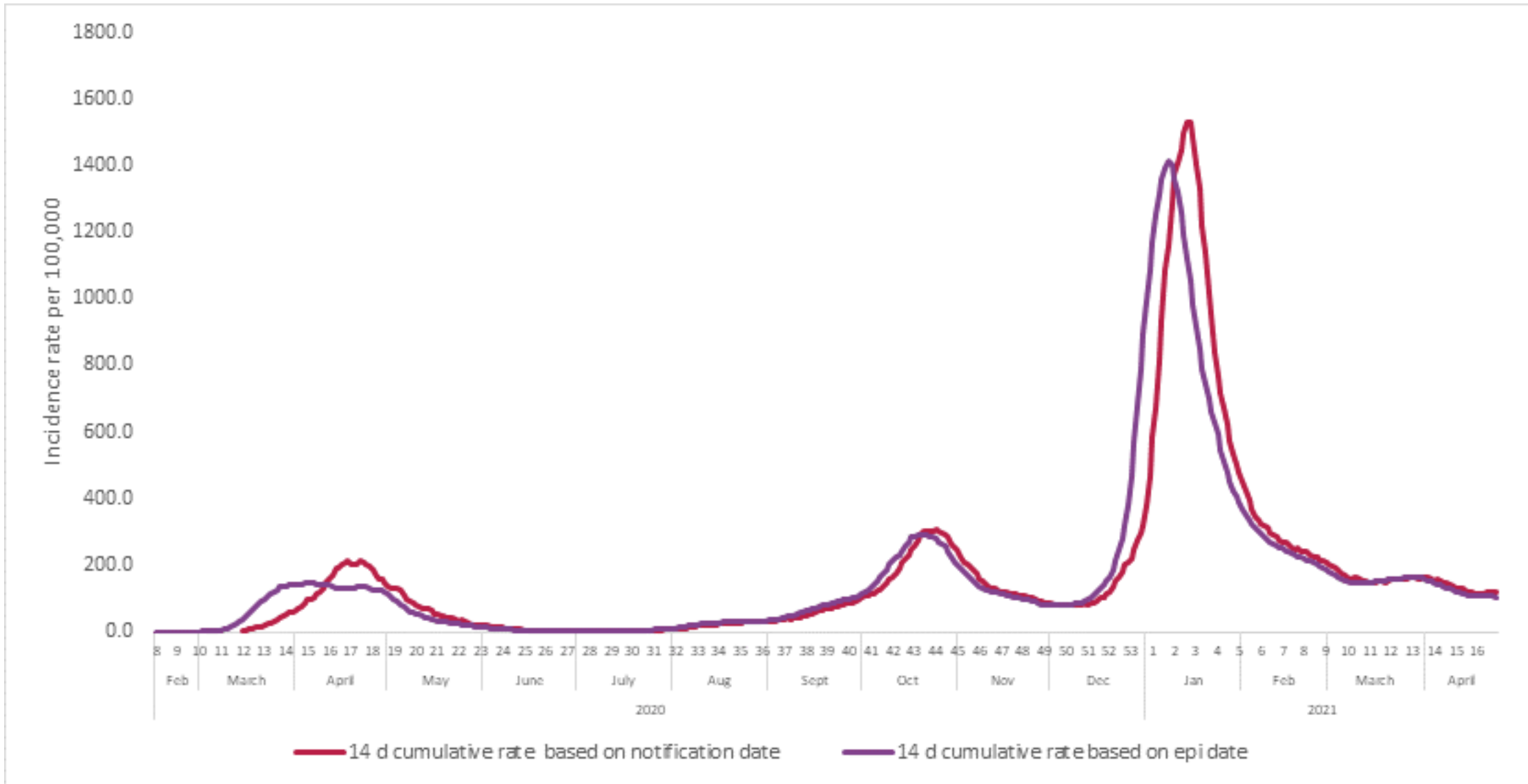


Figure 4a : Cumulative 14-day incidence rate of confirmed COVID-19 cases per 100,000 population notified in Ireland by notification and [epidemiological date](#) between week 8, 2020 and week 16, 2021

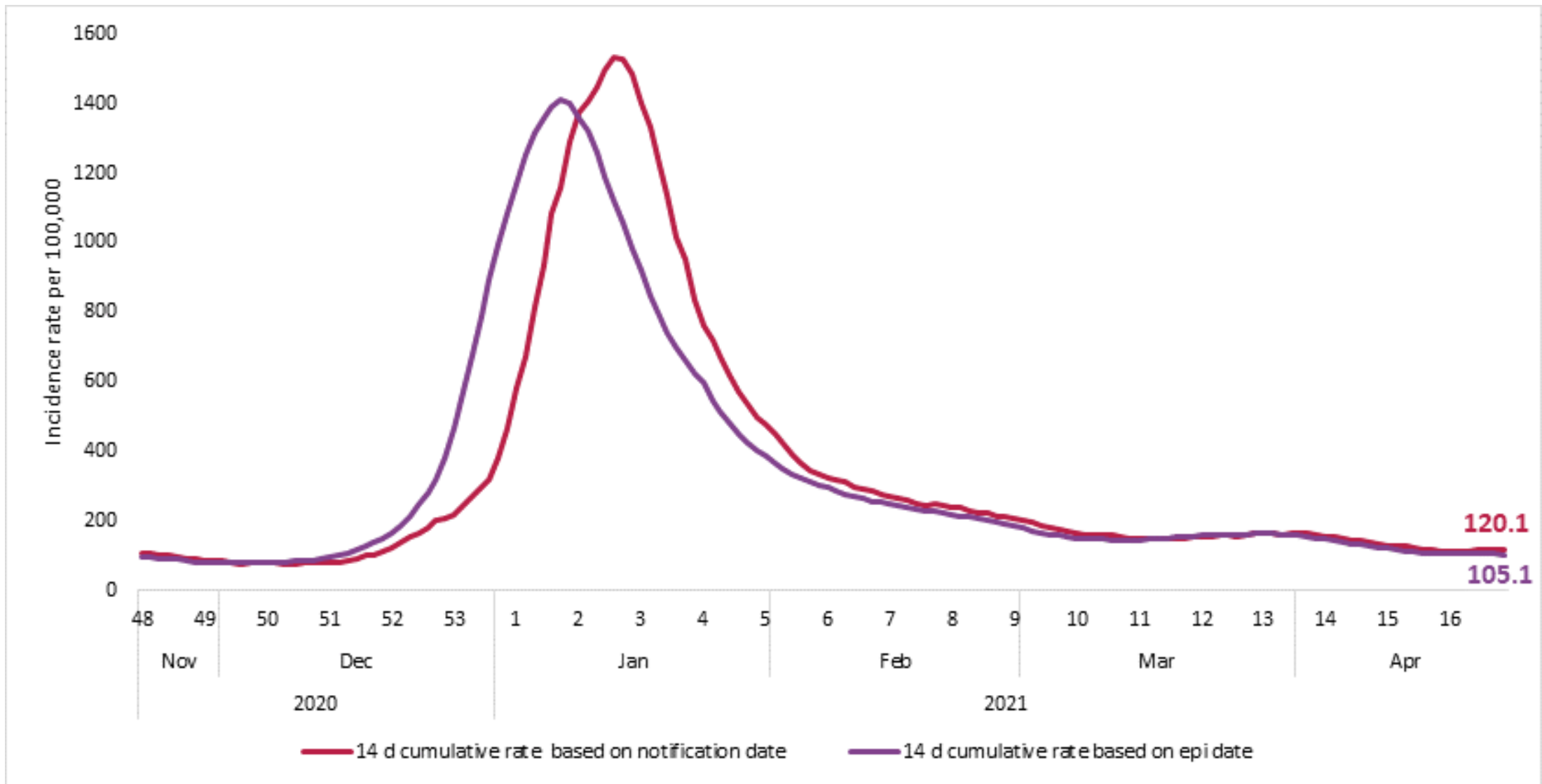


Figure 4b: Cumulative 14-day incidence rate of confirmed COVID-19 cases per 100,000 population notified in Ireland by notification and [epidemiological date](#) between week 48, 2020 and week 16, 2021

Table 1: Characteristics of confirmed COVID-19 cases notified in Ireland during week 16, 2021

Characteristic		Week 16	Percent
Total number of confirmed cases		3,128	100
Sex	Male:Female ratio	1.12	
	Male	1,647	52.7
	Female	1,476	47.2
	Unknown	5	0.2
Age	Mean age (years)	31	
	Median age (years)	32	
	Age range (years)	0 - 94	
	0-4 yrs	178	5.7
	5-12 yrs	350	11.2
	13-18 yrs	347	11.1
	19-24 yrs	351	11.2
	25-34 yrs	527	16.8
	35-44 yrs	522	16.7
	45-54 yrs	433	13.8
	55-64 yrs	240	7.7
	65-74 yrs	127	4.1
	75-84 yrs	36	1.2
	85+ yrs	17	0.5
Symptomatic*	Yes	1,616	51.7
	No	721	23.0
	Unknown	791	25.3

*Symptom status is recorded at the time of test and is not updated; therefore, a proportion of the asymptomatic cases may subsequently develop symptoms however this will not be captured in the data

Figure 5a: Cumulative age- and sex-specific incidence rates of confirmed COVID-19 cases per 100,000 population notified in Ireland between week 10, 2020 and week 16, 2021

(excluding 41 cases for whom age is unknown, 92 cases for whom sex is unknown and one case for whom both are unknown)

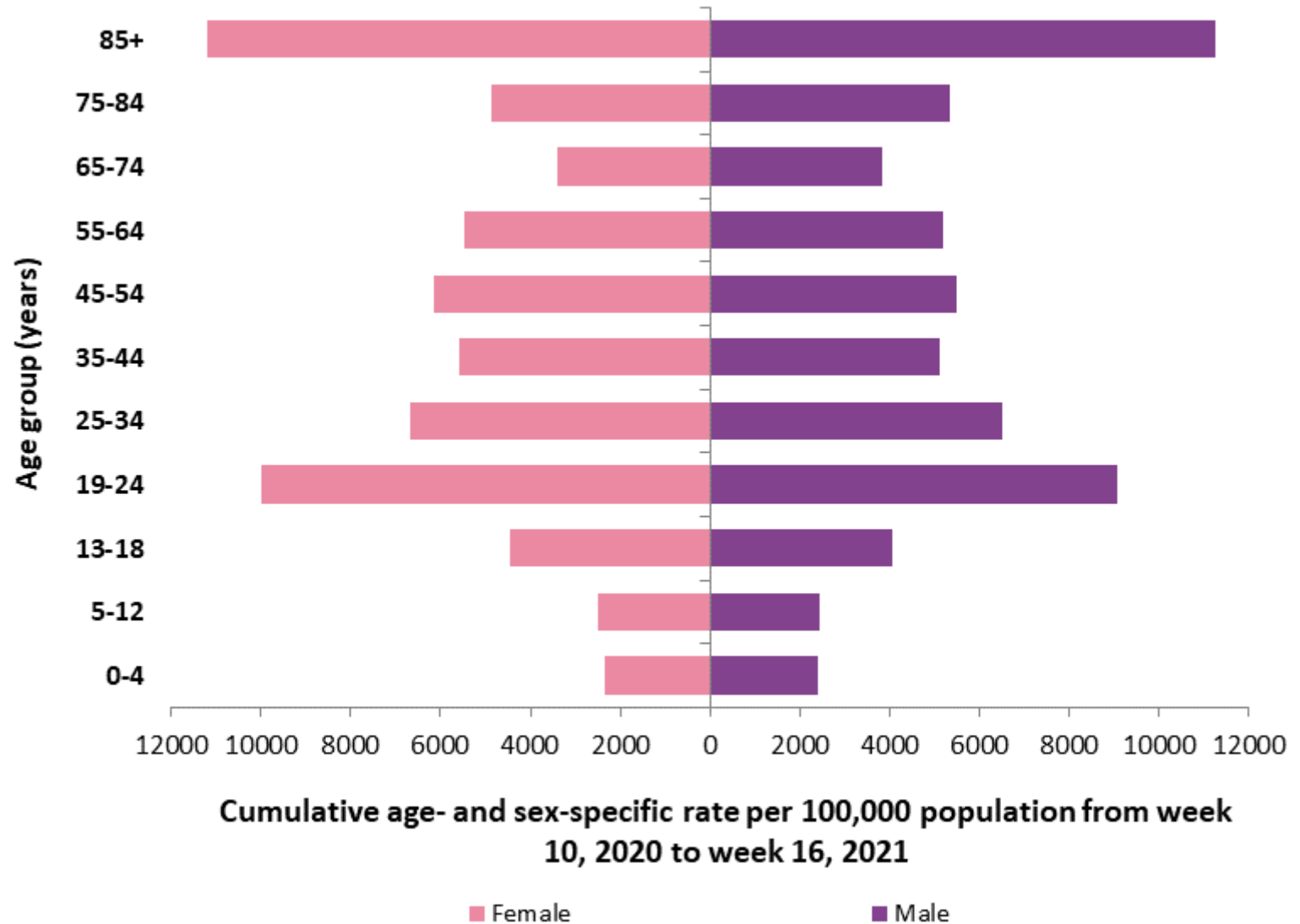


Figure 5b: Cumulative age- and sex-specific incidence rates of confirmed COVID-19 cases per 100,000 population notified in Ireland between week 48, 2020 and week 16, 2021

(excluding 17 cases for whom age is unknown, and 79 cases for whom sex is unknown)

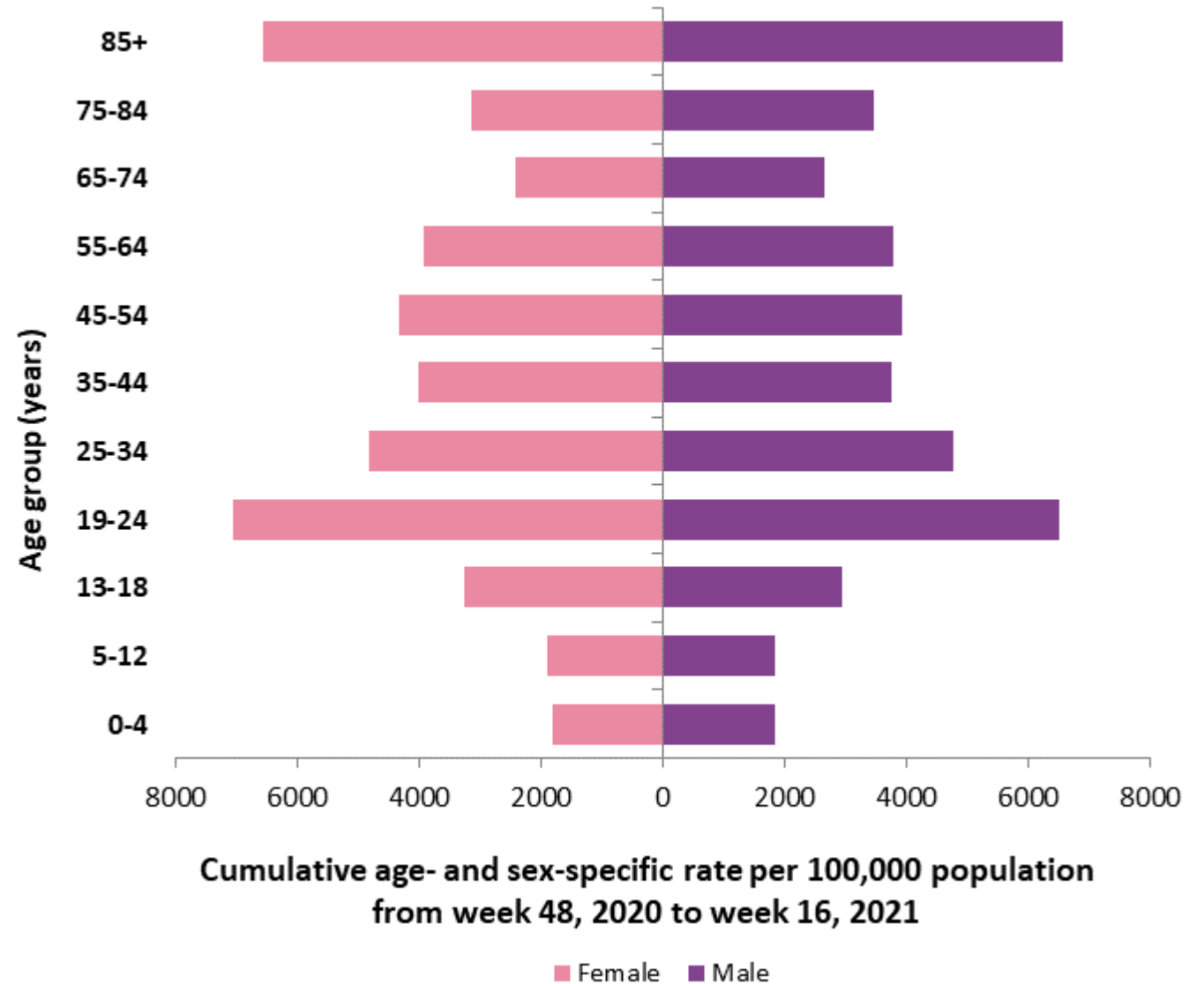
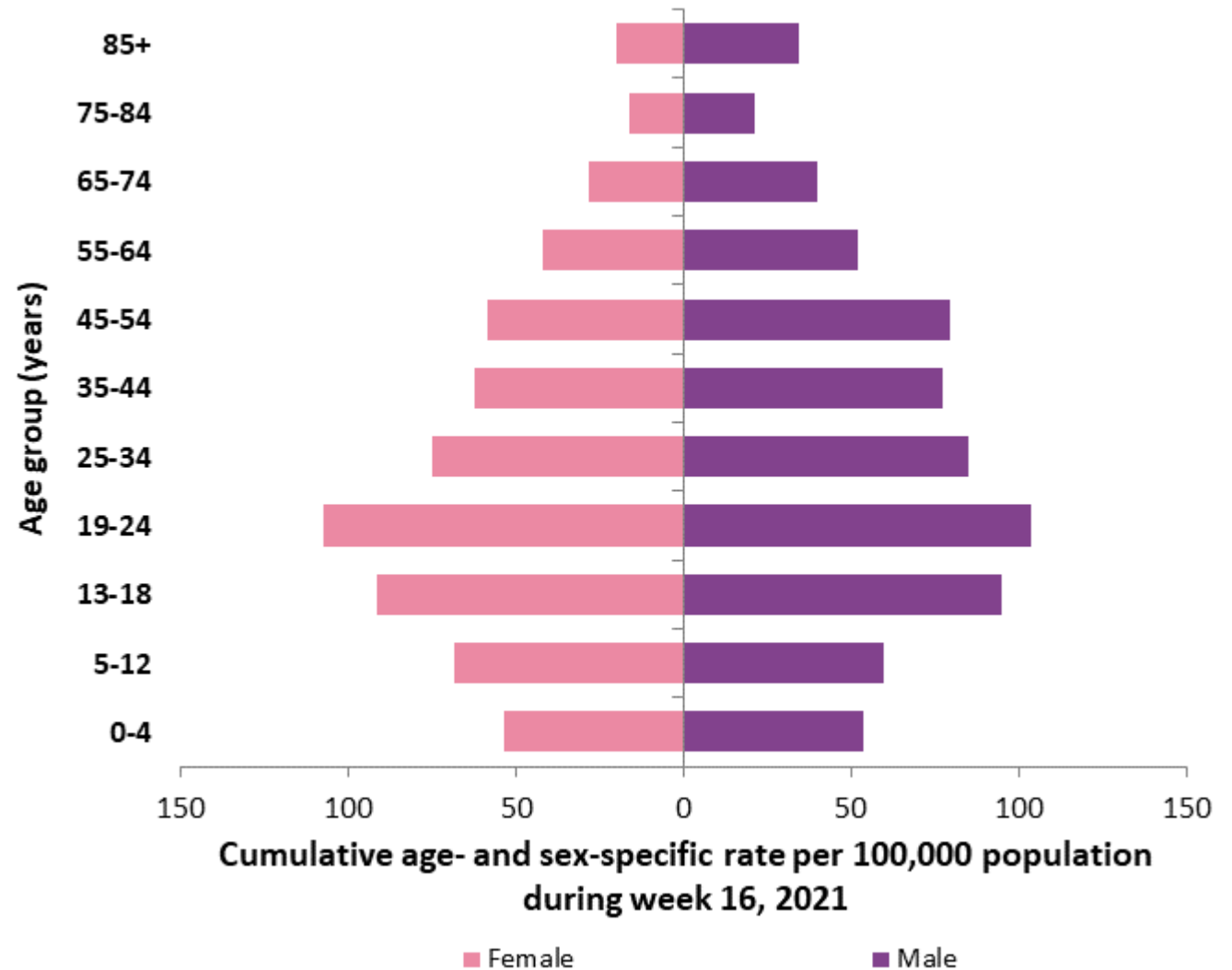


Figure 5c: Cumulative age- and sex-specific incidence rates of confirmed COVID-19 cases per 100,000 population notified in Ireland during week 16, 2021

(excluding 5 cases for whom sex is unknown)



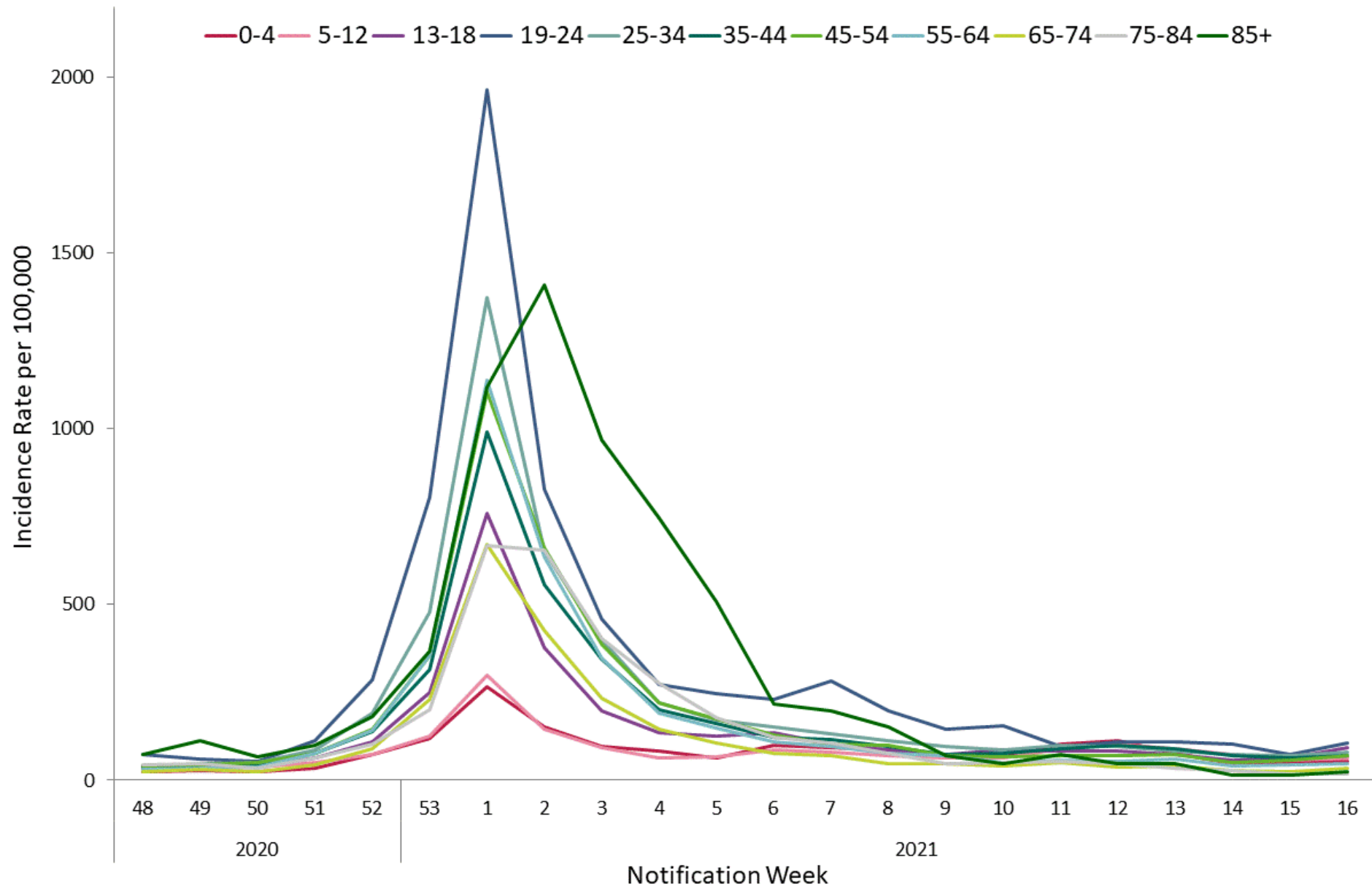


Figure 6a: Weekly age-specific incidence rates of confirmed COVID-19 cases per 100,000 population in Ireland between week 48, 2020 and week 16, 2021

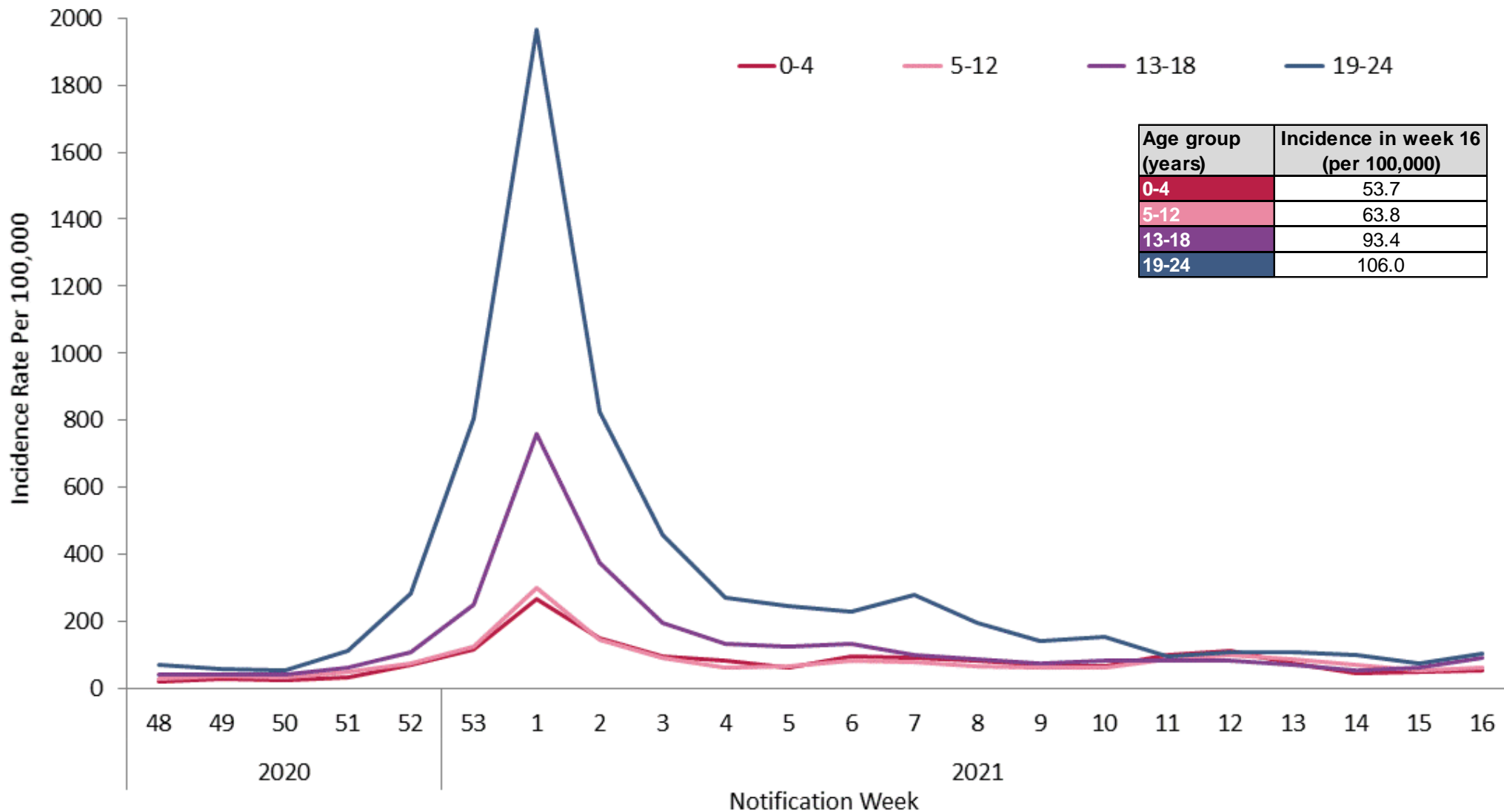


Figure 6b: Weekly age-specific incidence rates of confirmed COVID-19 cases per 100,000 population in Ireland between week 48, 2020 and week 16, 2021

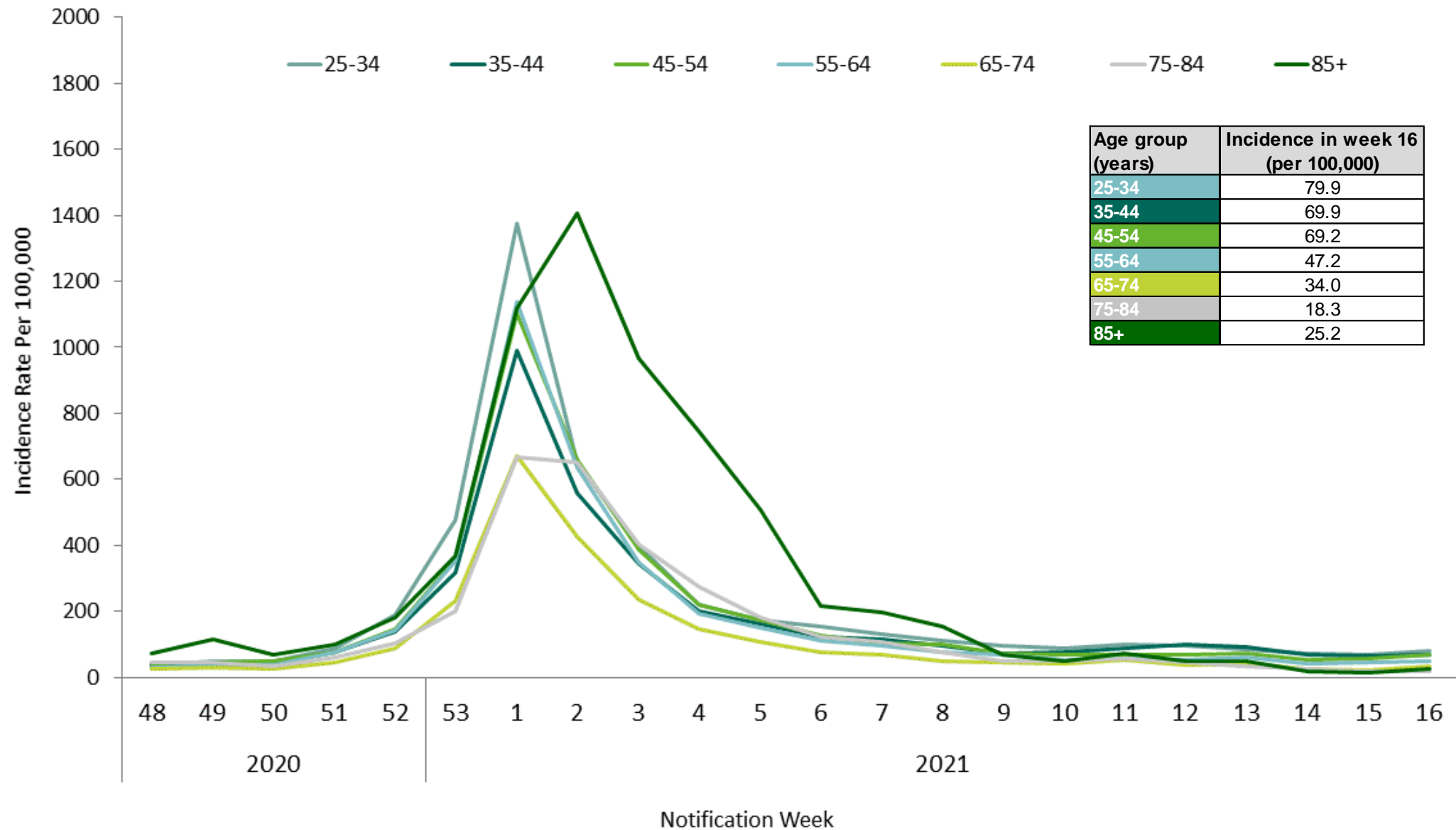


Figure 6c: Weekly age-specific incidence rates of confirmed COVID-19 cases per 100,000 population in Ireland between week 48, 2020 and week 16, 2021

		Age Range											
		0-4	5-12	13-18	19-24	25-34	35-44	45-54	55-64	65-74	75-84	85+	National
2020	48	23.2	29.7	40.9	72.2	39.0	37.1	39.6	30.5	24.1	44.8	74.0	37.7
	49	28.7	38.1	43.1	60.7	48.8	40.3	44.1	35.8	30.3	45.8	114.0	42.5
	50	24.7	36.5	40.9	55.3	50.3	41.6	49.0	37.3	24.9	33.6	68.1	41.2
	51	35.3	51.4	65.1	112.0	88.0	75.8	75.2	75.3	44.2	62.1	100.7	70.7
	52	72.4	74.9	110.9	286.2	190.0	139.8	145.8	141.1	88.9	102.8	182.1	138.5
	53	117.9	125.4	249.7	806.4	478.5	316.2	355.1	352.7	231.3	201.0	367.1	330.1
2021	Notification Week												
	1	266.4	299.8	759.7	1964.3	1374.3	991.6	1104.6	1139.4	670.9	669.2	1117.6	957.9
	2	152.6	146.0	376.2	828.5	652.1	557.1	660.5	635.8	425.4	653.4	1407.7	527.4
	3	97.1	91.5	197.0	458.6	398.5	345.6	387.4	349.1	233.7	402.5	968.1	310.9
	4	84.2	63.8	135.1	271.1	221.0	200.2	218.8	192.2	146.7	274.8	746.1	187.3
	5	64.9	68.2	124.3	246.7	171.5	161.7	173.2	149.1	106.6	179.1	506.3	150.0
	6	98.3	85.3	135.1	230.7	152.4	124.0	127.6	110.0	77.6	121.6	217.6	126.6
	7	91.7	79.5	103.1	281.7	131.8	115.8	104.0	95.1	68.8	106.9	196.9	116.0
	8	86.0	68.7	87.5	198.4	112.8	95.3	99.2	76.8	48.2	76.8	152.5	95.5
	9	70.9	62.7	74.3	144.9	96.0	73.1	70.9	69.6	46.3	48.9	69.6	76.2
	10	66.4	64.2	85.0	153.7	87.8	77.8	68.2	51.9	42.0	49.9	47.4	74.2
	11	103.2	88.6	83.4	96.9	98.3	89.3	69.0	55.6	51.1	55.5	72.5	80.6
	12	113.7	102.8	84.0	109.9	96.3	100.7	70.0	53.2	39.1	46.3	47.4	83.6
	13	77.2	89.3	72.4	109.0	82.2	90.4	72.8	60.3	42.0	35.1	48.8	75.9
	14	48.6	72.7	56.2	103.3	72.2	69.1	51.3	41.5	26.8	26.5	16.3	58.8
	15	49.2	56.7	63.8	74.6	68.7	63.6	55.9	43.8	23.0	18.8	14.8	54.4
16	53.7	63.8	93.4	106.0	79.9	69.9	69.2	47.2	34.0	18.3	25.2	65.7	

Figure 7: Heat map of weekly age-specific incidence rates of confirmed COVID-19 cases per 100,000 population in Ireland between week 48, 2020 and week 16, 2021

COVID-19 cases in children 18 years and under by notification date

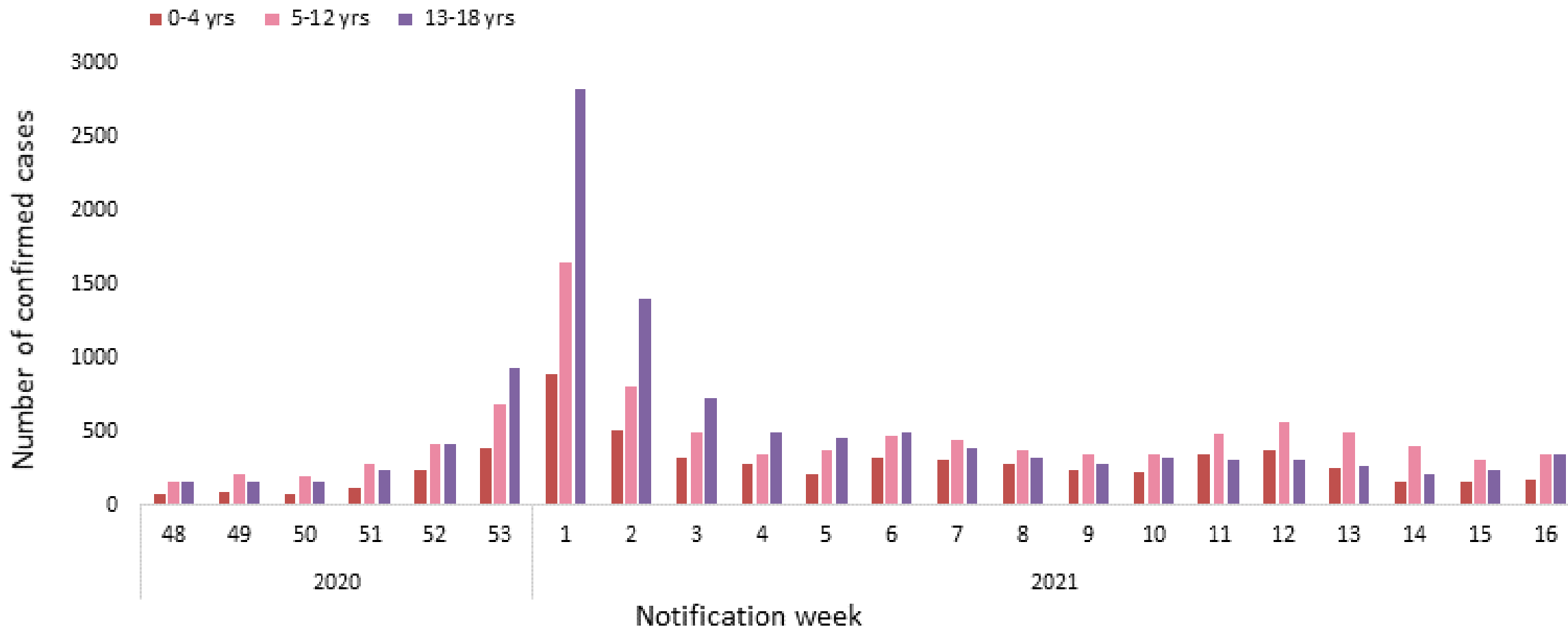


Figure 8: Weekly number of age-specific confirmed COVID-19 cases by notification week in Ireland between week 48, 2020 and week 16, 2021

COVID-19 incidence rate by HSE area in children 18 years and under

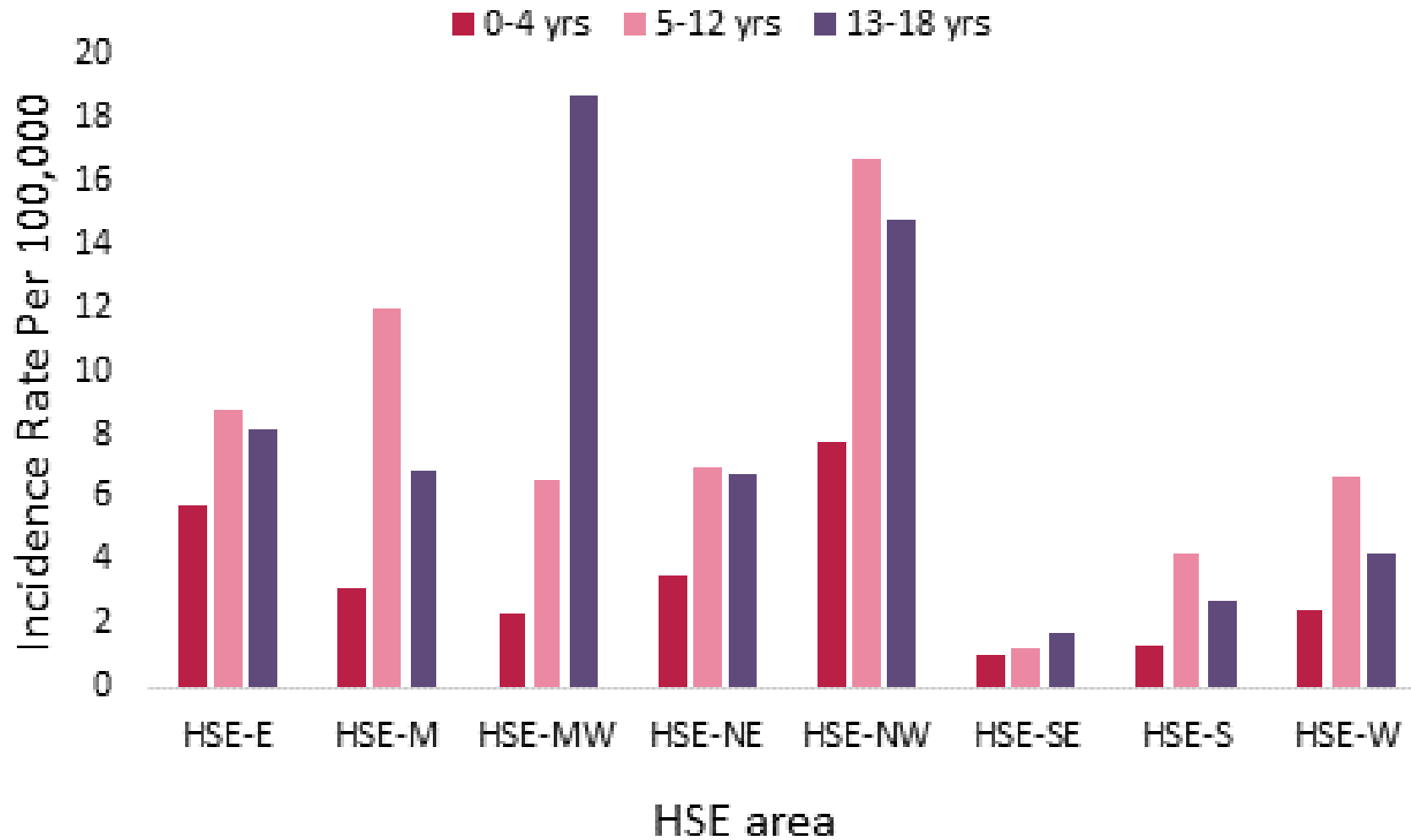


Figure 9: Age-specific incidence rates of confirmed COVID-19 cases per 100,000 population, by HSE area, notified in Ireland during week 16, 2021

Table 2: Characteristics of confirmed COVID-19 cases by county notified in Ireland, during week 16, 2021

County	Cases		M:F ratio	Median age	Incidence Rate per 100,000
	N	%		(years)	
Donegal	210	6.7	0.9	25	131.9
Kildare	256	8.2	1.1	32	115.1
Dublin	1341	42.9	1.1	32	99.5
Longford	40	1.3	1.2	39	97.9
Leitrim	31	1.0	1.6	21	96.7
Offaly	74	2.4	1.2	24	94.9
Tipperary	148	4.7	1.8	21	92.8
Westmeath	71	2.3	1.1	31	80.0
Meath	133	4.3	1.2	33	68.2
Limerick	125	4.0	0.7	28	64.1
Louth	78	2.5	1.0	35	60.5
Cavan	39	1.2	1.3	25	51.2
Mayo	60	1.9	1.1	30.5	46.0
Wicklow	65	2.1	1.4	37	45.6
Laois	38	1.2	1.4	33.5	44.9
Sligo	28	0.9	1.0	31.5	42.7
Galway	94	3.0	1.0	25	36.4
Carlow	19	0.6	0.7	43	33.4
Roscommon	19	0.6	1.1	40	29.4
Waterford	33	1.1	1.4	33	28.4
Cork	142	4.5	0.8	23	26.2
Clare	24	0.8	0.8	36.5	20.2
Monaghan	12	0.4	1.0	42.5	19.5
Wexford	21	0.7	1.6	26	14.0
Kilkenny	12	0.4	2.0	52	12.1
Kerry	15	0.5	1.5	55	10.2

		Carlow	Cavan	Clare	Cork	Donegal	Dublin	Galway	Kerry	Kildare	Kilkenny	Laois	Leitrim	Limerick	Longford	Louth	Mayo	Meath	Monaghan	Offaly	Roscommon	Sligo	Tipperary	Waterford	Westmeath	Wexford	Wicklow	National
2020	Notification Week 48	31.6	19.7	14.3	24.5	111.2	43.6	20.2	21.0	21.1	83.6	28.3	3.1	60.5	41.6	75.3	36.8	24.1	31.0	23.1	23.2	21.4	45.1	41.3	13.5	7.3	52.7	37.7
	Notification Week 49	72.0	40.7	19.4	13.4	112.4	50.9	31.0	12.2	27.4	86.7	26.0	12.5	79.5	44.0	83.0	43.7	25.1	97.7	34.6	24.8	15.3	44.5	21.5	13.5	12.0	68.1	42.5
	Notification Week 50	82.6	68.3	12.6	12.9	107.4	42.2	28.7	8.1	30.1	111.9	69.7	12.5	50.8	97.9	93.1	65.9	34.4	39.1	30.8	20.1	33.6	38.9	46.5	15.8	24.0	35.8	41.2
	Notification Week 51	110.7	106.3	14.3	38.9	154.5	81.8	23.3	99.5	55.3	84.7	105.1	12.5	99.5	46.5	144.3	50.6	74.3	86.3	34.6	21.7	59.5	27.0	59.4	28.2	143.6	31.6	70.7
	Notification Week 52	108.9	89.3	104.4	123.4	271.4	166.5	98.8	148.9	113.7	185.4	86.2	56.2	227.3	34.3	166.8	79.7	105.6	202.0	46.2	66.6	131.2	72.1	99.0	80.0	204.4	81.4	138.5
	Notification Week 53	242.4	506.7	396.4	282.4	553.4	276.3	275.5	299.2	164.9	305.3	333.0	287.1	613.1	340.1	775.9	491.2	371.2	858.5	310.4	313.0	497.4	197.4	233.3	247.8	281.2	118.7	330.1
2021	Notification Week 1	1082.0	976.7	990.6	1054.8	853.1	1196.9	454.2	761.0	806.3	851.5	540.8	424.4	1224.2	567.6	1430.7	669.7	768.0	1668.1	554.1	416.8	630.2	614.2	1301.5	451.7	1178.2	498.5	957.9
	Notification Week 2	669.2	447.6	471.3	527.6	532.1	561.2	630.1	281.0	398.2	314.4	429.8	149.8	641.9	178.6	811.6	970.8	457.8	1010.0	404.0	503.5	212.1	411.1	571.5	243.3	665.2	313.8	527.4
	Notification Week 3	426.8	347.9	193.6	273.0	294.0	371.8	251.9	156.4	307.4	153.2	238.5	137.3	310.9	212.9	451.6	350.9	318.4	659.8	311.7	147.2	216.7	245.7	395.1	169.0	393.4	221.9	310.9
	Notification Week 4	263.5	141.8	109.4	151.8	185.3	229.6	170.5	81.9	147.9	84.7	146.4	74.9	172.4	181.0	284.8	223.0	184.1	415.4	215.5	68.2	138.9	147.3	285.8	117.2	241.1	127.8	187.3
	Notification Week 5	187.9	116.8	75.7	120.1	128.1	181.5	163.9	71.1	152.8	72.6	160.6	84.3	140.6	127.2	184.7	155.5	163.6	347.0	136.0	62.0	112.9	73.3	207.4	121.7	209.7	108.1	150.0
	Notification Week 6	159.8	153.6	63.1	60.1	70.4	185.1	150.4	35.9	125.8	59.5	154.7	59.3	115.4	119.9	156.7	123.4	136.9	166.2	203.9	57.3	56.5	83.4	127.4	119.4	106.9	67.4	126.6
	Notification Week 7	89.6	112.9	80.8	37.2	80.4	157.0	180.2	12.9	144.7	48.4	147.6	96.7	139.0	173.7	135.0	136.4	111.3	164.5	221.9	48.0	45.8	109.7	136.9	100.3	64.1	50.6	116.0
	Notification Week 8	100.1	61.7	69.0	28.7	107.4	131.3	97.7	36.6	104.7	33.3	113.3	59.3	139.6	193.3	131.9	93.5	110.7	78.2	180.9	55.8	41.2	82.1	73.2	139.7	38.7	48.4	95.5
	Notification Week 9	58.0	48.6	55.5	27.6	53.4	116.7	54.3	27.8	73.7	30.2	62.6	21.8	72.9	220.2	105.5	69.7	109.2	52.1	166.8	58.9	32.0	62.7	38.7	102.5	34.7	49.1	76.2
	Notification Week 10	43.9	21.0	21.0	26.2	94.2	106.9	65.1	26.4	144.7	13.1	31.9	18.7	71.8	178.6	66.7	55.9	96.4	44.0	224.5	66.6	44.3	47.6	57.7	67.6	45.4	39.3	74.2
	Notification Week 11	84.3	65.6	36.2	19.9	116.8	121.6	70.1	26.4	107.0	25.2	56.7	21.8	44.1	115.0	66.7	16.1	120.5	24.4	179.6	85.2	54.9	103.4	77.5	68.7	77.5	52.0	80.6
	Notification Week 12	29.9	84.0	26.9	22.3	166.5	124.6	49.2	6.8	114.2	27.2	107.4	37.4	54.9	75.8	92.3	42.9	108.7	17.9	260.4	51.1	13.7	92.1	41.3	117.2	70.8	68.1	83.6
	Notification Week 13	26.3	99.8	24.4	34.4	85.4	117.3	43.8	18.3	105.6	9.1	137.0	28.1	39.0	75.8	72.9	50.6	99.5	52.1	193.7	51.1	10.7	52.6	25.8	146.4	54.8	51.3	75.9
	Notification Week 14	12.3	63.0	13.5	24.1	75.4	94.8	43.8	16.9	107.4	6.0	68.5	21.8	28.2	75.8	52.0	42.9	73.3	63.5	85.9	37.2	12.2	32.6	25.0	75.5	32.7	44.9	58.8
	Notification Week 15	49.2	61.7	27.8	13.8	128.1	75.8	40.3	24.4	91.2	15.1	67.3	46.8	55.4	71.0	47.3	39.8	71.3	40.7	110.3	41.8	4.6	25.7	43.0	55.2	25.4	32.3	54.4
	Notification Week 16	33.4	51.2	20.2	26.2	131.9	99.5	36.4	10.2	115.1	12.1	44.9	96.7	64.1	97.9	60.5	46.0	68.2	19.5	94.9	29.4	42.7	92.8	28.4	80.0	14.0	45.6	65.7

Figure 10: Heat map of weekly incidence rates of confirmed COVID-19 cases per 100,000 population, by county, notified in Ireland between week 48, 2020 and week 16, 2021

		HSE-E	HSE-M	HSE-MW	HSE-NE	HSE-NW	HSE-SE	HSE-S	HSE-W	National
2020	48	41.5	24.3	40.5	38.7	74.4	41.3	23.7	25.4	37.7
	49	49.3	27.4	50.6	53.7	74.8	43.7	13.2	33.8	42.5
	50	40.1	46.9	36.4	57.1	76.4	55.6	11.9	38.2	41.2
	51	74.2	54.7	59.7	101.0	112.0	89.2	51.8	30.9	70.7
	52	152.5	66.4	169.6	133.2	207.8	136.4	128.9	88.7	138.5
	53	248.7	302.1	482.6	572.6	504.0	246.1	286.0	343.0	330.1
2021	Notification Week 1	1088.1	521.0	1016.9	1106.8	745.1	1051.3	991.9	510.9	957.9
	2	519.4	331.2	550.9	629.1	402.4	528.9	474.8	710.2	527.4
	3	351.0	233.3	255.6	406.0	255.1	330.6	248.1	265.5	310.9
	4	210.5	160.8	154.8	236.6	159.0	202.2	136.8	171.0	187.3
	5	171.6	137.5	109.1	186.4	118.6	155.8	109.6	147.0	150.0
	6	167.6	152.2	88.1	149.5	65.1	108.2	54.9	129.3	126.6
	7	146.5	156.7	114.0	125.6	73.3	89.5	32.0	148.8	116.0
	8	120.9	150.5	105.7	104.5	84.1	60.9	30.4	90.5	95.5
	9	105.5	124.5	65.7	90.8	43.8	42.1	27.7	59.4	76.2
	10	106.2	114.6	51.4	68.9	71.7	42.3	26.2	62.7	74.2
	11	113.9	101.3	52.2	83.9	88.8	72.9	21.3	56.7	80.6
	12	118.6	146.8	54.0	88.2	110.9	54.1	19.0	47.7	83.6
	13	110.3	146.4	41.8	86.0	58.9	32.1	31.0	46.8	75.9
	14	92.3	76.3	27.0	64.5	52.3	21.6	22.6	42.6	58.8
	15	74.2	75.6	44.4	59.1	86.1	27.8	16.1	40.4	54.4
	16	97.1	76.3	67.5	55.8	106.2	23.9	22.7	38.2	65.7

Figure 11: Weekly Incidence rates of confirmed COVID-19 cases per 100,000 population, by HSE area, notified in Ireland between week 48, 2020 and week 16, 2021

		CHO1	CHO2	CHO3	CHO4	CHO5	CHO6	CHO7	CHO8	CHO9
2020	48	57.8	25.4	40.5	23.7	41.3	55.3	31.8	34.7	43.9
	49	72.6	33.8	50.6	13.2	43.7	66.3	34.1	38.1	56.2
	50	69.8	38.2	36.4	11.9	55.6	47.5	31.5	52.3	45.2
	51	108.1	30.9	59.7	51.8	89.2	73.9	51.4	79.3	100.3
	52	186.1	88.7	169.6	128.9	136.4	178.8	129.9	99.3	162.2
	53	565.3	343.0	482.6	286.0	246.1	259.7	189.3	421.0	309.6
2021	Notification Week 1	938.5	510.9	1016.9	991.9	1051.3	1025.4	975.8	786.1	1254.6
	Notification Week 2	509.9	710.2	550.9	474.8	528.9	474.7	453.3	469.4	622.3
	Notification Week 3	338.4	265.5	255.6	248.1	330.6	322.1	314.7	304.4	410.2
	Notification Week 4	195.5	171.0	154.8	136.8	202.2	184.8	188.4	194.4	251.5
	Notification Week 5	155.1	147.0	109.1	109.6	155.8	142.0	150.5	154.9	214.0
	Notification Week 6	98.9	129.3	88.1	54.9	108.2	135.4	133.7	147.6	226.1
	Notification Week 7	95.8	148.8	114.0	32.0	89.5	112.0	123.8	137.3	193.8
	Notification Week 8	79.7	90.5	105.7	30.4	60.9	89.3	94.7	133.4	170.4
	Notification Week 9	46.5	59.4	65.7	27.7	42.1	90.8	67.8	115.1	157.4
	Notification Week 10	58.3	62.7	51.4	26.2	42.3	49.3	95.5	98.3	153.5
	Notification Week 11	75.1	56.7	52.2	21.3	72.9	68.1	88.7	99.6	170.7
	Notification Week 12	92.3	47.7	54.0	19.0	54.1	85.1	103.3	122.7	156.6
	Notification Week 13	66.4	46.8	41.8	31.0	32.1	58.2	98.9	115.6	155.3
	Notification Week 14	56.7	42.6	27.0	22.6	21.6	42.3	86.6	69.9	129.5
	Notification Week 15	75.1	40.4	44.4	16.1	27.8	40.2	67.1	68.0	103.2
	Notification Week 16	81.8	38.2	67.5	22.7	23.9	58.2	91.4	70.1	127.5

Figure 12: Weekly Incidence rates of confirmed COVID-19 cases per 100,000 population by CHO notified in Ireland between week 48, 2020 and week 16 2021

CCA	CCA1	CCA2	CCA3	CCA4	CCA5	CCA6	CCA7	CCA8
LHO	Dublin South	Dublin South East	Dublin South City	Dublin South West	Dublin West	Dublin North West	Dublin North Central	Dublin North
48	38.2	69.5	34.0	44.1	35.4	43.8	64.0	32.0
49	41.9	80.8	32.7	38.5	44.4	60.7	69.2	44.8
50	28.7	75.2	30.7	26.7	42.5	34.7	62.1	43.6
51	48.5	141.5	46.7	44.1	62.4	104.0	133.3	77.6
52	127.1	321.7	120.1	134.9	171.9	172.4	241.3	106.9
53	194.7	458.4	217.4	206.3	198.9	327.1	415.3	232.7
1	798.1	1741.3	955.7	1148.6	1165.2	1441.7	1447.1	990.2
2	318.2	769.6	388.8	518.3	574.2	730.7	702.5	487.7
3	234.4	493.9	290.1	284.0	411.3	502.9	502.0	281.3
4	149.2	265.1	132.1	202.0	306.4	305.9	296.3	181.4
5	82.3	225.5	110.7	149.8	204.1	261.6	267.2	144.3
6	84.5	251.4	88.7	135.5	200.8	256.7	361.0	121.2
7	64.7	220.7	73.4	110.0	169.3	190.3	329.9	115.4
8	56.6	160.9	56.7	91.4	130.0	155.1	317.6	94.9
9	63.2	156.0	38.0	59.0	104.9	161.4	269.1	87.6
10	55.1	47.7	47.4	73.3	105.6	146.4	274.9	86.8
11	56.6	91.3	53.4	79.6	115.2	172.4	263.3	114.2
12	52.9	131.0	60.0	104.4	137.8	177.7	177.3	127.3
13	36.7	80.8	65.4	124.9	106.9	181.6	151.4	136.6
14	33.1	45.3	59.4	84.5	94.0	156.5	118.4	114.6
15	38.9	45.3	32.7	58.4	82.4	146.9	82.2	80.6
16	50.0	73.6	53.4	109.4	86.3	184.5	133.9	77.9

Figure 13: Weekly Incidence rates of confirmed COVID-19 cases per 100,000 population cases by Dublin Local Health Offices (LHOs) notified in Ireland between week 48, 2020 and week 16, 2021

Note: Local health offices (LHOs) came into operation on 1st September 2005, replacing Community Care Areas (CCAs). LHO population denominators are used in this report rather than CCA population denominators. The LHO rates were calculated using Census 2016 LHO denominator data extracted from the HSE Health Atlas and are not a direct match to the corresponding CCAs.

Laboratory data for COVID-19 cases

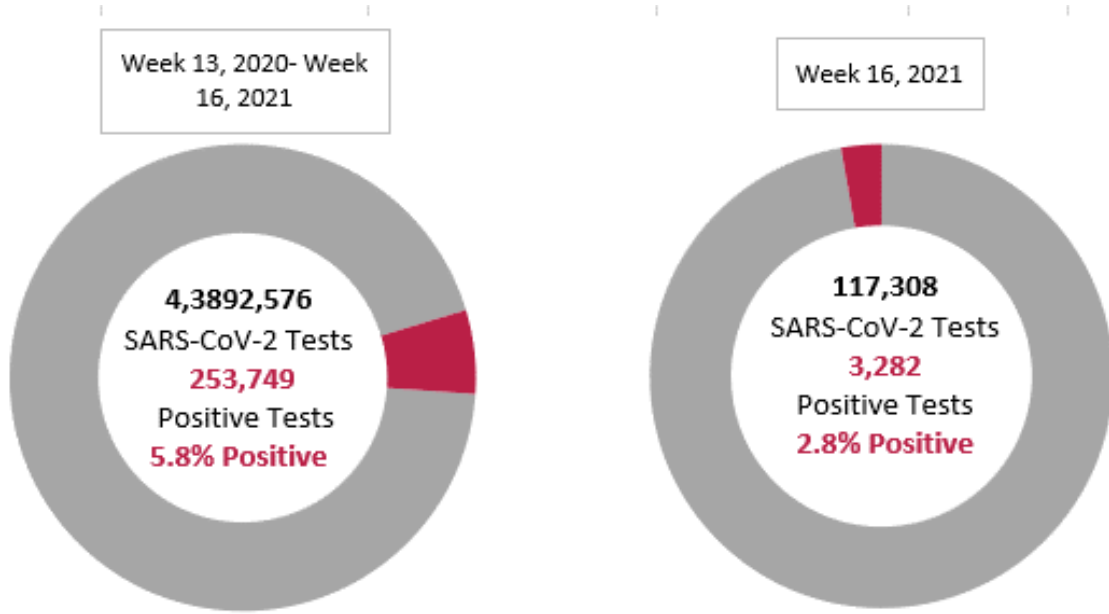


Figure 14a: Number of SARS-CoV-2 tests and positive tests* in Ireland between week 13, 2020 and week 16, 2021

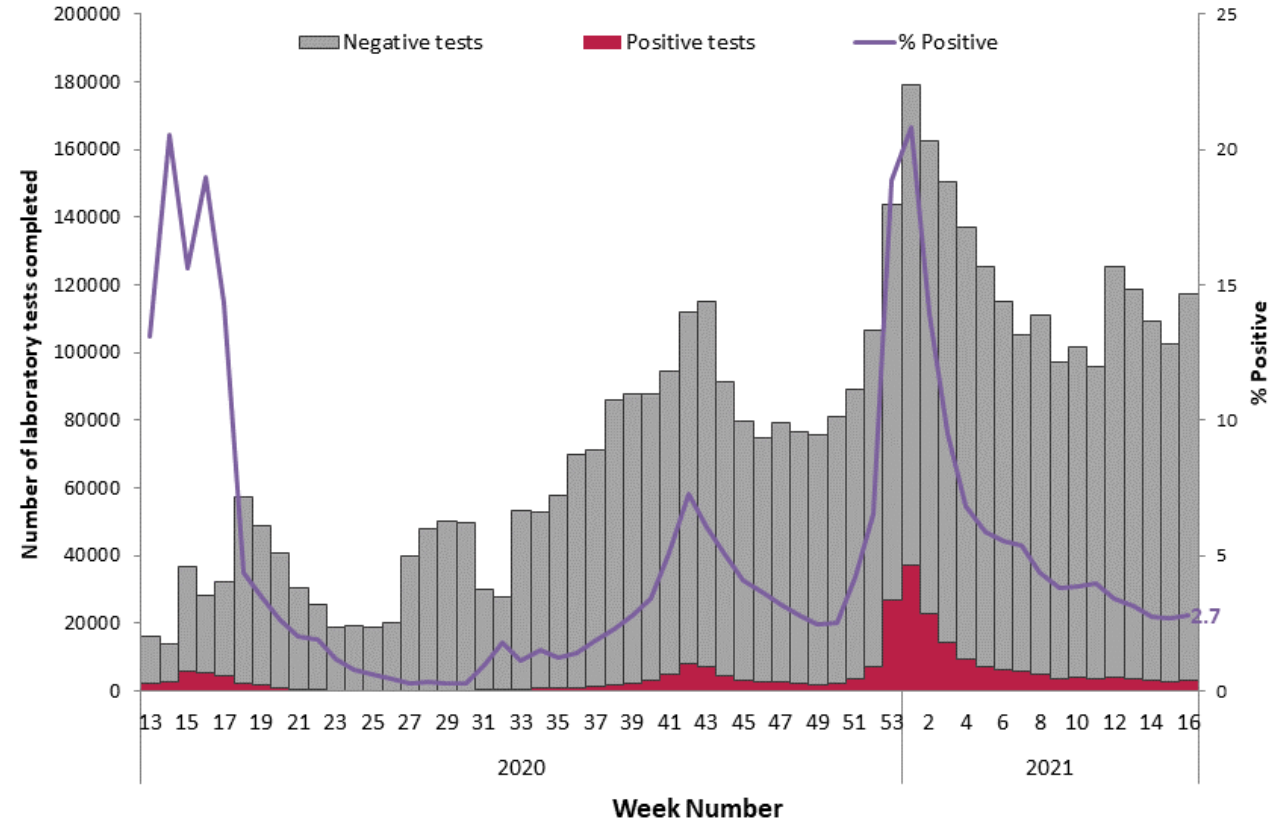
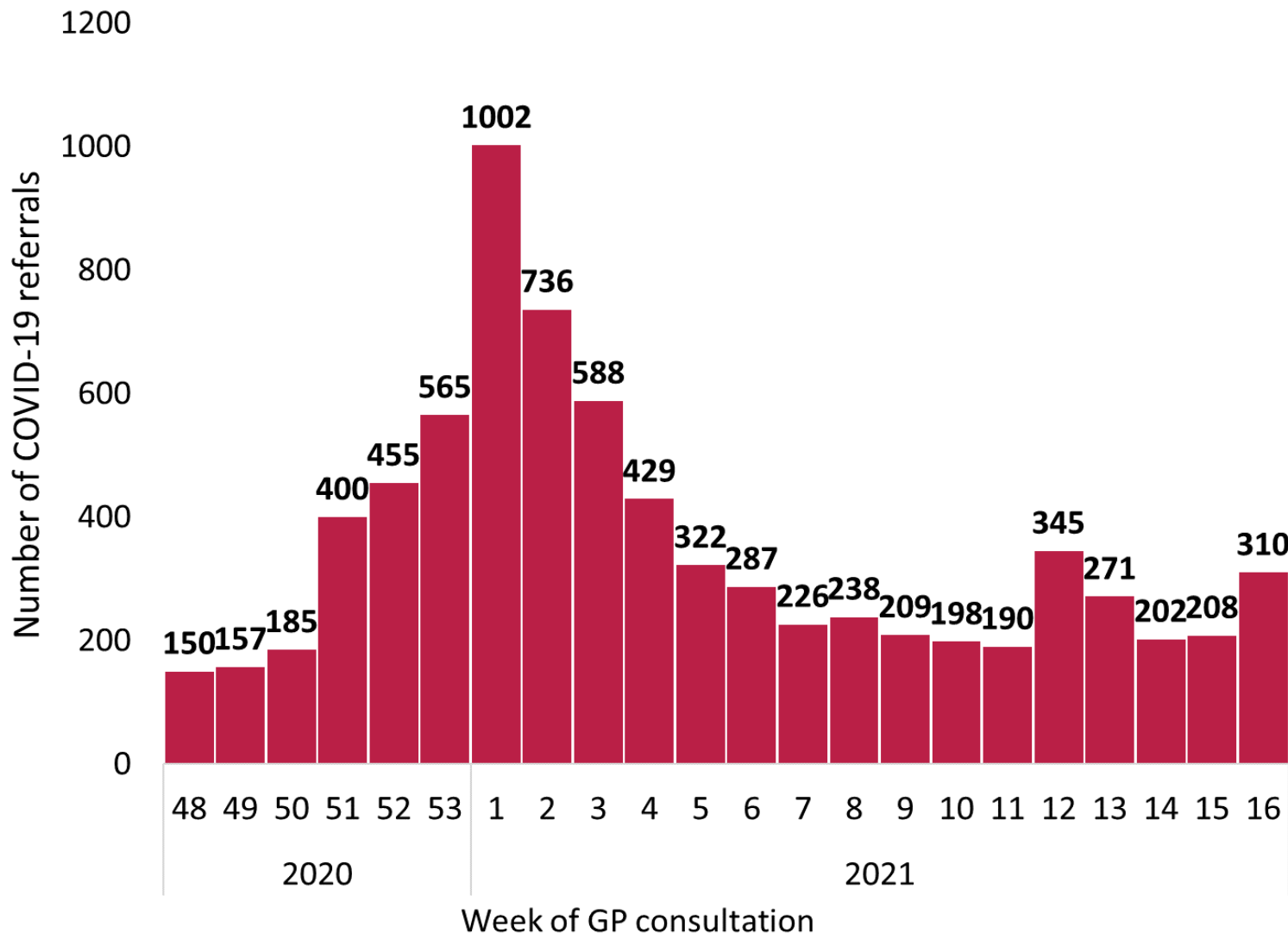


Figure 14b: Number of SARS-CoV-2 negative and positive tests* completed in Ireland between week 13, 2020 and week 16, 2021

*Positive tests refers to all positive specimens and includes duplicates and individuals who were retested

Number of sentinel GP COVID-19 referrals by week of consultation



- The Irish Sentinel GP Surveillance Scheme is a collaboration between the Health Protection Surveillance Centre, the National Virus Reference Laboratory and the Irish College of General Practitioners.
- The sentinel GP network comprises 60 general practices and 166 practitioners, covering 6.6% of the national population (CSO Census 2016).

Figure 13a: Number of sentinel GP COVID-19 referrals by week of consultation, weeks 48 2020-16 2021, Ireland. The epidemiological week is Monday-Sunday (ISO week) in line with influenza/COVID-19 international reporting to European Centre for Disease Prevention and Control (ECDC).

% SARS-CoV-2 positivity data from sentinel GP COVID-19 referrals tested by NVRL

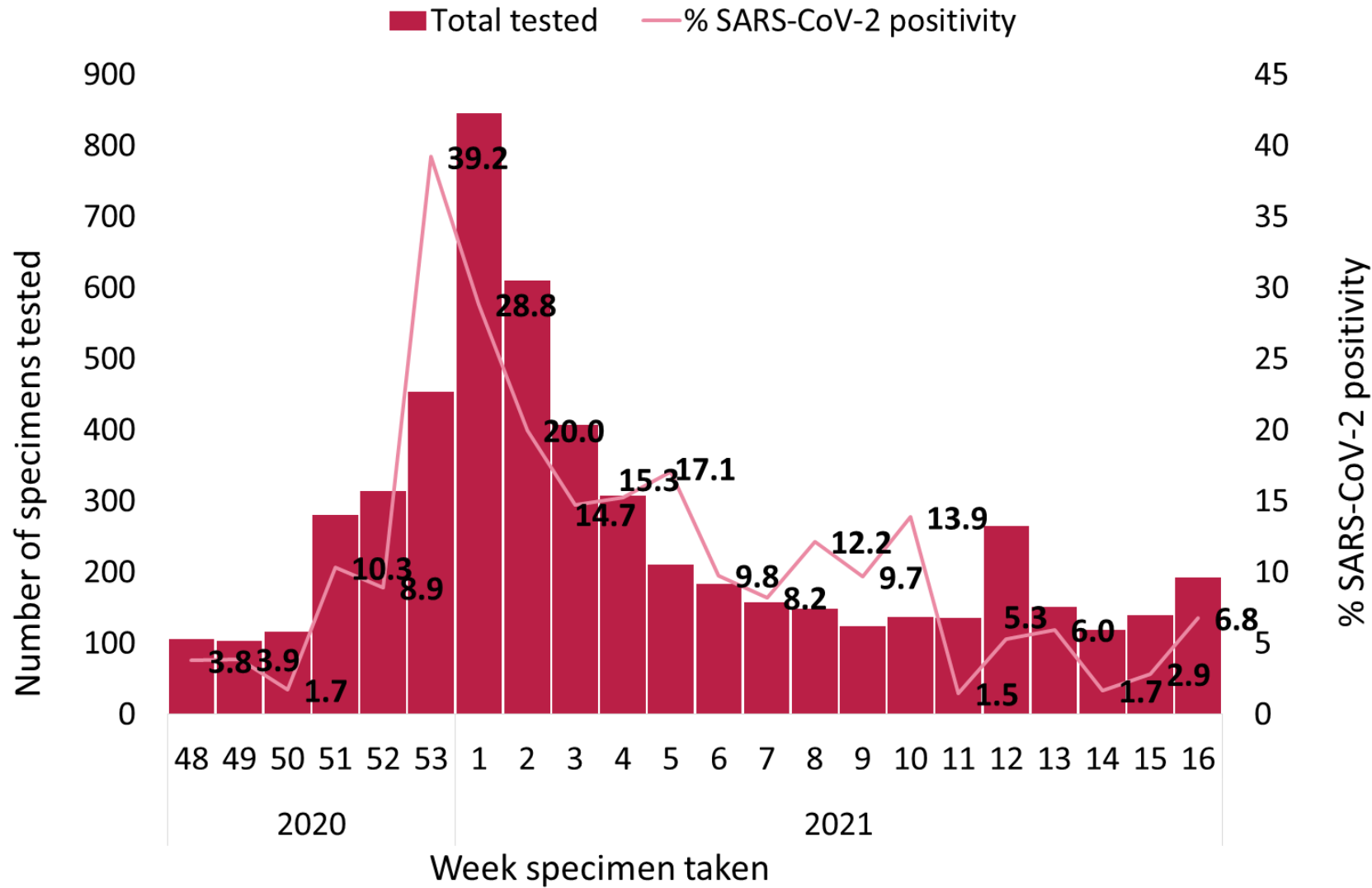


Figure 13b: % SARS-CoV-2 positivity data from sentinel GP COVID-19 referrals tested by the NVRL by week specimen was taken, weeks 48 2020 to 16 2021. The Epidemiological week is Monday to Sunday (ISO week) in line with influenza/COVID-19 international reporting to ECDC.

Hospitalisations and ICU admissions among COVID-19 cases

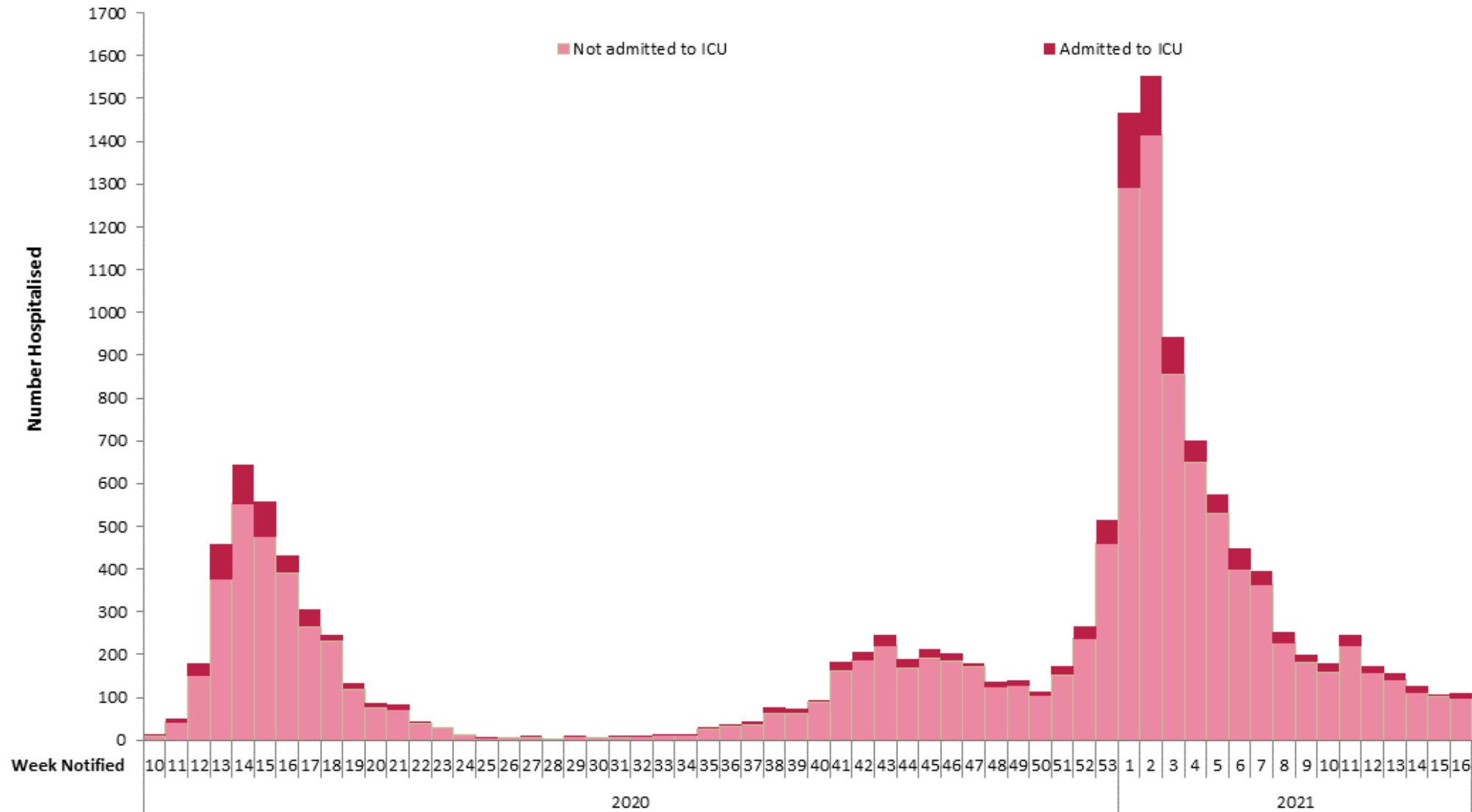


Figure 16: Number of hospitalised COVID-19 cases based on ICU admission status in Ireland between week 10, 2020 and week 16, 2021*

*Please note that the most recent weeks may not yet reflect all admissions.

Deaths among COVID-19 cases

	Number	Percent
Total number of deaths	4,874	
confirmed	4,608	94.5
probable	94	1.9
possible	172	3.5
Number hospitalised who died	2,598	53.3
admitted to ICU who died	460	9.4
not admitted to ICU who died	2,138	43.9
Number of imported cases who died	5	0.1
Number of HCWs who died	18	0.4
Number with underlying conditions who died	4,259	87.4
Males who died	2,562	52.6
M:F ratio	1.11	
Median age (years)	83	
Mean age (years)	81	
Age range (years)	0 - 105	

Table 3: Summary of deaths in all COVID-19 cases notified in Ireland between week 10, 2020 and week 16, 2021

Age group (years)	Female	Male	Total	Percent
<45 yrs	25	29	54	1.1
45-54 yrs	30	55	85	1.7
55-64 yrs	95	165	260	5.3
65-74 yrs	270	484	754	15.5
75-84 yrs	707	944	1,651	33.9
85+ yrs	1,183	885	2,068	42.4
Unknown	2		2	0.0
Total	2,312	2,562	4,874	
Percent	47.4	52.6		

Table 4: Number of deaths in all COVID-19 cases by sex and age group notified in Ireland between week 10, 2020 and week 16, 2021

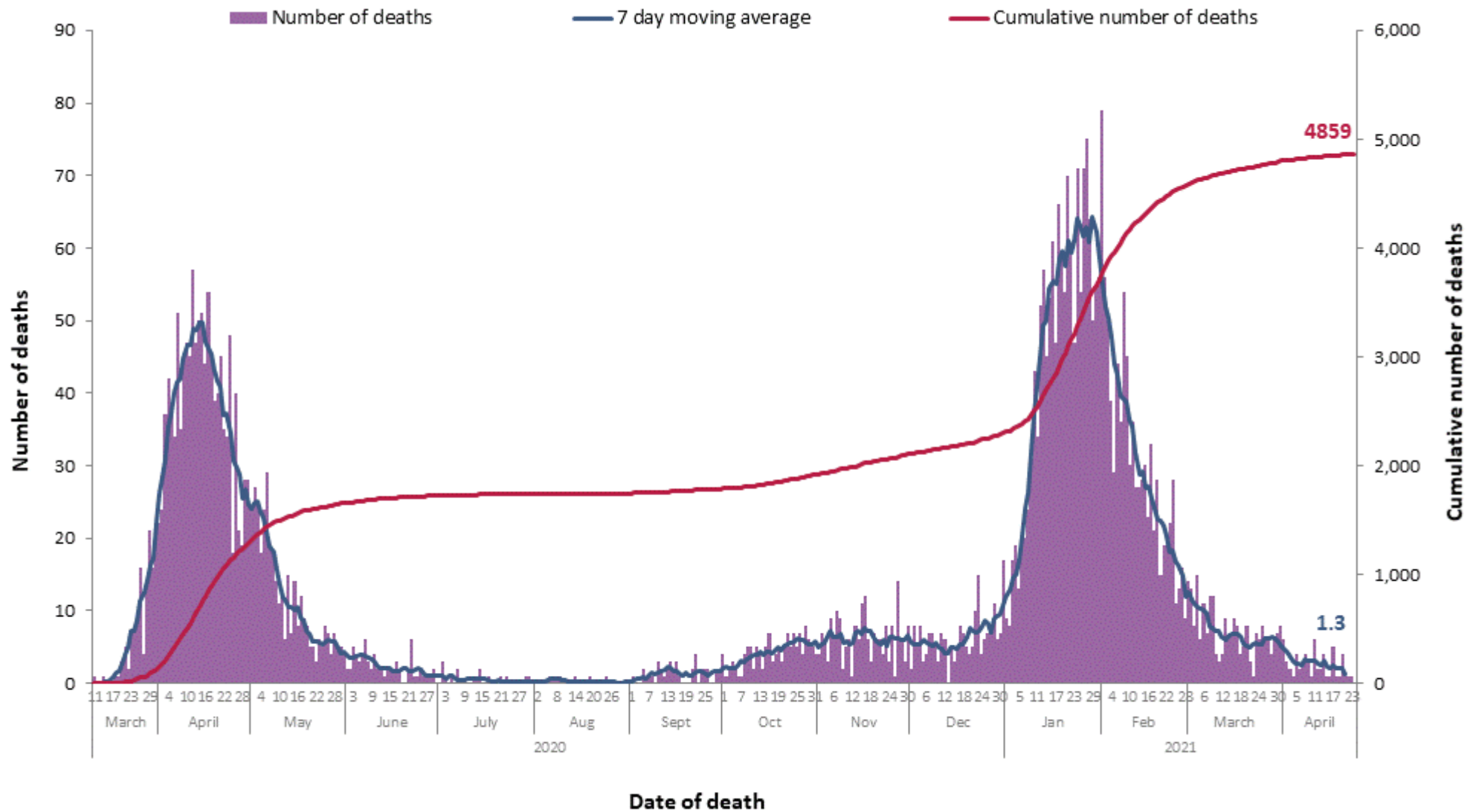


Figure 17a: Daily and 7-day moving average number of deaths among COVID-19 cases notified in Ireland by date of death and cumulative total between week 10, 2020 and week 16, 2021

* Date of death is not yet available for 15 cases

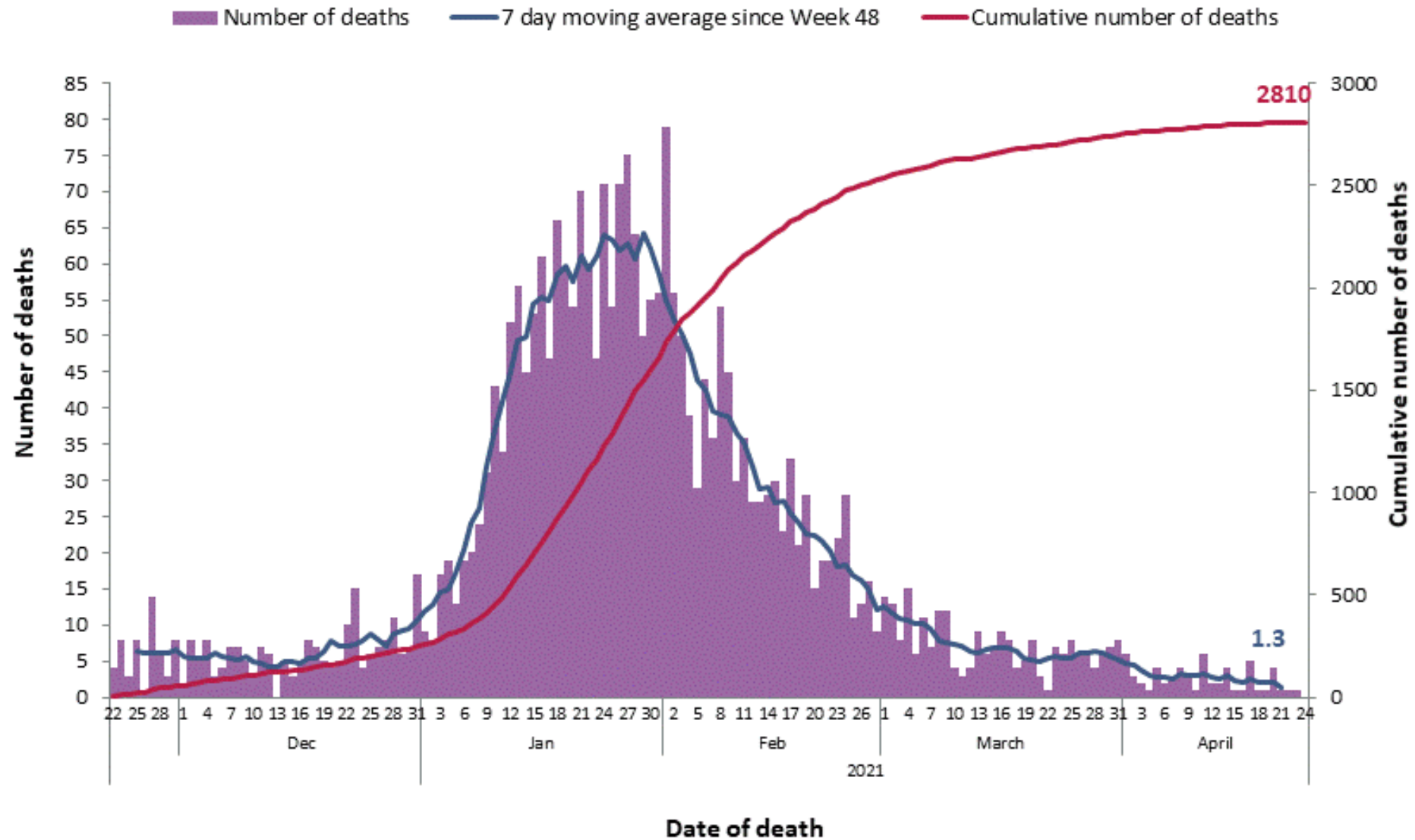


Figure 17b: Daily and 7-day moving average number of deaths among COVID-19 cases notified in Ireland by date of death and cumulative total, between week 48, 2020 and week 16, 2021

Please note: a lag in time between reporting of deaths and data extraction is expected and as such most recent dates will not yet reflect all deaths on that date

Please refer to the Health Protection Surveillance (HPSC) website for specific reports on

- [14 Day report](#) epidemiology of COVID-19 in Ireland
- [Outbreaks/clusters](#) in Ireland COVID-19 weekly report
- [Underlying Conditions](#) in confirmed cases of COVID-19 in Ireland weekly report
- [Healthcare Workers](#) in Ireland COVID-19 weekly report

Acknowledgements

Sincere thanks are extended to all those who are participating in the collection of data and reporting of data used in these reports. This includes the HSE COVID-19 Contact Management Programme (CMP), staff in ICU units, notifying clinicians, laboratory staff, public health doctors, nurses, surveillance scientists, microbiologists and administrative staff.

Report prepared by COVID-19 Epidemiology Team, HPSC

Technical Notes

1. Data Source

- Data are based on statutory notifications and were extracted from Computerised Infectious Disease Reporting (CIDR) system. Data are provisional and subject to ongoing review, validation and update. As a result, figures in this report may differ from previously published figures.
- Slide 24 data provided by Deloitte Ireland LLP
- Slides 25 and 26 include data reported from the Irish sentinel GP network.

2. Epidemiological date

- Epidemiological date is based on the earliest of dates available on the case and taken from date of onset of symptoms, date of diagnosis, laboratory specimen collection date, laboratory received date, laboratory reported date or event creation date/notification date on CIDR. By using this date rather than event creation/ notification date, adjusts for any delays in testing/notification. Further information on epidemiological dates and weeks can be found on the [HPSC website](#).

3. Population data

- Population data were taken from Census 2016. Data were aggregated into the following age groups for the analysis: 0-4 years, 5-12 years, 13-18 years, 19-24 years, 25-34 years, 35-44 years, 45-54 years, 55-64 years, 65-74 years, 75-84 years and ≥ 85 years.